



# Keeping homes and businesses powered up with a APC UPS

It's easy to take energy for granted. It helps keep us warm, safe, productive, clean, fulfilled, and healthy. However, the latest indicators show that Europe is bracing for uncertain times as the region struggles to ensure sufficient energy levels to get through the next few years. The European media has been covering this worrying scenario on an almost daily basis, with sources like Bloomberg Europe\* predicting that power outages are 'the next threat for the continent'.

As a leading APC UPS manufacturer, Schneider Electric is helping to protect critical IT applications within homes and businesses across Europe. So, even if we experience power fluctuations or blackouts over these coming months, rest assured we can keep you powered up and productive through this uncertain period.

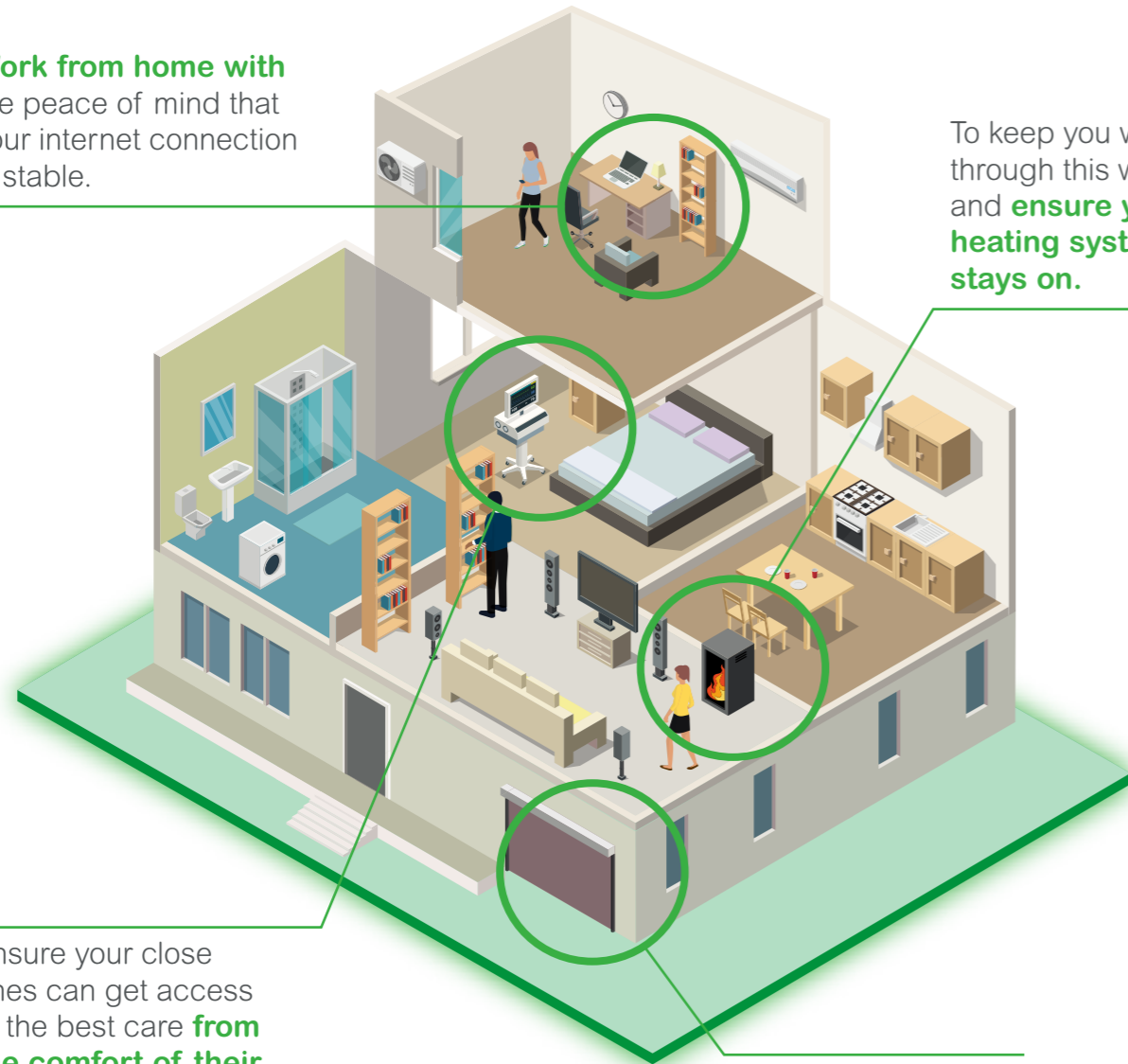
\*Bloomberg Article « [Europe Prepares Blackout Plans to Head Off Winter Energy Chaos](#) », September 15, 2022

Life Is On

**Schneider**  
Electric

# Uninterrupted power in the home

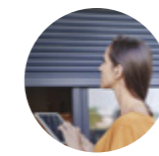
Work from home with the peace of mind that your internet connection is stable.



To keep you warm through this winter and **ensure your heating system stays on.**

Ensure your close ones can get access to the best care **from the comfort of their home.**

**And ensure you have 24/7 access in and around your house:** including for your garage door and electric blinds.



## Reliable access management



	Estimated power (watts)	Autonomy*	Reference**
Automatic blinds (less than 5 windows)	150 W	Circa 10x open and close	BX1600MI-FR
Automatic blinds (more than 5 windows)	150 W and more	Circa 10x open and close	BX2200MI-FR
Lighting	10W	1h	BX750MI-FR
Electric gate	150W	Circa 5x open and close	BX1600MI-FR
Garage door	500W	Circa 5x open and close	BX1600MI-FR
Central alarm	10W	2h	BX750MI-FR



## Ensure home-office connectivity



	Estimated power (watts)	Autonomy*	Reference**
ADSL-router	20W	2h30	BX750MI-FR
Fiber-router	32W	1h30	BX950MI-FR
Laptop	40W	1h	BX950MI-FR
Printer	50W	1h	BX1200MI-FR



## Protect your heating equipment



	Estimated power (watts)	Autonomy*	Reference**
Pellets or fuel Boiler	100W	1h30	BX2200MI-FR
Pellets burning stove	30W	2h30	
Gasboiler < 32 kW	75W	2h	



## Protect your medical devices\*\*\*



	Estimated power (watts)	Autonomy*	Reference**
Medical Bed	90W	60 movements	BX1600MI-FR
CPAP Machine	45W	2h	BX1600MI-FR
Artificial respirator	460 W	2h	SRVS1KRILRK + 2 x SRVS36RLBP-9A + SURT013

\*The autonomy values given are an indication. This depends on the power of the equipment to be protected and how it is used. The power of the device to be protected should be checked by a qualified electrician if necessary. Schneider Electric cannot be held liable in the event of a malfunction or lack of autonomy.

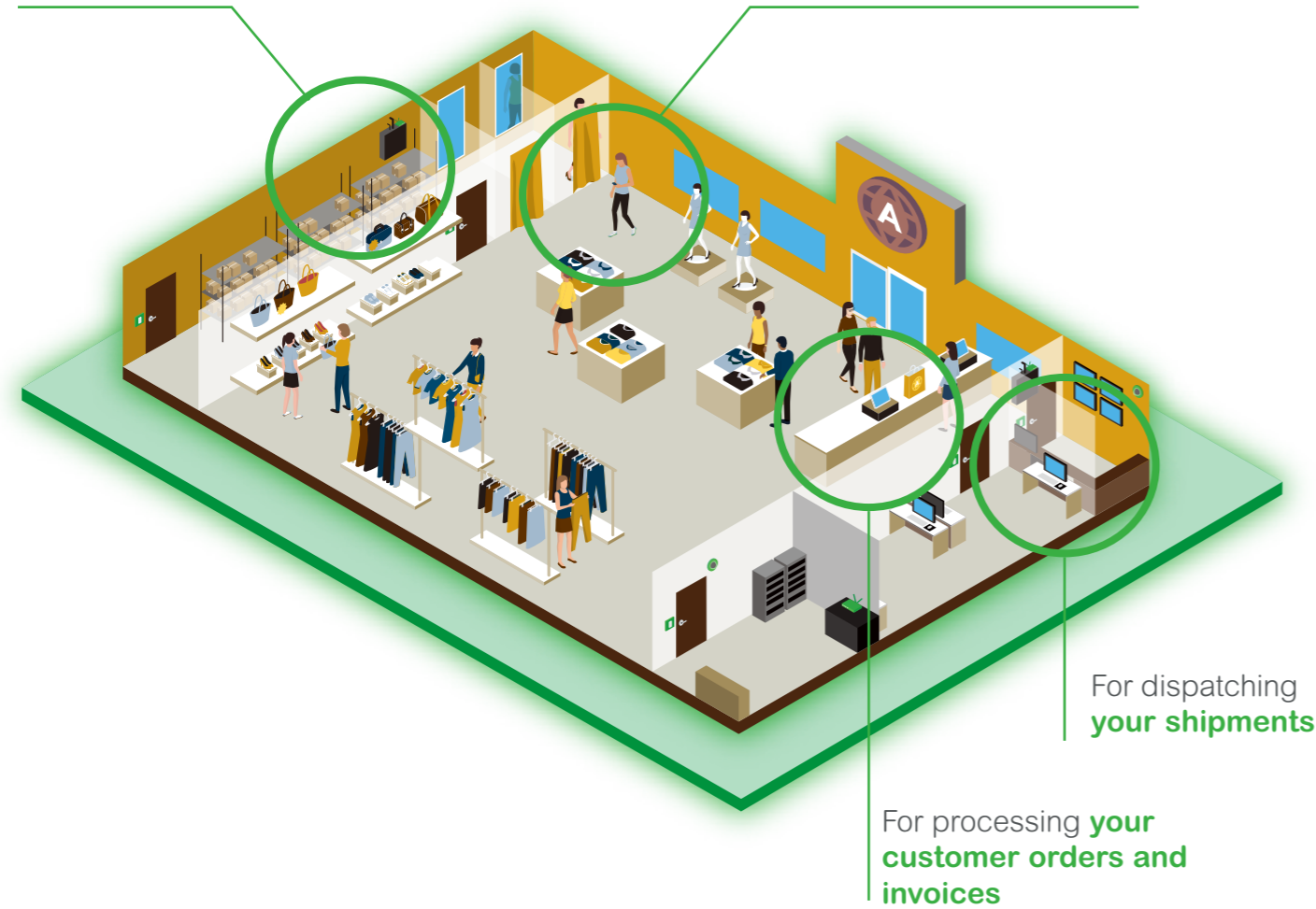
\*\*Also available with French outlets (FR)

\*\*\*To comply with the EMC standard: IEC/EN 60601-1-2, the UPS should be installed more than 2 meters from the patient.

# Uninterrupted power for the workplace

To manage and access **your stock**

To avoid disruption to **your business calls**



Process customer orders and invoices



	Estimated power (watts)	Autonomy*	Reference
Cashier and Payment Terminal	60 W	2h	BX950MI-FR
VOIP Phone	15 W	2h	BX750MI-FR
Wifi repeater	17 W	1h30	BX750MI-FR
Router	15 W	2h	BX750MI-FR
PC + Screen	60 W	2h30	BX950MI-FR



Protect your assets



	Estimated power (watts)	Autonomy*	Reference
Security and CCTV	330W	1h30	SRVS1KIL + 1 x SRVS36BP-9A
Sliding doors	150W	Estimation Circa 300 open & close (1kVA) Circa 600 open & close (2kVA)	SRVS1KI / SRVS2KI
Refrigerated cabinet	100 W	2h	SRVS1KIL
	150 W		SRVS1KIL
	300 W		SRVS1KIL + 1 x SRVS36BP-9A

\*The autonomy values given are an indication. This depends on the power of the equipment to be protected and how it is used. The power of the device to be protected should be checked by a qualified electrician if necessary. Schneider Electric cannot be held liable in the event of a malfunction or lack of autonomy.



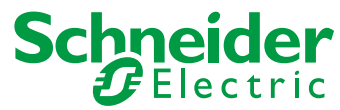
# NOTES

A series of horizontal dashed lines for writing notes.

# NOTES

A series of horizontal dashed lines for writing notes.

Life Is On



**Schneider Electric nv/sa**

Dieweg 3 B-1180  
Bruxelles  
Tel : (02) 373 75 01

© 2023 Schneider Electric. All rights reserved. Life Is On Schneider Electric is a commercial trademark owned by Schneider Electric SE, its subsidiaries and its affiliated companies. Owing to changes in the standards and equipment, the characteristics given in the text and images of this document are only binding after confirmation by us.

Life is On - Design: Stéphane Desprez - Photos: Shutterstock / Rawpixel.com

03/2023