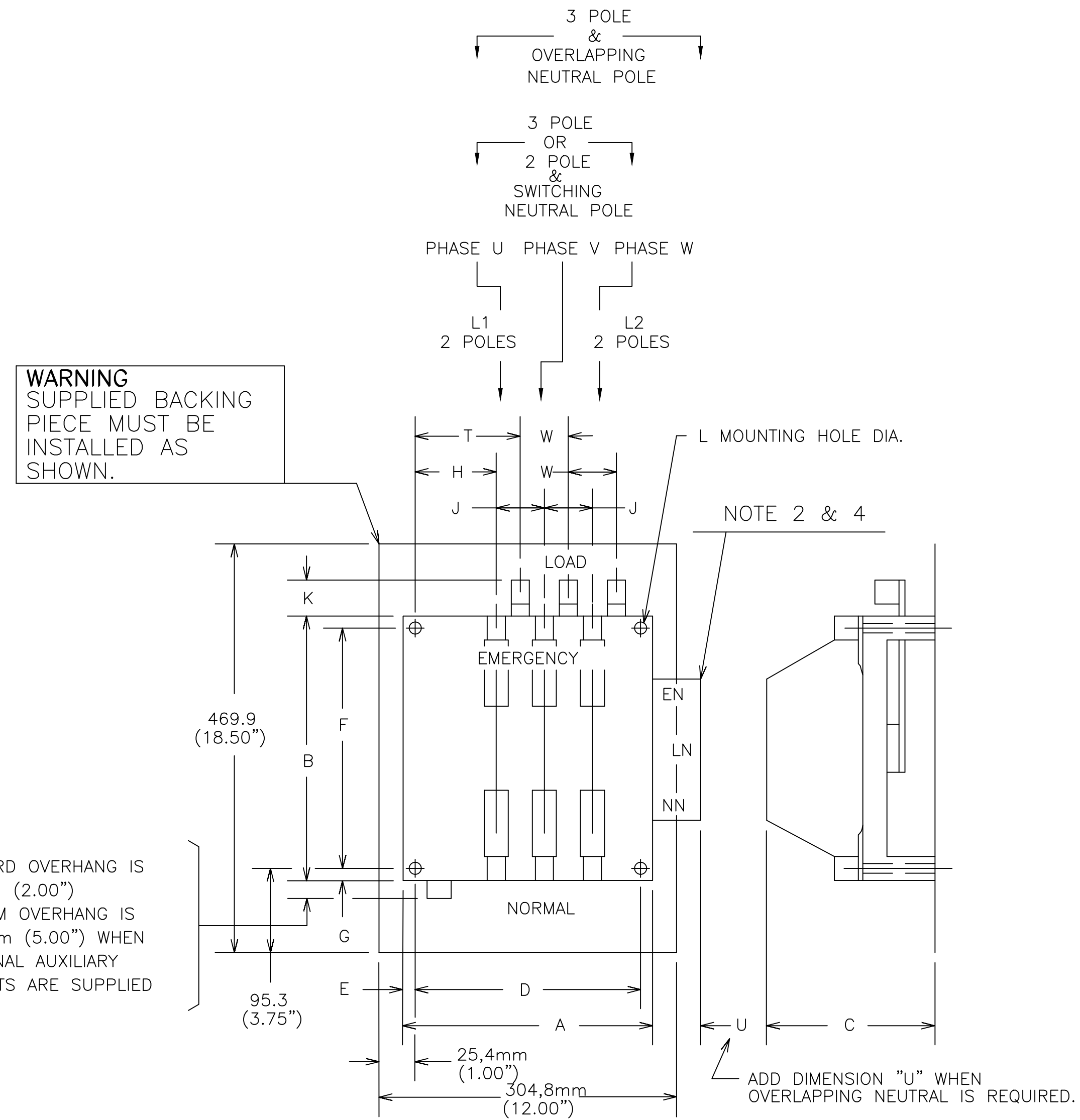


OUTLINE FOR ASCO® 200 SERIES TRANSFER SWITCHING DEVICE (E2ATS/E2NTS) 260 & 400 AMPERES, OPEN TYPE

GENERAL NOTES

1. THE STANDARD TRANSFER SWITCHING DEVICE CONFIGURATION IS FOR TOP (LOAD & EMERGENCY) AND BOTTOM (NORMAL).
2. NEUTRAL CONFIGURATIONS:
AN OPTIONAL FULL RATED NEUTRAL CONFIGURATION FOR EACH SOURCE AND THE LOAD MAY BE PROVIDED. WHEN EQUIPPED IT IS IN ONE OF THE FOLLOWING FORMATS AS SPECIFIED BY THE CATALOG NUMBER NO. NEUTRAL TYPE:
(A) SOLID (COPPER BUS) NEUTRAL
(B) SWITCHED NEUTRAL POLE (AVAILABLE ONLY ON 2 POLE UNITS).
(C) OVERLAPPING NEUTRAL POLE
3. THE STANDARD MECHANICAL (SCREW TYPE) AL/CU TERMINAL LUGS ARE SHOWN FOR REFERENCE.
4. SWITCH OVERLAPPING NEUTRAL POLE IS SHOWN FOR REFERENCE
5. WHEN INSTALLING CONDUCTORS, CONNECT TO SIMILARLY MARKED PHASES OF NORMAL, EMERGENCY & LOAD.
6. ALL INTERNAL CONNECTIONS ARE MADE AT FACTORY.
7. MAINTAIN ELECTRICAL CLEARANCE OF 25,4mm (1.00") BETWEEN LIVE METAL PARTS AND GROUNDED METAL.
8. WHEN MOUNTING THE TRANSFER SWITCHING DEVICE IN THE ENCLOSURE, THE CONTROL PANEL(S) AND OPERATOR CONTROLS SHOULD BE MOUNTED ON THE INSIDE, REAR SURFACE OF THE DOOR. 152,4mm (6.00"). MIN. DEPTH TO TRANSFER SWITCHING DEVICE FOR CONTROLS IS REQUIRED.
9. THE CONTROL PANEL(S) IS CONNECTED TO THE TRANSFER SWITCHING DEVICE BY A HARNESS WITH A QUICK DISCONNECT PLUG(S). THE HARNESS EXITS THE TRANSFER SWITCHING DEVICE ON THE RIGHT SIDE. CONSULT FACTORY FOR EXTENSION HARNESSES.
10. FOR TYPE 1 ENCLOSURE SEE DETAIL A -1 AND DETAIL B -1 FOR CUTOUT DATA. FOR TYPE 3R, 4, & 12 ENCLOSURE SEE DETAIL A -2 & DETAIL B -2 FOR CUTOUT DATA. GASKETS AND BEZELS ARE PROVIDED FOR TYPE 3R, 4, & 12 ENCLOSURE.
11. AN OPERATOR'S MANUAL IS FURNISHED WITH EACH AUTOMATIC TRANSFER SWITCHING DEVICE. REFER TO THIS PUBLICATION PRIOR TO INSTALLATION AND OPERATION OF THE SWITCH.



2 AND 3 POLE WITH AND WITHOUT OVERLAPPING NEUTRAL mm(IN)

DIMENSIONS													
A	B	C	D	E	F	G	H	J	K	L	T	U	W
279,4 (11.00)	304,8 (12.00)	174,5 (6.87)	254,0 (10.00)	12,7 (0.50)	279,4 (11.00)	12,7 (0.50)	98,3 (3.87)	53,8 (2.12)	53,8 (2.12)	7,9 (0.31)	125,2 (4.93)	76,2 (3.00)	53,8 (2.12)

UNIT WEIGHT, Kg (LBS)
(WEIGHT INCLUDES STANDARD TRANSFER SWITCHING DEVICE & CONTROLS)

AMP SIZE	POLES	WEIGHT Kg (LBS)
260 & 400	2	17 (37)
	B2	21 (45)
	C2	21 (45)
	C3	24 (53)

MINIMUM REQUIRED ENCLOSURE SIZE mm(IN)

SWITCH RATING (AMPS)	HEIGHT	WIDTH	DEPTH
260-400 AMPS	1219,2 (48.00)	457,2 (18.00)	330,2 (13.00)

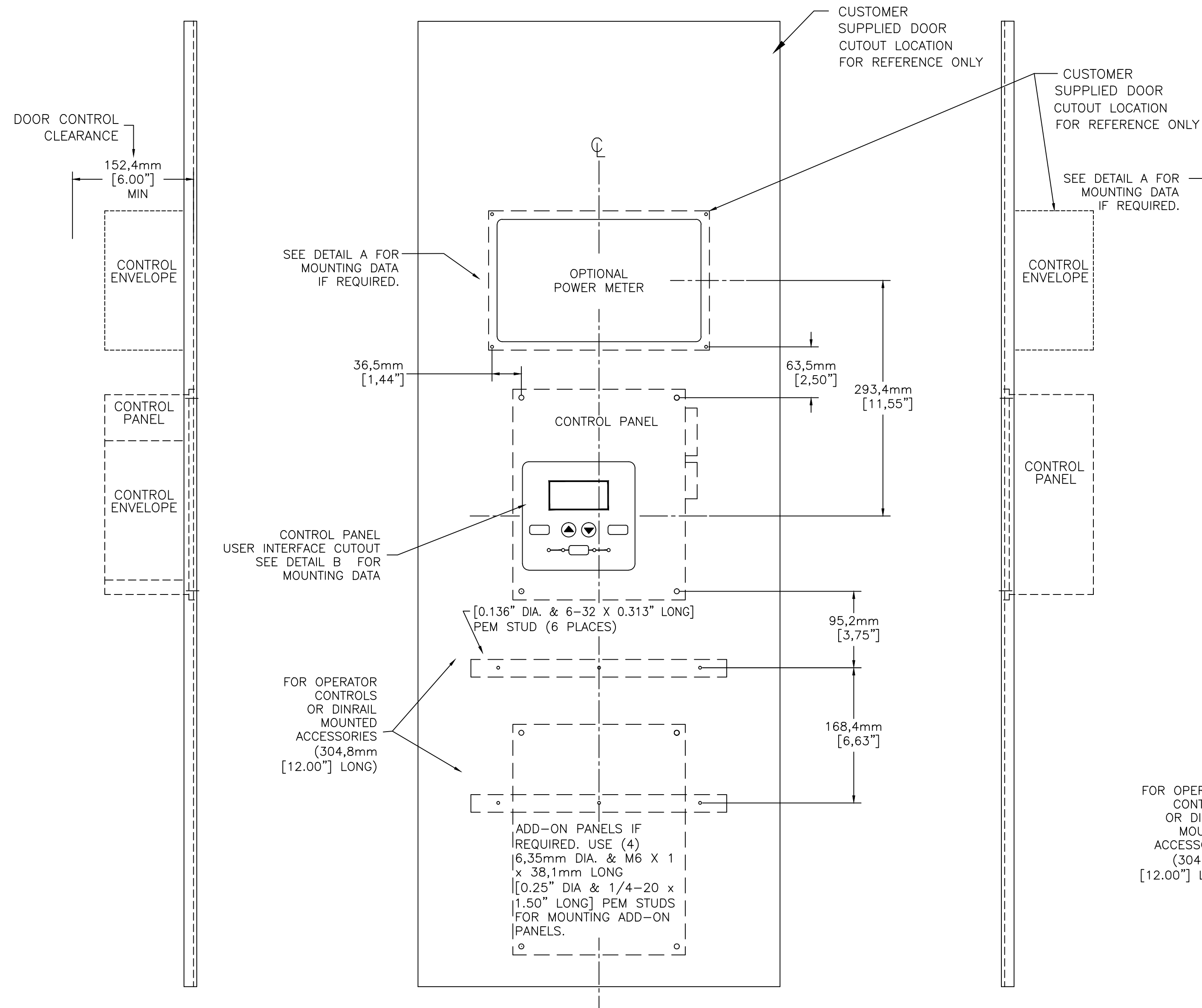
SUGGESTED BOLT SIZE FOR MOUNTING A.T.S.E.:
1/4-20 X 76,2mm (3) INCH LONG MINIMUM QUANTITY (4)

POWER CONNECTIONS		
RANGE OF Al-Cu CONDUCTOR SIZES ISO CROSS SECTION (mm ²) (USE STRANDED TYPE CONDUCTORS)		
SWITCH RATING (AMPS)	CONDUCTOR SIZE RANGE	RECOMMENDED TIGHTENING TORQUE
260 & 400	ONE 25-300 OR TWO 50-120	67,8 Nm

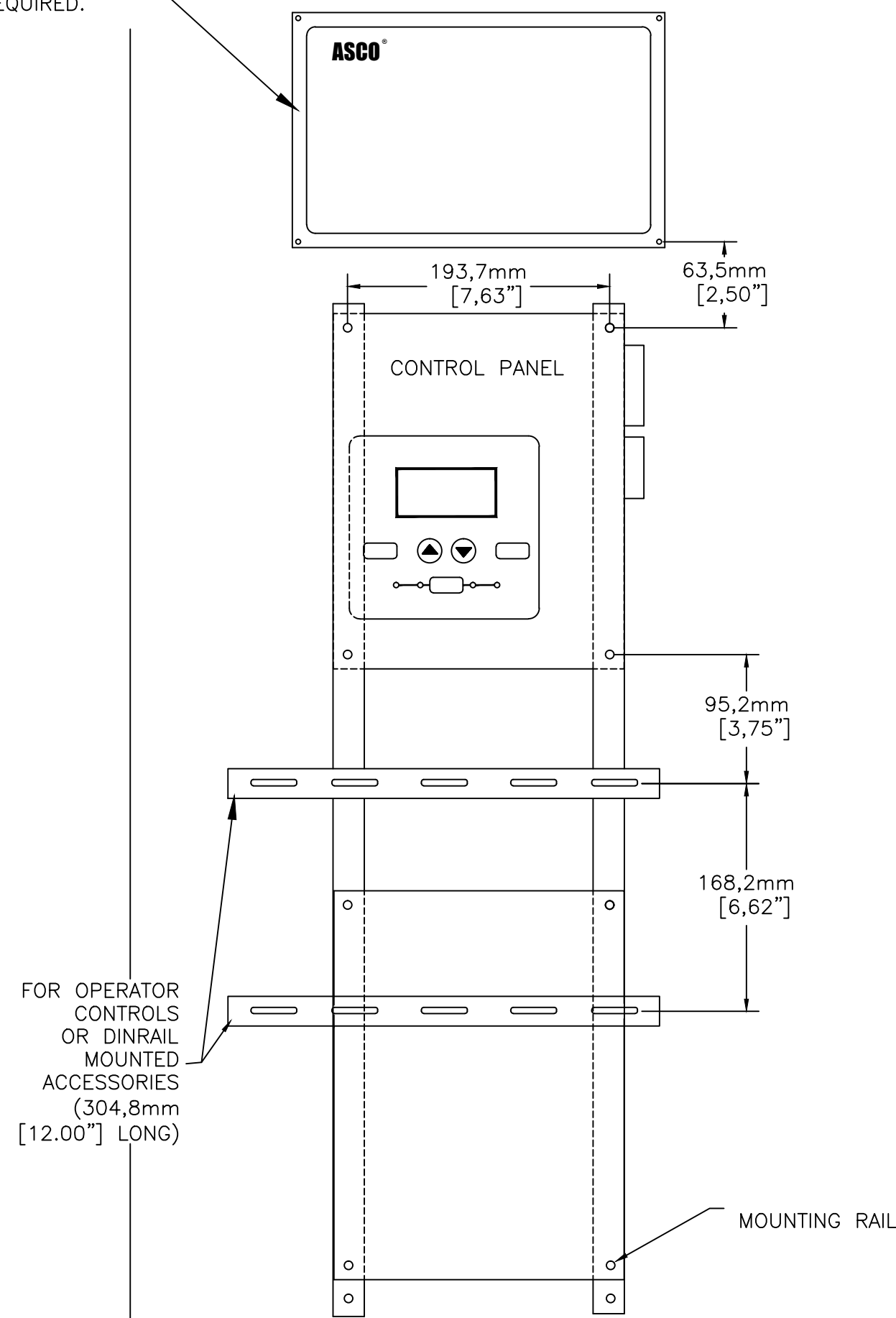
TRANSFER SWITCHING EQUIPMENT (IEC/CE) RATED UP TO 480 VAC MAX.		A
PROJECT NAME:		259901 TR BK 3/11/16 SEE ECN
COMPOSITE OUTLINE		254916 TR BK 5/21/15 ISSUE
200 SERIES, E2ATS/E2NTS RATED 260 & 400 AMPERES OPEN TYPE, IEC/CE		REV. TO SHEET ECN NO. BY APP. DATE
DRAWN BY: TR DATE: 5/21/15		COMPUTER GENERATED DRAWING
CHECKED BY: BK DATE: 5/21/15		SCALE: NONE SIZE: DS
PROJECT APPROVAL BY: BK DATE: 5/21/15		DWG. NO. 978732-002-A
FINAL APPROVAL		DRAWING A ECN NO. 259901 SHEET 1 OF 2
ASCO POWER TECHNOLOGIES, L.P. FLORHAM PARK, NEW JERSEY 07932 U.S.A.		

OUTLINE FOR ASCO® 200 SERIES TRANSFER SWITCHING DEVICE (E2ATS,E2NTS) 260 & 400 AMPERES OPEN TYPE

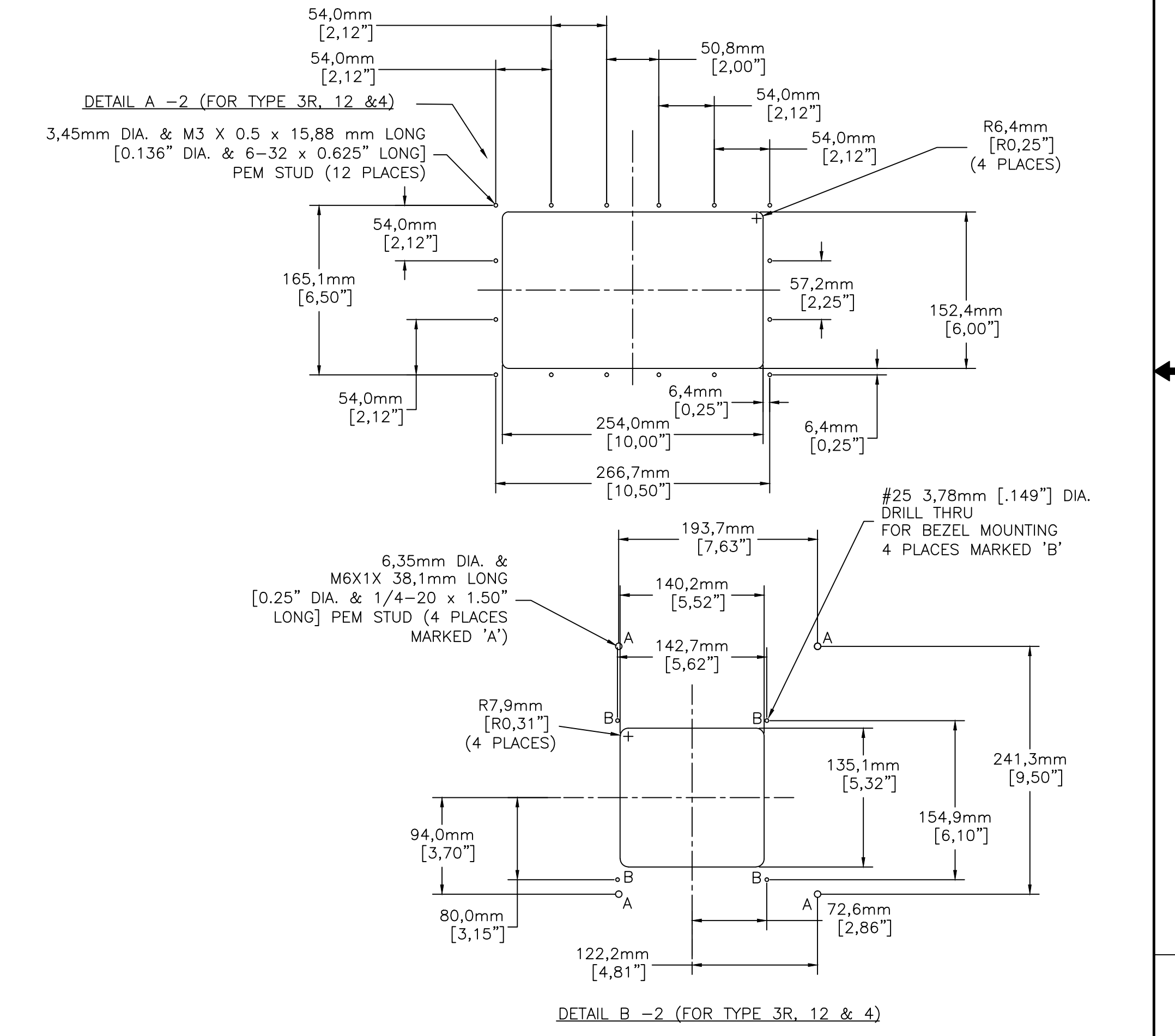
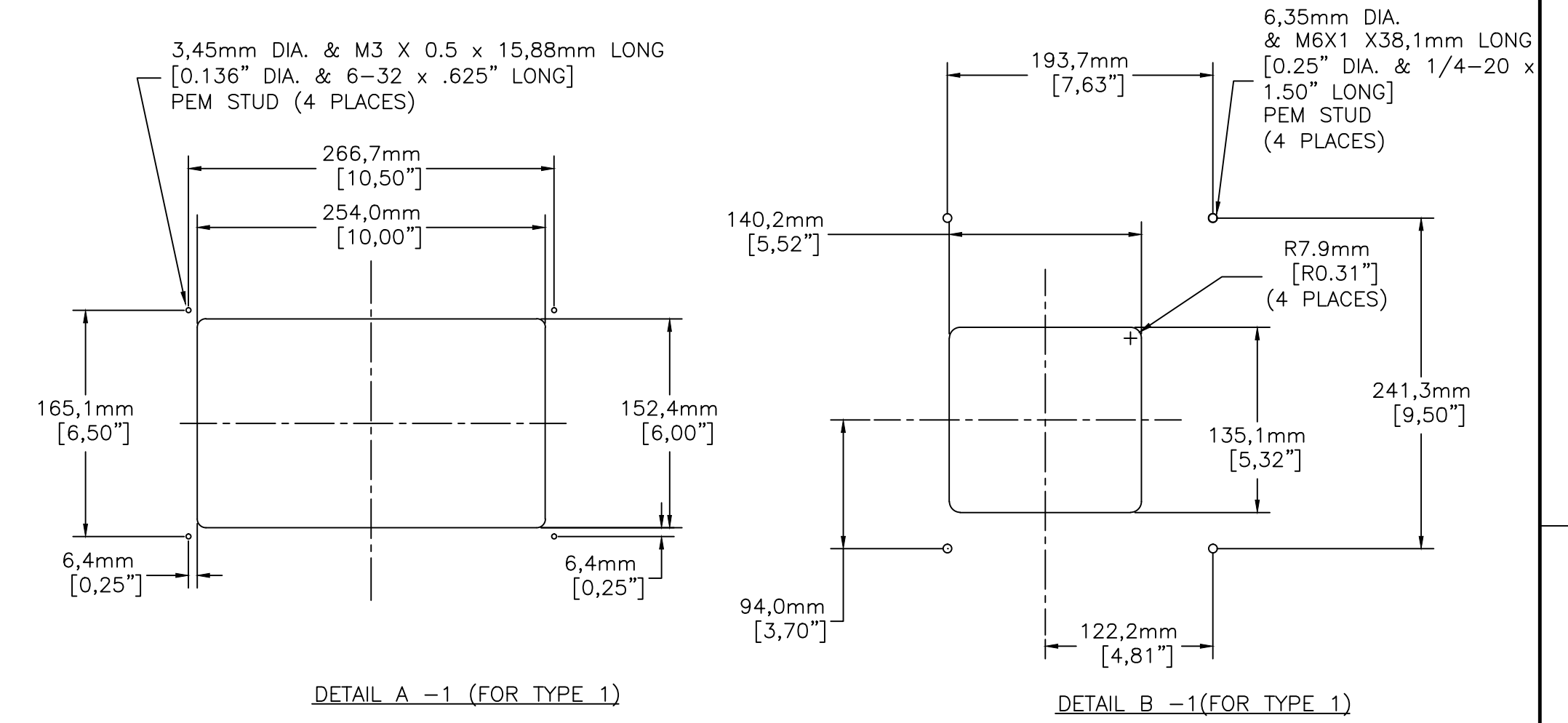
CONTROL PANEL & CONTROLS MOUNTING



DEVICES ON MOUNTING RAILS (FOR SHIPPING ONLY)



CONTROL PANEL & CONTROLS MOUNTING DATA



SIDE VIEW

FRONT VIEW

SIDE VIEW

TRANSFER SWITCHING EQUIPMENT (IEC/CE) RATED UP TO 480 VAC MAX.		A	259901	TR	BK	3/11/16
			254916	TR	BK	5/21/15
PROJECT NAME:		REV. TO SHEET	ECN NO.	BY	APP.	DATE
COMPOSITE OUTLINE						
200 SERIES, E2ATS/E2NTS RATED 260 & 400 AMPERES						
OPEN TYPE, IEC/CE						
BY	DATE	MANUFACTURING TOLERANCES TO BE IN ACCORDANCE WITH ASCO PROCEDURE MP-1-003. FOR PLASTIC PARTS SEE MP-1-005		ASSEM. REF. NO.	COMPUTER GENERATED DRAWING	
TR	5/21/15				SCALE	SIZE DS
CHECKED	BK	PROPERTY OF ASCO POWER TECHNOLOGIES. USE PERMITTED FOR OUR WORK ONLY. ALL RIGHTS OF DESIGN OR INVENTION ARE RESERVED.			DWG. NO.	
PROJECT APPROVAL	BK				978732-002-A	
FINAL APPROVAL					ASCO® ASCO POWER TECHNOLOGIES, L.P. FLORHAM PARK, NEW JERSEY 07932 U.S.A.	2 OF 2