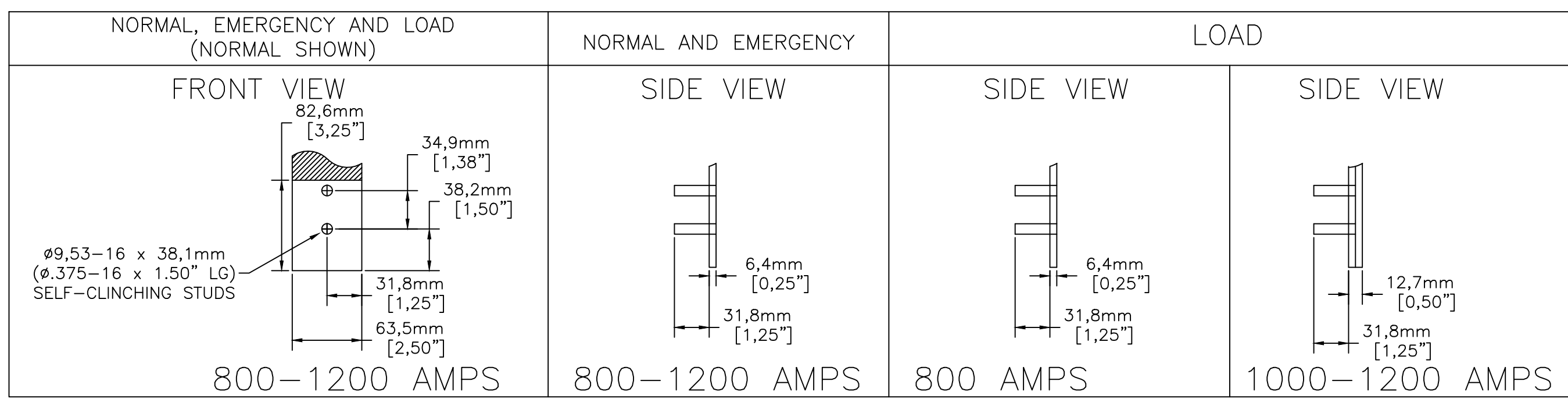


OUTLINE & MOUNTING FOR ASCO® 200 SERIES AUTOMATIC TRANSFER SWITCHING EQUIPMENT TYPE H2ATS, H2NTS, H2ADTS & H2NDTS RATED 800-1200 AMPERES

MAXIMUM BUS BAR BOLTING SURFACE (PER PHASE) 82,6mm [3.25"] x 63,5mm [2.50"]
 BUS TERMINATION DETAIL



| H7ATS SWITCH RATING (AMPS) | POLES | WEIGHTS KG (LB) |
|----------------------------|-------|-----------------|
| 800 | 2 | 54 (119) |
| 800 | 3 | 64 (142) |
| 800 | 4 | 75 (165) |
| 1000, 1200 | 2 | 59 (131) |
| 1000, 1200 | 3 | 73 (160) |
| 1000, 1200 | 4 | 86 (189) |

GENERAL NOTES

- THE STANDARD SWITCH CONFIGURATION IS FOR EMERGENCY & LOAD OUT THE TOP AND NORMAL OUT THE BOTTOM. OPTIONAL SWITCH CONFIGURATION LOAD OUT THE BOTTOM. CONSULT FACTORY FOR OTHER SWITCH CONFIGURATION.
- NEUTRAL CONFIGURATIONS:
 AN OPTIONAL FULL RATED NEUTRAL CONFIGURATION FOR EACH SOURCE AND THE LOAD MAY BE PROVIDED, WHEN EQUIPPED IT IS IN ONE OF THE FOLLOWING FORMATS AS SPECIFIED BY THE CATALOG NUMBER NO. NEUTRAL TYPE:
 (A) SOLID (COPPER BUS) NEUTRAL
 (B) SWITCHED NEUTRAL POLE
 (C) OVERLAPPING NEUTRAL POLE
- THE STANDARD MECHANICAL (SCREW TYPE) AL/CU TERMINAL LUGS ARE SHOWN FOR REFERENCE (800-1200).
- SWITCH NEUTRAL POLE IS SHOWN FOR REFERENCE.
- WHEN INSTALLING CONDUCTORS, CONNECT TO SIMILARLY MARKED PHASES OF NORMAL, EMERGENCY & LOAD.
- ALL INTERNAL CONNECTIONS ARE MADE AT FACTORY.
- MAINTAIN ELECTRICAL CLEARANCE OF 25,4mm (1.00") BETWEEN LIVE METAL PARTS AND GROUNDED METAL.
- WHEN MOUNTING THE TRANSFER SWITCHING DEVICE IN THE ENCLOSURE, THE CONTROL PANEL(S) AND OPERATOR CONTROLS SHOULD BE MOUNTED ON THE INSIDE, REAR SURFACE OF THE DOOR. 152,4mm (6.00") MIN. DEPTH TO TRANSFER SWITCHING DEVICE FOR CONTROLS IS REQUIRED.
- THE CONTROL PANEL(S) IS CONNECTED TO TRANSFER SWITCHING DEVICE BY A HARNESS WITH A QUICK DISCONNECT PLUG(S). THE HARNESS EXITS TRANSFER SWITCHING DEVICE ON THE RIGHT SIDE. CONSULT FACTORY FOR EXTENSION HARNESSES.
- OPTIONAL ACCESSORY ADD-ON PANELS. (SEE SHEET 2 FOR TYPICAL MOUNTING).
- FOR TYPE 1 ENCLOSURE SEE DETAIL A -1 AND DETAIL B -1 FOR CUTOFF DATA.
 FOR TYPE 3R, 4, & 12 ENCLOSURE SEE DETAIL A -2 & DETAIL B -2 FOR CUTOFF DATA.
 GASKETS AND BEZELS ARE PROVIDED FOR TYPE 3R, 4, & 12 ENCLOSURE.
- CUSTOMER TERMINAL BLOCKS (SEE SHEET 2):
 FOR ADTS AND NDTs THE TB WILL BE MOUNTED ON THE UPPER RIGHT INSIDE OF THE ENCLOSURE.
 FOR ATS AND NTS THE TB WILL BE MOUNTED ON THE TRANSFER SWITCHING DEVICE.

CABLING NOTES

- ALL SIZES SUPPLIED STANDARD WITH MECHANICAL (SCREW TYPE) LUGS. (SEE AMP SIZE BELOW)
 A. LUG MATERIAL: ALUMINUM ALLOY 6061-T6 WITH ELECTRO TIN PLATED FINISH.
 B. SCREW MATERIAL: ALUMINUM ALLOY 6262-T9 WITH ELECTRO TIN PLATED FINISH.
 NOTE: CONSULT FACTORY FOR OTHER CABLING & TERMINATION REQUIREMENTS.

| POWER CONNECTIONS | | |
|--------------------------------------|----------------------|-------------------------------|
| RANGE OF Al-Cu CONDUCTOR SIZES | | |
| ISO CROSS SECTION (mm ²) | | |
| (USE STRANDED TYPE CONDUCTORS) | | |
| SWITCH RATING (AMPS) | CONDUCTOR SIZE RANGE | RECOMMENDED TIGHTENING TORQUE |
| 800-1200 | FOUR 50-300 | 42,4 Nm |

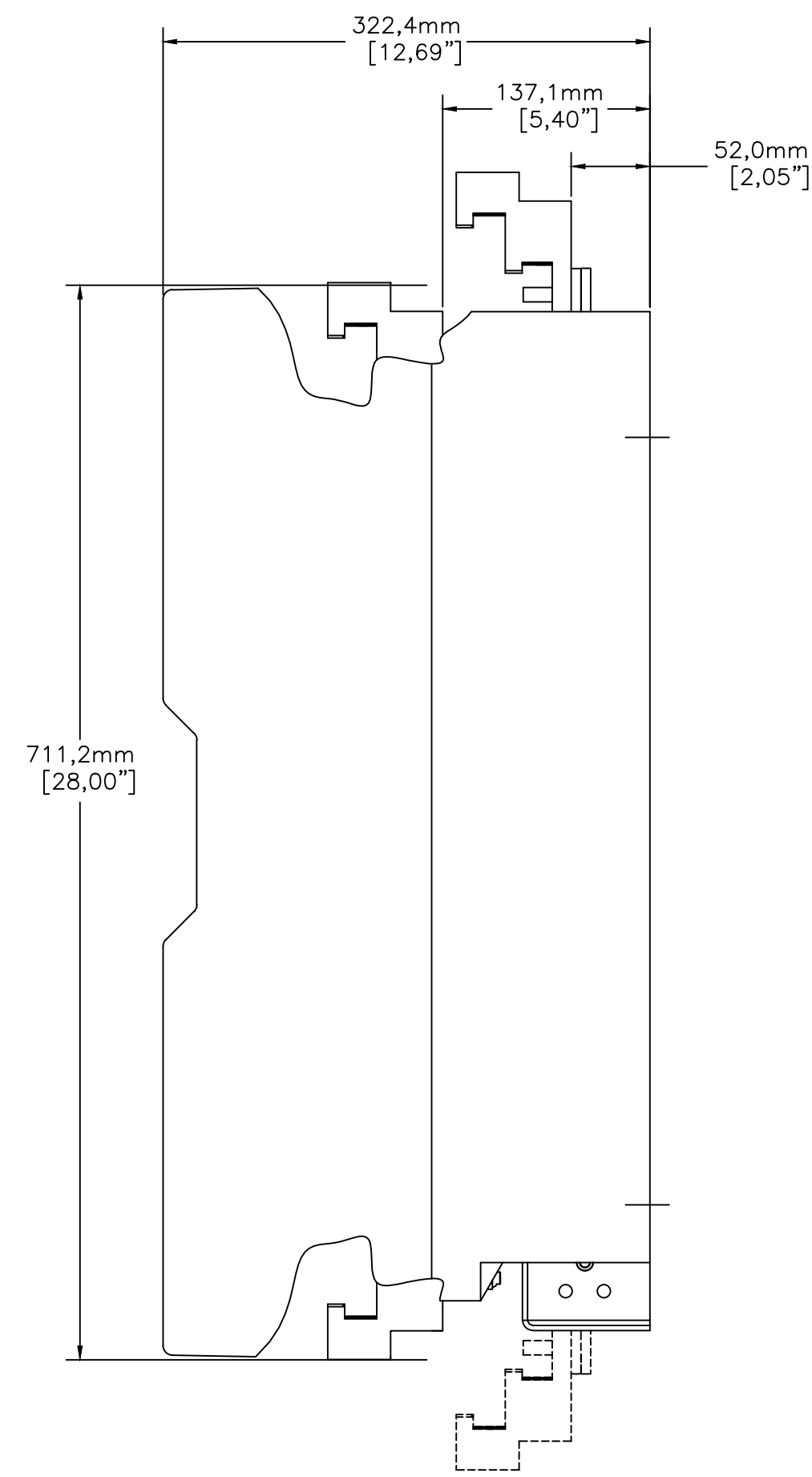
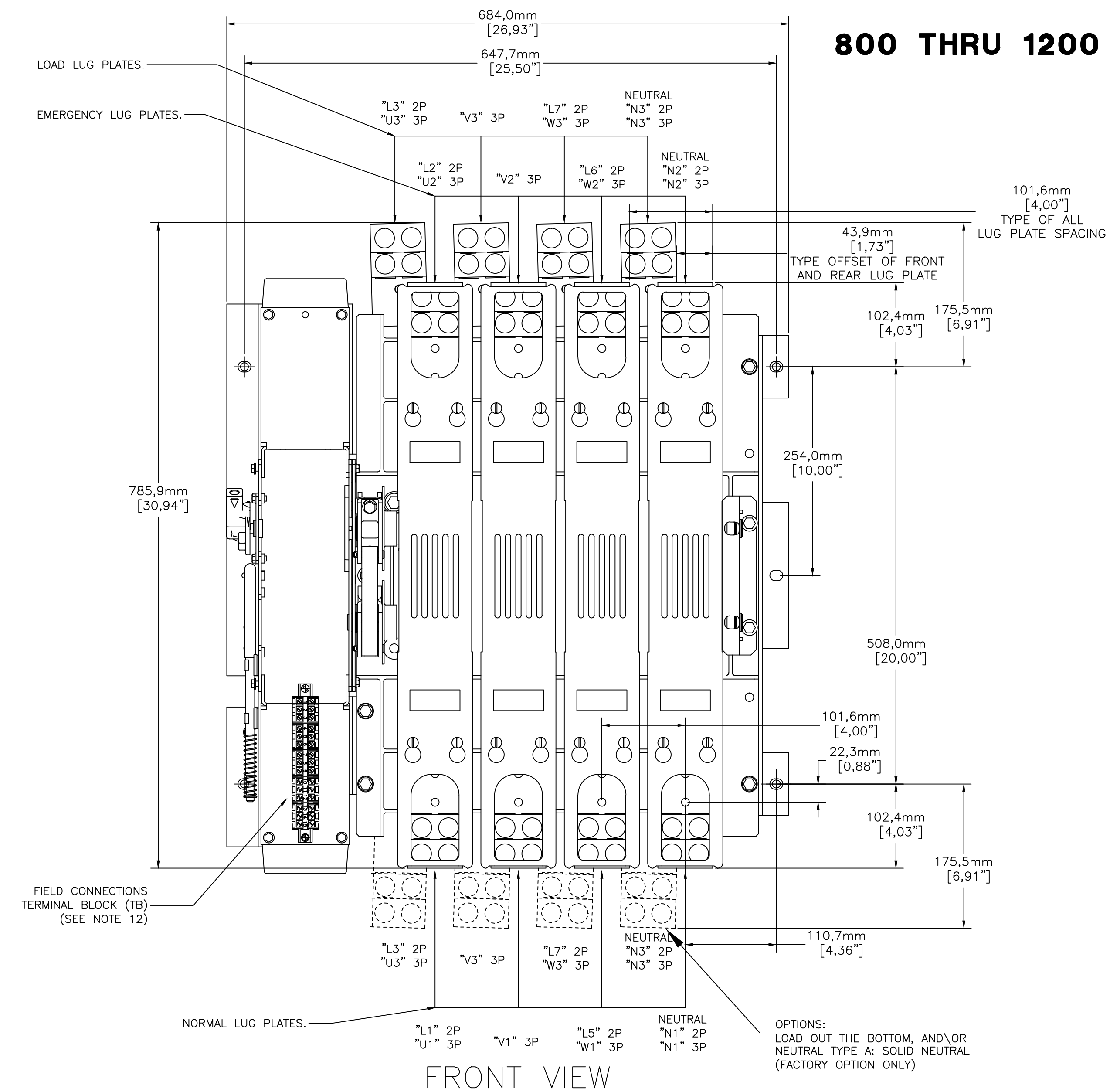
NOTES 800-1200 AMP SWITCHES

- SUPPLIED WITH STANDARD MECHANICAL (SCREW TYPE) LUGS ON THE NORMAL, EMERGENCY & LOAD BUS STABS. ONE (1) LUG PER PHASE AND NEUTRAL EACH SUITABLE FOR CONNECTION OF (4) 50-300 mm² [(4) 1/0 - 750 MCM AL/CU] CABLE.

| SWITCH RATING (AMPS) | HEIGHT | WIDTH | DEPTH |
|----------------------|-------------------|-------------------|------------------|
| 800,1000 | 1828,8mm (72.00") | 863,6mm (34.00")* | 508,0mm (20.00") |
| 1200 | 2209,8mm (87.00") | 965,2mm (38.00") | 584,2mm (23.00") |

- NOTE: *=WIDTH MAY BE 762,0mm (30.00") IF NO CABLES ARE TO BE RUN ALONG THE SIDE OF TRANSFER SWITCHING DEVICE, "1200 AMPS" NEEDS VENTILATION TOP AND BOTTOM.
- NOTE: 1200 AMP T/S REQUIRES MIN. 619cm² [96.00"]² OF VENTILATION. 309cm² [48.00"]² TOP AND BOTTOM. VENTILATION SHOULD BE PLACED FRONT AND REAR OF ENCLOSURE UNLESS VENTILATION IS IMPEDED ON THE REAR. THEN ALL VENTILATION MUST BE PROVIDED ON FRONT OF ENCLOSURE

800 THRU 1200 AMPS



SIDE VIEW

| | | | | |
|---|---------|----|----|----------|
| B | 265708 | TR | BK | 03/21/17 |
| | SEE ECN | | | |
| A | 264276 | WK | BK | 11/18/16 |
| | SEE ECN | | | |
| | 255133 | TR | BK | 6/4/15 |
| | ISSUE | | | |

PROJECT NAME: **COMPOSITE** **OUTLINE**

200 SERIES TS "H"
800-1200 AMP OPEN TYPE (ACC 97N)

| | | | | |
|------------------|------|---|-----------------|---|
| BY | DATE | MANUFACTURING TOLERANCES TO BE IN ACCORDANCE WITH ASCO PROCEDURE MP-1-003. FOR PLASTIC PARTS SEE MP-1-005 | ASSEM. REF. NO. | COMPUTER GENERATED DRAWING |
| DRAWN BY | TR | 6/4/15 | | SCALE 1/4" = 1" SIZE DS |
| CHECKED | BK | 6/4/15 | | DWG. NO. |
| PROJECT APPROVAL | BK | 6/4/15 | | PROPERTY OF ASCO POWER TECHNOLOGIES. USE PERMITTED FOR OUR WORK ONLY. ALL RIGHTS OF DESIGN OR INVENTION ARE RESERVED. |
| FINAL APPROVAL | | | | 1001394-004-A |

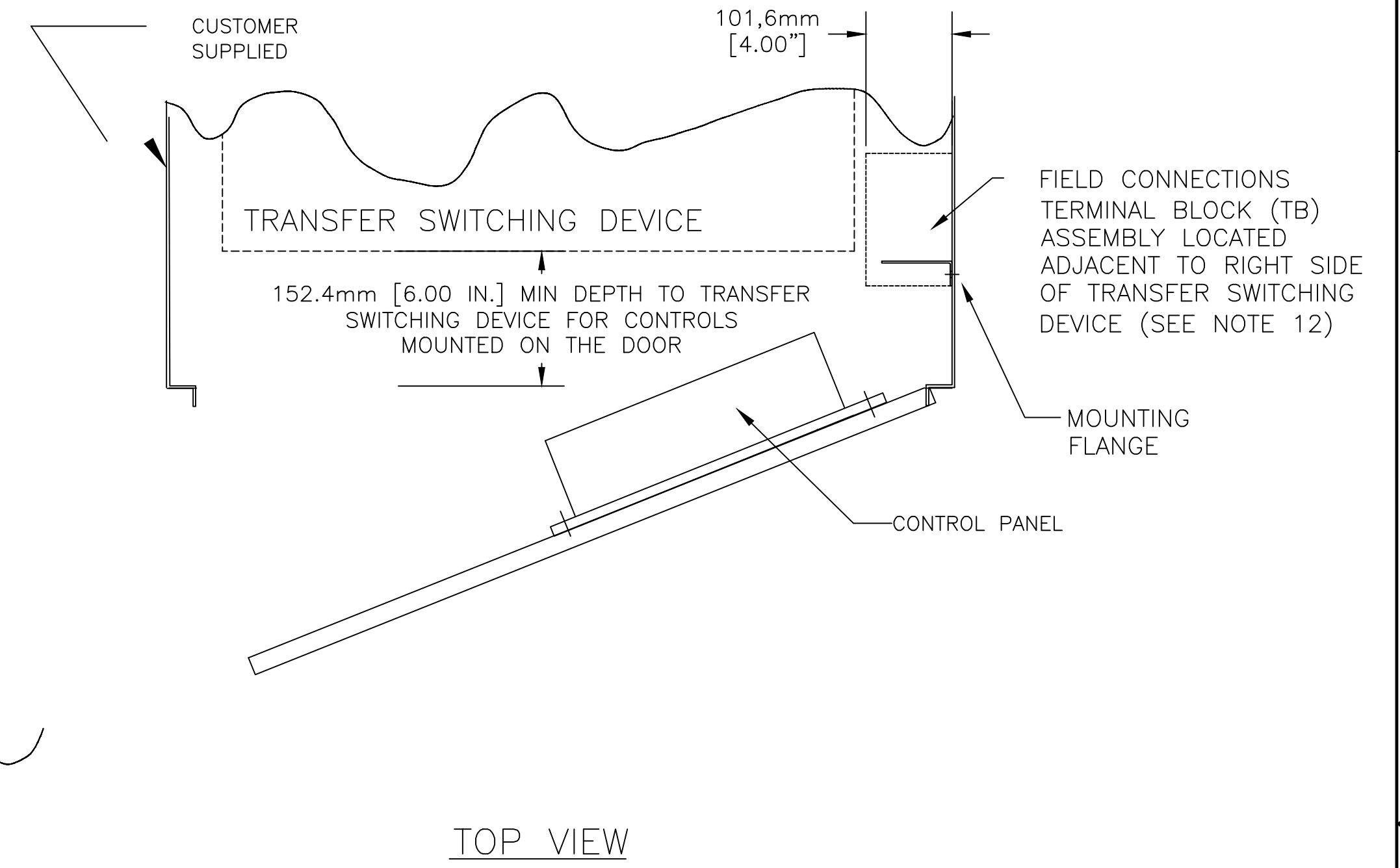
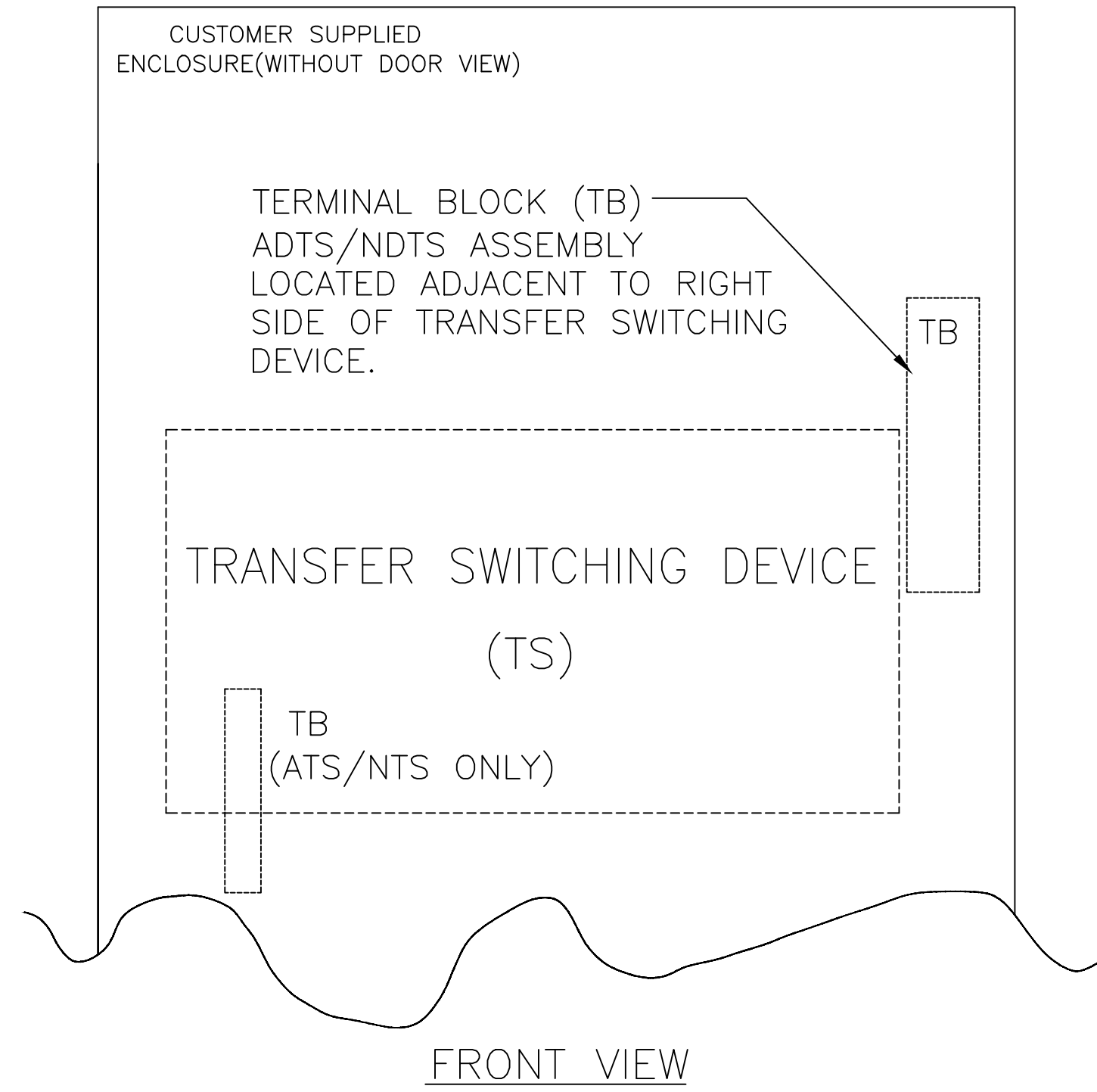
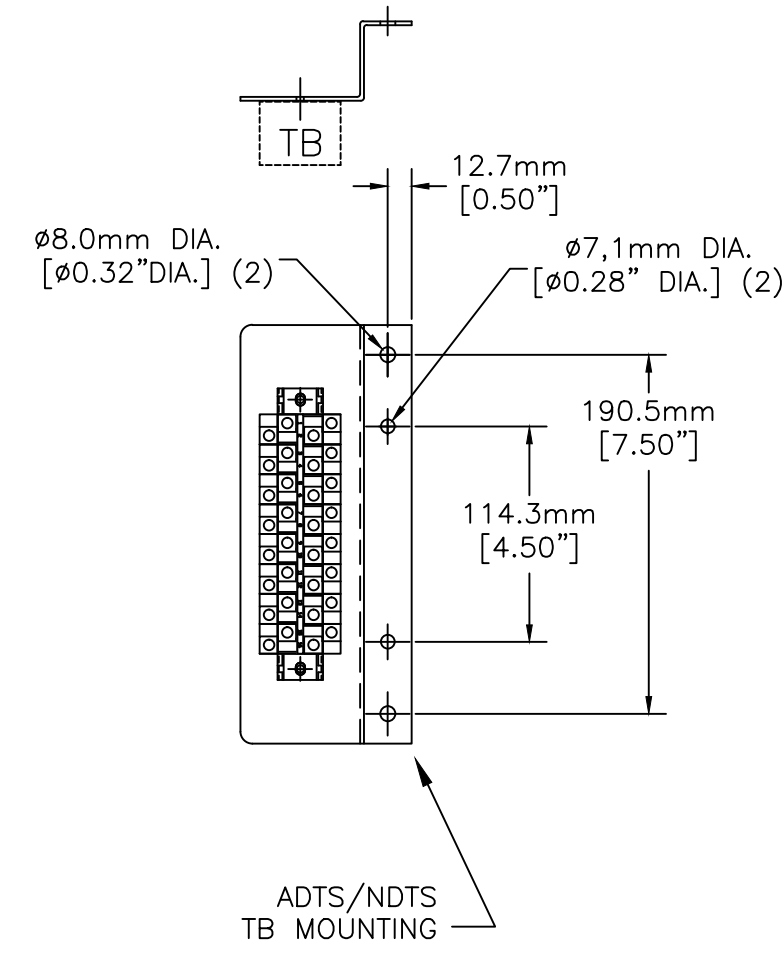
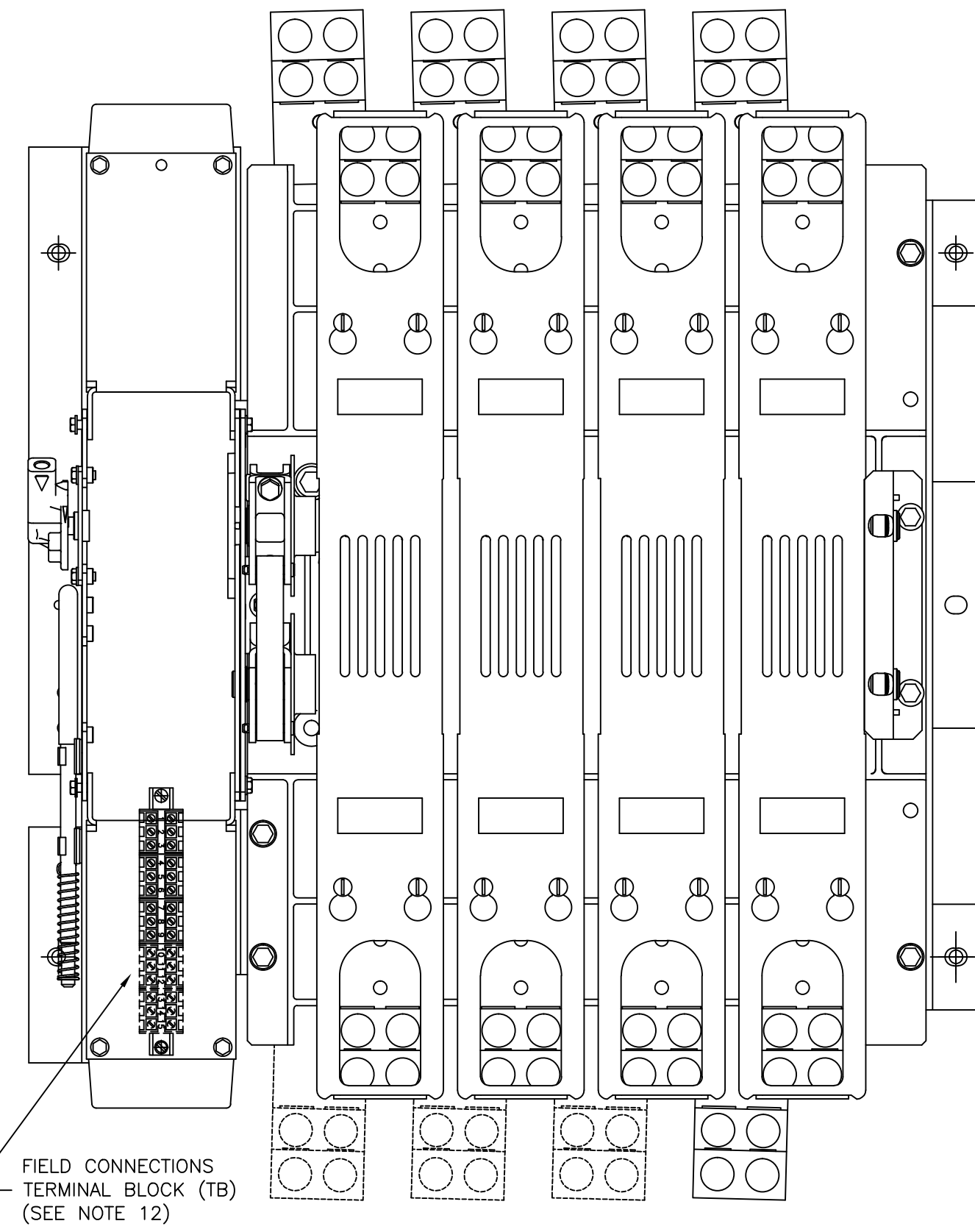
ASCOTM ASCO POWER TECHNOLOGIES, L.P.
 FLOHAM PARK, NEW JERSEY 07932 U.S.A.

DRAWING B ECU NO. 265708 SHEET 1 OF 3

8 7 6 5 4 3 2 1

OUTLINE FOR ASCO® 200 SERIES 800-1200 AMPERE "H" FRAME (H2ATS,H2NTS,H2ADTS,H2NDTS) FRONT CONNECTED TRANSFER SWITCHING EQUIPMENT OPEN TYPE

MOUNTING OF FIELD TERMINAL BLOCK ASSEMBLY (TB) (SEE NOTE 12)

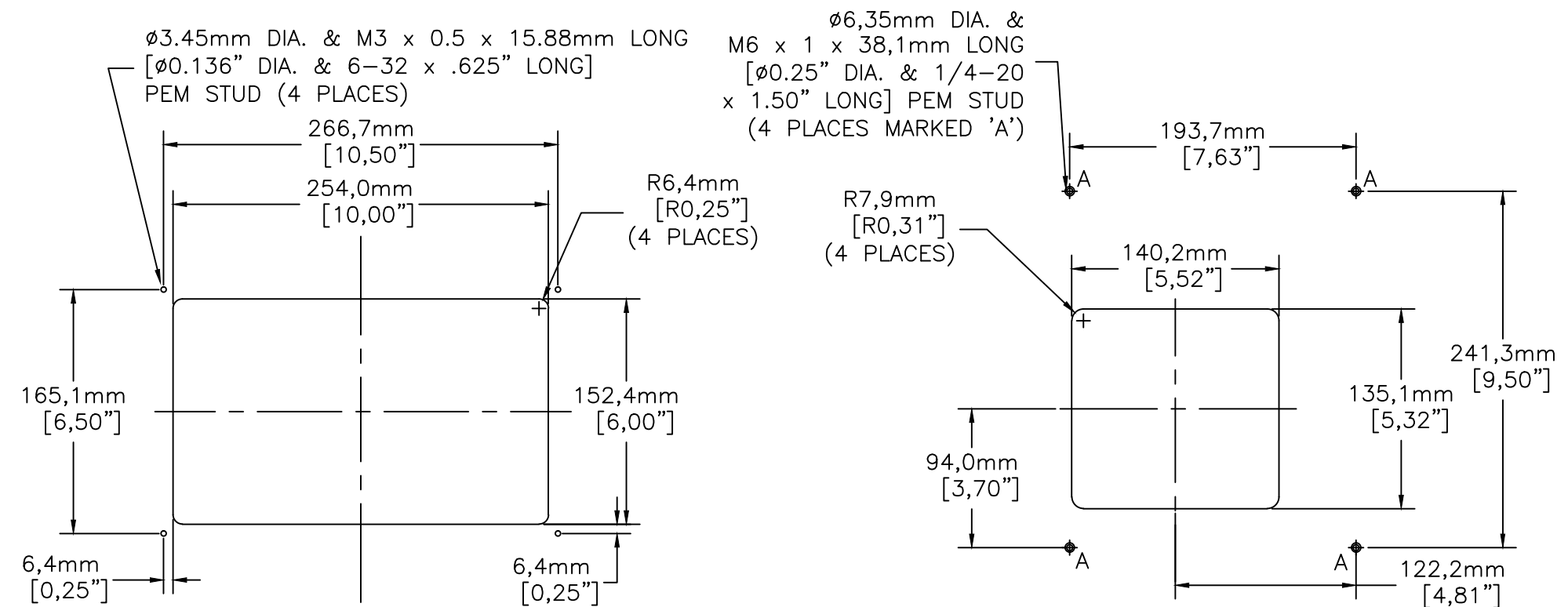


| | | | | |
|---------|--------|----|----|----------|
| B | 265708 | TR | BK | 03/21/17 |
| SEE ECN | | | | |
| A | 264276 | WK | BK | 11/18/16 |
| SEE ECN | | | | |
| - | 255133 | TR | BK | 6/4/15 |
| ISSUE | | | | |

| | | | | | | |
|----------------------------------|------|---|---|---------------------------------------|----------------------------|-----------------------------|
| PROJECT NAME: | | REV. TO SHEET | ECN NO. | BY | APP. | DATE |
| COMPOSITE | | OUTLINE | | | | |
| 200 SERIES TS "H" | | | | | | |
| 800-1200 AMP OPEN TYPE (ACC 97N) | | | | | | |
| BY | DATE | MANUFACTURING TOLERANCES TO BE IN ACCORDANCE WITH ASCO PROCEDURE MP-1-003. FOR PLASTIC PARTS SEE MP-1-055 | | ASSEM. REF. NO. | SCALE 1/4" = 1" SIZE DS | |
| DRAWN BY | TR | 6/4/15 | | | COMPUTER GENERATED DRAWING | |
| CHECKED | BK | 6/4/15 | PROPERTY OF ASCO POWER TECHNOLOGIES. USE PERMITTED FOR OUR WORK ONLY. ALL RIGHTS OF DESIGN OR INVENTION ARE RESERVED. | | DWG. NO. | |
| PROJECT APPROVAL | BK | 6/4/15 | | | 1001394-004-A | |
| FINAL APPROVAL | | | | | DRAWING B | |
| ASCO® | | ASCO POWER TECHNOLOGIES, L.P. | | FLORHAM PARK, NEW JERSEY 07932 U.S.A. | | ECN NO. 265708 SHEET 2 OF 3 |

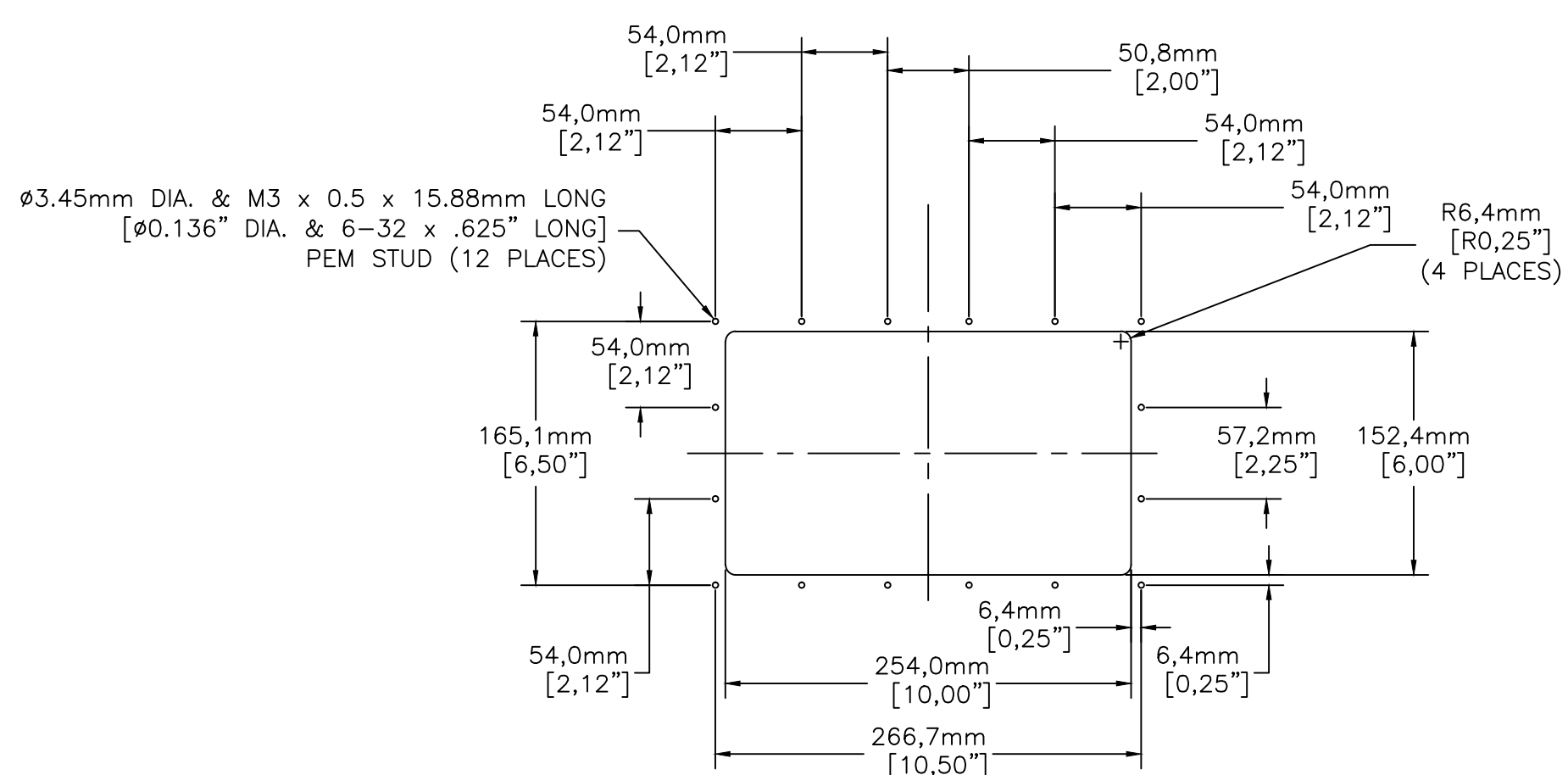
OUTLINE FOR ASCO® 200 SERIES 800-1200 AMPERE "H" FRAME (H2ATS,H2NTS,H2ADTS,H2NDTS) FRONT CONNECTED TRANSFER SWITCHING EQUIPMENT OPEN TYPE

CONTROL PANEL & CONTROLS MOUNTING DATA

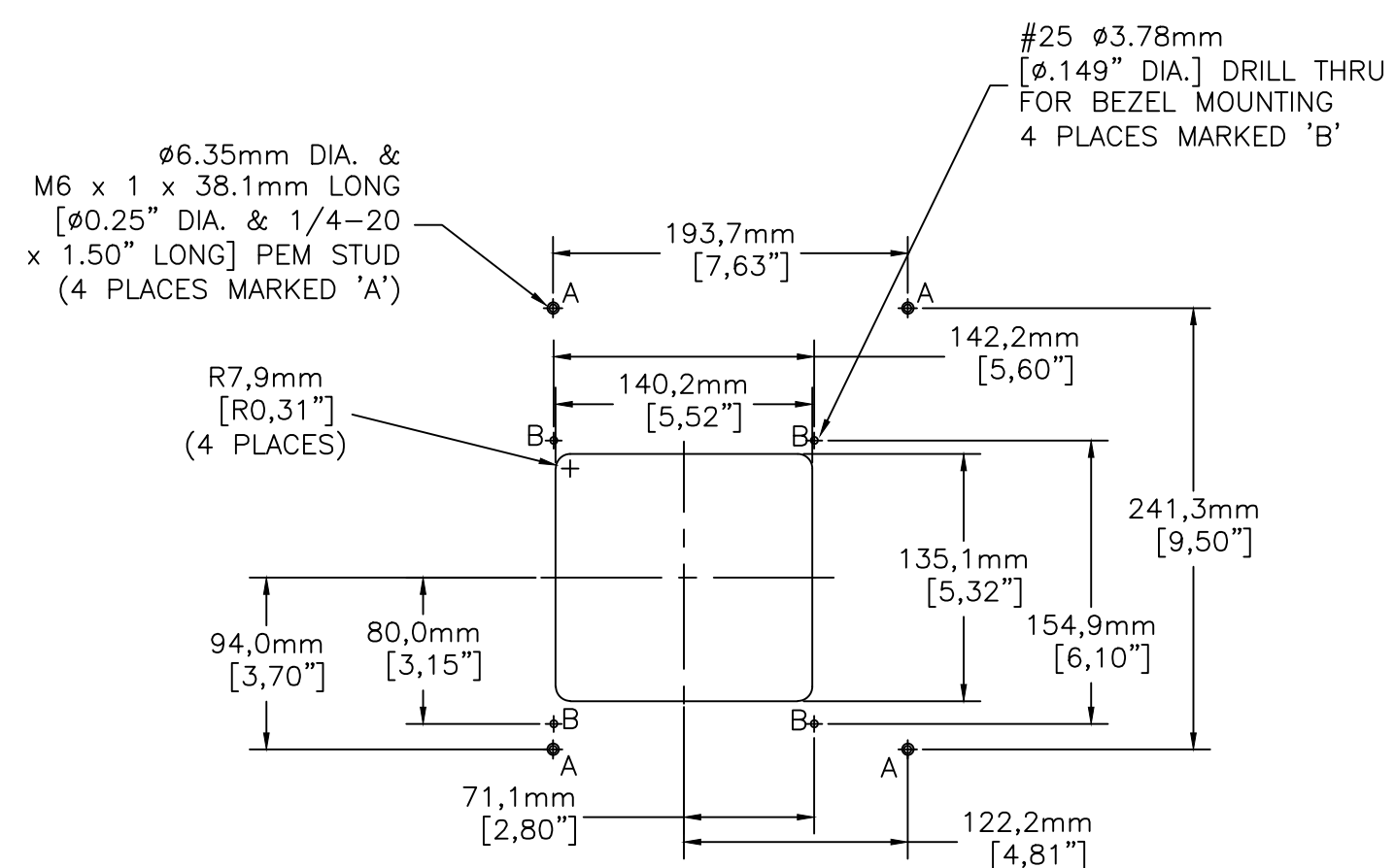


DETAIL A -1 (FOR TYPE 1)

DETAIL B -1 (FOR TYPE 1)

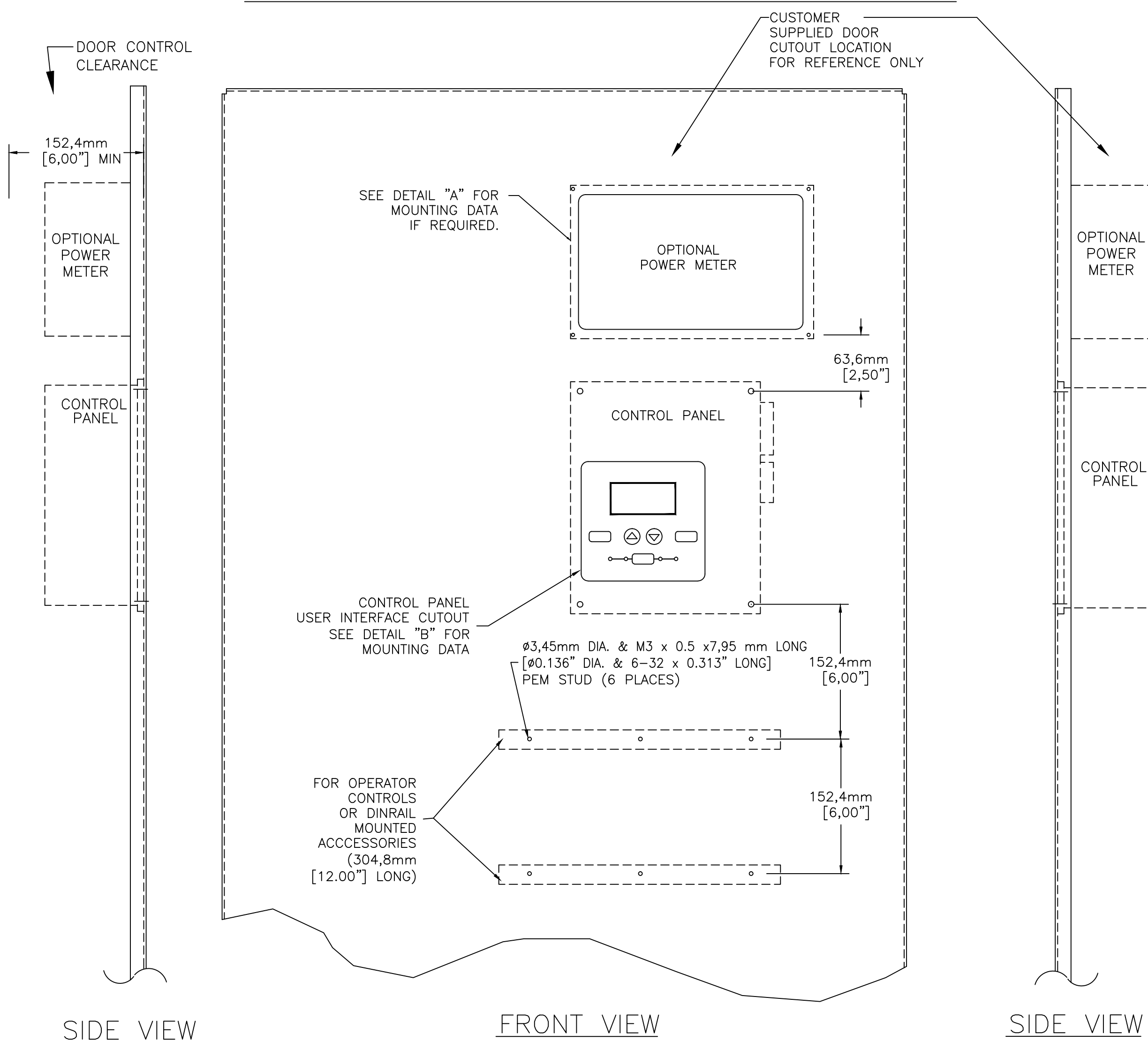


DETAIL A -2 (FOR TYPE 3R, 12 & 4)



DETAIL B -2 (FOR TYPE 3R, 12 & 4)

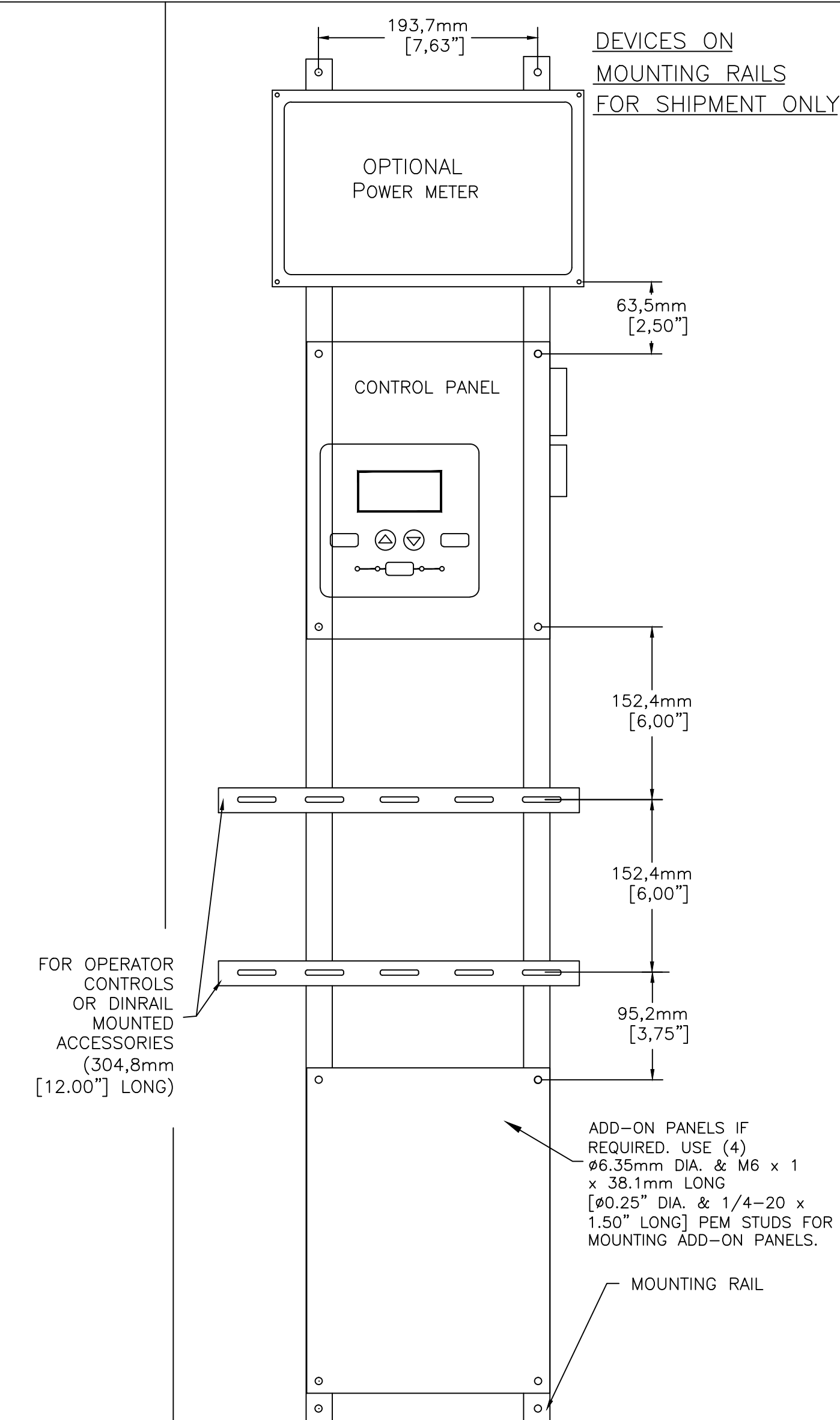
CONTROL PANEL & CONTROLS MOUNTING



SIDE VIEW

FRONT VIEW

SIDE VIEW



| | | | | |
|---|---------|----|----|----------|
| B | 265708 | TR | BK | 03/21/17 |
| | SEE ECN | | | |
| A | 264276 | WK | BK | 11/18/16 |
| | SEE ECN | | | |
| | 255133 | TR | BK | 6/4/15 |
| | ISSUE | | | |

| | | | | | | |
|--|------|---|---|-----------------|---------------------------------------|---------|
| PROJECT NAME: | | REV. TO SHEET | ECN NO. | BY | APP. | DATE |
| COMPOSITE | | OUTLINE | | | | |
| 200 SERIES TS "H" 800-1200 AMP OPEN TYPE (ACC 97N) | | | | | | |
| BY | DATE | MANUFACTURING TOLERANCES TO BE IN ACCORDANCE WITH ASCO PROCEDURE MP-1-003. FOR PLASTIC PARTS SEE MP-1-035 | | ASSEM. REF. NO. | COMPUTER GENERATED DRAWING | |
| DRAWN BY | TR | 6/4/15 | | | SCALE 1/4" = 1" | SIZE DS |
| CHECKED | BK | 6/4/15 | PROPERTY OF ASCO POWER TECHNOLOGIES. USE PERMITTED FOR OUR WORK ONLY. ALL RIGHTS OF DESIGN OR INVENTION ARE RESERVED. | | DWG. NO. | |
| PROJECT APPROVAL | BK | 6/4/15 | | | 1001394-004-A | |
| FINAL APPROVAL | | | | | DRAWING B EQ. NO. 265708 SHEET 3 OF 3 | |
| ASCO | | ASCO POWER TECHNOLOGIES, L.P. FLOHAM PARK, NEW JERSEY 07932 U.S.A. | | | | |