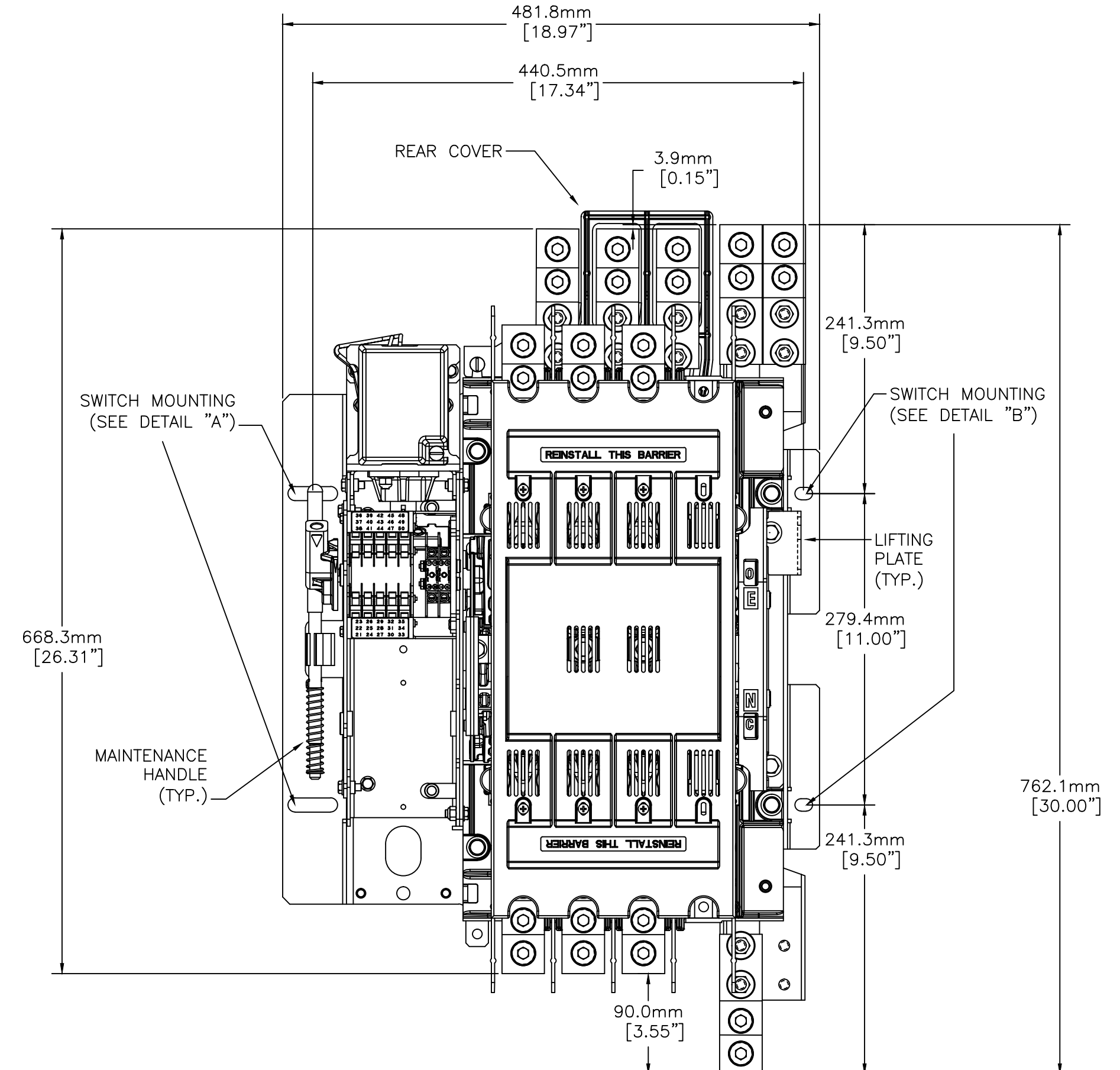
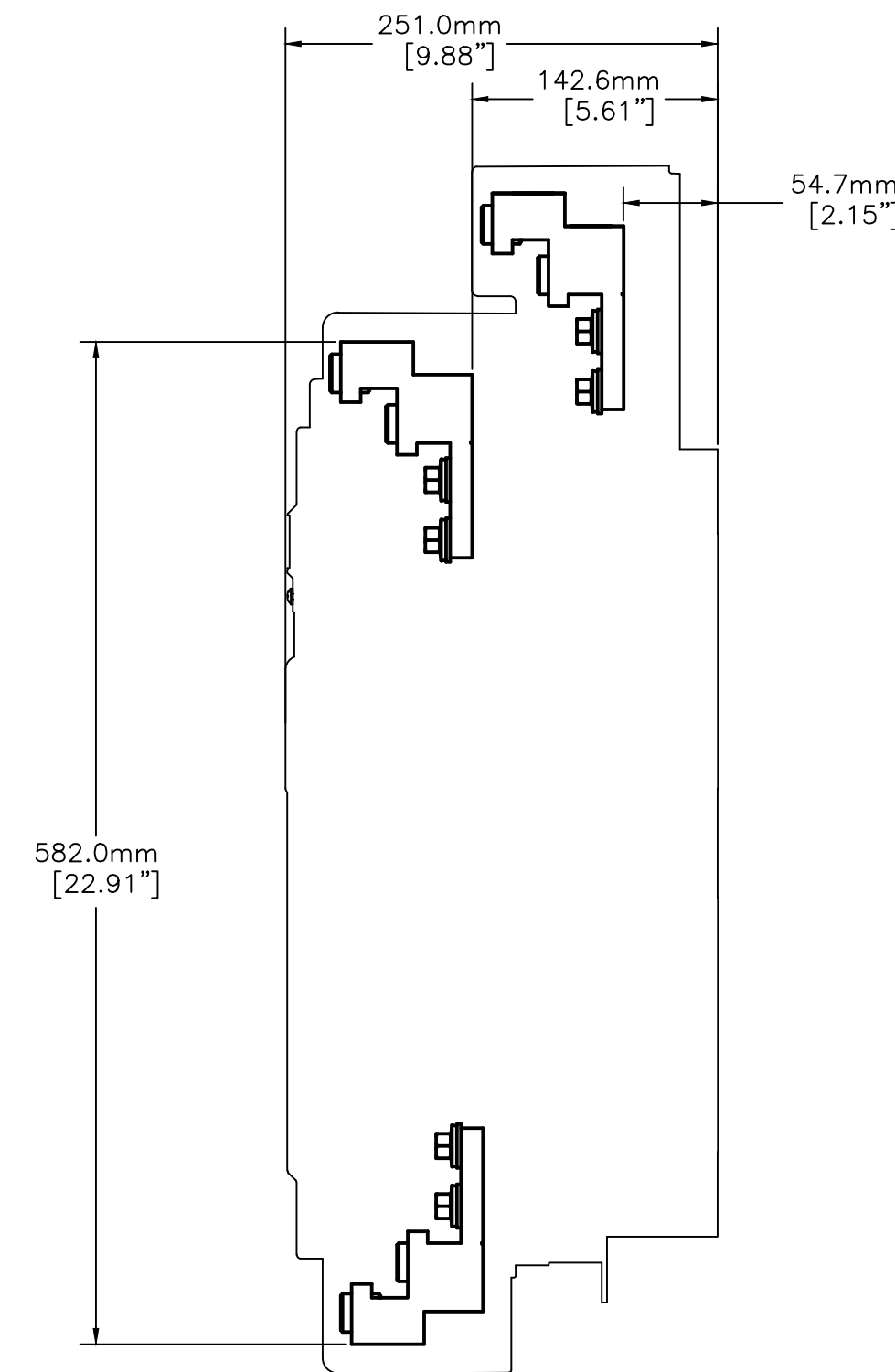
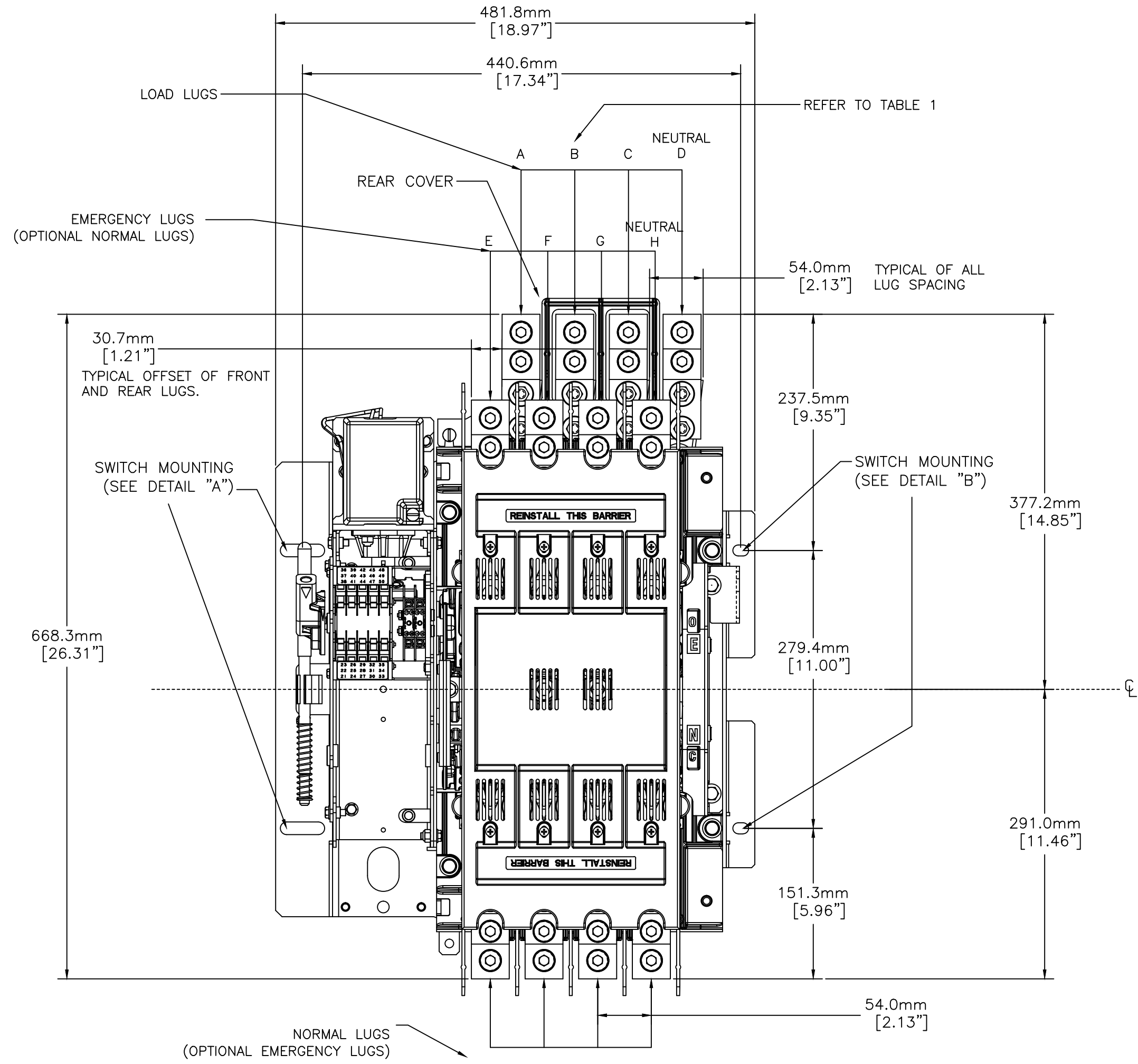


OUTLINE FOR ASCO® 300 SERIES 600 AMPERE "J" FRAME (J2ATS,J2NTS,J2ADTS,J2NDTS) FRONT CONNECTED TRANSFER SWITCHING EQUIPMENT OPEN TYPE

FRONT VIEW

SIDE VIEW

FRONT VIEW



600 AMP ATS/NTS W/ SWITCHING NEUTRAL

600 AMP ATS/NTS W/ SOLID NEUTRAL

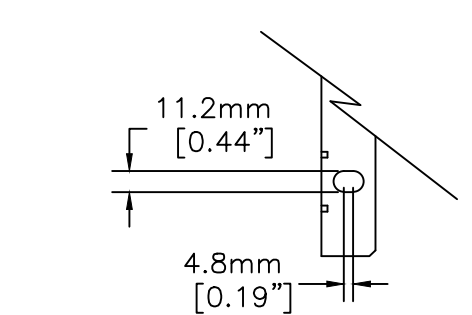
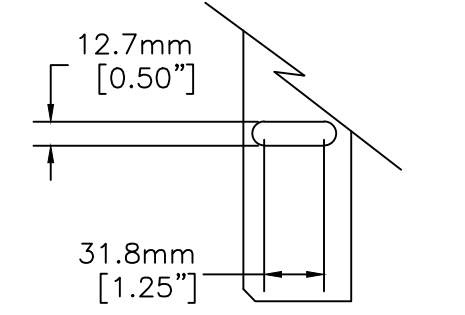
TABLE 1: POLE LOCATIONS

POLES	A	B	C	D	E	F	G	H	J	K	L	M
2	LL1		LL2	LL0	EL1		EL2	ELO	NL1		NL2	NL0
3	LA	LB	LC	LN	EA	EB	EC	EN	NA	NB	NC	NN

SWITCH MOUNTING DETAIL

DETAIL "A"

DETAIL "B"



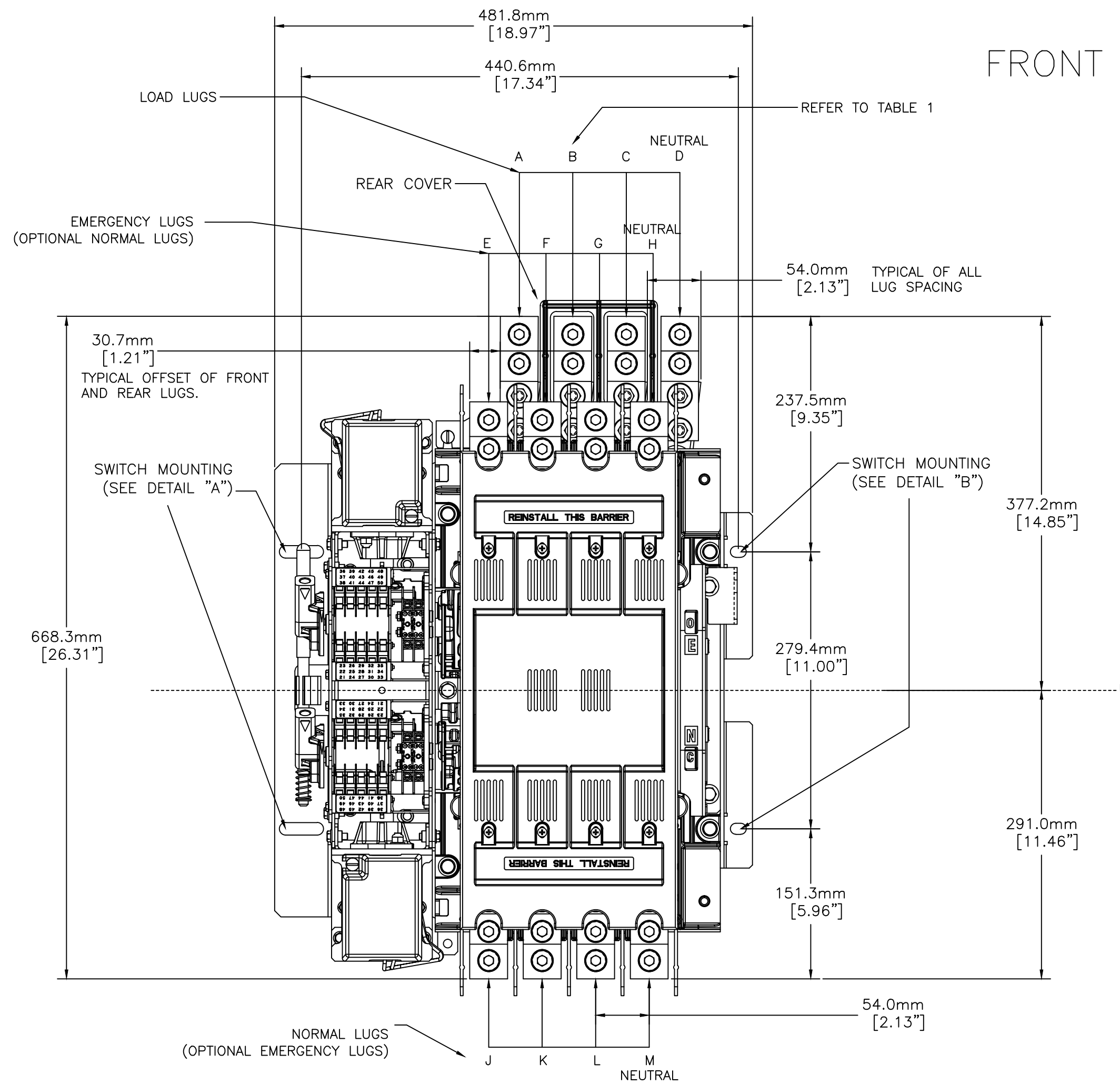
600A UNITS APPROXIMATE SHIPPING WEIGHT, LBS (KG)

SWITCH TYPE	POLES	WEIGHTS KG (LB)
ATS / NTS	2	33 (73)
ATS / NTS	3	36 (80)
ATS / NTS	4	39 (87)
ADTS / NDTs	2	40 (89)
ADTS / NDTs	3	44 (96)
ADTS / NDTs	4	47 (103)

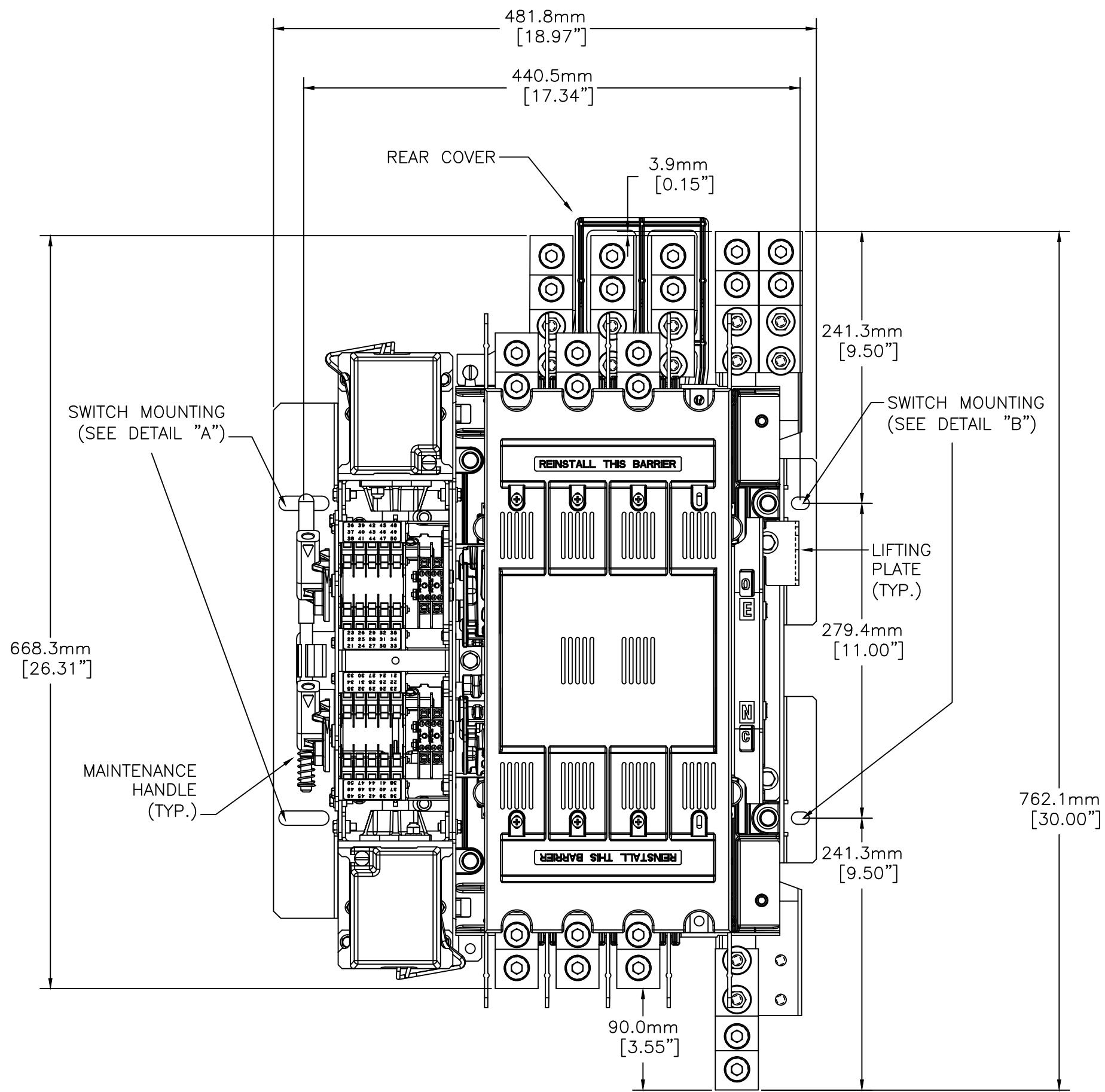
PROJECT NAME:		REV. TO SHEET	ECN NO.	BY	APP.	DATE
COMPOSITE OUTLINE		A	265710	TR	BK	03/22/17
200 SERIES J2ATS/J2NTS/J2ADTS/J2NDTS 600 AMPS.		SEE ECN				
600A OPEN TYPE (ACC. 97N)		254918 TR BK 5/15/15				
ISSUE		—				
MANUFACTURING TOLERANCES TO BE IN ACCORDANCE WITH ASCO PROCEDURE MP-1-003. FOR PLASTIC PARTS SEE MP-1-005.		ASSEM. REF. NO.				
PROPERTY OF ASCO POWER TECHNOLOGIES. USE PERMITTED FOR OUR WORK ONLY. ALL RIGHTS OF DESIGN OR INVENTION ARE RESERVED.		COMPUTER GENERATED DRAWING				
DRAWN BY	TR	DATE	5/21/15	SCALE	NONE	SIZE DS
CHECKED BY	BK	DATE	5/21/15	DWG. NO.		
PROJECT APPROVAL	BK	DATE	5/21/15	1001393-005-A		
FINAL APPROVAL		DATE		DRAWING A		
ASCO® ASCO POWER TECHNOLOGIES, L.P. FLOHAM PARK, NEW JERSEY 07932 U.S.A.		ECN 265710 SHEET 1 OF 3				

OUTLINE FOR ASCO® 300 SERIES 600 AMPERE "J" FRAME (J2ATS,J2NTS,J2ADTS,J2NDTS) FRONT CONNECTED TRANSFER SWITCHING EQUIPMENT OPEN TYPE

FRONT VIEW



600 AMP ADTS/NDTS W/ SOLID NEUTRAL



GENERAL NOTES

1. THE STANDARD SWITCHING DEVICE CONFIGURATION IS FOR TOP (LOAD & EMERGENCY) AND BOTTOM (NORMAL). OPTIONALLY, THE SWITCHING DEVICE MAY BE SUPPLIED WITH REVERSE SOURCES AND/OR BOTTOM LOAD. (REFER TO THE WIRING DIAGRAM FURNISHED WITH EACH TRANSFER SWITCHING DEVICE TO DETERMINE TERMINATION POSITIONS).
2. NEUTRAL CONFIGURATIONS:
AN OPTIONAL FULL RATED NEUTRAL CONFIGURATION FOR EACH SOURCE AND THE LOAD MAY BE PROVIDED. WHEN EQUIPPED IT IS IN ONE OF THE FOLLOWING FORMATS AS SPECIFIED BY THE CATALOG NUMBER NO. NEUTRAL TYPE:
(A) SOLID (COPPER BUS) NEUTRAL
(B) SWITCHED NEUTRAL POLE
(C) OVERLAPPING NEUTRAL POLE
3. THE STANDARD MECHANICAL (SCREW TYPE) AL/CU TERMINAL LUGS ARE SHOWN FOR REFERENCE.
4. WHEN INSTALLING CONDUCTORS, CONNECT TO SIMILARLY MARKED PHASES OF NORMAL, EMERGENCY & LOAD.
5. ALL INTERNAL CONNECTIONS ARE MADE AT FACTORY.
6. MAINTAIN ELECTRICAL CLEARANCE OF 25.4mm [1.00"] BETWEEN LIVE METAL PARTS AND GROUNDED METAL.
7. WHEN MOUNTING THE SWITCHING IN THE ENCLOSURE, THE CONTROL PANEL(S) AND OPERATOR CONTROLS SHOULD BE MOUNTED ON THE INSIDE, REAR SURFACE OF THE DOOR. 152.4mm [6.00"]. MIN. DEPTH TO TRANSFER SWITCHING DEVICE FOR CONTROLS IS REQUIRED.
8. THE CONTROL PANEL(S) IS CONNECTED TO THE TRANSFER SWITCHING DEVICE BY A HARNESS WITH A QUICK DISCONNECT PLUG(S). THE HARNESS EXITS THE TRANSFER SWITCHING DEVICE ON THE RIGHT SIDE. CONSULT FACTORY FOR EXTENSION HARNESSES.
9. FOR TYPE 1 ENCLOSURE SEE DETAIL A -1 AND DETAIL B -1 FOR CUTOUT DATA. FOR TYPE 3R, 4, & 12 ENCLOSURE SEE DETAIL A -2 & DETAIL B -2 FOR CUTOUT DATA. GASKETS AND BEZELS ARE PROVIDED FOR TYPE 3R, 4, & 12 ENCLOSURE.
10. CUSTOMER TERMINAL BLOCKS:
FOR ADTS AND NDTs THE TB WILL BE MOUNTED ON THE UPPER RIGHT INSIDE OF THE ENCLOSURE AS INDICATE BELOW.
FOR ATS AND NTS THE TB WILL BE MOUNTED ON THE TRANSFER SWITCHING FRAME DEVICE AS INDICATED ON THIS PAGE.

POWER CONNECTIONS

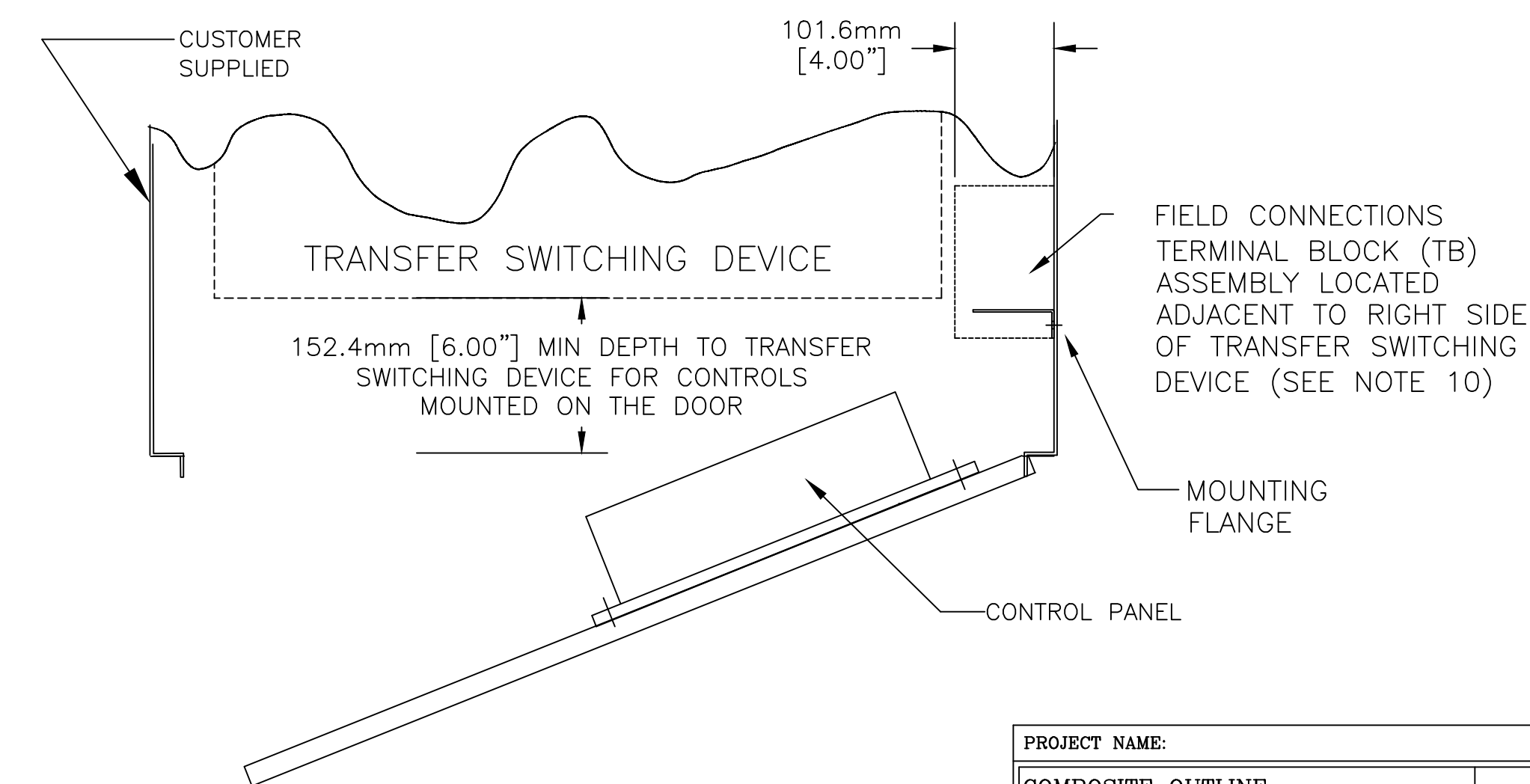
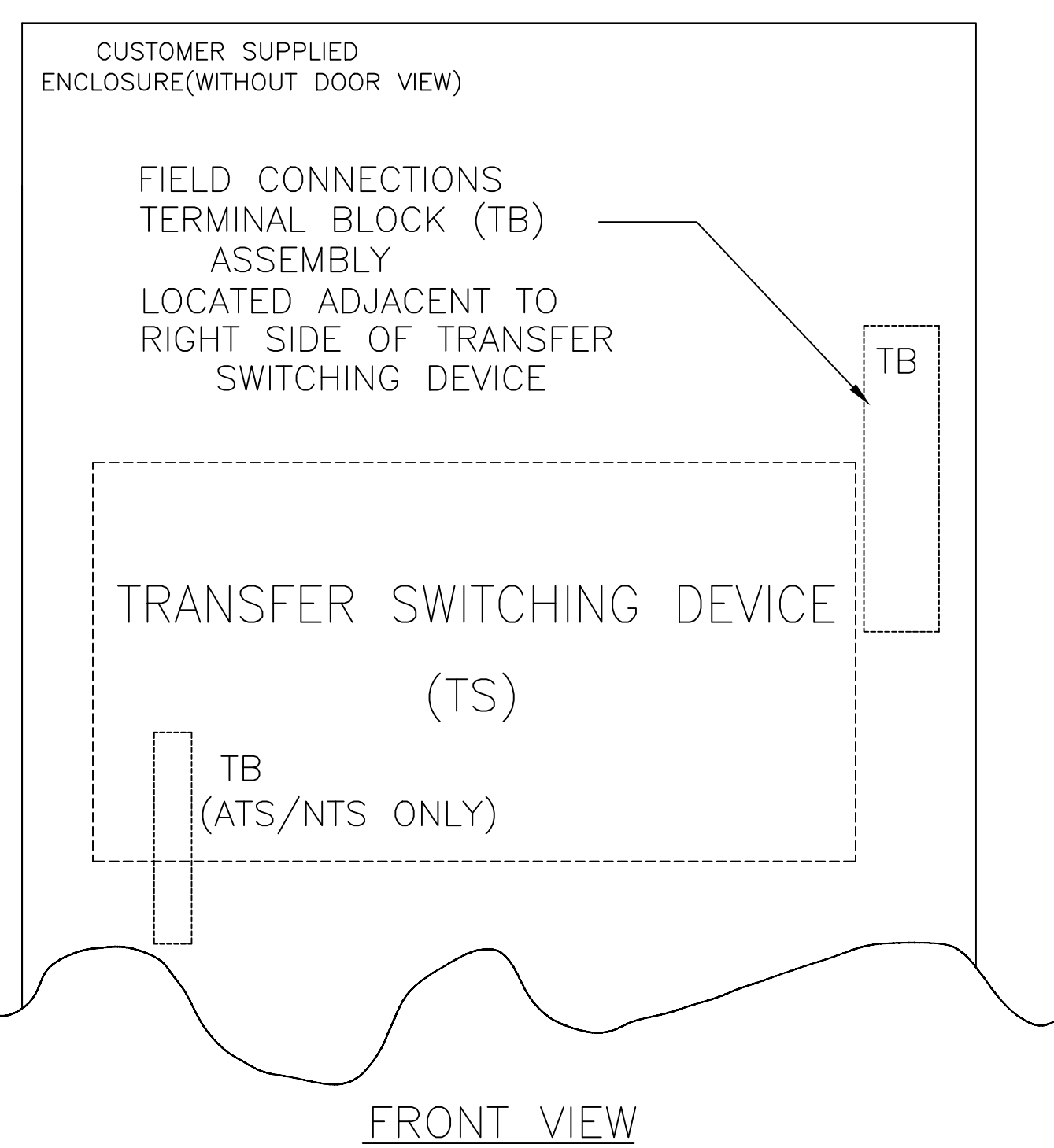
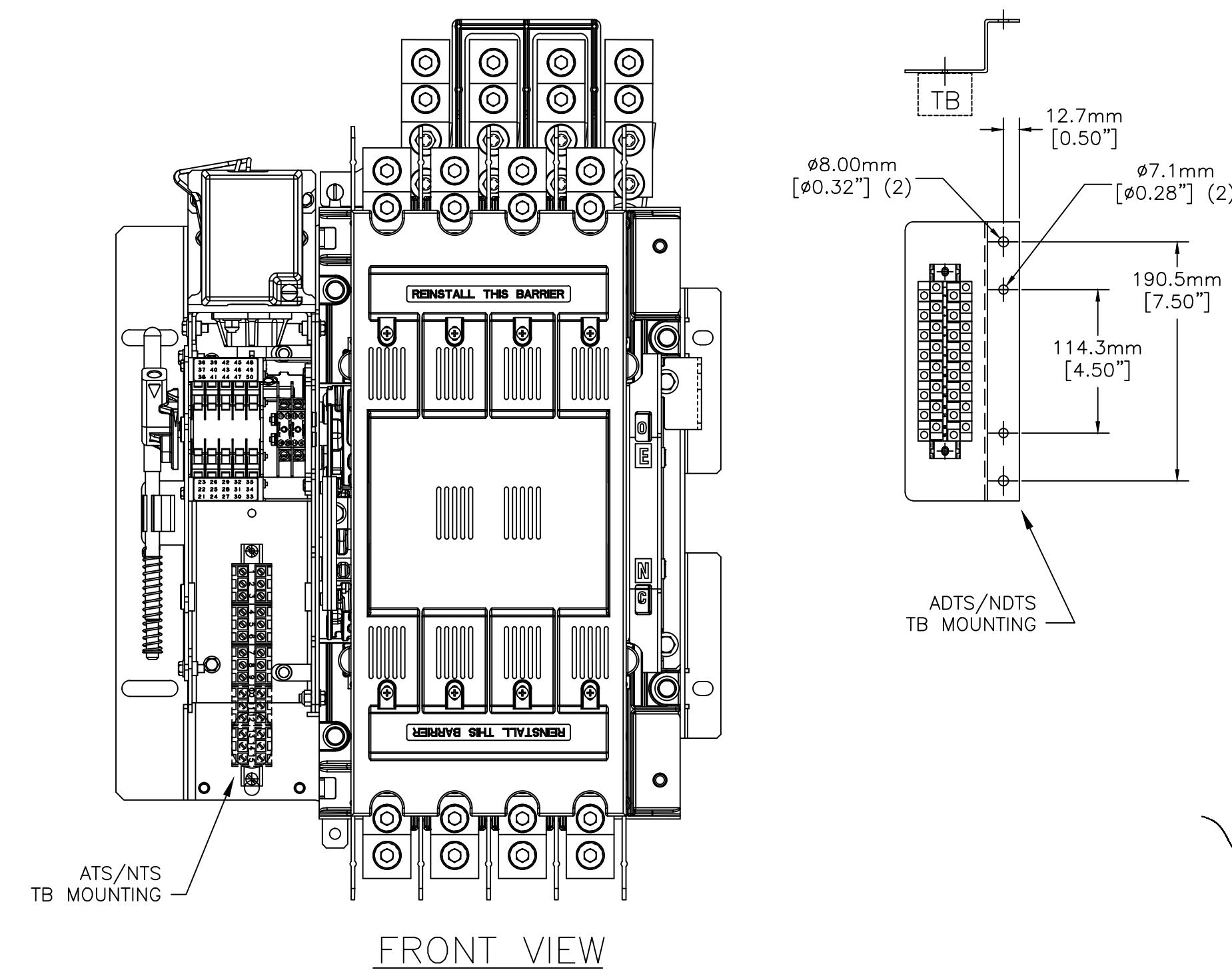
RANGE OF AL-Cu CONDUCTOR SIZES
ISO CROSS SECTION (mm²)
(USE STRANDED TYPE CONDUCTORS)

SWITCH RATING (AMPS)	CONDUCTOR SIZE RANGE	RECOMMENDED TIGHTENING TORQUE
600	TWO 35-300	42,4 Nm

MINIMUM REQUIRED ENCLOSURE SIZE mm (INCH)

SWITCH RATING (AMPS)	HEIGHT	WIDTH	DEPTH
600 AMPS	1600mm (63.00")	610mm (24.00")	432mm (17.00")

MOUNTING OF FIELD TERMINAL BLOCK ASSEMBLY (TB) (SEE NOTE 10)



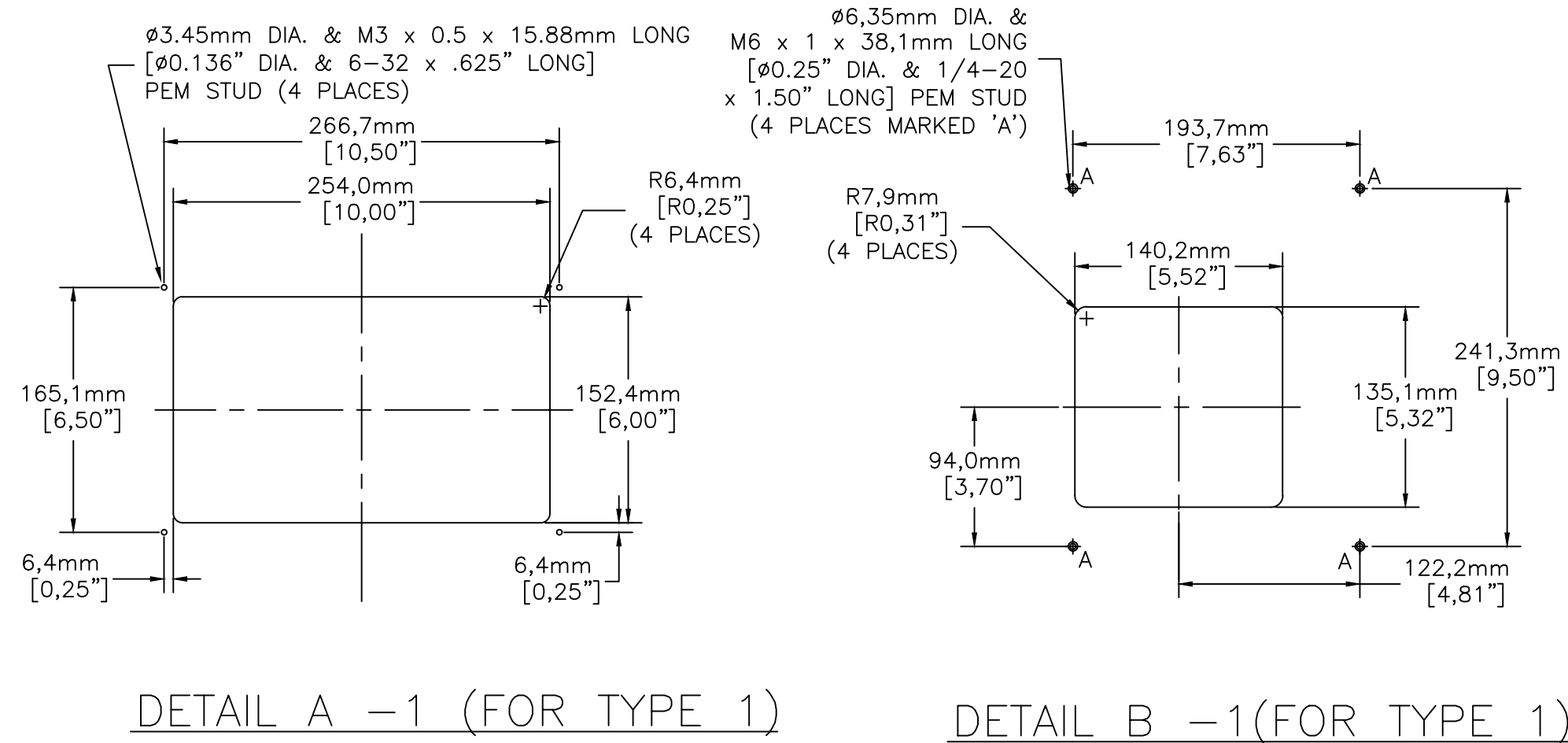
A	265710	TR	BK	03/22/17
	SEE ECN			
	254918	TR	BK	5/15/15
	ISSUE			
REV	ECN NO.	BY	APP.	DATE

PROJECT NAME:		COMPOSITE OUTLINE	
200 SERIES J2ATS/J2NTS/J2ADTS/J2NDTS 600 AMPS.		600A OPEN TYPE (ACC. 97N)	
BY	DATE	MANUFACTURING TOLERANCES TO BE IN ACCORDANCE WITH ASCO PROCEDURE MP-1-003. FOR PLASTIC PARTS SEE MP-1-005.	ASSEM. REF. NO.
TR	5/21/15	PROPERTY OF ASCO POWER TECHNOLOGIES. USE PERMITTED FOR OUR WORK ONLY. ALL RIGHTS OF DESIGN OR INVENTION ARE RESERVED.	SCALE NONE
CHECKED	BK	5/21/15	SIZE DS
PROJECT APPROVAL	BK	5/21/15	COMPUTER GENERATED DRAWING
FINAL APPROVAL			DWG. NO. 1001393-005-A
			REV. A
			ECN NO. 265710
			SHEET 2 OF 3

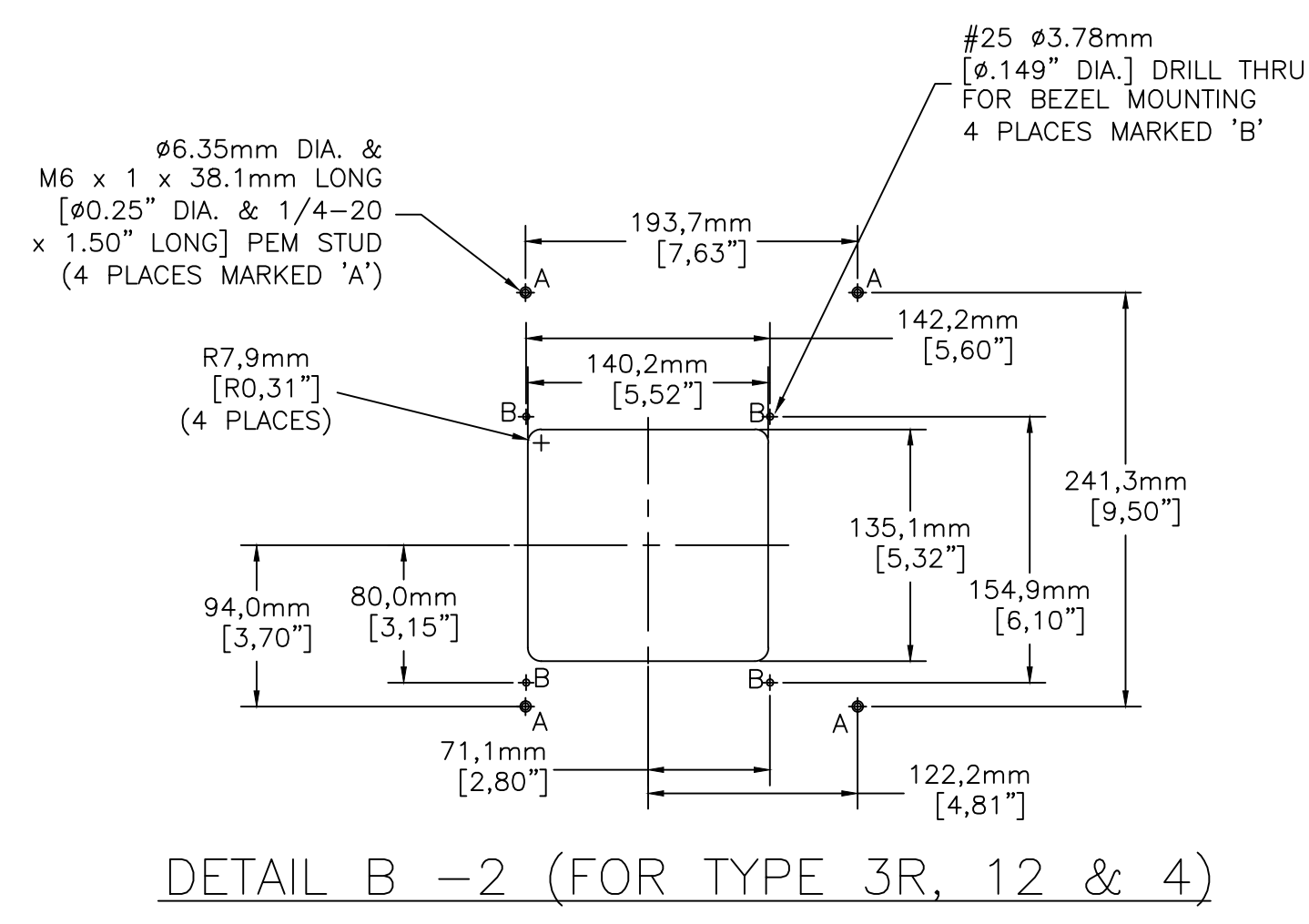
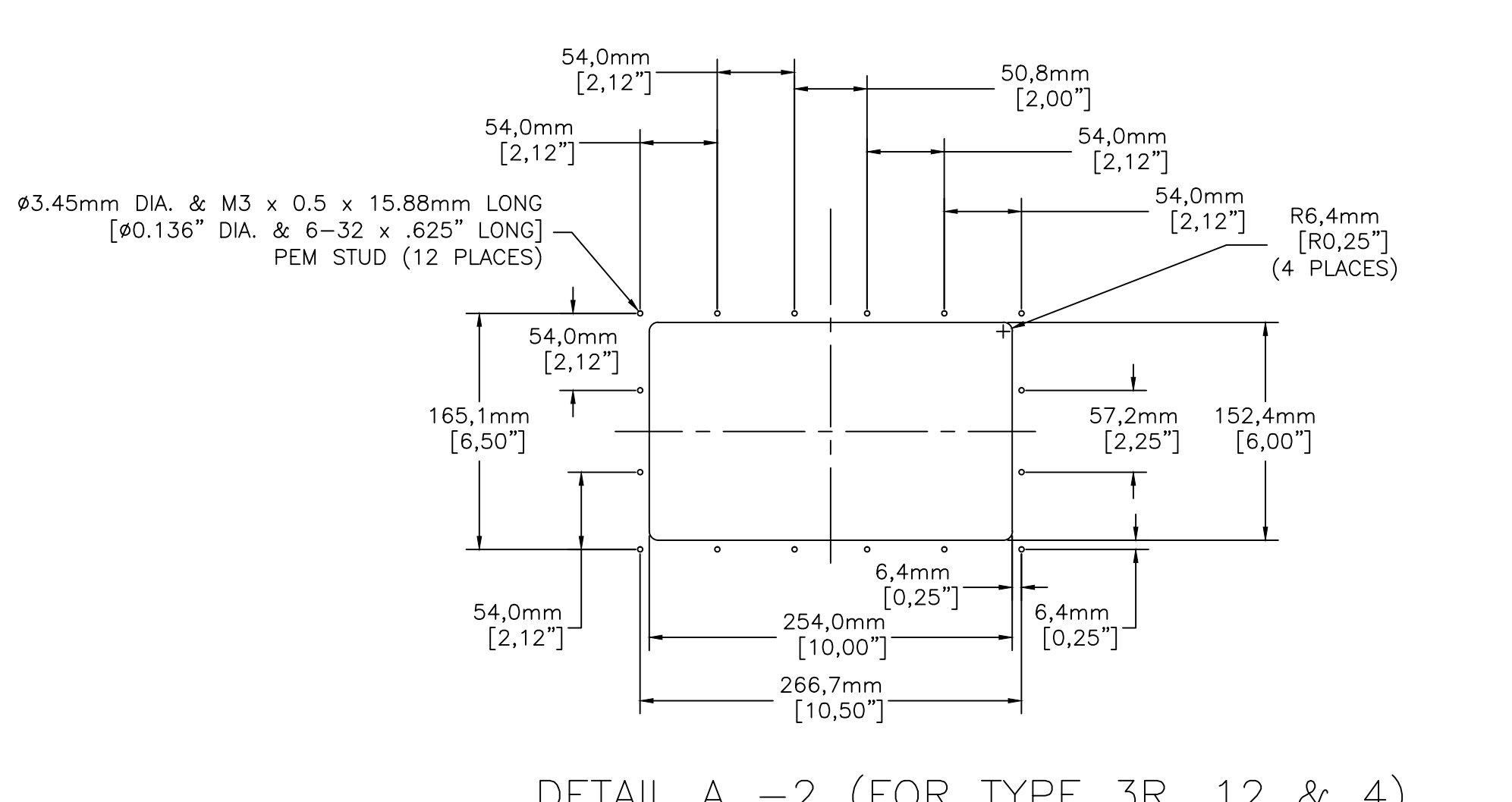
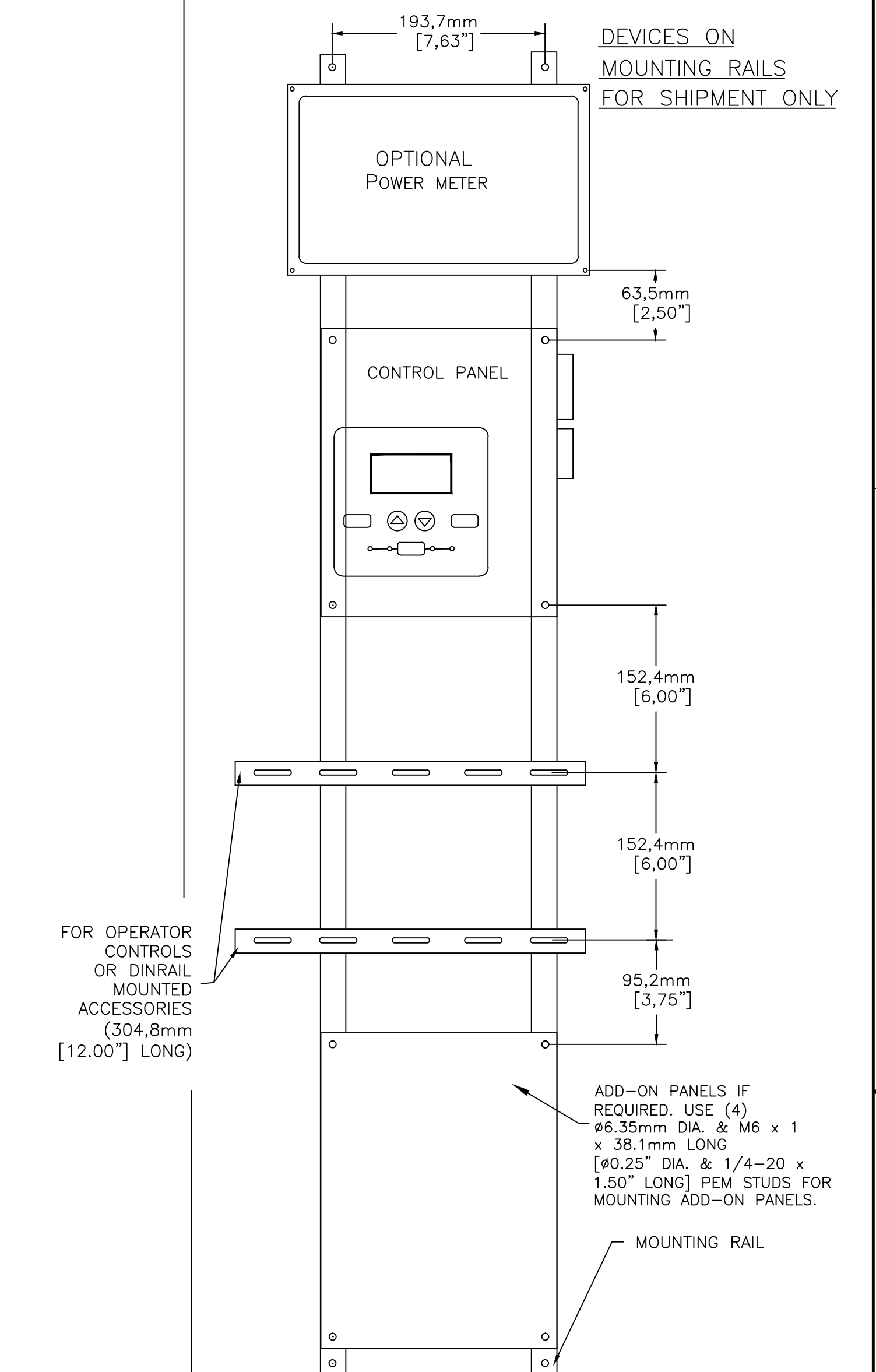
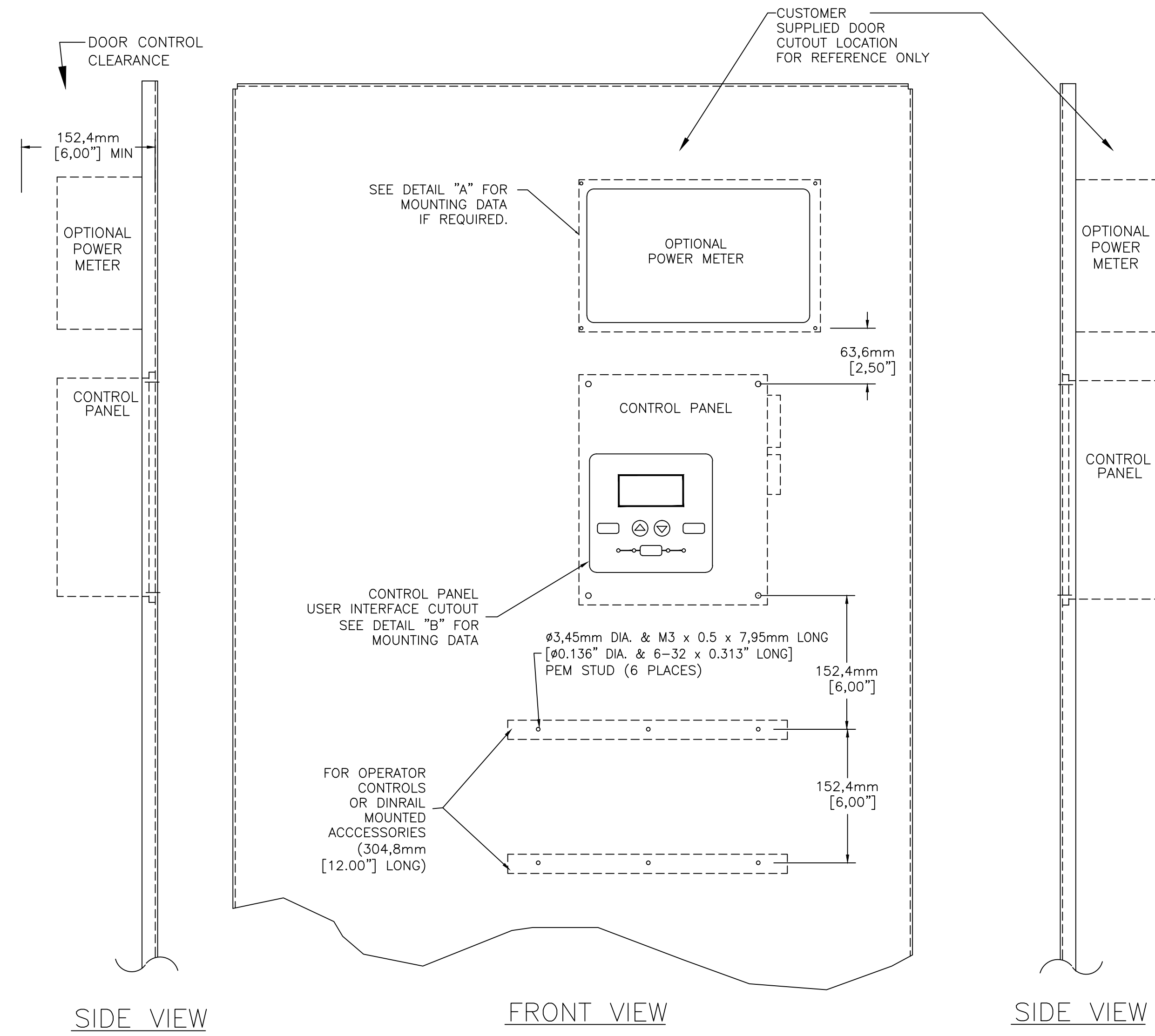
ASCO ASCO POWER TECHNOLOGIES, L.P.
FLORHAM PARK, NEW JERSEY 07932 U.S.A.

OUTLINE FOR ASCO® 200 SERIES 600 AMPERE "J" FRAME (J2ATS, J2NTS, J2ADTS, J2NDTS) FRONT CONNECTED TRANSFER SWITCHING EQUIPMENT OPEN TYPE

CONTROL PANEL & CONTROLS MOUNTING DATA



CONTROL PANEL & CONTROLS MOUNTING



A	265710	TR	BK	03/22/17
				SEE ECN
	254918	TR	BK	5/15/15
				ISSUE

PROJECT NAME:				REV. TO SHEET	ECN NO.	BY	APP.	DATE
COMPOSITE OUTLINE								
200 SERIES J2ATS/J2NTS/J2ADTS/J2NDTS 600 AMPS.								
600A OPEN TYPE (ACC. 97N)								
MANUFACTURING TOLERANCES TO BE IN ACCORDANCE WITH ASCO PROCEDURE MP-1-003. FOR PLASTIC PARTS SEE MP-1-005.				ASSEMB. REF. NO.				
PROPERTY OF ASCO POWER TECHNOLOGIES. USE PERMITTED FOR OUR WORK ONLY. ALL RIGHTS OF DESIGN OR INVENTION ARE RESERVED.				SCALE: NONE SIZE DS				
DRAWN BY TR 5/21/15				COMPUTER GENERATED DRAWING				
CHECKED BY BK 5/21/15				DWG. NO.				
PROJECT APPROVAL BY BK 5/21/15				1001393-005-A				
FINAL APPROVAL				DRAWING A				
ASCO® ASCO POWER TECHNOLOGIES, L.P. FLOHAM PARK, NEW JERSEY 07932 U.S.A.				ECN NO. 265710				
				SHEET 3 OF 3				