

Panel C-42 // 10:30 a.m.

Chiller Unit 4 not working.
Click here for details.

Panel C-42 // 10:30 a.m.

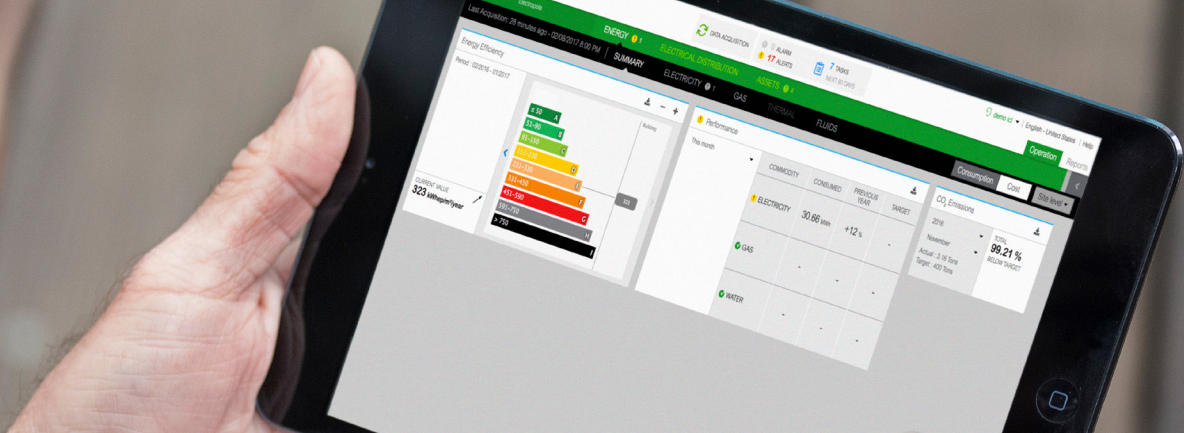
Go get 'em, buddy. 👍

Smart Panels

Embrace the future of power distribution

Contents

- > Power Distribution is Changing
- > Why Does Smart Matter?
- > Smart Panels Hardware Components
- > Smart Panels, Software, and Services
- > Summary



Power distribution is changing.

The world is getting smarter. Every day, it is becoming more decentralized, decarbonized, and digitized. And as your products become more connected, so do you. With these innovations come increased demand, new regulations, and an opportunity to improve your existing infrastructure.

That's why it's more important than ever to install equipment, software, and services that will **keep everything running smoothly in the present, and prepared for the future.**

Power Distribution is Changing
.....

Why Does Smart Matter?
.....

Smart Panels Hardware Components
.....

Smart Panels, Software, and Services
...

Summary
..

Your electrical system has something to say.

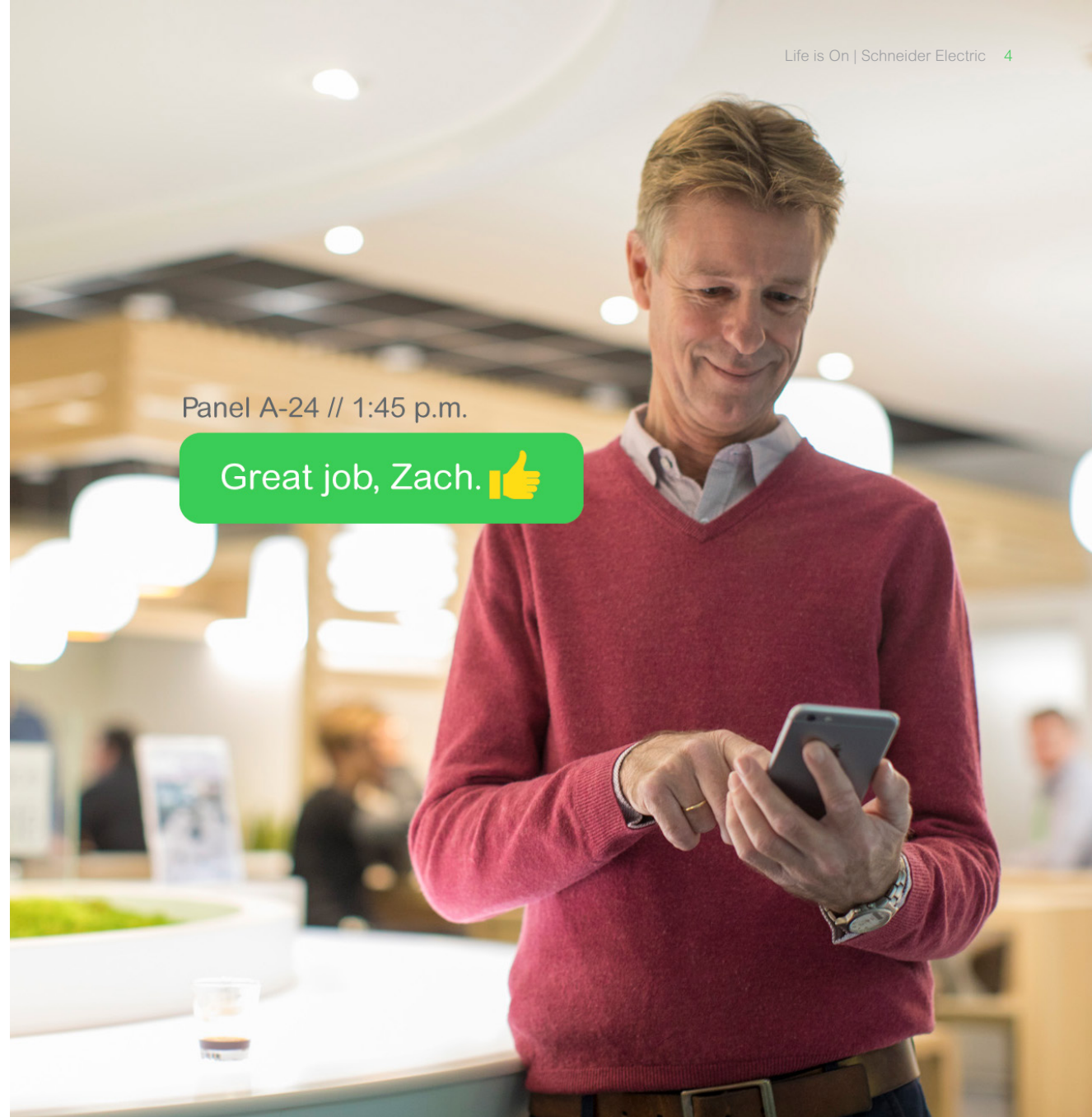
Smart Panels from Schneider Electric are a key element of the EcoStruxure™ Power architecture. By measuring usage, quality, and status of electrical power distribution, and then aggregating and communicating them over Ethernet, they make the necessary data available on site or remotely.

In doing so, they give a voice to your switchboards, providing you with key insights to manage your facilities proactively.

By combining cutting-edge hardware and software with unparalleled connectivity, Smart Panels simultaneously:

- Provide simple, interoperable functionality
- Help you discover and correct potential blind spots

As a result, your facility benefits from increased efficiency and reduced downtime.



**Power Distribution
is Changing**



Why Does
Smart Matter?



Smart Panels
Hardware Components



Smart Panels, Software,
and Services



Summary



New requirements mean new opportunities.

In today's world of increased energy usage and enhanced digitization, there are significant advantages to adopting a **more evolved and innovative approach to power distribution**, including:

With Smart Panels, you can deliver on all of these needs with simplicity and ease.

1

Compliance with more demanding standards, regulations, and codes

2

Better reliability and availability

3

Extended equipment shelf life

4

Improved efficiency

5

Increased sustainability

6

Strengthened security

Power Distribution is Changing



Why Does Smart Matter?



Smart Panels Hardware Components



Smart Panels, Software, and Services



Summary



The myriad advantages ...

of installing Ethernet-ready Smart Panels can be summed up in four words:



1. Protect

Electrical protection is at the core of Smart Panels.

Reliable, high-performance technology is present in every breaker and every residual current device to help ensure the safety of people and equipment.



2. Measure

With Smart Panels, you can collect relevant data from your entire electrical network.

This allows you to receive information in real time, so you can clearly see what needs to be done.



3. Connect

In order for data to be effective, it needs to be collected, and then distilled into actionable information.

Smart Panels allow you to act on any operational inefficiencies immediately, make any necessary adjustments, or fix issues as they arise.



4. Act

A connected solution within the EcoStruxure Power architecture, Smart Panels empower you to make informed decisions, create a proactive maintenance program, and drive overall energy efficiencies.

Why does smart matter?

At every stage of a building's life cycle, Smart Panels provide incredible innovation to improve your work:

◀ I DESIGN

▶ I BUILD

▶ I INSTALL

▶ I OPERATE



Electrical system designers and consultants who recommend solutions need to find ways to comply with safety and regulation standards, meet rising digitization demands, and stay cost effective. Smart Panels help you:

- Win more projects
- Design durable and compliant systems
- Create smart, flexible systems

[See more benefits](#)

Power Distribution
is Changing
.....

**Why Does
Smart Matter?**
.....

Smart Panels
Hardware Components
.....

Smart Panels, Software,
and Services
....

Summary
..

Why does smart matter?

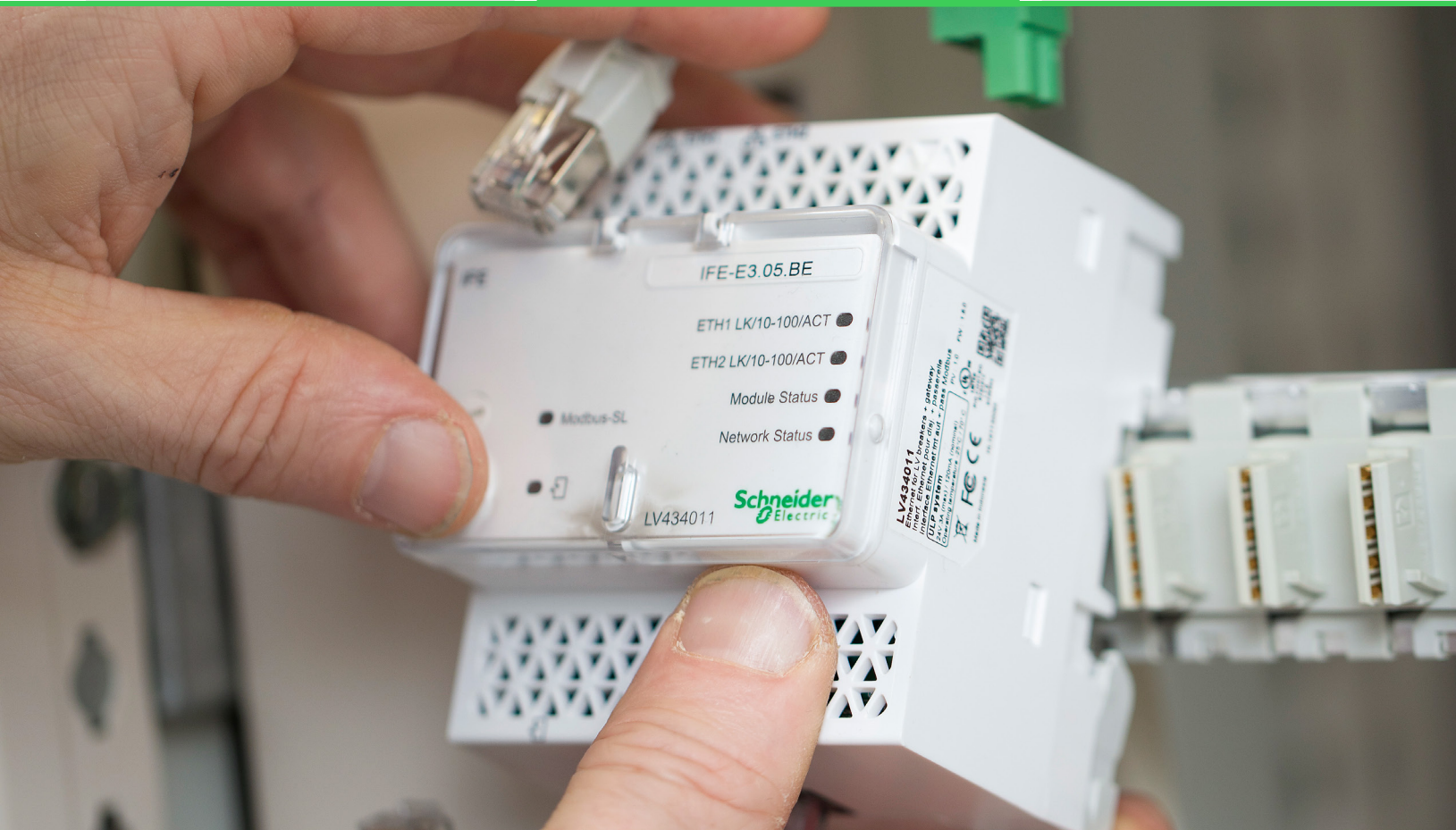
At every stage of a building's life cycle, Smart Panels provide incredible innovation to improve your work:

▶ I DESIGN

▼ I BUILD

▶ I INSTALL

▶ I OPERATE



Contractors and panel builders need to produce safe and reliable solutions that account for rising consumption, while still meeting their project budgets and timelines. Smart Panels help you:

- Retrofit easily
- Commission quickly
- Provide better service

[See more benefits](#)

Power Distribution
is Changing
.....

**Why Does
Smart Matter?**
.....

Smart Panels
Hardware Components
.....

Smart Panels, Software,
and Services
...

Summary
..

Why does smart matter?

At every stage of a building's life cycle, Smart Panels provide incredible innovation to improve your work:

▶ I DESIGN

▶ I BUILD

◀ I INSTALL

▶ I OPERATE



Contractors, installers, and system integrators that assemble and install electrical switchboards are always looking for ways to add connectivity without growing their panel's footprint. Smart Panels help you:

- Understand and implement new technologies
- Provide comprehensive product support
- Perform effective marketing and business planning

[See more benefits](#)

Power Distribution
is Changing
.....

**Why Does
Smart Matter?**
.....

Smart Panels
Hardware Components
.....

Smart Panels, Software,
and Services
.....

Summary
..

Why does smart matter?

At every stage of a building's life cycle, Smart Panels provide incredible innovation to improve your work:

▶ I DESIGN

▶ I BUILD

▶ I INSTALL

▼ I OPERATE



Building owners and facility managers often juggle rising maintenance costs with high demand for continuous, reliable power. Smart Panels help you:

- Improve reliability
- Reduce maintenance costs
- Increase efficiency

[See more benefits](#)

Power Distribution
is Changing



**Why Does
Smart Matter?**



Smart Panels
Hardware Components



Smart Panels, Software,
and Services



Summary

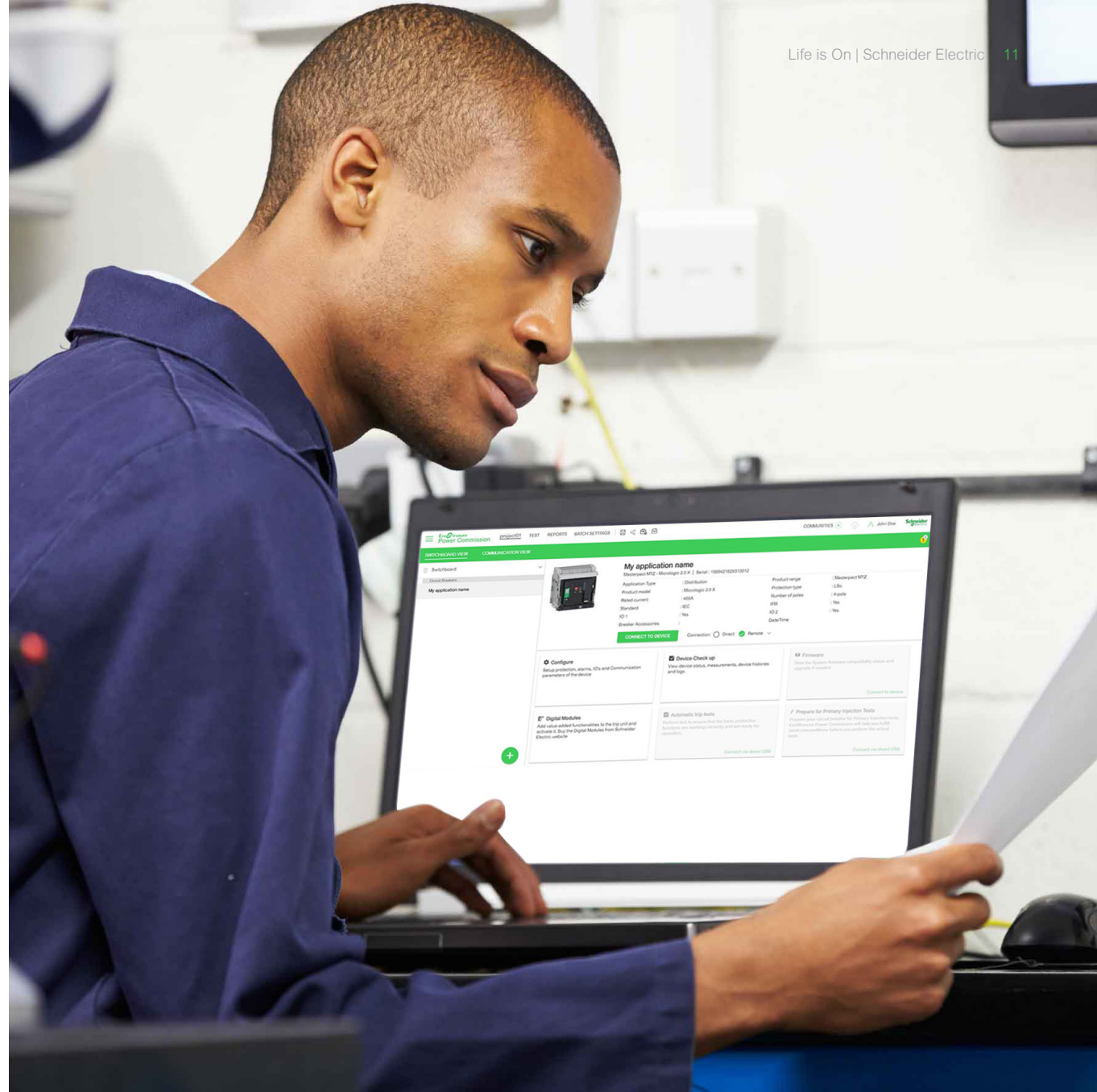


EcoStruxure Power Commission

All-in-one commissioning software for Smart Panels and smart device set up and configuration.

EcoStruxure Power Commission is an intuitive software tool that provides easy configuration, reliable testing methodologies, and integrated reporting for all smart devices connected to your switchboard — all in one program. It's the simplest way to set up, test, commission, and manage the smart devices on your switchboard.

See more benefits



Power Distribution
is Changing
.....

**Why Does
Smart Matter?**
.....

Smart Panels
Hardware Components
.....

Smart Panels, Software,
and Services
.....

Summary
.....

Get extra help from an EcoXpert.

For intelligent and sustainable solutions that help reduce risk and cost, discover the EcoXpert certification program.

EcoXperts are certified in the fields of power management, building automation, light and room control, and data connectivity. Together, EcoXperts and Schneider deliver services and solutions that exceed your expectations and build sustainable success for your facility.

[Learn more](#)



Power Distribution
is Changing



**Why Does
Smart Matter?**



Smart Panels
Hardware Components



Smart Panels, Software,
and Services



Summary



Design your Smart Panels.

Schneider Electric allows you to design to your exact specifications. Select your preferred components, and create the Smart Panels solution that works for your building or facility.

Power Distribution
is Changing
.....

Why Does
Smart Matter?
.....

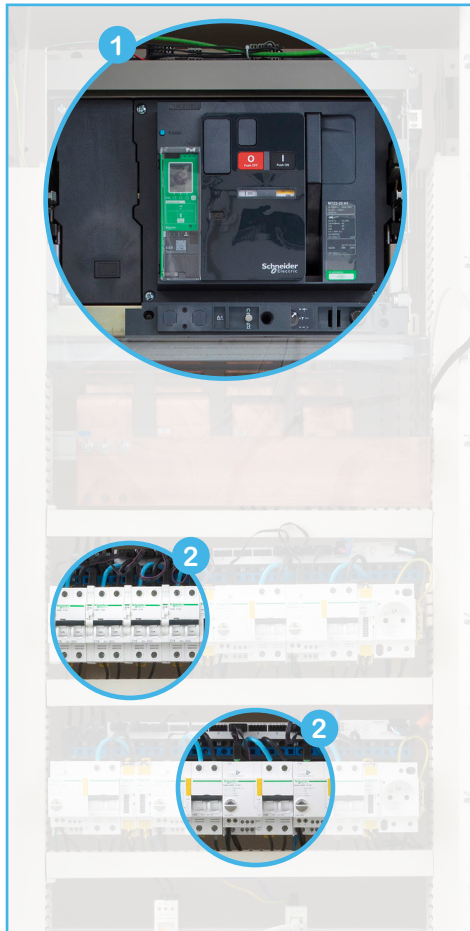
**Smart Panels
Hardware Components**
.....

Smart Panels, Software,
and Services
...

Summary
..

Protect:

Electrical protection safeguards circuit elements, people, and equipment from the destructive or dangerous consequences of excessive (short-circuit) currents, or those due to overloading and insulation failure. Smart Panels provide the information needed to analyze the event and restore power.



1

MasterPact, Compact, circuit breakers and switches

In addition to protection, these circuit breakers also provide energy consumption data, equipment status, and operational support information.



2

Acti 9 circuit breakers, residual current devices, surge arresters, contactors, and impulse relays

Each Acti 9™ device contributes to electrical supply reliability. Auxiliaries transmit real-time status to the Enerlin'X™ system, and additional modules enable resetting after a trip.



Learn more about our Smart Panels protection solutions

Power Distribution
is Changing



Why Does
Smart Matter?



Smart Panels
Hardware Components



Smart Panels, Software,
and Services

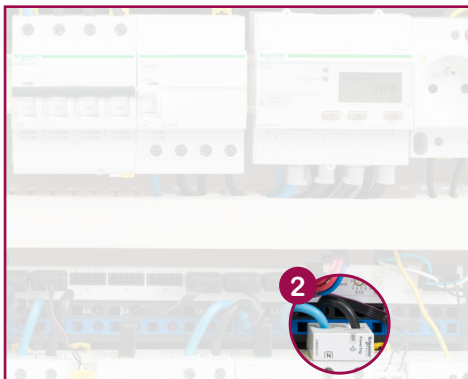
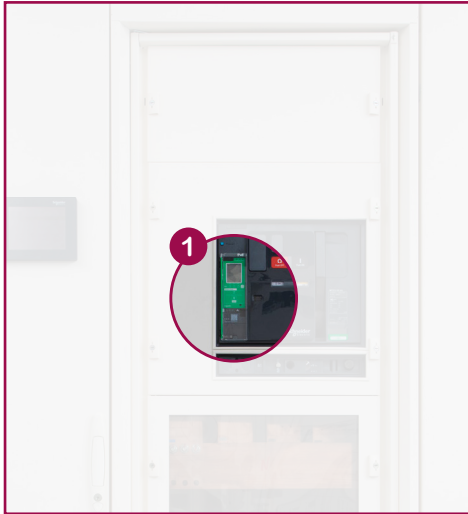


Summary



Measure:

Electrical metering provides users with the data needed to achieve energy efficiency and system reliability. Smart Panels provide this data both locally and remotely, with class one accuracy or better.



Embedded

If you need an easy-to-install meter that meets basic state-of-the-art accuracy with standards compliance, our embedded meters are the ideal choice.

1 MicroLogic trip units

MicroLogic™ trip units not only provide outstanding protection but have integrated measurement capabilities to help you monitor power conditions and manage energy consumption in real time.

MicroLogic trip units make it easy to upgrade your system, with downloadable digital modules available 24/7 from Schneider Electric's GoDigital web store.



2 PowerTag wireless energy sensor

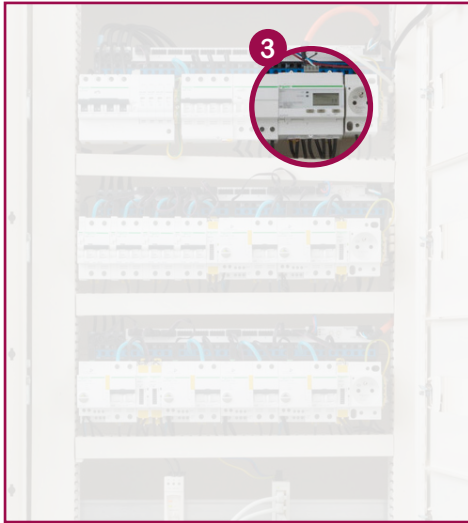
PowerTag measures real-time energy and power while monitoring protection assets. Just 'tag' circuit breakers anytime, anywhere, and stay fully connected to vital assets that make businesses run smoothly.



Learn more about our Smart Panels metering solutions

Measure:

Electrical metering provides users with the data needed to achieve energy efficiency and system reliability. Smart Panels provide this data both locally and remotely, with class one accuracy or better.



Standalone

For advanced power quality monitoring or revenue metering of key distribution points, our standalone meters offer the highest configurability and programmability available.

3 Acti 9 energy meters

Acti 9 energy meters natively support a variety of protocols (Modbus, LON, M-bus, BACnet), seamlessly integrating into existing networks to bring simple energy management applications to any building.

4 PowerLogic meters

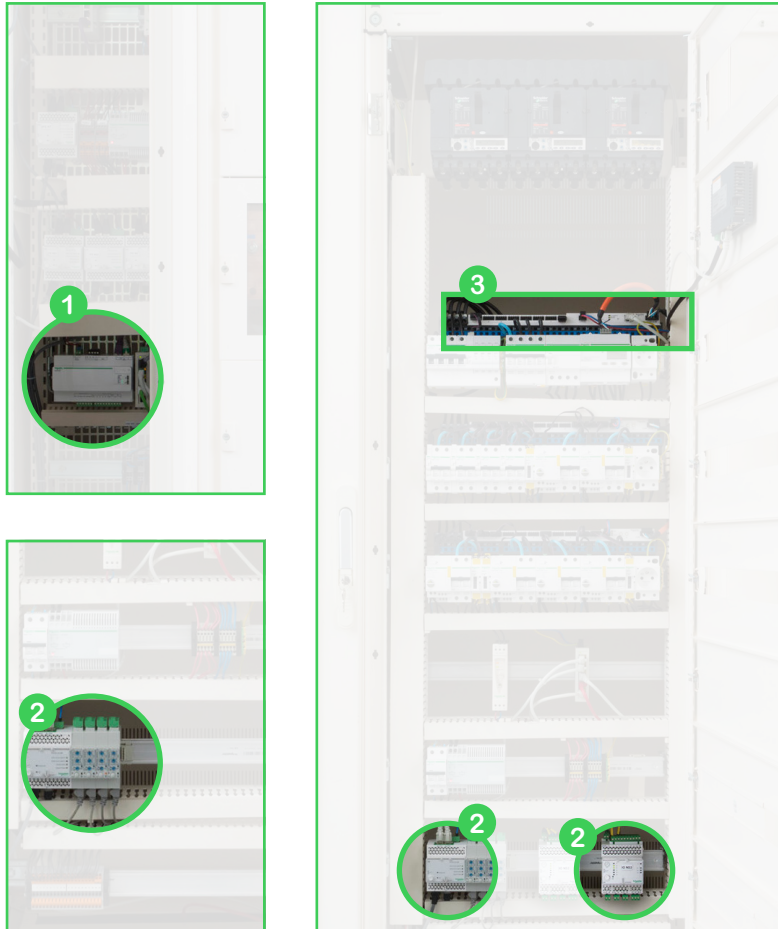
PowerLogic™ power meters help optimize network efficiency and reliability by tracking real-time energy and power quality, monitoring equipment status, trending loads, and logging events and alarms.



[Learn more about our Smart Panels metering solutions](#)

Connect:

Digitization demands that every component in the electrical installation be able to communicate with higher platforms like software and analytics. With Smart Panels, your system is open and compatible with all other components.



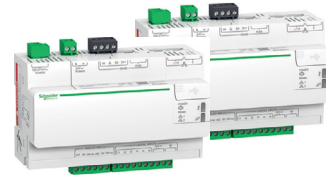
Connect with Enerlin'X

Enerlin'X components collect data from system components and circuit breakers across your building, and aggregate it to local displays and web portals. This allows you to easily read and evaluate your data, and figure out next steps. These components feature:

- Grouping of similar functions in smart components (e.g. Acti 9 Smartlink)
- Simplified, fast connection/disconnection
- Space savings in the enclosure

1

Com'X data loggers
and energy servers



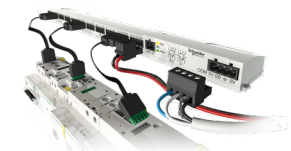
2

Link 150, IFM, IFE,
and IO interfaces
and gateways



3

Acti 9 Smartlink



Learn more about our Smart Panels connectivity solutions

Power Distribution
is Changing



Why Does
Smart Matter?



**Smart Panels
Hardware Components**



Smart Panels, Software,
and Services



Summary



Act:

Make informed decisions. Smart Panels embedded web pages display real-time data in a meaningful way. Have a standard web browser? Easily access and analyze trend history — all this data is at your fingertips.

Collect energy data throughout the building or facility, from:

- Electrical distribution devices
- Water, air, gas, electricity, or steam metering devices (WAGES)
- Temperature and environmental sensors

Deliver data to enable:

- Smart displays: dashboards and historical graph charts
- Advanced processing by EcoStruxure solutions

Provide benefits such as:

- Data collection
- Data publishing
- Quick setup and configuration

Allow you to identify opportunities for savings, by:

- Providing dashboards and historical trend charts
- Connecting to a network via Wi-Fi or Ethernet
- Detecting load unbalance and breaker status



Scalable software and services.

Enjoy on-site or remote monitoring that's scalable to your demands with software options adaptable to your needs.

Power Distribution
is Changing
.....

Why Does
Smart Matter?
.....

Smart Panels
Hardware Components
.....

**Smart Panels, Software,
and Services**
...

Summary
..

Edge control software

Make informed, data-driven decisions.

Track equipment and maintenance activity to reduce downtime, energy use, and maintenance costs while improving site planning and revealing additional capacity.

- Increase power availability
- Help protect people and equipment
- Improve operational efficiency



EcoStruxure Facility Expert



EcoStruxure Power Monitoring Expert



EcoStruxure Power SCADA Operation



Apps, analytics, and services

Maximize the value of data.

Receive expert analysis and recommendations that help.

- Optimize energy efficiency and reduce energy-related costs
- Reduce downtime from network issues or equipment failure
- Improve predictive maintenance scheduling and reduce reactive maintenance emergencies



EcoStruxure Facility Advisor



EcoStruxure Power Advisor



EcoStruxure Resource Advisor



EcoStruxure Asset Advisor



Power Distribution is Changing



Why Does Smart Matter?



Smart Panels Hardware Components



Smart Panels, Software, and Services Summary



Read about Smart Panels in action.

Hospitality

With over 130,000 rooms in more than 1,000 properties spanning 59 countries, a major hotel chain had to optimize consumption, while still helping to ensure safety and comfort.

With Smart Panels, they identified the most profound inefficiencies, which led to corrections that saved them money, and improved guest comfort.

[Learn more](#)

Power Distribution
is Changing



Why Does
Smart Matter?



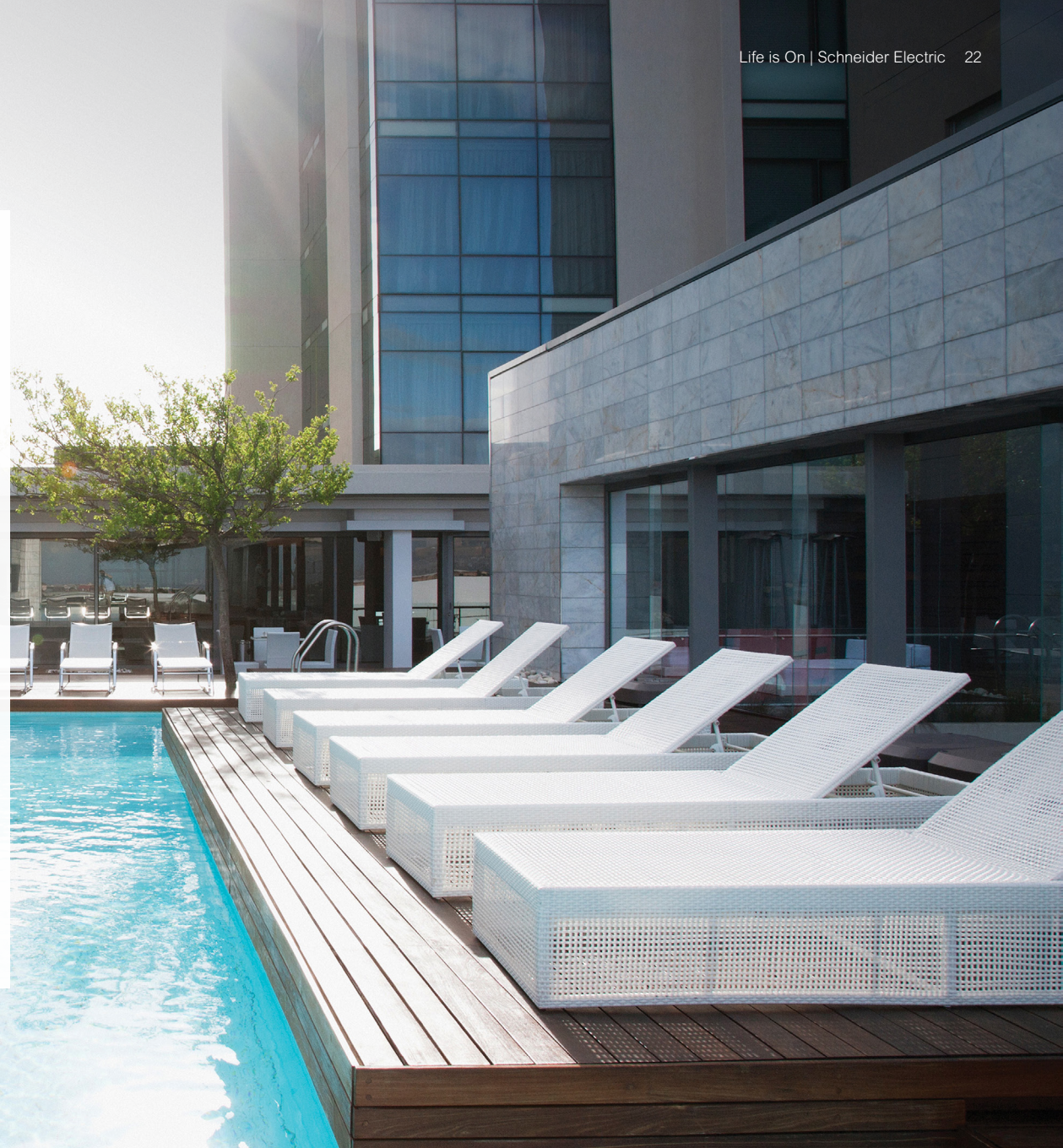
Smart Panels
Hardware Components



Smart Panels, Software,
and Services



Summary



The world is getting smarter.

As power distribution continues to evolve, and products become more connected, it's important for your buildings and facilities to keep up with the pace. In making the transition to Smart Panels, you will be equipped to thrive by:

- Making your facility more efficient
- Connecting your critical equipment
- Modernizing your business with the latest trends
- Acquiring the latest energy data in real time
- Recognizing trends and behaviors
- Improving performance while simultaneously reducing costs

The world is indeed getting smarter, and by installing Smart Panels by Schneider Electric, your buildings and facilities can be a part of the conversation.



Power Distribution
is Changing



Why Does
Smart Matter?



Smart Panels
Hardware Components



Smart Panels, Software,
and Services



Summary



Learn more



Discover EcoStruxure



Learn more about EcoStruxure Power.



See how EcoStruxure Power and Nemours Children's Hospital ensure reliable power for patients.



Contact us to start your journey.

schneider-electric.com/smart-panels

This document presents general, non-binding information regarding the potential value that digitized power distribution products and solutions can bring to the user. Due to varying user situations and goals, Schneider Electric does not warranty or guarantee that the same or similar results represented in this document can be achieved. Please refer to Schneider Electric product and solution catalogs for actual specifications and performance.



©2019 Schneider Electric. All Rights Reserved. Schneider Electric | Life Is On, Acti 9, EcoStruxure, EcoXpert, Enerlin'X, MasterPact, MicroLogic, and PowerLogic are trademarks and the property of Schneider Electric SE, its subsidiaries, and affiliated companies. All other trademarks are the property of their respective owners. iOS is a trademark or registered trademark of Cisco in the U.S. and other countries and is used under license.

Life Is On

