



Drives start-up

Reduce risk and time to deploy your new installations

Start-up service

Who can start-up your Schneider Electric™ equipment better than our Schneider Electric experts? An efficient control system begins with a successful start-up, so no business can afford installation start-up delays. That is why Schneider Electric provides you the support you need to accomplish this key step with minimum time and effort.

Our dedicated start-up service helps you to achieve the full value of your automation investment. We can help you choose the right technologies for your project, aid in design, as well as train your staff on programming, maintenance, and user procedures. Lower your time to market and have your automation systems up and running quickly.

Key Benefits - Reduce time and risk

Minimize start-up time.

Lower risk of equipment downtime.

Help ensure that equipment performs to design.

Reduce life cycle costs with installation that complies with Schneider Electric requirements.

Help prevent warranty issues.

se.com/vfd-services

Life Is On

Schneider
Electric

Why choose start-up support?

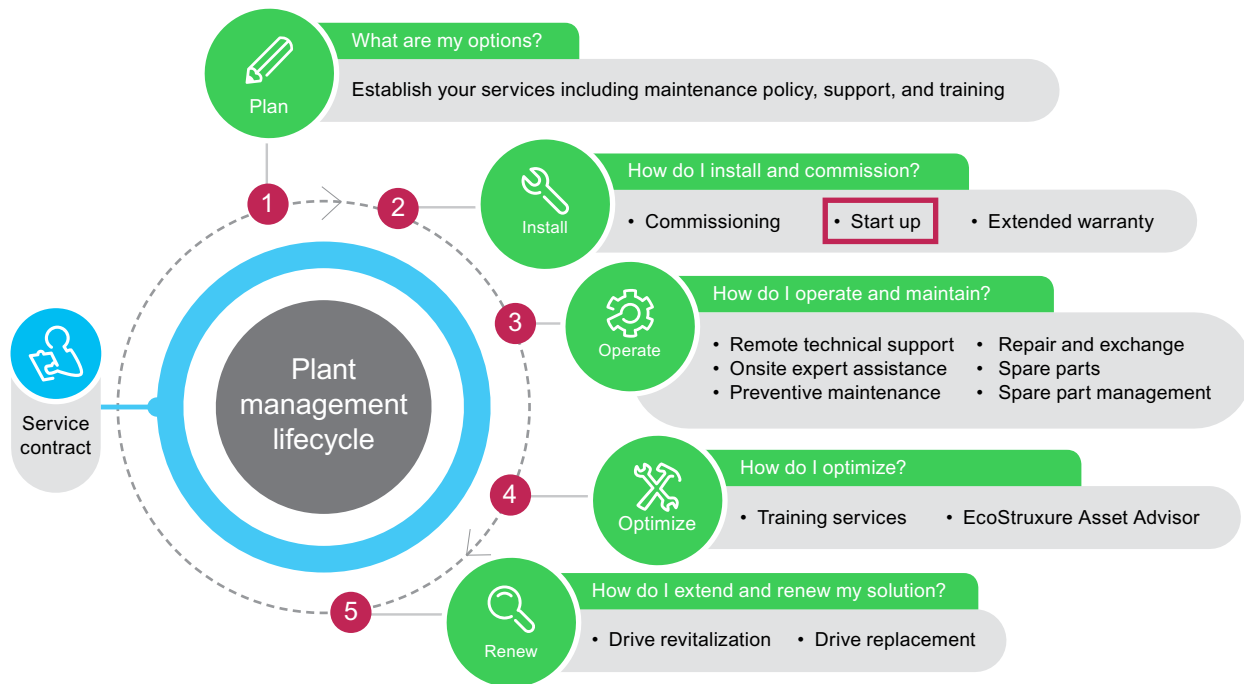
The Schneider Electric service teams are expertly prepared to provide assistance in the installation and start-up of your new drive, helping ensure that the equipment is setup correctly and is fully tested before running. Furthermore, you will receive a detailed report, signed off by a Schneider Electric engineer, giving you peace of mind that your equipment is set up correctly, and fully covered by our warranty.

Type of start-up

Name	Product range	Covered in the service	Commercial reference
Remote*	Up to 75Kw	<ul style="list-style-type: none"> Remote online support through certified remote connection software. Menu 'Simply Start' setup_ Motor Name plate, Nominal Motor Frequency, Nominal Motor Power, Command and Reference, Auto-Tuning. 	SRVSTRUPVSDREM
Advanced	Up to 75KW	<ul style="list-style-type: none"> On premise support with previously scheduled appointment. Menu 'Simply Start' setup_ Motor Name plate, Nominal Motor Frequency, Nominal Motor Power, Command and Reference, Auto-Tuning. General Functions: PID, Speed limits, Ramp, Stop configuration, PID controller, Torque limitation, Present Speed, Communication settings (IP config), Input and Output setting. 	SRVSTRUPVSDADV
Expert	90kW and over	<ul style="list-style-type: none"> On premise support with Advanced tasks above included, plus: Inspection of electrical installation and option device (Input and Output filters, Breaking Systems, Regen unit, Cooling system, I/O terminal, APM assembly and registration). Electrical Measurements (Input voltage, Output voltage, DC bus link and ground connection). 	SRVSTRUPVSDEXP

*subject to local availability

Schneider Electric Plant management lifecycle



se.com/vfd-services

Life Is On

Schneider
Electric

Schneider Electric Industries SAS
35, rue Joseph Monier - CS 30323
F92506 Rueil-Malmaison Cedex