

Magelis GK Advanced Panels

Graphic terminals with keypad
and touchscreen display

The robust and ultra-flexible HMI for your
industrial operations

Magelis™ HMI GK graphic terminals share technical characteristics with Magelis GTO to enhance the operator's experience. Ultra-flexible, with two screen sizes (5"7 and 10"4), the Magelis HMI GK can be configured and controlled to precisely match your requirements.

Designed to operate in severe environments, the Magelis HMI GK offers you optimum control on the keypad, as well as on the touch screen. The latest design is consistent with the Magelis USB keypad (HMIZKB1), ideal for keypad control on small Magelis panels.



Vijeo
Designer

Vijeo Designer

Thanks to its advanced ergonomics, the single configuration software for the Schneider Electric™ HMI range ensures that operator-dialog projects can be processed quickly and easily, offering you a complete set of application management tools.

Our latest software offer, Vijeo™ Air/Air+, is fully compatible with the Magelis HMI GK and enables remote access and connectivity anytime, anywhere.



Vijeo Air Vijeo Air+

schneider-electric.com/hmi

Life Is On

Schneider
Electric

Dedicated to severe environments



Easy operation

In difficult, dusty, or dirty conditions, when the touch screen can't be used, positive keypad action means you can still operate the terminal — even while wearing gloves.

Optimum security for operators

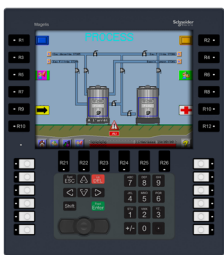
The keypad is designed with safety in mind, ensuring operators can access the command keys at any time with possible dual actions and lock keys during dangerous phases.



Ultra-flexible user interface

Touch screen and keypad keys are configurable simultaneously or separately:

- Industrial pointer to execute precise commands onscreen
- Alphanumeric keypad using mobile phone keypad principle
- 3-color LEDs associated with function keys to signal command status
- Improved key sensitivity for visual machine control



Easy maintenance

The Magelis HMI GK has enhanced features that enable easy maintenance, saving time and money, including:

- Long-life LED backlight with low consumption that requires fewer replacements
- Highly robust with operating temperatures up to 55 °C, lowering maintenance risk and time
- An SD card slot included in the device means that a PC is not required in the field to upgrade the application; just use a standard SD media card
- The removable battery is simple to replace
- Easy installation using our tool-free mounting with spring clips
- Remote diagnostics with Vijeo Air/Air+ apps means maintenance staff no longer need to be on-site to identify issues

Easy Substitution

Replacement of old Magelis XBT F or XBTGK keypads

- Identical screen size and communication capacity
- Same cut-out and keypad layout
- Use of spring clips
- Same configuration software with Vijeo Designer



Magelis GK selection guide

	5"7	10"4
	HMIGK2310	HMIGK5310
Screen		
Resolution	QVGA 320x240	VGA 640x480
Screen equipment	Color/TFT	Color/TFT
No. of colors	65,536	65,536
Brightness	16 levels	16 levels
Backlight	LED 50000 hours	LED 50000 hours
Touch pad	Analog	Analog
Memory		
Memory card/SD	Yes	Yes
Interface		
COM 1 (Sub-D9) RS232	Yes	Yes
COM 2 (RJ45) RS485	Yes	Yes
Fast Ethernet (RJ45)	Yes	Yes
USB type A port	1	1
USB type mini B port	1	1
Keys		
Dynamic keys (with LED)	14	18
Static keys (with LED)	10	12
Service keys	8	8
Alphanumeric keys	12	12
Industrial pointer	Yes	Yes
Mechanical and electrical characteristics		
Power supply	24 VDC	24 VDC
Dimensions	265 x 220 x 60 mm	332 x 296 x 73 mm



Life Is On



Schneider Electric

35 rue Joseph Monier
92500 Rueil Malmaison — France
Phone: +33 (0) 1 41 29 70 00

schneider-electric.com

August 2016

©2016 Schneider Electric. All Rights Reserved.
Schneider Electric | Life Is On is a trademark and the property of Schneider Electric SE, its subsidiaries, and affiliated companies.
998-19769256_GMA-US

This document has been
printed on recycled paper

