

Life Is On

SQUARE D™

by Schneider Electric

UL67

Service Entrance Barriers

Residential and Commercial
Panelboard Applications



schneider-electric.us/UL67

UL 67 - Know the Standard

Service entrance equipment changes for enhanced safety.

UL 67 Section 5.4 Service Entrance Equipment

According to the Occupational Safety and Health Association (OSHA.gov) there are more than 92 work-related deaths per week. A little over 8 percent of those being caused by electrocution, most of which occur by inadvertent contact with energized objects.

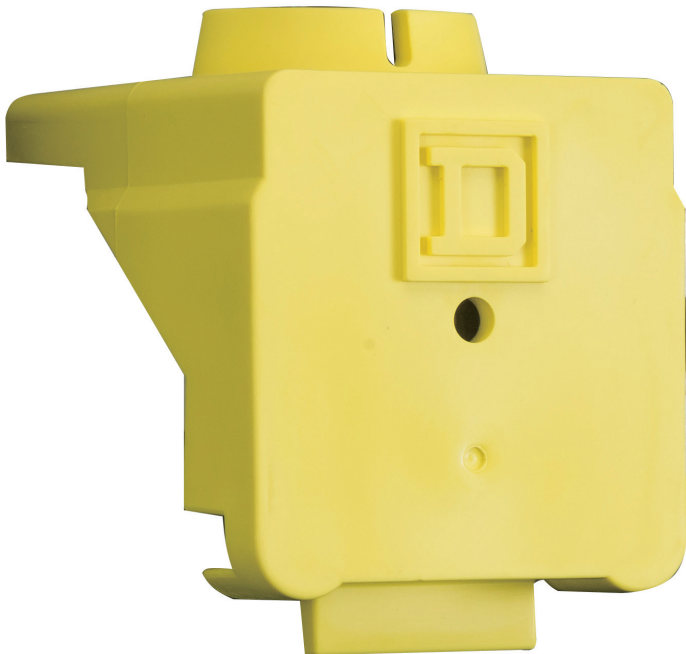
The UL67 standard has been updated for the purpose of enhancing safety in electrical distribution panels. The revision, which takes effect January 1, 2017, requires panel manufacturers to provide protective devices that guard against inadvertent contact with exposed energized parts. All manufacturers must comply with the UL changes, but the methods they use will vary. The new requirement also appears in the 2017 National Electrical Code® (NEC), with timing subject to state-specific adoption.

The change applies any time a panel is being used as service entrance equipment, whether it's a main breaker load center, panelboard or combination service entrance device (CSED) application. Even with the barrier in place, the panel must still be de-energized before removing the deadfront, but the new requirement guards against inadvertent contact with any exposed line side parts that would still be energized unless the upstream meter is pulled.



UL67 5.4.2

“Panelboards including a single service disconnect shall be constructed such that with the service disconnect in the off position, no ungrounded uninsulated live part is exposed to inadvertent contact by persons while servicing any load terminal, including a neutral load terminal, a branch circuit equipment grounding terminal, or the neutral disconnect link.”



Easy to Select and Install

The Square D Solution

Square D offers compliant barrier solutions for Square D Schneider Electric brand load centers, panelboards, and CSEDs.

The required barrier kits now come standard with every service entrance intended panel we manufacture, but can also be ordered separately for replacement, convertible main applications, or for upgrading a panel that was installed before the new code requirement was put in place.

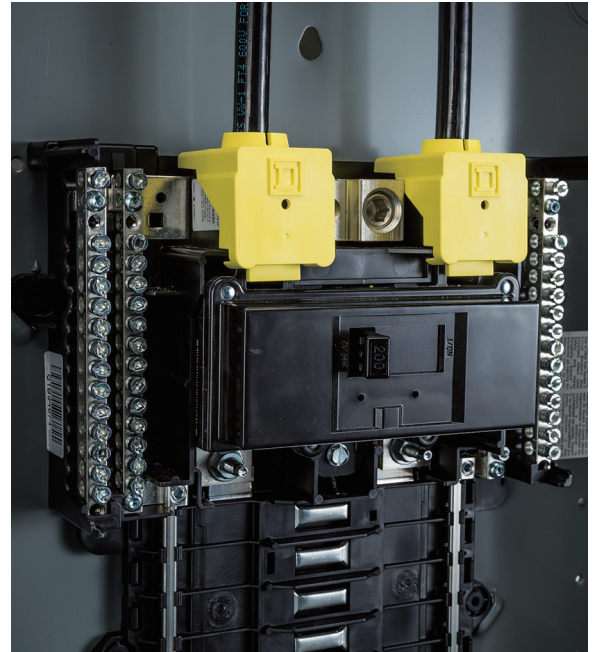
Kits can be ordered from any Square D distributor. See online Digest for easy selection.

Easy to Install

Through the design phase, we asked numerous electrical contractors from various regions of the US to spend some time with our barrier prototypes. We asked for their feedback on the proposed design for form, fit, ease of installation, and preferences. All agreed that the final product is "simple and intuitive," and many of them have said they appreciate the fact that no tools are required for installation.

The Square D™ barrier solutions have been fully tested and certified with UL, and availability will coincide with the January 1, 2017 effective date for manufacturing new compliant products.

One of the key benefits of the Square D solution is that it can be installed easily over cables and lugs without disconnecting them, which is a very important feature for ongoing safety.



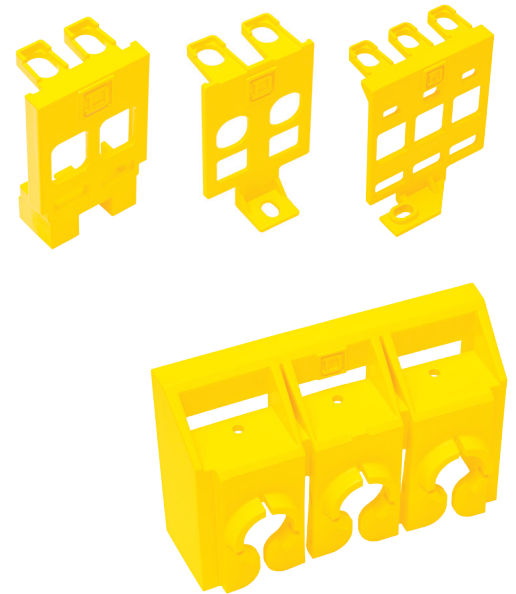
The Square D solution can be installed easily over cables and lugs without disconnecting them

The Benefits of UL67 Compliance.

- Enhanced safety and peace of mind for contractors
- Simple, intuitive installation for a quick install with no tools required (convertible main LCs)
- Retrofittable to most existing load centers – can be applied to previous installs, upgrades, and existing inventory (convertible main LCs)
- Barriers can be easily installed after conductors are terminated so as not to impact common practice (convertible main LCs)
- One solution can be used across QO/HOM high amp load centers, and one across QO/HOM low amp load centers to reduce the total number of components
- Robust material to ensure a reliable fit and function
- CSED barriers come factory installed to minimize any impact to contractor installation or confusion
- Complies with updated UL67 requirements per manufacturing date of January 1, 2017



Barriers clip easily into place with no tools required.



Barriers come in a variety of shapes and sizes to accommodate all Square D panels.

Catalog Numbers

	Description	Catalog Number
	QO / Homeline™ 1Ø 100 - 125A QOM1 convertible main load centers	PKSB1LA
	QO / Homeline 1Ø 150 - 225A QOM2 convertible main load centers	PKSB1HA
Service Entrance Barriers	QO 3Ø convertible main load centers	PKSB3
	QO 1Ø back-fed main breaker applications	PKSB1QOBF
	Homeline back-fed main breaker applications	PKSB1HOMBF
	QO 3Ø back-fed main breaker applications	PKSB3BF

Schneider Electric USA, Inc.

Schneider Electric
800 Federal Street
Andover, MA 01810

Phone: 1-888-SQUARE D (778-2733)

schneider-electric.us/UL67

December 2016
Document Number 1100BR1601

© 2016 Schneider Electric. All Rights Reserved. Schneider Electric, Homeline, Life Is On Schneider Electric, QO and Square D are trademarks and the property of Schneider Electric SE, its subsidiaries and affiliated companies. All other trademarks are the property of their respective owners.

Life Is On

SQUARE D™

by Schneider Electric

This document has been printed on recycled paper

