



Application
for Solution

Life Is On

Collaborative Automation by

Schneider
Electric

R. STAHL Schaltgeraete GmbH

Schneider Electric Collaborative Automation Partner Program

- Leading global expert for hazardous area applications
- Profound expertise in fieldbus, Profibus®, and Ethernet applications for hazardous areas
- Professional consultation for hazardous area projects from small to large

Contacts:

Sales
Asia-
Pacific
Alain Schellings
Sales Director
+65 6271 9595
alain.schellings@stahl.de

Sales
Europe
Reiner Otterbach
Sales Director
+49 7942 943 4344
reiner.otterbach@stahl.de

Sales
Americas
Bill Anderson
Sales Director
+1 512-565 0410
billa@rstahl.com

Sales
Middle
East
Ravindra Jagasia
Sales Director
+971 4 8835 855 209
ravindra.jagasia@stahl.ae

R. STAHL Schaltgeraete GmbH

Am Bahnhof 30
74638 Waldenburg
Germany

Introduction to R. STAHL

R. STAHL is a leading expert for hazardous areas and has profound expertise in fieldbus, Profibus, and Ethernet applications. In 1987, R. STAHL developed one of the world's first and most successful remote I/O systems for use in hazardous areas: the IS1+.

The R. STAHL group offers one-stop shop, integration, and joint technical support.

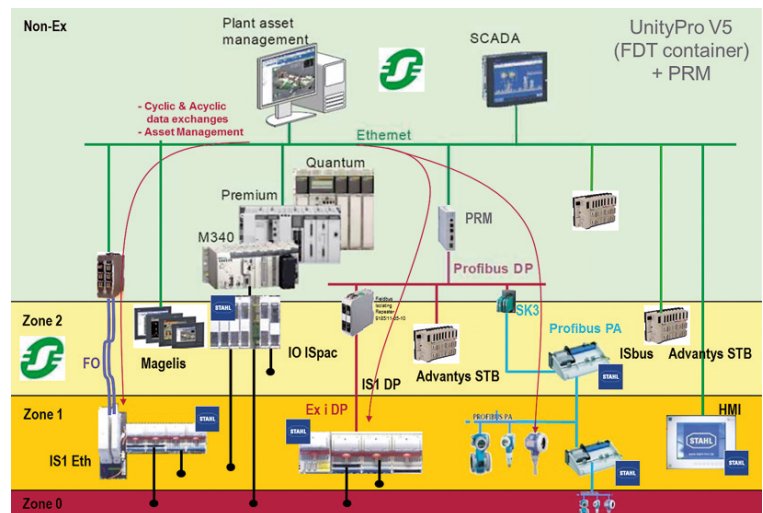
Product portfolio

The R. STAHL group is a leading global supplier of explosion-protected components and systems:

- Automation
- Control and distribution
- Installation
- Operating and monitoring
- Lighting
- Signaling and alarm

Within automation:

- Zener barrier – Intrinspak
- Galvanic isolators – ISpac
- Remote I/O – IS1+
- Fieldbus – ISbus
- Wireless – ISwireless
- HMI – Exicom
- Camera systems



Common solution architecture Schneider Electric– R. STAHL

Key products include customer-specific system solutions for hazardous areas. R. STAHL's packages contain tailored product combinations and a wide range of services such as consulting, project planning, engineering, and training courses for customers designed to fully meet application requirements and customer needs.

International certifications, approvals, and patents demonstrate the company's expertise and allow for R. STAHL's products to be used throughout the world.

R. STAHL is near to the customers with more than 70 subsidiaries and representatives on five continents. Moreover the technical support hotline is available.

Total systems

When Schneider Electric has projects where it has to do the control in hazardous areas, R. STAHL can provide the solution. For example:

- By conventional installation with galvanic isolators ISpac
- By remote I/O installation even in hazardous area zone 1 or div. 1 by using either Profibus DP or Ethernet (Modbus TCP or Ethernet IP) connection to the PLCs
- Fieldbus wiring components (fieldbus power supplies, segment protectors, and field barriers)
- HMI runs with Vijeo™ Designer 5.1 RunTime, including sunlight-readable version

Unique value proposition

R. STAHL offers high integration and joint technical support for customers.

R. STAHL wants to meet your specific application and customer requirements. Thus R. STAHL offers everything for the customer: from components to individual packages and systems up to containerized substations.

- Enormous saving potentials in the planning process thanks to efficient engineering
- Wide product range for optimum interaction of all components
- Special solutions for extreme temperatures
- Professional consultation in your region thanks to a worldwide distribution network
- Ready for large scale projects

Markets served



Primary sectors of activity



Secondary sectors of activity

End user					OEM					
Food & Beverage	Water	Oil & Gas	Mining Minerals	Electrical Energy	Hoisting	Lift	Packaging	HVAC & R	Conveying	Textile

Areas of expertise

ATEX and intrinsically safe environments

Hazardous areas

Design of communication solutions suitable for hazardous areas

Authorized CAPP products

Authorized CAPP products	Product description	Technology approved
IS1+ Remote I/O	Remote I/O multifunctional modules allow for a mixture of analogue inputs/outputs, digital inputs/outputs, and resistance thermometers/thermocouples per module with extended temperature range -40 °C to +75 °C.	Yes
IS 1 Remote I/O	With IS 1, R. STAHL now offers the second generation of an explosion-protected remote I/O system for installation in hazardous areas Zone 1/DIV 1 and Zone 2/Div 2. The system can be interfaced with RS485 (Profibus) or Ethernet (Ethernet IP) simplex or redundant.	Yes
Fieldbus ISbus	R. STAHL's fieldbus system ISbus guarantees the efficient and economical integration of fieldbus technology into modern process automation in explosive areas.	
Isolators ISpac	ISpac isolators offer the full and complete range of all I/O functions that you require for your tasks in the process industry to interface your intrinsic safe (Exi) field I/Os with the PLC/DCS.	
Open HMI Exicom ET 436	The Open HMI ET- 4x6-Tx and ET- 4x6-Fx are Panel PCs that can run any software and are suitable for installation in hazardous areas of Zones 1, 2, 21, and 22.	Yes
For more detailed product information, please consult: www.r-stahl.com		

schneider-electric.com

Life Is On

Schneider
Electric