

Rockwell SLC500 or PLC-5 to Modicon M580 / M340

Upgrading your control system is easier than you think.

Challenges you may be facing:

- Unexpected downtime due to aging equipment
- Difficulty supporting multiple PLC platforms and programming software packages
- Preserving the investment in your existing system during an upgrade
- Reduction in skills and/or staff at your plant
- Limited scheduled downtime during upgrades

Benefits of migrating to Modicon controllers:


- Minimum downtime and risk to upgrade — do it during planned maintenance
- Retain prior investment in software and field wiring
- Reduce unplanned downtime and enhance cybersecurity
- Productivity benefits from a new, more transparent, future-proof solution
- Supported by Schneider Electric global service and execution capabilities

Solutions and services for a smoother modernization

- Extensive experience with successful SLC500 and PLC-5 to M340/M580 migrations
- Automatic conversion of your RS Logix application into EcoStruxure Control Expert (formerly Unity Pro)
- Stepwise upgrades in phases to meet your budget and schedule
- Retain your existing I/O and racks if required
- Quick wiring solutions eliminate the time and risk of rewiring existing I/O

Switch to Modicon M340/M580

Replace CPU with Modicon M340/M580 and retain application program with a conversion service. Choose the preferred I/O rack and wiring solution — partial, stepwise, or full:

| Legacy CPU and I/O | Targeted CPU | Partial: Retain I/O racks and wiring | Stepwise: Change I/O racks, retain wiring | Full: Full replacement |
|--------------------|--|--------------------------------------|---|-------------------------------------|
| SLC500 or PLC-5 |  Modicon M340/M580 | <input checked="" type="checkbox"/> | <input checked="" type="checkbox"/> | <input checked="" type="checkbox"/> |

¹ Some applications may require minor adjustments

² The conversion process keeps the same original programming languages + comments



From
Rockwell PLC-5®



To
Modicon™ M580



or SLC500



or Modicon M340

"I want to thank the Schneider Electric services team for our migration from Rockwell to the Modicon system. Because our sodium hypochlorite system is our plant's primary means of disinfection, it was imperative that a quick, seamless migration took place. Our project of migrating to an improved PLC was done in a highly satisfactory manner. Thank you!"

Controls Engineer — Water/Wastewater plant

Automated efficiency

Repeatable, reliable processing with our conversion software

Minimal downtime

Typically 1 hour migration time per eight-slot rack

PLC application conversion and software upgrade:



Automatic conversion^{1,2} of RS Logix application to EcoStruxure Control Expert (formerly Unity Pro)

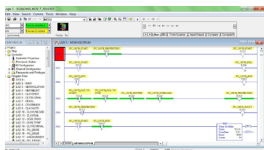


Migration solutions for Rockwell SLC500 and PLC-5

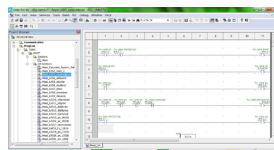
Software upgrade to EcoStruxure Control Expert (formerly Unity Pro)

Our proprietary software converter enables efficient conversion of your RS Logix application to the Modicon M340/M580 platform:

- Retain the look, feel, and function of your legacy applications
- Build on them by adding programming sections using the latest programming languages, functions, objects, and libraries of EcoStruxure Control Expert (formerly Unity Pro)



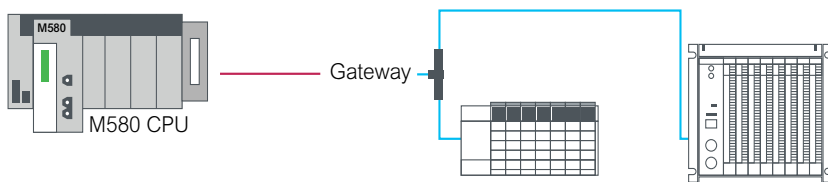
Before conversion



After conversion

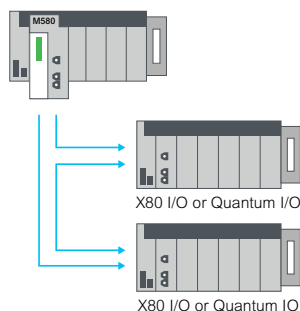
Hardware upgrade

Partial PLC upgrade to Modicon M340/M580, retaining legacy I/O racks and wiring:



Modicon M340/M580 connects to PLC-5 I/O using Ethernet to Rockwell Remote I/O gateway

Total PLC upgrade to Modicon M340/M580 and new X80 I/O while retaining field wiring



Benefits

For software

- Retention of prior investment in RS Logix programs
- Reduced risk and errors due to automatic conversion of legacy programs
- Reduced time to complete, migrations can be done in scheduled maintenance downtime windows

For hardware

- Retention of prior investment in existing racks and/or wiring
- Simplified modernization with no rewiring and reduced commissioning time
- Flexibility to upgrade in phases — address operational or budget constraints

Time saving solutions

Our quick wiring adapters let you change legacy Rockwell SLC500 or PLC-5 I/O while retaining field wiring:



PLC-5 I/O quick wiring adapters mounted on an M340/M580 PLC



Wiring adapter



Front mounted SLC500 wiring adapters

se.com

Life Is On

Schneider
Electric