













Newsletter February 2017



Index

- Robustness improvements of Harmony XB4 / XB5 
- Harmony 3-phase LED indicators 
- Harmony new simple timer 
- Harmony USB & RJ45 interfaces 
- ATV32 end of life announcement 
- Altivar quick start guides 
- Altivar 320 for simple & advanced machines 
- M580 NOC Control Router Module 
- TeSys Safety chain 
- TeSys laser 
- Product selection for motor controllers made easy 
- Schneider Electric News 2016 

Meet the first supplier of pushbuttons with IP69 & IP69K



Harmony XB4 / XB5, the most robust control panel components on the market, is getting even better!

The cost of a pushbutton is just a small part of the total machine or control panel cost. But machine failure, caused by a pushbutton can be a huge cost. Since decades, Harmony XB4 / XB5 has proven to be the most robust and complete range on the market. Today, we improve this robustness without any change for your customers, or the operators of your machine.

What has changed:

- IP69, 69K , 66 and 67 as standard across the complete XB4 metal range
- IP69, 69K , 66 and 67 as standard across the XB5 plastic range (except the pilot light: IP66)
- -40°C to +70°C operating temperature for plastic & metal offers
- Increased mechanical & electrical performances for plastic & metal offer. (mechanical durability: 10.000.000 operations)
- Improved shock protection (IK06 for XB4 metal range & IK03 for XB5 plastic range)
- Renewal of Marine certification for metal & plastic offers (Lloyd's register, BV, DNV/GL, Rina...)



Download the newest catalogues ([XB4](#) / [XB5](#))

schneider-electric.be

Schneider Electric nv/sa – Customer service: +32(0)2 37 37 502 (NL) / 501 (FR)
customer-service.be@schneider-electric.com - www.schneider-electric.be



Life Is On

Schneider
Electric

Three times less time consuming? That must be Harmony XB5!



XB5EV57* 3-phase LED indicator in one single hole

Safe detection of 3 phases presence without opening the panel. Usually it means buying three pilot lights, drilling three holes, cabling the three leds. With Harmony XB5EV57*, you drill one single hole of 30 mm and connect it directly with 400 VAC. That is three times as fast as the regular way!

Discover it now:

Red / Green / Yellow



**3-phase pilot light
400 VAC**

XB5EV57K4

White / White / White



XB5EV57L4

[schneider-electric.be](https://www.schneider-electric.be)

Schneider Electric nv/sa – Customer service: +32(0)2 37 37 502 (NL) / 501 (FR)
customer-service.be@schneider-electric.com - www.schneider-electric.be



Life Is On

Schneider
Electric

A simple time relay with front panel settings in a 22 mm hole!



Function A:
Delay on energisation



XB5DT* : easy time settings for simple machines

XB5DT allows you to easily set the time delay on a machine action. There are 4 time ranges available from 0,5 seconds to 60 minutes. The timer has a static output and a supply of 24V DC and 110...240V DC/AC 50/60Hz. A green LED is blinking when operating and is fixed when time has expired. All of this in a 22mm hole!
Discover it now!

XB5DT * * * *

B2: 24V DC
GM: 100...240V AC/DC

2: 0,5 sec to 10 sec
3: 3 sec to 60 sec
4: 0,5 min to 10 min
5: 3 min to 60 min

Eg: XB5DTB23: timer 24V DC with 3 sec to 60 sec time delay

schneider-electric.be

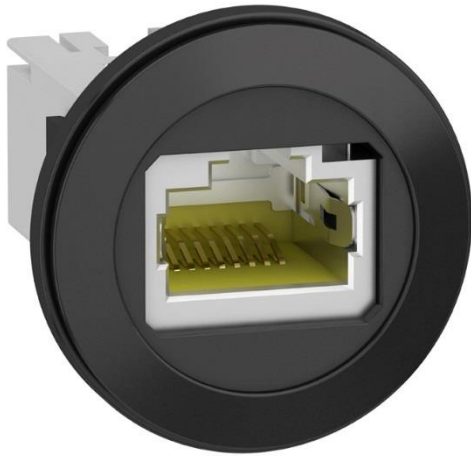
Schneider Electric nv/sa – Customer service: +32(0)2 37 37 502 (NL) / 501 (FR)
customer-service.be@schneider-electric.com - www.schneider-electric.be



Life Is On

Schneider
Electric

A secure and easy data connection to the inside of the panel



XB5P* : USB & RJ45 interfaces for 22mm holes

This device allows for a secure connection to any USB or RJ45 connected device (HMI or PLC) within an enclosure or panel without opening the panel door. This results in zero risk of pollution inside the panel in harsh environments. It assures a fast and easy connection to a PC or USB stick for data export and there is no need of an authorized electrician operator for opening the panel door.

Discover it now!

*USB 3.0 interface
A-A connection type*



*RJ45 interface
Ethernet connection type*



Reference

XB5PUSB3

XB5PRJ45

Accessories

*Black protection cover
IP65 / IP67*



ZBSP1

*Tranparant protection cover
IP65 / IP67*



ZBSP2

*Metal protection cover
IP65 / IP67 / IP69K*



ZBSP3

schneider-electric.be

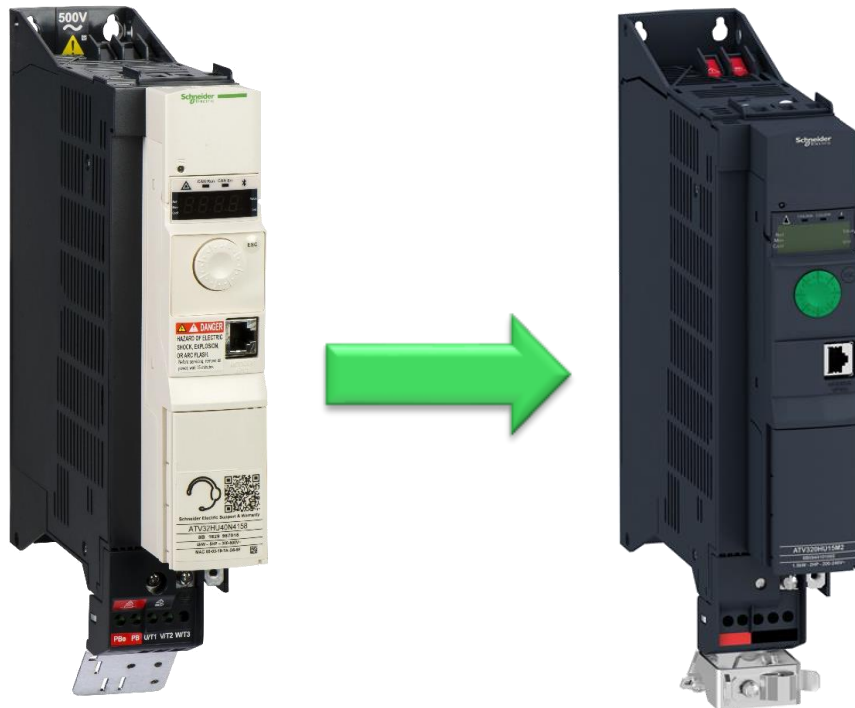
Schneider Electric nv/sa – Customer service: +32(0)2 37 37 502 (NL) / 501 (FR)
customer-service.be@schneider-electric.com - www.schneider-electric.be



Life Is On

Schneider
Electric

ATV32: End of life announcement



ATV32 becomes ATV320B

The ATV32 series will be available until April 2017. The ATV32 series is replaced one by one with the new series ATV320 Book type. The old and the new series are fully compatible as well mechanically as functionalities.

A conversion table is available via the next [link](#)

An update for your software (SoMove & SoMachine) is also available: [link](#)

Key points for the ATV320:

- **Safety function embedded**
 - Safe Torque Off (STO), Safe Stop 1 (SS1), Safe Limited Speed (SSL), Safe Maximum Speed (SMS), Guard Door Lock (GDL)
- **Advanced connectivity**
 - Modbus RTU, CANopen are embedded, Profibus DP, Modbus TCP, EtherNet/IP, ProfiNet, EtherCAT via option module
- **Robust design**
 - Up to 50°C
 - Increased protection for the PCB to reach IEC 60721-3-3, chemical class 3C3 and mechanical class 3S2
- **Economical**
 - EMC filter embedded
 - Power supply 24VDC for external components
 - Embedded logical programming with ATV Logic

schneider-electric.be

Schneider Electric nv/sa – Customer service: +32(0)2 37 37 502 (NL) / 501 (FR)
customer-service.be@schneider-electric.com - www.schneider-electric.be



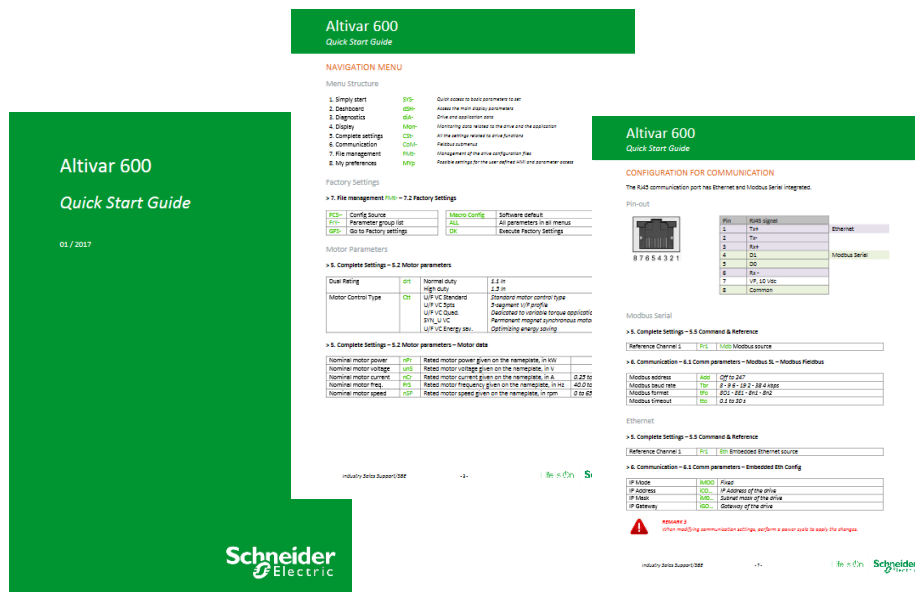
Life Is On

Schneider
Electric

Guidance during your Altivar commissioning

Altivar Quick Start guides results in a fast commissioning

The Quick Start guides are created to help our customers with their first commissioning on one of our Altivar Variable Speed drives. These guides help you navigate through the main pages of the menu-driven set-up of the Altivar or settings via SoMove. A list of important remarks and FAQ help you solve possible issues during the commissioning.



Discover the Quick Start guides



Altivar ATV212
→ [Download](#)



Altivar ATV600
→ [Download](#)



Altivar ATV320
→ [Download](#)



Altivar ATV900
→ [Download](#)

schneider-electric.be

Schneider Electric nv/sa – Customer service: +32(0)2 37 37 502 (NL) / 501 (FR)
customer-service.be@schneider-electric.com - www.schneider-electric.be



Life Is On

Schneider
Electric

Altivar 320, for simple & advanced machines



It's time to find out about the Altivar 320 speeddrive

Looking for a speeddrive with advanced **connectivity**, integrated **safety**, reliable & accurate motorcontrol or just for a **replacement** of your Altivar 32 or Altivar 312? Then it's time to discover the Altivar 320!

NL

www.schneider-electric.be/ontdekativ320

FR

www.schneider-electric.be/decouvrezativ320

schneider-electric.be

Schneider Electric nv/sa – Customer service: +32(0)2 37 37 502 (NL) / 501 (FR)
customer-service.be@schneider-electric.com - www.schneider-electric.be



Schneider
Electric

M580 NOC Control Router Module

The current M580 offer is now enhanced by introducing a new Ethernet module in order to allow transparency from the Control network to the Device network. The BMENOC0321 – NOC Control provides connectivity to field devices from SCADA and asset management systems on the control network. The BMENOC0321 reduces the foot print of the architecture by limiting the number of external routers.

M580 NOC Control module
ref. BMENOC0321



Ethernet Service port

Dual Gigabit Ethernet ports



*Also available in
coated version*

Main benefits

Products available in March 2017!

- **Embedded IP Forwarding (Static Routing)**
 - Lower cost solution vs costly third party routers
 - Provides transparency between networks such as the Control network and Field Device network
- **Time Synchronization (NTP)**
 - Time synchronization allows for better process control
- **SMTP (Email)**
 - Better alerts and diagnostics via email
- **Fast Device Replacement service supported**
 - Easy configuration allows for quick replacement
 - View topology by machine or by cluster
- **Multiple diagnostics**
 - Monitor switch and network performance with web page & other system tools
 - Customizable FactoryCast web pages for better diagnostics
- **Cyber Security**
 - Secure Communication: IPSEC
 - Firmware signing and encryption
 - Access Control List & Application Authentication
 - Attack surface Reduction: disabling unused Services
 - Robustness of Communication Stack: Achilles Certification L2

Download data sheet: ([EN](#))

schneider-electric.be



BMENOC
Architectures

Clearly visible safety chain on TeSys makes your life easier

TeSys contactors and TeSys U motor starters are certified according to IEC 60947-4-1 for safety applications thanks to the integrated mirror contact.

In order to clearly identify them in the safety-chain, retrofitable red colored accessories are available.

Standard TeSys D contactors

Easy-to-attach covers:



Auxiliary blocks for more contact points:



Standard TeSys U motor starters

Translucent labels to identify safety-chain devices:



Main benefits



Flexibility to customise contactors included in the safety chain during panel building



Simpler and faster maintenance with 100% visibility



Safety covers and auxiliary blocks prevent screwdriver contact with poles

TeSys D range

Retrofit contactor safety covers



LAD9ET1S
9A up to 65 A



LAD9ET3S
80A to 95A



LAD9ET4S
110A to 150A

Auxiliary contact block



LADN22S
2NO + 2NC

Also available for CAD32/CAD50

TeSys U range

Retrofit identification label



LU9ET1S

➔ Download the flyer "[TeSys safety chain](#)"

schneider-electric.be

Schneider Electric nv/sa – Customer service: +32(0)2 37 37 502 (NL) / 501 (FR)
customer-service.be@schneider-electric.com - www.schneider-electric.be



Life Is On

Schneider
Electric

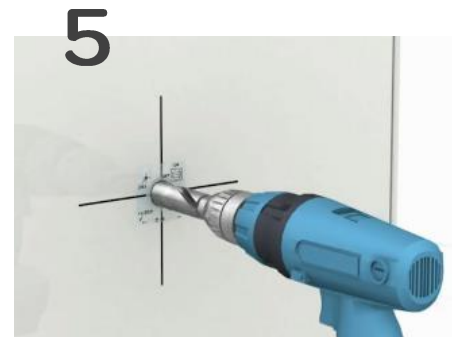
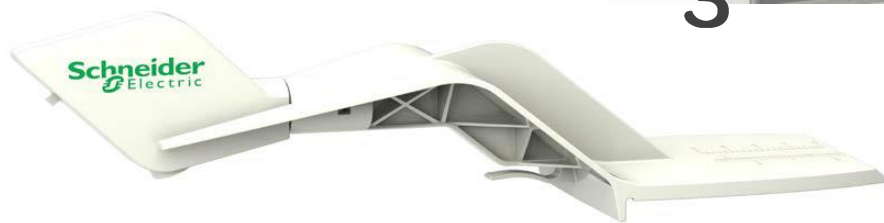
TeSys Laser: the tool that helps you locate drill hole positions fast and precise

Drill confidently with TeSys Laser Tool

Locating the exact position for drill holes to mount trough-the-door mechanisms of motor protections or circuit breakers can be time consuming and not always easy to realize. Thanks to the Schneider Electric TeSys Laser Tool no tedious measuring is needed, this job can be fixed in seconds.

Main Benefits

- Saves installation time
- Spot on location
- Magnetic hold to the panel
- Ergonomic design for door closure
- Easy check to see if name plates are aligned
- Lightweight



Commercial reference: **GVAPL01**



Discover the TeSys Laser Tool on Schneider Electric TV
Search for "[TeSys Laser](#)"

[schneider-electric.be](https://www.schneider-electric.be)

Schneider Electric nv/sa – Customer service: +32(0)2 37 37 502 (NL) / 501 (FR)
customer-service.be@schneider-electric.com - www.schneider-electric.be



Life Is On

Schneider
Electric

Product selection for motor controllers made easy

Smart selection with smart tools

Schneider Electric is offering several tool to help selecting the right products for the right application. All tools are very user friendly, well documented and always up-to-date.

TeSys Motor Controller smart selector App

The TeSys motor starter selector app is a tool for Android and Apple iOS devices, which enables you to easily identify which products you need to suit your motor starter application.



How does it work?

Simply provide your application specifications based on IEC standards: Operating voltage, power, current, contactor control voltage, direction & coordination type. The app instantly specifies the best technical combination of circuit breaker, contactor and thermal relay for your application specifications.

Features

- Different selection criteria for specific solutions
- Motor starter coordination (Type 1, 2 or total)
- 1, 2 or 3 products solutions
- Best technical combination of products for motor starting (with references)
- Electrical data based on IEC standards (Nominal Current, Short-circuit current, Max thermal current) according to the selection criteria
- Quick technical information about coordination and Schneider Electric solutions

Try it out now! Visit [our web site](#) to discover the app.

Discover also our on-line motor controller selection tools

TeSys on-line Motor Controller smart selector App

→ [Go to Smart Selector](#)

Motor Controller Smart Selector is an online tool to select and configure your solution to protect and control a motor. It will create a Bill Of Material of selected product combinations, associated add-on blocks and accessories (with export capability in xls format) & associated product data sheets.

Enclosed Motor starter solution guide

→ [Download the software](#)

The Enclosed Motor Starter Guide is a software destined to select an enclosed motor starter solution according to IEC 60947-4-1 standard and add the needed components to the bill of material "basket".

schneider-electric.be

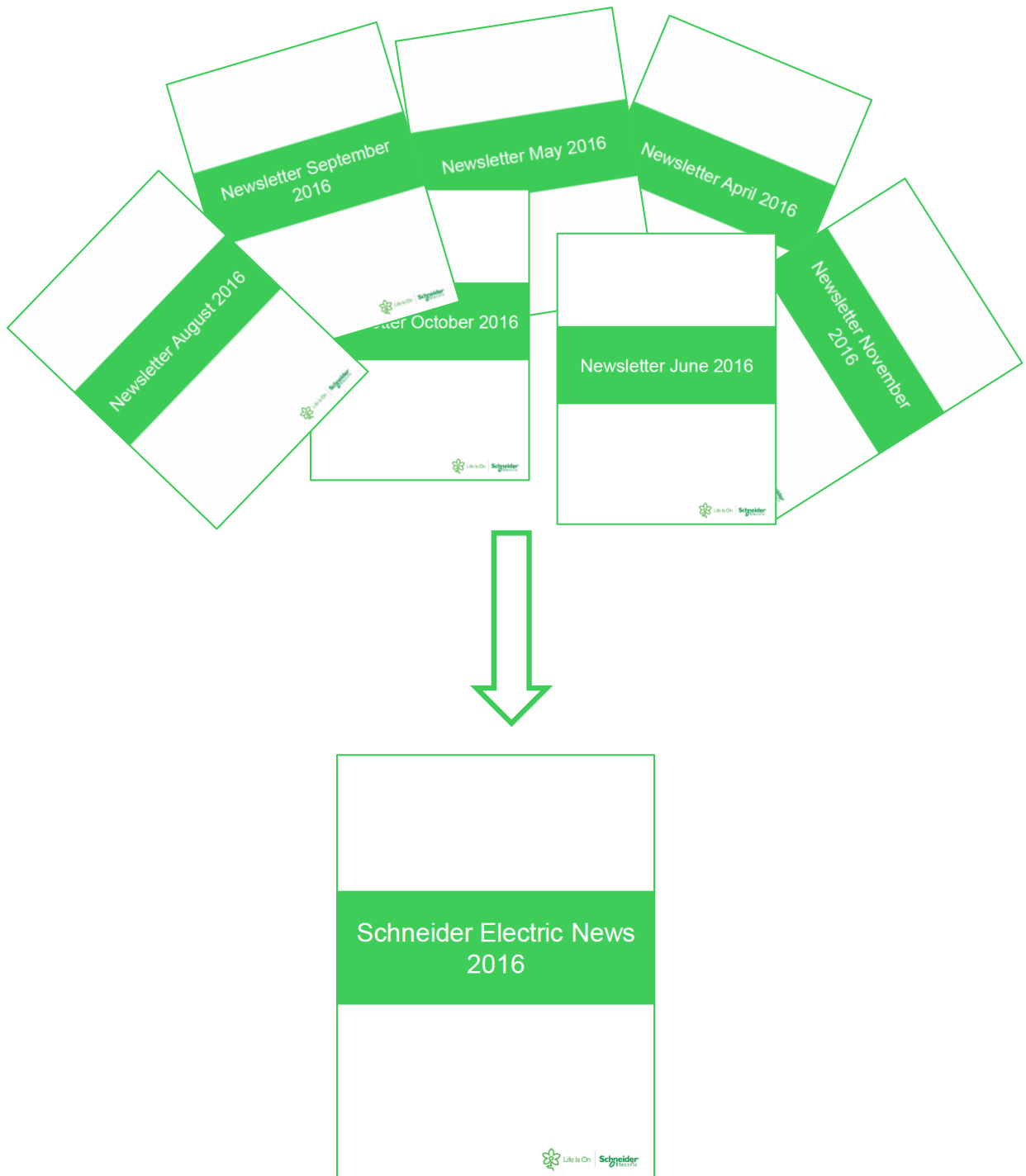
Schneider Electric nv/sa – Customer service: +32(0)2 37 37 502 (NL) / 501 (FR)
customer-service.be@schneider-electric.com - www.schneider-electric.be



Life Is On

Schneider
Electric

All 2016 newsletters combined in one single handy document



schneider-electric.be

Schneider Electric nv/sa – Customer service: +32(0)2 37 37 502 (NL) / 501 (FR)
customer-service.be@schneider-electric.com - www.schneider-electric.be



Schneider
Electric

Archive

Download the previous newsletters

[April 2016](#)

[May 2016](#)

[June 2016](#)

[August 2016](#)

[September 2016](#)

[October 2016](#)

[November 2016](#)

[January 2017](#)