

# XBTL900 software

user's guide

V ≥ 1.3 supplement



**Telemecanique**

GRUPE SCHNEIDER

## **WARNING**

This guide describes the changes in the functions of XBT-L900 V1.3 software with respect to version V1.2. It is a supplement to the user guide "Printing messages with XBT-L900".

Used by itself, it does not contain sufficient information for complete installation of all terminals in the XBT range.

The reader should refer to the user manual for the selected terminal where he will find details of its functions and all necessary information for setting it up.

**Trademarks** : TSX7, TELWAY, UNI-TELWAY, UNI-TE, X-TEL, XBTEL are Telemecanique trade marks.

MS-DOS, MS-OS/2 and WINDOWS are Microsoft Corporation trademarks.

PC, PS/2 are International Business Machine Corporation trademarks.

MODBUS is a Modicon trademark.

JBUS is an April trademark.

---

# Contents

<b>Section</b>	<b>Page</b>
<b>1 Introduction</b>	<b>6</b>
<b>2 Updating from V1.2 -&gt; V 1.3 software</b>	<b>15</b>
<b>3 Programming the XBT-BB terminal</b>	<b>23</b>
<b>4 XBT-VM terminal support</b>	<b>42</b>
<b>5 Programming the XBT-M terminal</b>	<b>56</b>
<b>6 Appendices</b>	<b>95</b>

# Contents

---

Section	Page
<b>1 Introduction</b>	<b>6</b>
1.1 XBT-L900 V 1.3 supplement	6
• Structure of the guide	6
1.2 XBT-L900 installation	7
1.3 Using the guides for the terminal selected	13
<b>2 Updating from V1.2 -&gt; V 1.3 software</b>	<b>15</b>
2.1 Improvements to existing functions	15
• Version identification	15
• Enhancements to user friendliness	16
• Acceleration of PC <-> XBT transfers	17
2.2 Enhancements to programming the terminal	18
• Improvements to programming of XBT-V terminals	18
• Advanced programming of the XBT-M terminal	19
2.3 Integrating the new terminals	20
• Programming the XBT-A4 terminal	20
• Programming the XBT-BB terminal	21
• Programming the XBT-M terminal	21
• XBT-VM terminal support	22
<b>3 Programming the XBT-BB terminal</b>	<b>23</b>
3.1 Summary of operation	23
• General	24
• Parameter-setting table	25
• Dialogue table	26
• Message list	27
3.2 How to create an application using XBT-L900	28
• Selection of the method	28
• Stages of creating an application	28

---

Section	Page
<b>3 Programming the XBT-BB terminal</b>	<b>(continued)</b>
3.3 Configuring the parameter-setting table	29
• Access to the parameter-setting table	29
• Selection of parameters	30
3.4 Creating the message list	32
• Associated variables	33
• Addresses of variables	33
3.5 Configuring the operating link	34
3.6 Saving the application	35
• Selection of directory to save to	35
• Saving	35
3.7 Printing the documentation	36
3.8 Transferring the application	37
• Exporting (PC -> XBT-BB)	38
• Importing (XBT-BB -> PC)	40
<b>4 XBT-VM terminal support</b>	<b>42</b>
4.1 Summary of operation	42
• General	42
• Creating the pages	42
• Application script	43
4.2 Development using XBT-L900 software	44
• Method	45
• New application	45
• Retrieving an existing application	45

<b>Section</b>	<b>Page</b>
<b>4 XBT-VM terminal support</b>	<b>(continued)</b>
4.3 Configuring the XBT-VM terminal	47
• General	48
• Size of requests	49
• Application configuration	51
4.4 Transferring the application	52
• Changes to XBT-L900 software from V 1.2 to V 1.3	52
• Operating modes	52
<b>5 Programming the XBT-M terminal</b>	<b>56</b>
5.1 Summary of operation	56
• Using simple functions	58
• Control system command	58
5.2 Application development using XBT-L900	59
• Developing a new application	59
• Retrieving applications created using XBT-L900 V 1.2	60
5.3 Creating the user's own font	61
• Tools available	63
• Macro-symbols	64
• Saving the font set	64
5.4 Creating the message list	65
• New message list	66
• Entering data	68
• Selection of the font set	69
5.5 Creating macro-messages	73
5.6 Creating the operator guide	78
• Entry of operator guide	79
• Using macro-messages	81

---

<b>Section</b>	<b>Page</b>
<b>5 Programming the XBT-M terminal</b>	<b>(continued)</b>
5.7 Configuration - Messages displayed by default	83
• Configuration	83
• Messages displayed by default	87
5.8 Saving the application	88
5.9 Printing and transferring the application	90
• Printing	90
• Transferring from PC -> XBT-M (Export)	91
• Transferring from XBT-M -> PC (Import)	94
<b>6 Appendices</b>	<b>95</b>
6.1 File organization	95
6.2 Erasing	96
• Erasing an application file	96
• Erasing a directory	96
6.3 Compatibility	97
• Communication protocols	97
• Software compatibility	98
• Possibility of retrieving programs created using XBT-L400 and XBT-L100 via XBT-L900	98
• Compatibility between XBT-L900 V 1.3 / XBT terminals	99

# 1 Introduction

---

## 1.1 XBT-L900 V 1.3 supplement

---

This guide is a supplement to the user guide "Printing messages with XBT-L900" which describes the use of version V 1.2 software. The numerous changes and improvements in version V 1.3 of the software package are described in this supplement.

The latest version of XBT-L900 V 1.3 software enables the user to program the new XBT terminals, as well as the new functions on existing terminals.

There have also been improvements in user friendliness and PC <-> XBT transfers.

The user who already has XBT-L900 V 1.2 software on FTX 507, FTX 417 programming terminals or on a compatible PC will be interested in updating it as the new software package is completely compatible with the old version, enabling all developed applications to be retrieved and, at the same time, offering additional functions.

The user should follow the procedure described in this manual to install or update the software.

- **Structure of the guide**

This supplement to the XBT-L900 software user guide comprises 6 sections, arranged as follows :

- 1. Introduction**

This section describes the V 1.3 supplement, structure of the guide, software installation and updating procedures and how to use the guides for XBT terminals.

- 2. Updates from V 1.2 -> V 1.3**

This section describes improvements to the software, the updates and programming of the new terminals in version V 1.3.

- 3. Programming the XBT-BB terminal**

This section describes how to create an application for the XBT-BB and all the corresponding operating modes.

- 4. XBT-VM terminal support**

This section describes the changes and how to import XBT-VA applications to the new XBT-VM terminals.

---



# 1 Introduction

---

## 5. Advanced programming of the XBT-M terminal

This section outlines the programming of the XBT-M terminal already described in the previous guide and presents all the new functions available.

## 6. Appendices

The appendix contains various information concerning the use of XBT-L900 V 1.3 software and problems which may arise for the user.

---

## 1.2 XBT-L900 installation

---

### Configuration required

XBT-L900 V 1.3 software runs on Telemecanique FTX 507 and FTX 417 PC-compatible programming terminals.

XBT-L900 V 1.3 will also run on a PC-type microcomputer or compatible or on a PS/2 equipped with at least :

- MS-DOS or PC-DOS version 3.0 or later,
- a 5"1/4 or 3"1/2 format disk drive
- 10 Megabyte hard disk,
- 2 Megabyte RAM memory,
- a serial port (RS 232 C asynchronous link) for communication with the XBT,
- an additional serial port or a dedicated mouse port,
- WINDOWS 3.1 or 3.0 (standard or advanced mode).

There are two different situations :

- To install a new version refer to the user guide "Printing messages with the XBT-L900" which describes the software installation procedure (Section 2, pages 7 to 13).

- To update a previous version of XBT-L900 software to the new V 1.3 version, the following procedure should be used :

#### • Stage 1 : copying the XBT-L900 V 1.3 files to hard disk

- Using DOS
- Select the drive where you wish XBT-L900 to be copied (eg c):

type  then press 


- Create a sub-directory for XBT-L900 V 1.3 :

type  then press 


# 1 Introduction

## XBT-L900 installation

- Change to the new directory :

type  then press 

- Place the XBT-L900 disk in the disk drive (a: for example)
- Copy the disk files :

type  then press 

- Remove the disk from the drive and put it in a safe place.

### • Stage 2 : Installing the XBT-L900 application under WINDOWS 3

- Start WINDOWS

- Activate the "WINDOWS SET UP" icon in the main group (this icon may be located in another group, depending on how WINDOWS has been installed).

- Select    OPTIONS  
          SET UP APPLICATIONS  
click     without making any modifications.

- In the list of applications : select XBT-L900

click on  then .

- Close the "WINDOWS SET UP" window.

XBT-L900 VERSION V 1.3 CAN BE  
IDENTIFIED BY THE NEW ICON



Xbtl900

Version V 1.2




Xbtl900

Version V 1.3

# 1 Introduction

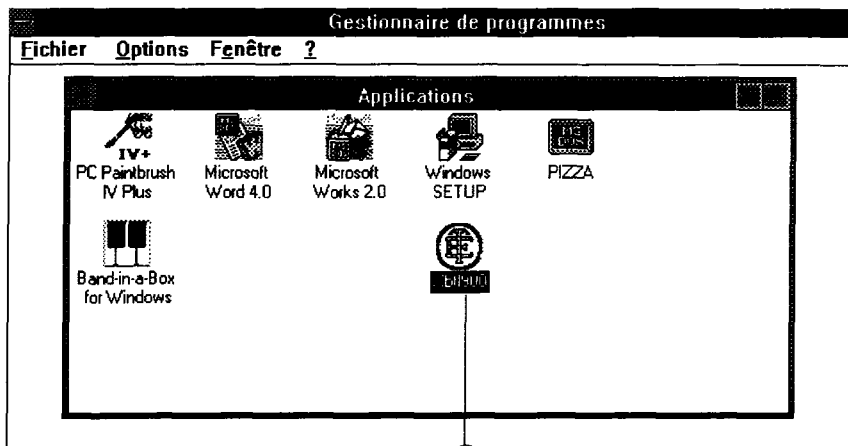
## XBT-L900 installation

- **Stage 3 : Checking installation**
- **If WINDOWS is not already open, start as follows :**

Type  then press .

- **Open the group "APPLICATIONS " by double clicking on its icon**

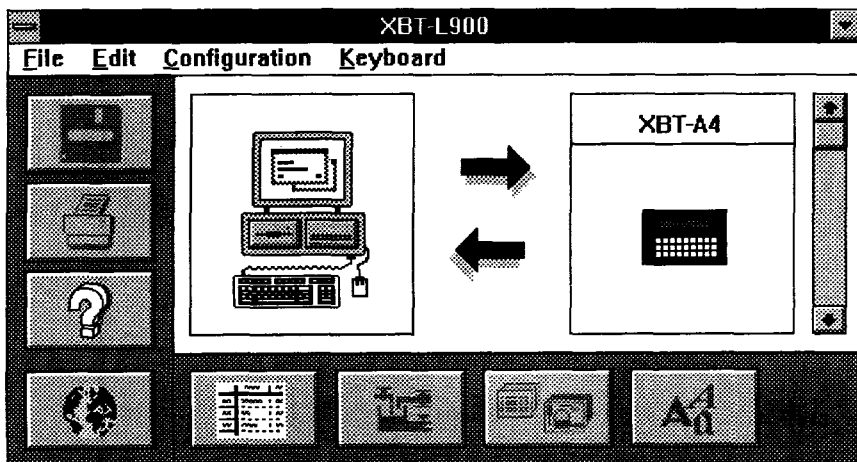
**Note:** You should get the following screen in English from you Windows software.



Icon **(A)** appears under the "APPLICATIONS" heading selected.

- **Launch XBT-L900 by double clicking on icon **(A)****

The main XBT-L900 application window appears :



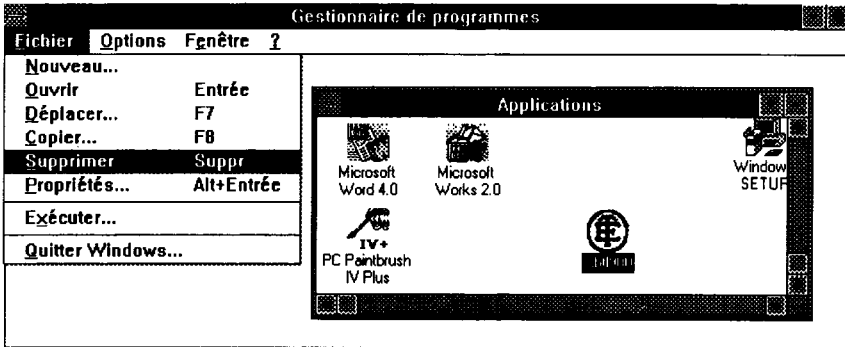
## XBT-L900 installation

### • Stage 4 : Deleting the old version

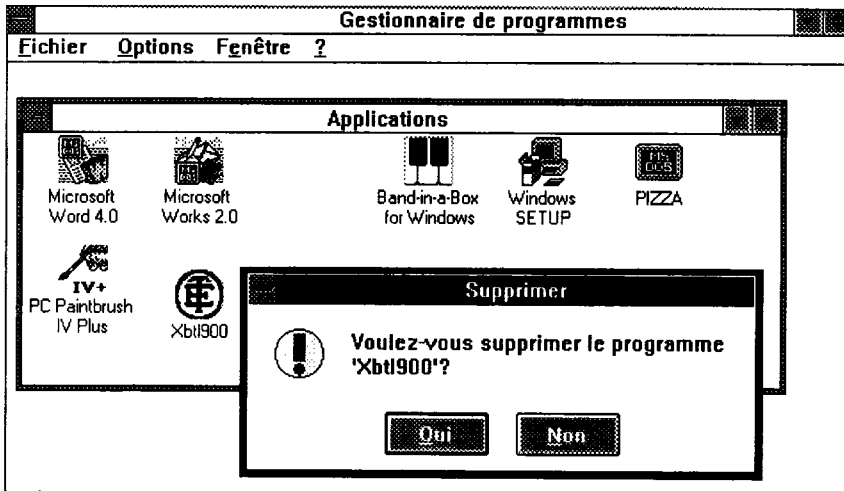
- After testing the new version of the XBT-L900 V 1.3 software and importing the applications, the old version can be deleted by the following procedure :

#### Deleting the application under WINDOWS

After choosing the program icon to delete, go to the "File" menu and select delete. This operation does not delete the program files, but cancels launching the program from WINDOWS using the icon.



The deletion is confirmed by answering the following request :



**Note:** You should get the above screens in English from you Windows software.

# 1 Introduction

---

## XBT-L900 installation

---


Deleting program files :

**Warning :**


Deleting program files should not cause deletion of application files (extension .ctx, .xfn, .xap, .xts, .xgr, .fon). These files should not normally be in the same directory as the program files. If they are, they should be saved before any of the files in the directory are deleted.

To delete old version XBT-L900 files use WINDOWS File Manager (see the next page and the WINDOWS documentation) or the following procedure can be used under DOS :


- Using DOS,
- Select the drive of the old version XBT-L900 (eg. c:)

type  press 

- Select the directory of the old version :

type  press 


- Request the list of files in the directory :

type  press 


- Check there are no files with the following extensions :  
(application files)

.CTX    .XFN    .XAP    .XTS    .XGR    .FON


- Delete all the files in this directory

type  press 


- Confirm deletion

type  press 

- Quit the directory

type  press 

- Delete the directory

type  press 

## XBT-L900 installation

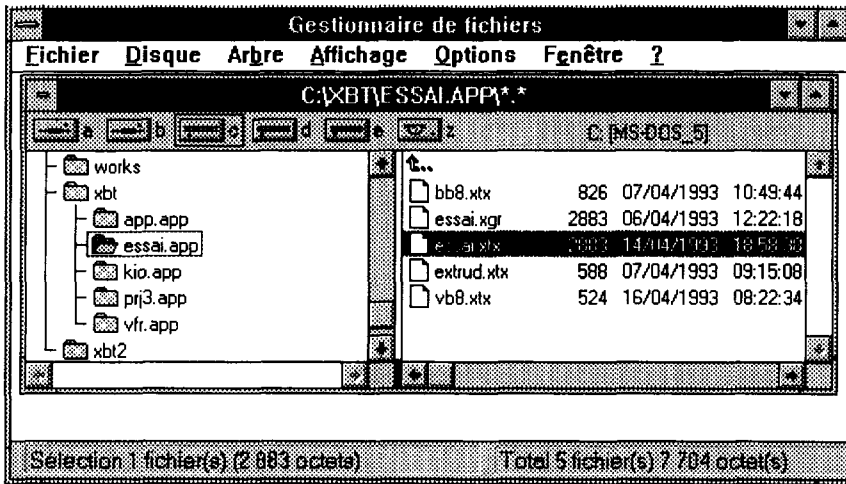
### • Deleting an application file under WINDOWS

Use the "File Manager" in the main WINDOWS group.

- Start File Manager by double clicking on its icon
- Select the folder containing the file to be deleted (click on its icon).

The File Manager displays the file storage tree of the directories in this folder :

**Note:** You should get the following screen in English from you Windows software.



- Select the directory containing the file to be deleted (double click on the name of the directory)
- Repeat this operation as many times as necessary if there is a sub-directory
- Click on the file name (eg. : ESSAI.XTX),
- Select the command "File" then "Delete"
- Confirm deletion.

### • Deleting a directory

Use the same method but select a directory name rather than a file name.

For further information concerning these operations, refer to the WINDOWS user guide.

# 1 Introduction

## 1.3 Using the guides for the terminal selected

The new models of XBT terminal can be programmed with the new version of XBT-L900 V 1.3 software. New functions are also available to the users of existing models.

As V 1.3 software is completely compatible with its predecessors it is very easy for users to convert to the new version.

For new users the information found in the user guide "Printing messages with XBT-L900" is very useful to ensure correct use of the software and operating modes.

The following tables illustrate the manuals and sections the user should refer to for optimum use of the software.

**User guide : "Printing messages with XBT-L900"**

XBT TYPE	SECTION ON USING THE PROGRAM					
	Terminals with keyboard/display		Multifunction Display unit	Screen terminals		
	4.1	4.2	4.3	4.3	4.4	4.5
XBT-A4	X	X				
XBT-A7	X	X				
XBT-A8	X	X				
XBT-B4	X	X				
XBT-B7	X	X				
XBT-B8	X	X				
XBT-C4	X	X				
XBT-C7	X	X				
XBT-C8	X	X				
XBT-C87	X	X				
XBT-K7	X	X				
XBT-K8	X	X				
XBT-VA8				X	X	X
XBT-VB4				X	X	
XBT-VB8				X	X	

# 1 Introduction

---

## Using the guides for the terminal selected

---

For new terminals and new functions on existing terminals, refer to the following sections of the supplement.

**User guide : "Printing messages with XBT-L900"  
Version V 1.3 supplement June 1993**

<b>XBT TYPE</b>	<b>SECTION ON USING THE PROGRAM</b>		
	<b>Terminals with keyboard/display</b>	<b>Multifunction Display unit</b>	<b>Screen terminals</b>
XBT-A4	2.2		
XBT-BB	3		
XBT-VM			4
XBT-M	5	5	

---