



Monitor Pro Installation Roadmap

Version 1.2

To save time, be sure to read this document **FIRST**
before beginning your Monitor Pro installation.

© Copyright 2002 Schneider Automation, Inc. and United States Data Corporation. All rights reserved.

NOTICE:

The information contained in this document (and other media provided herewith) constitutes confidential information of Schneider Automation, Inc. (“Schneider”) and United States Data Corporation (“USDATA”) and is protected by copyright laws and international copyright treaties, as well as other intellectual property laws and treaties. Such information is not to be disclosed, used or copied by, or transferred to, any individual, corporation, company or other entity, in any form, by any means or for any purpose, without the express written permission of USDATA.

The information contained in this document and related media constitutes documentation relating to a software product and is being provided solely for use with such software product. The software product was provided pursuant to a separate license or other agreement and such information is subject to the restrictions and other terms and conditions of such license or other agreement.

The information contained in this document and related media is subject to change without notice and does not represent a commitment on the part of Schneider or USDATA. Except for warranties, if any, set forth in the separate license or other agreement relating to the applicable software product, Schneider and USDATA make no warranty, express or implied, with respect to such information or such software product.

USDATA and FactoryLink are registered trademarks of United States Data Corporation in the United States and/or other countries. Software Bus is a registered trademark licensed to United States Data Corporation. Monitor Pro is a registered trademark of Schneider Automation, Inc. in the United States and/or other countries. All other brand or product names are trademarks or registered trademarks of their respective holders.

Table of Contents

Overview	1
Audience.....	1
How to Use This Guide.....	1
Step 1—Select the Right Scenario	2
Step 2—Perform Common Procedures	3
Step 3—Go to the Section that Contains Your Scenario	4
Scenario Flowcharts	4
If You Need Help	4
Scenario 1—Installing Monitor Pro v7 (New User)	7
Server/Client.....	7
Server Only	11
Client Only	15
WebClient.....	17
Scenario 2—Installing Monitor Pro v7++ (New User).....	21
Server/Client.....	21
Server Only	25
Client Only	29
WebClient.....	31
Scenario 3—Upgrading Monitor Pro 2.1 to Monitor Pro v7	35
Server/Client.....	35
Server Only	39
Client Only	43
WebClient.....	45
Scenario 4—Upgrading Monitor Pro 2.1 to Monitor Pro v7++.....	49
Server/Client.....	49
Server Only	54
Client Only	58
WebClient.....	60

Scenario 5—Converting Monitor Pro v7 to Monitor Pro v7++	63
Server/Client.....	63
Server Only	65
Client Only.....	67
WebClient.....	68
Appendix A—Installation Resources.....	69
Installation CDs.....	69
Monitor Pro v7	69
Monitor Pro v7++.....	69
SQL Server 2000 Pack	69
Installation Documentation	69
Monitor Pro v7	69
Monitor Pro v7++.....	70
Installation Questions.....	70
Monitor Pro Patches.....	70

Overview

This guide provides a high-level, comprehensive, step-by-step process overview that describes how to install Monitor Pro using the appropriate scenario that addresses your particular installation requirements. Consider this guide to be your roadmap for a successful installation of Monitor Pro.

This guide contains five possible installation scenarios that describe the steps for:

- ✓ Installing Monitor Pro v7 as a new user
- ✓ Installing Monitor Pro v7++ as a new user
- ✓ Upgrading Monitor Pro 2.1 to Monitor Pro v7
- ✓ Upgrading Monitor Pro 2.1 to Monitor Pro v7++
- ✓ Converting Monitor Pro v7 to Monitor Pro v7++

Where necessary, these scenarios describe:

- ✓ Where to go in the Monitor Pro documentation set to find detailed information that you need to perform the installation step
- ✓ Which CDs to use to find installation files
- ✓ What additional information you should know that could affect the installation

Audience

This guide is for both new and existing customers who are responsible for planning and implementing Monitor Pro installation.

Note: Installation time is approximately 30 minutes for experienced users and 60 minutes for new users.

How to Use This Guide

There are three simple steps for using this guide to install Monitor Pro:

1. Refer to the “Select the Right Scenario” section to determine which of the five scenarios applies to your installation needs.
2. Read the “Perform Common Procedures” section to know the initial steps that you should take that are common to all installation scenarios.
3. Go to the section that contains the scenario that you determined in Step 1 meets your installation needs and follow the procedure in the exact step-by-step sequence.

Step 1—Select the Right Scenario

Refer to the following table to determine which scenario meets your particular installation requirements. The other scenarios that do not apply to your installation requirements can be ignored.

If you are . . .	Then go to . . .
Installing Monitor Pro v7 as a new user	Scenario 1—Installing Monitor Pro v7 (New User)
Installing Monitor Pro v7++ as a new user	Scenario 2—Installing Monitor Pro v7++ (New User)
Upgrading your existing Monitor Pro 2.1 to Monitor Pro v7	Scenario 3—Upgrading Monitor Pro 2.1 to Monitor Pro v7
Upgrading your existing Monitor Pro 2.1 to Monitor Pro v7++	Scenario 4—Upgrading Monitor Pro 2.1 to Monitor Pro v7++
Converting your existing Monitor Pro v7 to Monitor Pro v7++	Scenario 5—Converting Monitor Pro v7 to Monitor Pro v7++

Step 2—Perform Common Procedures

You need to perform the following actions prior to starting the installation scenarios described in Step 3 of this guide.

1. Print copies of all pertinent installation guides that accompany your Monitor Pro software. The documentation .pdf format files reside on the Monitor Pro v7 *Client and Server CD* and the *Monitor Pro v7++ CD*.

Note: You must have Adobe Acrobat Reader 4.05 to view the documentation. You can install Adobe Acrobat Reader 4.05 from the *Client and Server CD*.

2. Read the Monitor Pro v7 *Release Notes* and the Monitor Pro v7++ *Release Notes*.
3. Decide whether you want to install the Monitor Pro client and server on one computer or on separate computers. (Each scenario contains separate sections for installing Server/Client, Server Only, and Client Only.)

Server Only Components:

The Monitor Pro server consists of the real-time database; the run-time components, such as executable files and supporting utilities to run applications; the standard Monitor Pro tasks; application objects; and namespace.

Client Only Components:

The Monitor Pro client consists of the configuration and visualization tools: Configuration Explorer, Client Builder, Starter Project, WebClient, Application Editor, and Client Builder Clipart.

4. Have ready the serial number and configuration sequence that you find in *Exhibit A* of the Monitor Pro shipping package.
5. Make sure that your computers meet all hardware/software requirements as described in the installation guides, including the installation of Microsoft Windows 2000 or Windows NT 4.0, Service Pack 4 (or higher).
6. Make sure that you have administrator rights on the computer where you are installing, close all applications running, and have virus software turned off.

Step 3—Go to the Section that Contains Your Scenario

The following sections contain five installation scenarios for Monitor Pro. Go to the scenario that you determined in Step 1 meets your installation requirements and follow the scenario's step-by-step procedure. The other scenarios that do not apply to your installation requirements can be ignored.

Scenario Flowcharts

Each section begins with a flowchart graphic that shows a high-level process flow of the scenario procedure. Do not use this flowchart solely as your guide to installing Monitor Pro. You must follow the scenario's step-by-step instructions to access the timely and relevant advice that will help prevent installation problems.

If You Need Help

You can refer to “Appendix A” for information about Monitor Pro installation resources, including installation CDs and documentation, installation questions, and Monitor Pro patches.

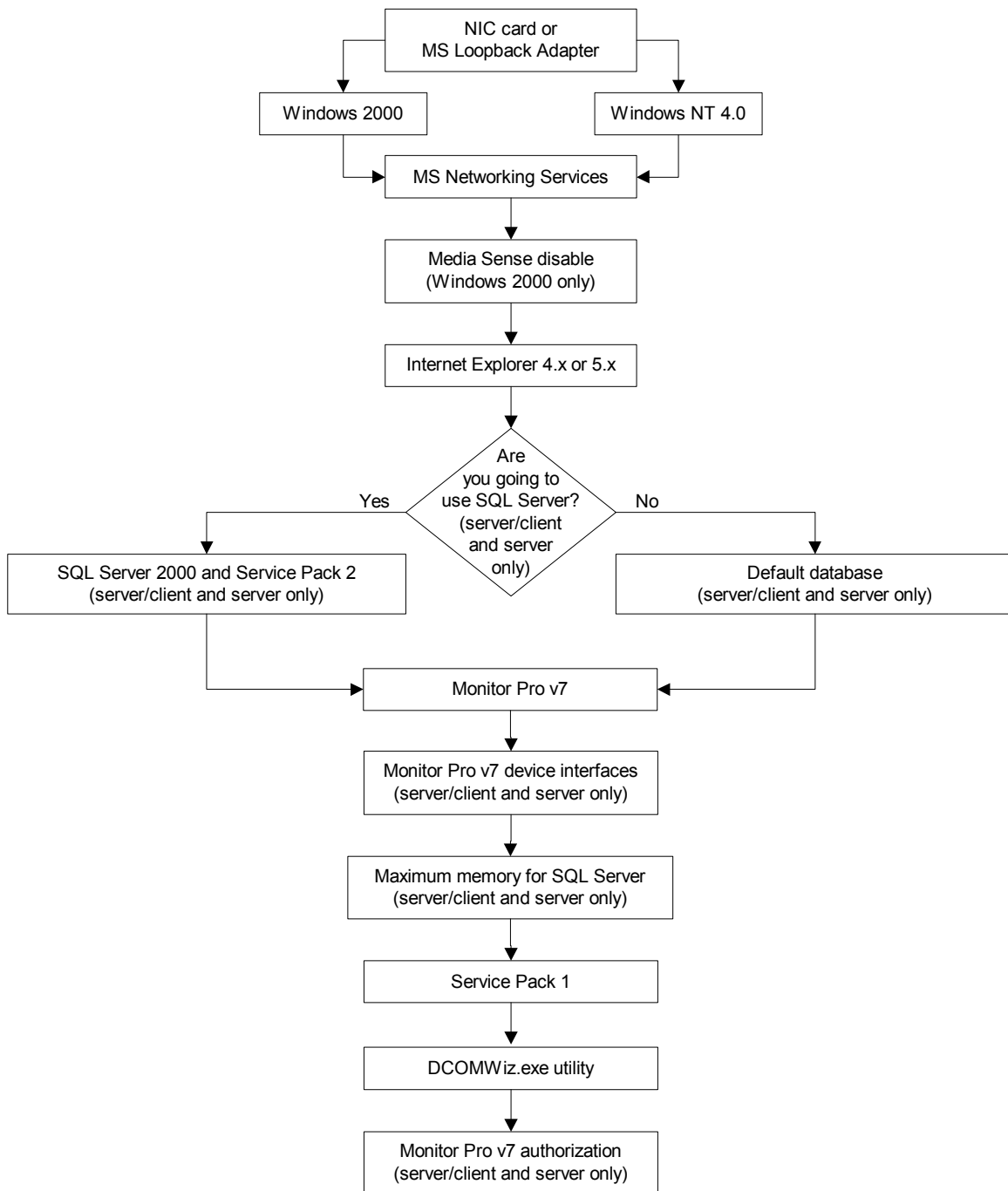
Scenario 1

Installing Monitor Pro v7

(New User)

Scenario 1—Installing Monitor Pro v7 (New User)

Installation Sequence for Scenario 1 -- Installing Monitor Pro v7 (New User)



Scenario 1—Installing Monitor Pro v7 (New User)

If you are installing Monitor Pro v7 on a single computer, follow the “Server/Client” procedure. If you are installing Monitor Pro v7 on separate computers, follow the “Server Only” and “Client Only” procedures.

Server/Client

1. Monitor Pro v7 requires that a network adapter and Microsoft networking services be installed and running even if you do not plan to connect your Monitor Pro system to a network. If you do not have a Network Interface Card (NIC) installed, you must install Microsoft’s Loopback Adapter using one of the following procedures, depending on whether you have Windows 2000 or Windows NT 4.0, Service Pack 4 (or higher).

If you have Windows 2000 . . .	If you have Windows NT 4.0 . . .
<ol style="list-style-type: none"> a. Click Start > Settings > Control Panel. b. Double-click Add/Remove Hardware. c. Click Next to start the wizard. d. Select “Add/Troubleshoot a Device” and click Next. e. Select “Add a New Device” and click Next. f. Select “No, I want to select the hardware from a list” and click Next. g. Select “Network Adapters” and click Next. h. From the Manufacturer list, select “Microsoft.” i. From the Network Adapter list, select “Microsoft Loopback Adapter” and click Next. j. Click Next. k. Click Finish. 	<ol style="list-style-type: none"> a. Click Start > Settings > Control Panel. b. Click the Network icon. c. Click the Adapters tab. d. Click the Add button. e. From the Select Network Adapter window, select “MS Loopback Adapter.” f. Click OK. <p>Note: Some systems may request that you insert the <i>Windows NT 4.0 CD</i> so the system can access the appropriate files.</p>

2. Make sure the following Microsoft Networking Services are installed and running properly:
 - ✓ TCP/IP installed and bound to a Network Interface Card (NIC) (or Microsoft Loopback Adapter if the computer is running standalone)
 - ✓ Computer Browser
 - ✓ NetBIOS

Scenario 1—Installing Monitor Pro v7 (New User)

- ✓ Workstation services
 - ✓ Server services
 - ✓ Remote Procedure Call (RPC) service
3. If you are installing Monitor Pro on Windows 2000, Schneider Automation recommends that you disable Media Sense to prevent the network services from being disabled when you are not connected to a network.

Note: If you are installing Monitor Pro on Windows NT, you can skip this step.

Warning: Using Registry Editor incorrectly can cause serious problems that may require you to reinstall your operating system. Microsoft does not guarantee that problems resulting from the incorrect use of Registry Editor can be solved. Use Registry Editor at your own risk.

- ✓ Use Registry Editor (regedt32.exe) to view the following key in the registry:
HKEY_LOCAL_MACHINE\System\CurrentControlSet\Services\Tcpip\Parameters
- ✓ Add the following registry value:
Value Name: DisableDHCPMediaSense
Data Type: REG_DWORD
Data: 1 (True)

Note: For information about Media Sense, refer to the Microsoft Support Article Q239924 (<http://support.microsoft.com>).

4. Install Internet Explorer 4.x or 5.x (IE 6.x is not compatible).
5. If you plan to use SQL Server 2000 as your default database, install SQL Server 2000 from the appropriate *Microsoft SQL Server 2000 CD* (see below). (Refer to “Appendix A” of the *FactoryLink 7.0 Installation Guide* for detailed installation instructions.)
- ✓ Depending on your platform, install SQL Server from the appropriate CD as follows:
 - Microsoft Windows NT Workstation: Install SQL Server 2000 from the *Microsoft SQL Server 2000 Personal Edition CD*.
 - Microsoft Windows NT Server: Install SQL Server 2000 from the *Microsoft SQL Server 2000 Standard Edition CD*.
 - Microsoft Windows 2000 Professional: Install SQL Server 2000 from the *Microsoft SQL Server 2000 Personal Edition CD*.
 - Microsoft Windows 2000 Server or Advanced Server: Install SQL Server 2000 from the *Microsoft SQL Server 2000 Standard Edition CD*.
 - ✓ SQL Server does not have to be installed on the same computer as Monitor Pro.

- ✓ Schneider Automation recommends SQL Server as the primary database. You also need the SQL Server to use the Starter Application that is automatically installed with the Monitor Pro v7 software. (The Monitor Pro installation will install the Starter Application configured for Microsoft SQL Server or for dBase IV. If you plan to use any database other than SQL Server or dBase IV, such as Oracle, you should select the “dBase IV” option during the system software installation in the next step.)
 - ✓ Schneider Automation requires that you install SQL Server 2000 Service Pack 2, which is available as part of the Monitor Pro installation CD set.
 - ✓ If you already have SQL Server 2000 and SQL Server 2000 Service Pack 2 installed and available for Monitor Pro, you can skip this step.
6. Install the Monitor Pro v7 system software (**server and client components**) from the *Client and Server CD*. (Refer to “Chapter 2” in the *FactoryLink 7.0 Installation Guide* for detailed instructions.)
- ✓ When the **License Configuration** window appears, you enter the serial number and configuration sequence from *Exhibit A* of your Monitor Pro v7 shipping package. Be sure to write down the registration code that is generated. You will use this code later when you contact Schneider Automation to authorize Monitor Pro. Schneider Automation recommends that you wait to authorize Monitor Pro until the system has been installed and tested. You have ten days to authorize Monitor Pro after installation.
 - ✓ The installation will give you a choice of installing the Starter Application configured for Microsoft SQL Server or for dBase IV. If you plan to use any database other than SQL Server or dBase IV, such as Oracle, you should select the “dBase IV” option.
 - ✓ Client Builder is installed automatically. (Only the full Client Builder project is installed; no compressed file is provided as an archive. It is recommended that you save the project as an archive (.cba) after installation and before working in the project. You can save the project in two ways: (1) using the FVArchive.exe utility in the Schneider Automation\Monitor Pro\Client Builder\Program directory or (2) in Client Builder, you can use **Tools > Application > Save\Restore Project**.)
 - ✓ There are two reboots during installation: The installation preps the system by installing some needed system files and then does a reboot very early in the install. Then the installation does another reboot after it finishes installing the system prior to installation of the device interfaces. Do not eject the installation CD between the reboots.
7. Install the Monitor Pro v7 device interfaces from the *Device Interfaces and Value-Added Products CD*. (Refer to “Chapter 4” in the *FactoryLink 7.0 Installation Guide* for detailed instructions.)
- Note:** You will skip this step if you de-selected the device interfaces option during the system software installation in the previous step.
8. After you install Monitor Pro v7 and Microsoft SQL Server 2000, set up a maximum memory limit on the SQL Server. The setup ensures that Monitor Pro has adequate memory

Scenario 1—Installing Monitor Pro v7 (New User)

resources. (Refer to the “Setting up Memory Size for Microsoft SQL Server 2000” procedure in “Chapter 6” of the *FactoryLink 7.0 Installation Guide* for detailed instructions.)

9. Install Service Pack 1 from the Monitor Pro v7 *Service Pack 1 CD*. (Refer to the *Getting Started with Monitor Pro v7 Service Pack 1 Including Run-Time Client* document for detailed instructions.)
10. Run the DCOMWiz.exe utility from the Schneider Automation\Monitor Pro\FactoryLink\Bin directory on all server and client computers. This utility provides a quick way for you to ensure that you have the proper DCOM settings for running Monitor Pro.

Note: Schneider Automation recommends that you re-run the DCOMWiz.exe utility after any system update, such as service packs and patches.

11. Authorize Monitor Pro v7 using the registration code that was generated on the **License Configuration** window in Step 6. (Refer to “Chapter 5” in the *FactoryLink 7.0 Installation Guide* for detailed instructions.)

Note: Schneider Automation recommends that you wait to authorize Monitor Pro until the system has been installed and tested. You have ten days to authorize Monitor Pro after installation.

Server Only

When you are installing the server and client on separate computers, you install the device interfaces and Starter Application on the server machine only.

1. Monitor Pro v7 requires that a network adapter and Microsoft networking services be installed and running even if you do not plan to connect your Monitor Pro system to a network. If you do not have a Network Interface Card (NIC) installed, you must install Microsoft’s Loopback Adapter using one of the following procedures, depending on whether you have Windows 2000 or Windows NT 4.0, Service Pack 4 (or higher).

If you have Windows 2000 . . .	If you have Windows NT 4.0 . . .
<ol style="list-style-type: none"> a. Click Start > Settings > Control Panel. b. Double-click Add/Remove Hardware. c. Click Next to start the wizard. d. Select “Add/Troubleshoot a Device” and click Next. e. Select “Add a New Device” and click Next. f. Select “No, I want to select the hardware from a list” and click Next. g. Select “Network Adapters” and click Next. h. From the Manufacturer list, select “Microsoft.” i. From the Network Adapter list, select “Microsoft Loopback Adapter” and click Next. j. Click Next. k. Click Finish. 	<ol style="list-style-type: none"> a. Click Start > Settings > Control Panel. b. Click the Network icon. c. Click the Adapters tab. d. Click the Add button. e. From the Select Network Adapter window, select “MS Loopback Adapter.” f. Click OK. <p>Note: Some systems may request that you insert the <i>Windows NT 4.0 CD</i> so the system can access the appropriate files.</p>

2. Make sure the following Microsoft Networking Services are installed and running properly:
 - ✓ TCP/IP installed and bound to a Network Interface Card (NIC) (or Microsoft Loopback Adapter if the computer is running standalone)
 - ✓ Computer Browser
 - ✓ NetBIOS
 - ✓ Workstation services
 - ✓ Server services
 - ✓ Remote Procedure Call (RPC) service

Scenario 1—Installing Monitor Pro v7 (New User)

If you are installing Monitor Pro on Windows 2000, Schneider Automation recommends that you disable Media Sense to prevent the network services from being disabled when you are not connected to a network.

Note: If you are installing Monitor Pro on Windows NT, you can skip this step.

Warning: Using Registry Editor incorrectly can cause serious problems that may require you to reinstall your operating system. Microsoft does not guarantee that problems resulting from the incorrect use of Registry Editor can be solved. Use Registry Editor at your own risk.

✓ Use Registry Editor (regedt32.exe) to view the following key in the registry:

HKEY_LOCAL_MACHINE\System\CurrentControlSet\Services\Tcpip\Parameters

✓ Add the following registry value:

Value Name: DisableDHCPMediaSense

Data Type: REG_DWORD

Data: 1 (True)

Note: For information about Media Sense, refer to the Microsoft Support Article Q239924 (<http://support.microsoft.com>).

3. Install Internet Explorer 4.x or 5.x (IE 6.x is not compatible).
4. If you plan to use SQL Server 2000 as your default database, install SQL Server 2000 from the appropriate *Microsoft SQL Server 2000 CD* (see below). (Refer to “Appendix A” of the *FactoryLink 7.0 Installation Guide* for detailed installation instructions.)
 - ✓ Depending on your platform, install SQL Server from the appropriate CD as follows:
 - Microsoft Windows NT Workstation: Install SQL Server 2000 from the *Microsoft SQL Server 2000 Personal Edition CD*.
 - Microsoft Windows NT Server: Install SQL Server 2000 from the *Microsoft SQL Server 2000 Standard Edition CD*.
 - Microsoft Windows 2000 Professional: Install SQL Server 2000 from the *Microsoft SQL Server 2000 Personal Edition CD*.
 - Microsoft Windows 2000 Server or Advanced Server: Install SQL Server 2000 from the *Microsoft SQL Server 2000 Standard Edition CD*.
 - ✓ SQL Server does not have to be installed on the same computer as Monitor Pro.
 - ✓ Schneider Automation recommends SQL Server as the primary database. You also need the SQL Server to use the Starter Application that is automatically installed with the Monitor Pro v7 software. (The Monitor Pro installation will install the Starter Application configured for Microsoft SQL Server or for dBase IV. If you plan to use any

database other than SQL Server or dBase IV, such as Oracle, you should select the “dBase IV” option during the system software installation in the next step.)

- ✓ Schneider Automation requires that you install SQL Server 2000 Service Pack 2, which is available as part of the Monitor Pro installation CD set.
 - ✓ If you already have SQL Server 2000 and SQL Server 2000 Service Pack 2 installed and available for Monitor Pro, you can skip this step.
5. Install the Monitor Pro v7 system software (**server components**) from the *Client and Server CD*. (Refer to “Chapter 2” in the *FactoryLink 7.0 Installation Guide* for detailed instructions.)
- ✓ When the **License Configuration** window appears, you enter the serial number and configuration sequence from *Exhibit A* of your Monitor Pro v7 shipping package. Be sure to write down the registration code that is generated. You will use this code later when you contact Schneider Automation to authorize Monitor Pro. Schneider Automation recommends that you wait to authorize Monitor Pro until the system has been installed and tested. You have ten days to authorize Monitor Pro after installation.
 - ✓ The installation will give you a choice of installing the Starter Application configured for Microsoft SQL Server or for dBase IV. If you plan to use any database other than SQL Server or dBase IV, such as Oracle, you should select the “dBase IV” option.
 - ✓ There are two reboots during installation: The installation preps the system by installing some needed system files and then does a reboot very early in the install. Then the installation does another reboot after it finishes installing the system prior to installation of the device interfaces. Do not eject the installation CD between the reboots.
6. Install the Monitor Pro v7 device interfaces from the *Device Interfaces and Value-Added Products CD*. (Refer to “Chapter 4” in the *FactoryLink 7.0 Installation Guide* for detailed instructions.)
- Note:** You will skip this step if you de-selected the device interfaces option during the system software installation in the previous step.
7. After you install Monitor Pro v7 and Microsoft SQL Server 2000, set up a maximum memory limit on the SQL Server to ensure that Monitor Pro has adequate memory resources. (Refer to the “Setting up Memory Size for Microsoft SQL Server 2000” procedure in “Chapter 6” of the *FactoryLink 7.0 Installation Guide* for detailed instructions.)
8. Install Service Pack 1 from the Monitor Pro v7 *Service Pack 1 CD*. (Refer to *Getting Started with Monitor Pro v7 Service Pack 1 Including Run-Time Client* for detailed instructions.)
9. Run the DCOMWiz.exe utility from the Schneider Automation\Monitor Pro\FactoryLink\Bin directory on all server and client computers. This utility provides a quick way for you to ensure that you have the proper DCOM settings for running Monitor Pro.

Scenario 1—Installing Monitor Pro v7 (New User)

Note: Schneider Automation recommends that you re-run the DCOMWiz.exe utility after any system update, such as service packs and patches.

10. Authorize Monitor Pro v7 using the registration code that was generated on the **License Configuration** window in Step 6. (Refer to “Chapter 5” in the *FactoryLink 7.0 Installation Guide* for detailed instructions.)

Note: Schneider Automation recommends that you wait to authorize Monitor Pro until the system has been installed and tested. You have ten days to authorize Monitor Pro after installation.

Client Only

1. Monitor Pro v7 requires that a network adapter and Microsoft networking services be installed and running even if you do not plan to connect your Monitor Pro system to a network. If you do not have a Network Interface Card (NIC) installed, you must install Microsoft’s Loopback Adapter using one of the following procedures, depending on whether you have Windows 2000 or Windows NT 4.0, Service Pack 4 (or higher).

If you have Windows 2000 . . .	If you have Windows NT 4.0 . . .
<ol style="list-style-type: none"> a. Click Start > Settings > Control Panel. b. Double-click Add/Remove Hardware. c. Click Next to start the wizard. d. Select “Add/Troubleshoot a Device” and click Next. e. Select “Add a New Device” and click Next. f. Select “No, I want to select the hardware from a list” and click Next. g. Select “Network Adapters” and click Next. h. From the Manufacturer list, select “Microsoft.” i. From the Network Adapter list, select “Microsoft Loopback Adapter” and click Next. j. Click Next. k. Click Finish. 	<ol style="list-style-type: none"> a. Click Start > Settings > Control Panel. b. Click the Network icon. c. Click the Adapters tab. d. Click the Add button. e. From the Select Network Adapter window, select “MS Loopback Adapter.” f. Click OK. <p>Note: Some systems may request that you insert the <i>Windows NT 4.0 CD</i> so the system can access the appropriate files.</p>

2. Make sure the following Microsoft Networking Services are installed and running properly:
 - ✓ TCP/IP installed and bound to a Network Interface Card (NIC) (or Microsoft Loopback Adapter if the computer is running standalone)
 - ✓ Computer Browser
 - ✓ NetBIOS
 - ✓ Workstation services
 - ✓ Server services
 - ✓ Remote Procedure Call (RPC) service

If you are installing Monitor Pro on Windows 2000, Schneider Automation recommends that you disable Media Sense to prevent the network services from being disabled when you are not connected to a network.

Scenario 1—Installing Monitor Pro v7 (New User)

Note: If you are installing Monitor Pro on Windows NT, you can skip this step.

Warning: Using Registry Editor incorrectly can cause serious problems that may require you to reinstall your operating system. Microsoft does not guarantee that problems resulting from the incorrect use of Registry Editor can be solved. Use Registry Editor at your own risk.

- ✓ Use Registry Editor (regedt32.exe) to view the following key in the registry:

HKEY_LOCAL_MACHINE\System\CurrentControlSet\Services\Tcpip\Parameters

- ✓ Add the following registry value:

Value Name: DisableDHCPMediaSense

Data Type: REG_DWORD

Data: 1 (True)

Note: For information about Media Sense, refer to the Microsoft Support Article Q239924 (<http://support.microsoft.com>).

3. Install Internet Explorer 4.x or 5.x (IE 6.x is not compatible).
4. Install the Monitor Pro v7 system software (**client components**) from the *Client and Server CD*. (Refer to “Chapter 2” in the *FactoryLink 7.0 Installation Guide* for detailed instructions.)
 - ✓ When the **License Configuration** window appears, enter the same serial number and configuration sequence that you entered in the same window during the Server Only installation. (This is the serial number and configuration sequence from *Exhibit A* of your Monitor Pro v7 shipping package.)
 - ✓ When the **Monitor Pro Licensing Utility** window appears, enter the host name or IP address of the server to which the client will point.
 - ✓ Client Builder is installed automatically. (Only the full Client Builder project is installed; no compressed file is provided as an archive. Schneider Automation recommends that you save the project as an archive (.cba) after installation and before working in the project. You can save the project in two ways: (1) using the FVArchive.exe utility in the Schneider Automation\Monitor Pro\Client Builder\Program directory or (2) in Client Builder, you can use **Tools > Application > Save\Restore Project**.)
 - ✓ There are two reboots during installation: The installation preps the system by installing some needed system files and then does a reboot very early in the install. Then the installation does another reboot after it finishes installing the system prior to installation of the device interfaces. Do not eject the installation CD between the reboots.
5. Install Service Pack 1 from the Monitor Pro v7 *Service Pack 1 CD*. (Refer to the *Getting Started with Monitor Pro v7 Service Pack 1 Including Run-Time Client* document for detailed instructions.)

6. Run the DCOMWiz.exe utility from the Schneider Automation\Monitor Pro\FactoryLink\Bin directory on all server and client computers. This utility provides a quick way for you to ensure that you have the proper DCOM settings for running Monitor Pro.

Note: Schneider Automation recommends that you re-run the DCOMWiz.exe utility after any system update, such as service packs and patches.

WebClient

Although Client Builder is automatically installed with Monitor Pro v7, if you wish, you can use the WebClient product instead of using Client Builder. WebClient gives you the capability to remotely monitor and control Monitor Pro applications using ECS graphics. WebClient can be run standalone or dropped into an ActiveX container such as Internet Explorer or Client Builder. The WebClient server tasks are installed with the Monitor Pro base system. You can install the client-side components of WebClient from a distribution CD or over a network.

Refer to the *FactoryLink 7.0 WebClient User Guide* for information about using WebClient and for detailed installation instructions.

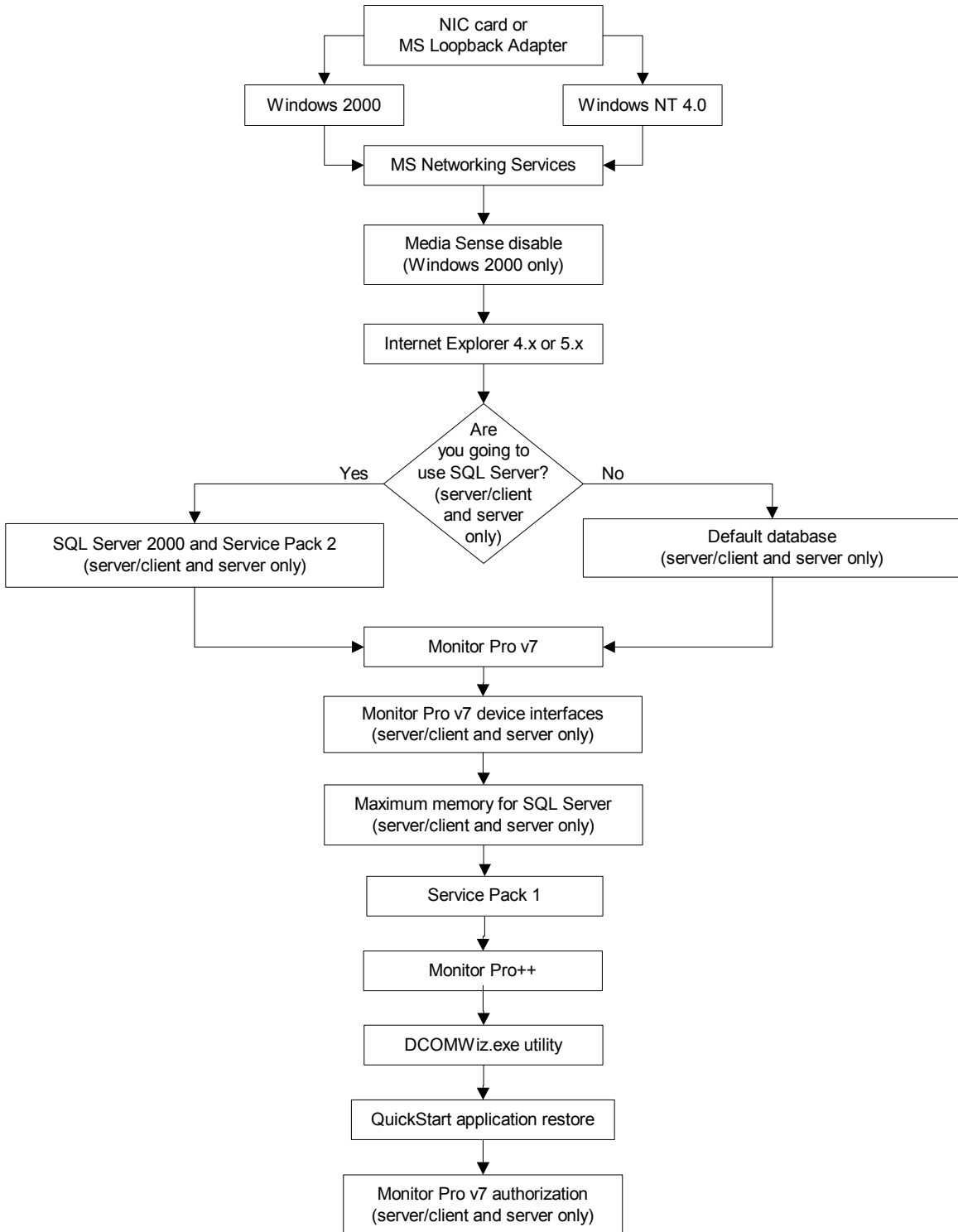
Scenario 1—Installing Monitor Pro v7 (New User)

Scenario 2

Installing Monitor Pro v7++ (New User)

Scenario 2—Installing Monitor Pro v7++ (New User)

Installation Sequence for Scenario 2 -- Installing Monitor Pro++ (New User)



Scenario 2—Installing Monitor Pro v7++ (New User)

If you are installing Monitor Pro v7++ on a single computer, follow the “Server/Client” procedure. If you are installing Monitor Pro v7++ on separate computers, follow the “Server Only” and “Client Only” procedures.

Server/Client

1. Monitor Pro v7 requires that a network adapter and Microsoft networking services be installed and running even if you do not plan to connect your Monitor Pro system to a network. If you do not have a Network Interface Card (NIC) installed, you must install Microsoft’s Loopback Adapter using one of the following procedures, depending on whether you have Windows 2000 or Windows NT 4.0, Service Pack 4 (or higher).

If you have Windows 2000 . . .	If you have Windows NT 4.0 . . .
<ol style="list-style-type: none"> a. Click Start > Settings > Control Panel. b. Double-click Add/Remove Hardware. c. Click Next to start the wizard. d. Select “Add/Troubleshoot a Device” and click Next. e. Select “Add a New Device” and click Next. f. Select “No, I want to select the hardware from a list” and click Next. g. Select “Network Adapters” and click Next. h. From the Manufacturer list, select “Microsoft.” i. From the Network Adapter list, select “Microsoft Loopback Adapter” and click Next. j. Click Next. k. Click Finish. 	<ol style="list-style-type: none"> a. Click Start > Settings > Control Panel. b. Click the Network icon. c. Click the Adapters tab. d. Click the Add button. e. From the Select Network Adapter window, select “MS Loopback Adapter.” f. Click OK. <p>Note: Some systems may request that you insert the <i>Windows NT 4.0 CD</i> so the system can access the appropriate files.</p>

2. Make sure the following Microsoft Networking Services are installed and running properly:
 - ✓ TCP/IP installed and bound to a Network Interface Card (NIC) (or Microsoft Loopback Adapter if the computer is running standalone)
 - ✓ Computer Browser
 - ✓ NetBIOS
 - ✓ Workstation services

Scenario 2—Installing Monitor Pro v7++ (New User)

- ✓ Server services
 - ✓ Remote Procedure Call (RPC) service
3. If you are installing Monitor Pro on Windows 2000, Schneider Automation recommends that you disable Media Sense to prevent the network services from being disabled when you are not connected to a network.

Note: If you are installing Monitor Pro on Windows NT, you can skip this step.

Warning: Using Registry Editor incorrectly can cause serious problems that may require you to reinstall your operating system. Microsoft does not guarantee that problems resulting from the incorrect use of Registry Editor can be solved. Use Registry Editor at your own risk.

- ✓ Use Registry Editor (regedt32.exe) to view the following key in the registry:
HKEY_LOCAL_MACHINE\System\CurrentControlSet\Services\Tcpip\Parameters
- ✓ Add the following registry value:
Value Name: DisableDHCPMediaSense
Data Type: REG_DWORD
Data: 1 (True)

Note: For information about Media Sense, refer to the Microsoft Support Article Q239924 (<http://support.microsoft.com>).

4. Install Internet Explorer 4.x or 5.x (IE 6.x is not compatible).
5. If you plan to use SQL Server 2000 as your default database, install SQL Server 2000 from the appropriate *Microsoft SQL Server 2000 CD* (see below). (Refer to “Appendix A” of the *FactoryLink 7.0 Installation Guide* for detailed installation instructions.)
- ✓ Depending on your platform, install SQL Server from the appropriate CD as follows:
 - Microsoft Windows NT Workstation: Install SQL Server 2000 from the *Microsoft SQL Server 2000 Personal Edition CD*.
 - Microsoft Windows NT Server: Install SQL Server 2000 from the *Microsoft SQL Server 2000 Standard Edition CD*.
 - Microsoft Windows 2000 Professional: Install SQL Server 2000 from the *Microsoft SQL Server 2000 Personal Edition CD*.
 - Microsoft Windows 2000 Server or Advanced Server: Install SQL Server 2000 from the *Microsoft SQL Server 2000 Standard Edition CD*.
 - ✓ SQL Server does not have to be installed on the same computer as Monitor Pro.
 - ✓ Schneider Automation recommends SQL Server as the primary database. You also need the SQL Server to use the Starter Application that is automatically installed with the

Monitor Pro v7 software. (The Monitor Pro installation will install the Starter Application configured for Microsoft SQL Server or for dBase IV. If you plan to use any database other than SQL Server or dBase IV, such as Oracle, you should select the “dBase IV” option during the system software installation in the next step.)

- ✓ Schneider Automation requires that you install SQL Server 2000 Service Pack 2, which is available as part of the Monitor Pro installation CD set.
 - ✓ If you already have SQL Server 2000 and SQL Server 2000 Service Pack 2 installed and available for Monitor Pro, you can skip this step.
6. Install the Monitor Pro v7 system software (**server and client components**) from the *Client and Server CD*. (Refer to “Chapter 2” in the *FactoryLink 7.0 Installation Guide* for detailed instructions.)
- ✓ When the **License Configuration** window appears, you enter the serial number and configuration sequence from *Exhibit A* of your Monitor Pro v7 shipping package. Be sure to write down the registration code that is generated. You will use this code later when you contact Schneider Automation to authorize Monitor Pro. Schneider Automation recommends that you wait to authorize Monitor Pro until the system has been installed and tested. You have ten days to authorize Monitor Pro after installation.
 - ✓ The installation will give you a choice of installing the Starter Application configured for Microsoft SQL Server or for dBase IV. If you plan to use any database other than SQL Server or dBase IV, such as Oracle, you should select the “dBase IV” option.
 - ✓ Client Builder is installed automatically. (Only the full Client Builder project is installed; no compressed file is provided as an archive. Schneider Automation recommends that you save the project as an archive (.cba) after installation and before working in the project. You can save the project in two ways: (1) using the FVArchive.exe utility in the Schneider Automation\Monitor Pro\Client Builder\Program directory or (2) in Client Builder, you can use **Tools > Application > Save\Restore Project**.)
 - ✓ There are two reboots during installation: The installation preps the system by installing some needed system files and then does a reboot very early in the install. Then the installation does another reboot after it finishes installing the system prior to installation of the device interfaces. Do not eject the installation CD between the reboots.
7. Install the Monitor Pro v7 device interfaces from the *Device Interfaces and Value-Added Products CD*. (Refer to “Chapter 4” in the *FactoryLink 7.0 Installation Guide* for detailed instructions.)

Note: You will skip this step if you de-selected the device interfaces option during the system software installation in the previous step.

8. After you install Monitor Pro v7 and Microsoft SQL Server 2000, set up a maximum memory limit on the SQL Server. The setup ensures that Monitor Pro has adequate memory resources. (Refer to the “Setting up Memory Size for Microsoft SQL Server 2000” procedure in “Chapter 6” of the *FactoryLink 7.0 Installation Guide* for detailed instructions.)

Scenario 2—Installing Monitor Pro v7++ (New User)

9. Install Service Pack 1 from the Monitor Pro v7 *Service Pack 1 CD*. (Refer to the *Getting Started with Monitor Pro v7 Service Pack 1 Including Run-Time Client* document for detailed instructions.)
10. Install the Monitor Pro v7++ system software from the *Monitor Pro v7++ CD*. (Refer to “Chapter 3” in the *FactoryLink++ User Guide* for detailed instructions.)

Caution: Do not install any of the value-added products (VAPs) from the *Device Interfaces and Value-Added Products CD* after installing Monitor Pro v7++ or the VAPs will overwrite the Monitor Pro v7++ files.

11. Run the DCOMWiz.exe utility from the Schneider Automation\Monitor Pro\FactoryLink\Bin directory on all server and client computers. This utility provides a quick way for you to ensure that you have the proper DCOM settings for running Monitor Pro.

Note: Schneider Automation recommends that you re-run the DCOMWiz.exe utility after any system update, such as service packs and patches.

12. Restore the QuickStart Server application. (Refer to “Chapter 3” in the *FactoryLink++ User Guide* for detailed instructions.)
13. Restore the QuickStart Client application. (Refer to “Chapter 3” in the *FactoryLink++ User Guide* for detailed instructions.)
14. Authorize Monitor Pro v7 using the registration code that was generated on the **License Configuration** window in Step 6. (Refer to “Chapter 5” in the *FactoryLink 7.0 Installation Guide* for detailed instructions.)

Note: Schneider Automation recommends that you wait to authorize Monitor Pro until the system has been installed and tested. You have ten days to authorize Monitor Pro after installation.

Server Only

When you are installing the server and client on separate computers, you install the device interfaces and Starter Application on the server machine only.

1. Monitor Pro v7 requires that a network adapter and Microsoft networking services be installed and running even if you do not plan to connect your Monitor Pro system to a network. If you do not have a Network Interface Card (NIC) installed, you must install Microsoft’s Loopback Adapter using one of the following procedures, depending on whether you have Windows 2000 or Windows NT 4.0, Service Pack 4 (or higher).

If you have Windows 2000 . . .	If you have Windows NT 4.0 . . .
<ol style="list-style-type: none"> a. Click Start > Settings > Control Panel. b. Double-click Add/Remove Hardware. c. Click Next to start the wizard. d. Select “Add/Troubleshoot a Device” and click Next. e. Select “Add a New Device” and click Next. f. Select “No, I want to select the hardware from a list” and click Next. g. Select “Network Adapters” and click Next. h. From the Manufacturer list, select “Microsoft.” i. From the Network Adapter list, select “Microsoft Loopback Adapter” and click Next. j. Click Next. k. Click Finish. 	<ol style="list-style-type: none"> a. Click Start > Settings > Control Panel. b. Click the Network icon. c. Click the Adapters tab. d. Click the Add button. e. From the Select Network Adapter window, select “MS Loopback Adapter.” f. Click OK. <p>Note: Some systems may request that you insert the <i>Windows NT 4.0 CD</i> so the system can access the appropriate files.</p>

2. Make sure the following Microsoft Networking Services are installed and running properly:
 - ✓ TCP/IP installed and bound to a Network Interface Card (NIC) (or Microsoft Loopback Adapter if the computer is running standalone)
 - ✓ Computer Browser
 - ✓ NetBIOS
 - ✓ Workstation services
 - ✓ Server services
 - ✓ Remote Procedure Call (RPC) service

Scenario 2—Installing Monitor Pro v7++ (New User)

3. If you are installing Monitor Pro on Windows 2000, Schneider Automation recommends that you disable Media Sense to prevent the network services from being disabled when you are not connected to a network.

Note: If you are installing Monitor Pro on Windows NT, you can skip this step.

Warning: Using Registry Editor incorrectly can cause serious problems that may require you to reinstall your operating system. Microsoft does not guarantee that problems resulting from the incorrect use of Registry Editor can be solved. Use Registry Editor at your own risk.

- ✓ Use Registry Editor (regedt32.exe) to view the following key in the registry:

HKEY_LOCAL_MACHINE\System\CurrentControlSet\Services\Tcpip\Parameters

- ✓ Add the following registry value:

Value Name: DisableDHCPMediaSense

Data Type: REG_DWORD

Data: 1 (True)

Note: For information about Media Sense, refer to the Microsoft Support Article Q239924 (<http://support.microsoft.com>).

4. Install Internet Explorer 4.x or 5.x (IE 6.x is not compatible).
5. If you plan to use SQL Server 2000 as your default database, install SQL Server 2000 from the appropriate *Microsoft SQL Server 2000 CD* (see below). (Refer to “Appendix A” of the *FactoryLink 7.0 Installation Guide* for detailed installation instructions.)
 - ✓ Depending on your platform, install SQL Server from the appropriate CD as follows:
 - Microsoft Windows NT Workstation: Install SQL Server 2000 from the *Microsoft SQL Server 2000 Personal Edition CD*.
 - Microsoft Windows NT Server: Install SQL Server 2000 from the *Microsoft SQL Server 2000 Standard Edition CD*.
 - Microsoft Windows 2000 Professional: Install SQL Server 2000 from the *Microsoft SQL Server 2000 Personal Edition CD*.
 - Microsoft Windows 2000 Server or Advanced Server: Install SQL Server 2000 from the *Microsoft SQL Server 2000 Standard Edition CD*.
 - ✓ SQL Server does not have to be installed on the same computer as Monitor Pro.
 - ✓ Schneider Automation recommends SQL Server as the primary database. You also need the SQL Server to use the Starter Application that is automatically installed with the Monitor Pro v7 software. (The Monitor Pro installation will install the Starter Application configured for Microsoft SQL Server or for dBase IV. If you plan to use any

database other than SQL Server or dBase IV, such as Oracle, you should select the “dBase IV” option during the system software installation in the next step.)

- ✓ Schneider Automation requires that you install SQL Server 2000 Service Pack 2, which is available as part of the Monitor Pro installation CD set.
 - ✓ If you already have SQL Server 2000 and SQL Server 2000 Service Pack 2 installed and available for Monitor Pro, you can skip this step.
6. Install the Monitor Pro v7 system software (**server components**) from the *Client and Server CD*. (Refer to “Chapter 2” in the *FactoryLink 7.0 Installation Guide* for detailed instructions.)
- ✓ When the **License Configuration** window appears, you enter the serial number and configuration sequence from *Exhibit A* of your Monitor Pro v7 shipping package. Be sure to write down the registration code that is generated. You will use this code later when you contact Schneider Automation to authorize Monitor Pro. Schneider Automation recommends that you wait to authorize Monitor Pro until the system has been installed and tested. You have ten days to authorize Monitor Pro after installation.
 - ✓ The installation will give you a choice of installing the Starter Application configured for Microsoft SQL Server or for dBase IV. If you plan to use any database other than SQL Server or dBase IV, such as Oracle, you should select the “dBase IV” option.
 - ✓ There are two reboots during installation: The installation preps the system by installing some needed system files and then does a reboot very early in the install. Then the installation does another reboot after it finishes installing the system prior to installation of the device interfaces. Do not eject the installation CD between the reboots.
7. Install the Monitor Pro v7 device interfaces from the *Device Interfaces and Value-Added Products CD*. (Refer to “Chapter 4” in the *FactoryLink 7.0 Installation Guide* for detailed instructions.)
- Note:** You will skip this step if you de-selected the device interfaces option during the system software installation in the previous step.
8. After you install Monitor Pro v7 and Microsoft SQL Server 2000, set up a maximum memory limit on the SQL Server. The setup ensures that Monitor Pro has adequate memory resources. (Refer to the “Setting up Memory Size for Microsoft SQL Server 2000” procedure in “Chapter 6” of the *FactoryLink 7.0 Installation Guide* for detailed instructions.)
9. Install Service Pack 1 from the Monitor Pro v7 *Service Pack 1 CD*. (Refer to the *Getting Started with Monitor Pro v7 Service Pack 1 Including Run-Time Client* document for detailed instructions.)
10. Install the Monitor Pro v7++ system software from the *Monitor Pro v7++ CD*. (Refer to “Chapter 3” in the *FactoryLink++ User Guide* for detailed instructions.)

Caution: Do not install any of the value-added products (VAPs) from the *Device Interfaces*

Scenario 2—Installing Monitor Pro v7++ (New User)

and *Value-Added Products CD* after installing Monitor Pro v7++ or the VAPs will overwrite the Monitor Pro v7++ files.

11. Run the DCOMWiz.exe utility from the Schneider Automation\Monitor Pro\FactoryLink\Bin directory on all server and client computers. This utility provides a quick way for you to ensure that you have the proper DCOM settings for running Monitor Pro.

Note: Schneider Automation recommends that you re-run the DCOMWiz.exe utility after any system update, such as service packs and patches.

12. Restore the QuickStart Server application. (Refer to “Chapter 3” in the *FactoryLink++ User Guide* for detailed instructions.)
13. Authorize Monitor Pro v7 using the registration code that was generated on the **License Configuration** window in Step 6. (Refer to “Chapter 5” in the *FactoryLink 7.0 Installation Guide* for detailed instructions.)

Note: Schneider Automation recommends that you wait to authorize Monitor Pro until the system has been installed and tested. You have ten days to authorize Monitor Pro after installation.

Client Only

1. Monitor Pro v7 requires that a network adapter and Microsoft networking services be installed and running even if you do not plan to connect your Monitor Pro system to a network. If you do not have a Network Interface Card (NIC) installed, you must install Microsoft’s Loopback Adapter using one of the following procedures, depending on whether you have Windows 2000 or Windows NT 4.0, Service Pack 4 (or higher).

If you have Windows 2000 . . .	If you have Windows NT 4.0 . . .
<ol style="list-style-type: none"> a. Click Start > Settings > Control Panel. b. Double-click Add/Remove Hardware. c. Click Next to start the wizard. d. Select “Add/Troubleshoot a Device” and click Next. e. Select “Add a New Device” and click Next. f. Select “No, I want to select the hardware from a list” and click Next. g. Select “Network Adapters” and click Next. h. From the Manufacturer list, select “Microsoft.” i. From the Network Adapter list, select “Microsoft Loopback Adapter” and click Next. j. Click Next. k. Click Finish. 	<ol style="list-style-type: none"> a. Click Start > Settings > Control Panel. b. Click the Network icon. c. Click the Adapters tab. d. Click the Add button. e. From the Select Network Adapter window, select “MS Loopback Adapter.” f. Click OK. <p>Note: Some systems may request that you insert the <i>Windows NT 4.0 CD</i> so the system can access the appropriate files.</p>

2. Make sure the following Microsoft Networking Services are installed and running properly:
 - ✓ TCP/IP installed and bound to a Network Interface Card (NIC) (or Microsoft Loopback Adapter if the computer is running standalone)
 - ✓ Computer Browser
 - ✓ NetBIOS
 - ✓ Workstation services
 - ✓ Server services
 - ✓ Remote Procedure Call (RPC) service

Scenario 2—Installing Monitor Pro v7++ (New User)

3. If you are installing Monitor Pro on Windows 2000, Schneider Automation recommends that you disable Media Sense to prevent the network services from being disabled when you are not connected to a network.

Note: If you are installing Monitor Pro on Windows NT, you can skip this step.

Warning: Using Registry Editor incorrectly can cause serious problems that may require you to reinstall your operating system. Microsoft does not guarantee that problems resulting from the incorrect use of Registry Editor can be solved. Use Registry Editor at your own risk.

- ✓ Use Registry Editor (regedt32.exe) to view the following key in the registry:

HKEY_LOCAL_MACHINE\System\CurrentControlSet\Services\Tcpip\Parameters

- ✓ Add the following registry value:

Value Name: DisableDHCPMediaSense

Data Type: REG_DWORD

Data: 1 (True)

Note: For information about Media Sense, refer to the Microsoft Support Article Q239924 (<http://support.microsoft.com>).

4. Install Internet Explorer 4.x or 5.x (IE 6.x is not compatible).
5. Install the Monitor Pro v7 system software (**client components**) from the *Client and Server CD*. (Refer to “Chapter 2” in the *FactoryLink 7.0 Installation Guide* for detailed instructions.)
 - ✓ When the **License Configuration** window appears, enter the same serial number and configuration sequence that you entered in the same window during the Server Only installation. (This is the serial number and configuration sequence from *Exhibit A* of your Monitor Pro v7 shipping package.)
 - ✓ When the **Monitor Pro Licensing Utility** window appears, enter the host name or IP address of the server to which the client will point.
 - ✓ Client Builder is installed automatically. (Only the full Client Builder project is installed; no compressed file is provided as an archive. Schneider Automation recommends that you save the project as an archive (.cba) after installation and before working in the project. You can save the project in two ways: (1) using the FVArchive.exe utility in the Schneider Automation\Monitor Pro\Client Builder\Program directory or (2) in Client Builder, you can use **Tools > Application > Save\Restore Project**.)
 - ✓ There are two reboots during installation: The installation preps the system by installing some needed system files and then does a reboot very early in the install. Then the installation does another reboot after it finishes installing the system prior to installation of the device interfaces. Do not eject the installation CD between the reboots.

6. Install Service Pack 1 from the Monitor Pro v7 *Service Pack 1 CD*. (Refer to the *Getting Started with Monitor Pro v7 Service Pack 1 Including Run-Time Client* document for detailed instructions.)
7. Install the Monitor Pro v7++ system software from the *Monitor Pro v7++ CD*. (Refer to “Chapter 3” in the *FactoryLink++ User Guide* for detailed instructions.)

Caution: Do not install any of the value-added products (VAPs) from the *Device Interfaces and Value-Added Products CD* after installing Monitor Pro v7++ or the VAPs will overwrite the Monitor Pro v7++ files.

8. Run the DCOMWiz.exe utility from the Schneider Automation\Monitor Pro\FactoryLink\Bin directory on all server and client computers. This utility provides a quick way for you to ensure that you have the proper DCOM settings for running Monitor Pro.

Note: Schneider Automation recommends that you re-run the DCOMWiz.exe utility after any system update, such as service packs and patches.

9. Restore the QuickStart Client application. (Refer to “Chapter 3” in the *FactoryLink++ User Guide* for detailed instructions.)

WebClient

Although Client Builder is automatically installed with Monitor Pro v7, if you wish, you can use the WebClient product instead of using Client Builder. WebClient gives you the capability to remotely monitor and control Monitor Pro applications using ECS graphics. WebClient can be run standalone or dropped into an ActiveX container such as Internet Explorer or Client Builder. The WebClient server tasks are installed with the Monitor Pro base system. You can install the client-side components of WebClient from a distribution CD or over a network.

Refer to the *FactoryLink 7.0 WebClient User Guide* for information about using WebClient and for detailed installation instructions.

Note: WebClient is not redundant and has not been upgraded to support Monitor Pro v7++ features.

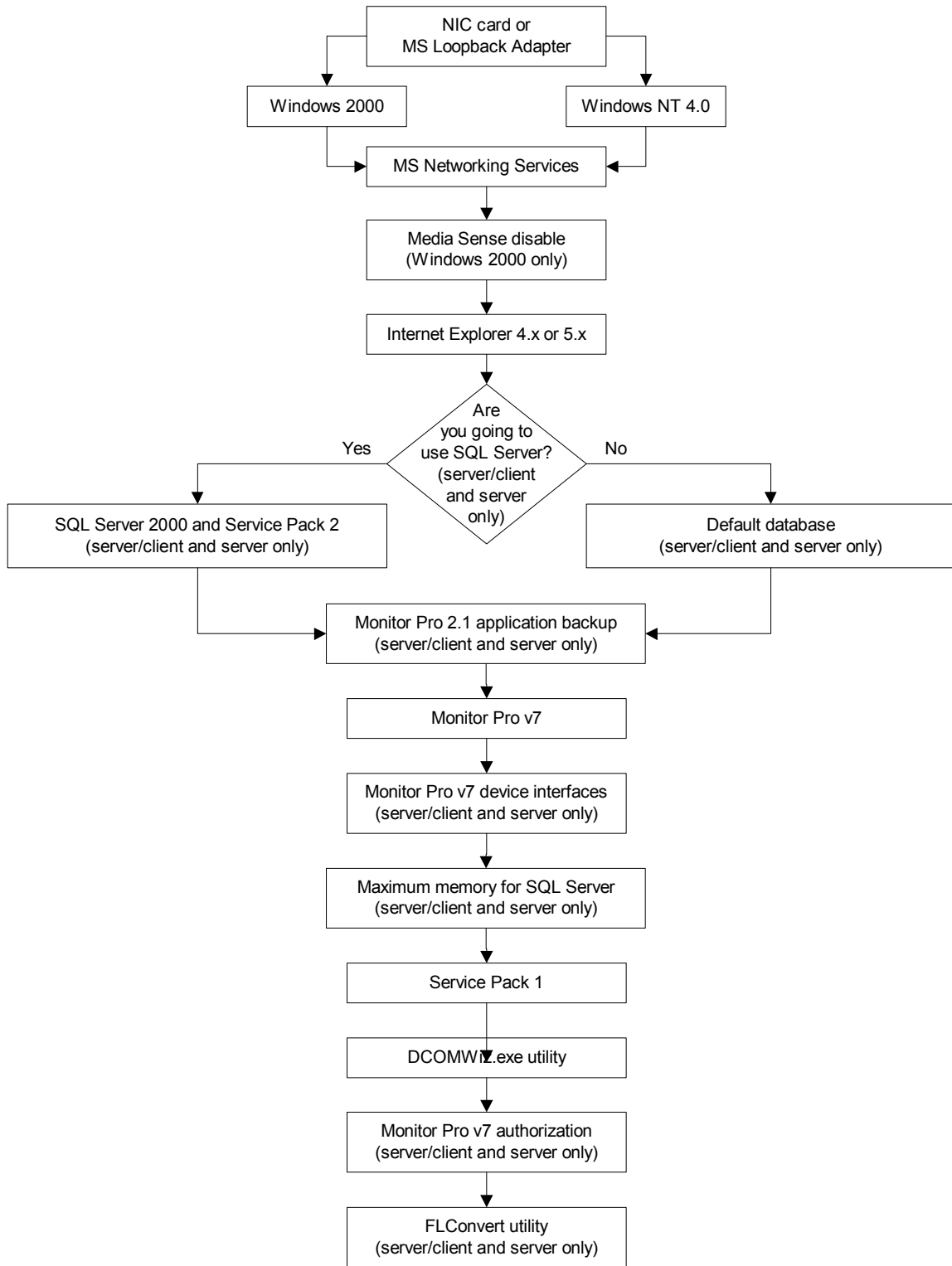
Scenario 2—Installing Monitor Pro v7++ (New User)

Scenario 3

Upgrading Monitor Pro 2.1 to Monitor Pro v7

Scenario 3—Upgrading Monitor Pro 2.1 to Monitor Pro v7

Installation Sequence for Scenario 3 -- Upgrading Monitor Pro 2.1 to Monitor Pro v7



Scenario 3—Upgrading Monitor Pro 2.1 to Monitor Pro v7

If you are upgrading Monitor Pro on a single computer, follow the “Server/Client” procedure. If you are upgrading Monitor Pro on separate computers, follow the “Server Only” and “Client Only” procedures.

Note: If you are a developer or integrator who needs to keep an existing Monitor Pro 2.1 version for development purposes, you can install Monitor Pro v7 in a different directory. Since Monitor Pro v7 has to overwrite the system environment settings, you can do either of the following:

- ✓ Run previous versions of Monitor Pro from the DOS prompt and set the environment settings using the flsetup.bat file found in the ECS {flink}\bin directory. All commands must then be run by command line from the DOS window, for example: flcm, appedit, flrun.
- ✓ Create a second user and set the ECS FL environment settings in the user environment.

Server/Client

1. Monitor Pro v7 requires that a network adapter and Microsoft networking services be installed and running even if you do not plan to connect your Monitor Pro system to a network. If you do not have a Network Interface Card (NIC) installed, you must install Microsoft’s Loopback Adapter using one of the following procedures, depending on whether you have Windows 2000 or Windows NT 4.0, Service Pack 4 (or higher).

If you have Windows 2000 . . .	If you have Windows NT 4.0 . . .
<ol style="list-style-type: none"> a. Click Start > Settings > Control Panel. b. Double-click Add/Remove Hardware. c. Click Next to start the wizard. d. Select “Add/Troubleshoot a Device” and click Next. e. Select “Add a New Device” and click Next. f. Select “No, I want to select the hardware from a list” and click Next. g. Select “Network Adapters” and click Next. h. From the Manufacturer list, select “Microsoft.” i. From the Network Adapter list, select “Microsoft Loopback Adapter” and click Next. j. Click Next. k. Click Finish. 	<ol style="list-style-type: none"> a. Click Start > Settings > Control Panel. b. Click the Network icon. c. Click the Adapters tab. d. Click the Add button. e. From the Select Network Adapter window, select “MS Loopback Adapter.” f. Click OK. <p>Note: Some systems may request that you insert the <i>Windows NT 4.0 CD</i> so the system can access the appropriate files.</p>

Scenario 3—Upgrading Monitor Pro 2.1 to Monitor Pro v7

2. Make sure the following Microsoft Networking Services are installed and running properly:
 - ✓ TCP/IP installed and bound to a Network Interface Card (NIC) (or Microsoft Loopback Adapter if the computer is running standalone)
 - ✓ Computer Browser
 - ✓ NetBIOS
 - ✓ Workstation services
 - ✓ Server services
 - ✓ Remote Procedure Call (RPC) service
3. If you are installing Monitor Pro on Windows 2000, Schneider Automation recommends that you disable Media Sense to prevent the network services from being disabled when you are not connected to a network.

Note: If you are installing Monitor Pro on Windows NT, you can skip this step.

Warning: Using Registry Editor incorrectly can cause serious problems that may require you to reinstall your operating system. Microsoft does not guarantee that problems resulting from the incorrect use of Registry Editor can be solved. Use Registry Editor at your own risk.

- ✓ Use Registry Editor (regedt32.exe) to view the following key in the registry:
HKEY_LOCAL_MACHINE\System\CurrentControlSet\Services\Tcpip\Parameters
- ✓ Add the following registry value:
Value Name: DisableDHCPMediaSense
Data Type: REG_DWORD
Data: 1 (True)

Note: For information about Media Sense, refer to the Microsoft Support Article Q239924 (<http://support.microsoft.com>).

4. Install Internet Explorer 4.x or 5.x (IE 6.x is not compatible).
5. If you plan to use SQL Server 2000 as your default database, install SQL Server 2000 from the appropriate *Microsoft SQL Server 2000 CD* (see below). (Refer to “Appendix A” of the *FactoryLink 7.0 Installation Guide* for detailed installation instructions.)
 - ✓ Depending on your platform, install SQL Server from the appropriate CD as follows:
 - Microsoft Windows NT Workstation: Install SQL Server 2000 from the *Microsoft SQL Server 2000 Personal Edition CD*.
 - Microsoft Windows NT Server: Install SQL Server 2000 from the *Microsoft SQL Server 2000 Standard Edition CD*.
 - Microsoft Windows 2000 Professional: Install SQL Server 2000 from the *Microsoft SQL Server 2000 Personal Edition CD*.

- Microsoft Windows 2000 Server or Advanced Server: Install SQL Server 2000 from the *Microsoft SQL Server 2000 Standard Edition CD*.
 - ✓ SQL Server does not have to be installed on the same computer as Monitor Pro.
 - ✓ Schneider Automation recommends SQL Server as the primary database. You also need the SQL Server to use the Starter Application that is automatically installed with the Monitor Pro v7 software. (The Monitor Pro installation will install the Starter Application configured for Microsoft SQL Server or for dBase IV. If you plan to use any database other than SQL Server or dBase IV, such as Oracle, you should select the “dBase IV” option during the system software installation in the next step.)
 - ✓ Schneider Automation requires that you install SQL Server 2000 Service Pack 2, which is available as part of the Monitor Pro installation CD set.
 - ✓ If you already have SQL Server 2000 and SQL Server 2000 Service Pack 2 installed and available for Monitor Pro, you can skip this step.
6. Save archive copies of Monitor Pro 2.1 applications prior to installing Monitor Pro v7.
- Caution:** After you install Monitor Pro v7, the Monitor Pro 2.1 files will no longer be operational. All Monitor Pro 2.1 applications will need to be converted.
7. Install the Monitor Pro v7 system software (**server and client components**) from the *Client and Server CD*. (Refer to “Chapter 2” in the *FactoryLink 7.0 Installation Guide* for detailed instructions.)
- ✓ When the **License Configuration** window appears, you enter the serial number and configuration sequence from *Exhibit A* of your Monitor Pro v7 shipping package. Be sure to write down the registration code that is generated. You will use this code later when you contact Schneider Automation to authorize Monitor Pro. Schneider Automation recommends that you wait to authorize Monitor Pro until the system has been installed and tested. You have ten days to authorize Monitor Pro after installation.
 - ✓ The installation will give you a choice of installing the Starter Application configured for Microsoft SQL Server or for dBase IV. If you plan to use any database other than SQL Server or dBase IV, such as Oracle, you should select the “dBase IV” option.
 - ✓ Client Builder is installed automatically. (Only the full Client Builder project is installed; no compressed file is provided as an archive. Schneider Automation recommends that you save the project as an archive (.cba) after installation and before working in the project. You can save the project in two ways: (1) using the FVArchive.exe utility in the Schneider Automation\Monitor Pro\Client Builder\Program directory or (2) in Client Builder, you can use **Tools > Application > Save\Restore Project**.)
 - ✓ There are two reboots during installation: The installation preps the system by installing some needed system files and then does a reboot very early in the install. Then the installation does another reboot after it finishes installing the system prior to installation of the device interfaces. Do not eject the installation CD between the reboots.

Scenario 3—Upgrading Monitor Pro 2.1 to Monitor Pro v7

8. Install the Monitor Pro v7 device interfaces from the *Device Interfaces and Value-Added Products CD*. (Refer to “Chapter 4” in the *FactoryLink 7.0 Installation Guide* for detailed instructions.)

Note: You will skip this step if you de-selected the device interfaces option during the system software installation in the previous step.

9. After you install Monitor Pro v7 and Microsoft SQL Server 2000, set up a maximum memory limit on the SQL Server. The setup ensures that Monitor Pro has adequate memory resources. (Refer to the “Setting up Memory Size for Microsoft SQL Server 2000” procedure in “Chapter 6” of the *FactoryLink 7.0 Installation Guide* for detailed instructions.)
10. Install Service Pack 1 from the Monitor Pro v7 *Service Pack 1 CD*. (Refer to the *Getting Started with Monitor Pro v7 Service Pack 1 Including Run-Time Client* document for detailed instructions.)
11. Run the DCOMWiz.exe utility from the Schneider Automation\Monitor Pro\FactoryLink\Bin directory on all server and client computers. This utility provides a quick way for you to ensure that you have the proper DCOM settings for running Monitor Pro.

Note: Schneider Automation recommends that you re-run the DCOMWiz.exe utility after any system update, such as service packs and patches.

12. Authorize Monitor Pro v7 using the registration code that was generated on the **License Configuration** window in Step 7. (Refer to “Chapter 5” in the *FactoryLink 7.0 Installation Guide* for detailed instructions.)

Note: Schneider Automation recommends that you wait to authorize Monitor Pro until the system has been installed and tested. You have ten days to authorize Monitor Pro after installation.

13. Convert existing Monitor Pro 2.1 applications using the FLConvert utility in Configuration Explorer or at the DOS command prompt. (Refer to the *FactoryLink 7.0 Conversion Guide* for detailed instructions.)
 - ✓ FLConvert does not convert ECS graphics to Client Builder graphics. You can either (1) use the ECS graphics as they are while running Graph.exe or (2) you can use the ECSSConvert utility to convert the ECS graphics to a Client Builder project. Although ECSSConvert handles most conversion issues, some features of ECS graphics cannot convert completely. You may need to use Client Builder to modify converted graphics.
 - ✓ Monitor Pro v7 still supports the Monitor Pro ECS graphics tools: Application Editor, WebClient, and Graph. Both Client Builder and the ECS graphics tools are installed on the same Monitor Pro client machine. To run ECS graphics, open Configuration Explorer, go to the **Application Properties** window (right-click the application and click **Properties**), and remove the **-nshared** flag from the **Flrunargs** field.

Server Only

When you are installing the server and client on separate computers, you install the device interfaces and Starter Application on the server machine only.

1. Monitor Pro v7 requires that a network adapter and Microsoft networking services be installed and running even if you do not plan to connect your Monitor Pro system to a network. If you do not have a Network Interface Card (NIC) installed, you must install Microsoft’s Loopback Adapter using one of the following procedures, depending on whether you have Windows 2000 or Windows NT 4.0, Service Pack 4 (or higher).

If you have Windows 2000 . . .	If you have Windows NT 4.0 . . .
<ol style="list-style-type: none"> a. Click Start > Settings > Control Panel. b. Double-click Add/Remove Hardware. c. Click Next to start the wizard. d. Select “Add/Troubleshoot a Device” and click Next. e. Select “Add a New Device” and click Next. f. Select “No, I want to select the hardware from a list” and click Next. g. Select “Network Adapters” and click Next. h. From the Manufacturer list, select “Microsoft.” i. From the Network Adapter list, select “Microsoft Loopback Adapter” and click Next. j. Click Next. k. Click Finish. 	<ol style="list-style-type: none"> a. Click Start > Settings > Control Panel. b. Click the Network icon. c. Click the Adapters tab. d. Click the Add button. e. From the Select Network Adapter window, select “MS Loopback Adapter.” f. Click OK. <p>Note: Some systems may request that you insert the <i>Windows NT 4.0 CD</i> so the system can access the appropriate files.</p>

2. Make sure the following Microsoft Networking Services are installed and running properly:
 - ✓ TCP/IP installed and bound to a Network Interface Card (NIC) (or Microsoft Loopback Adapter if the computer is running standalone)
 - ✓ Computer Browser
 - ✓ NetBIOS
 - ✓ Workstation services
 - ✓ Server services
 - ✓ Remote Procedure Call (RPC) service

Scenario 3—Upgrading Monitor Pro 2.1 to Monitor Pro v7

3. If you are installing Monitor Pro on Windows 2000, Schneider Automation recommends that you disable Media Sense to prevent the network services from being disabled when you are not connected to a network.

Note: If you are installing Monitor Pro on Windows NT, you can skip this step.

Warning: Using Registry Editor incorrectly can cause serious problems that may require you to reinstall your operating system. Microsoft does not guarantee that problems resulting from the incorrect use of Registry Editor can be solved. Use Registry Editor at your own risk.

- ✓ Use Registry Editor (regedt32.exe) to view the following key in the registry:

HKEY_LOCAL_MACHINE\System\CurrentControlSet\Services\Tcpip\Parameters

- ✓ Add the following registry value:

Value Name: DisableDHCPMediaSense

Data Type: REG_DWORD

Data: 1 (True)

Note: For information about Media Sense, refer to the Microsoft Support Article Q239924 (<http://support.microsoft.com>).

4. Install Internet Explorer 4.x or 5.x (IE 6.x is not compatible).
5. If you plan to use SQL Server 2000 as your default database, install SQL Server 2000 from the appropriate *Microsoft SQL Server 2000 CD* (see below). (Refer to “Appendix A” of the *FactoryLink 7.0 Installation Guide* for detailed installation instructions.)
 - ✓ Depending on your platform, install SQL Server from the appropriate CD as follows:
 - Microsoft Windows NT Workstation: Install SQL Server 2000 from the *Microsoft SQL Server 2000 Personal Edition CD*.
 - Microsoft Windows NT Server: Install SQL Server 2000 from the *Microsoft SQL Server 2000 Standard Edition CD*.
 - Microsoft Windows 2000 Professional: Install SQL Server 2000 from the *Microsoft SQL Server 2000 Personal Edition CD*.
 - Microsoft Windows 2000 Server or Advanced Server: Install SQL Server 2000 from the *Microsoft SQL Server 2000 Standard Edition CD*.
 - ✓ SQL Server does not have to be installed on the same computer as Monitor Pro.
 - ✓ Schneider Automation recommends SQL Server as the primary database. You also need the SQL Server to use the Starter Application that is automatically installed with the Monitor Pro v7 software. (The Monitor Pro installation will install the Starter Application configured for Microsoft SQL Server or for dBase IV. If you plan to use any

database other than SQL Server or dBase IV, such as Oracle, you should select the “dBase IV” option during the system software installation in the next step.)

- ✓ Schneider Automation requires that you install SQL Server 2000 Service Pack 2, which is available as part of the Monitor Pro installation CD set.
 - ✓ If you already have SQL Server 2000 and SQL Server 2000 Service Pack 2 installed and available for Monitor Pro, you can skip this step.
6. Save archive copies of Monitor Pro 2.1 applications prior to installing Monitor Pro v7.

Caution: After you install Monitor Pro v7, the Monitor Pro 2.1 files will no longer be operational. All Monitor Pro 2.1 applications will need to be converted.

7. Install the Monitor Pro v7 system software (**server components**) from the *Client and Server CD*. (Refer to “Chapter 2” in the *FactoryLink 7.0 Installation Guide* for detailed instructions.)

- ✓ When the **License Configuration** window appears, you enter the serial number and configuration sequence from *Exhibit A* of your Monitor Pro v7 shipping package. Be sure to write down the registration code that is generated. You will use this code later when you contact Schneider Automation to authorize Monitor Pro. Schneider Automation recommends that you wait to authorize Monitor Pro until the system has been installed and tested. You have ten days to authorize Monitor Pro after installation.
- ✓ The installation will give you a choice of installing the Starter Application configured for Microsoft SQL Server or for dBase IV. If you plan to use any database other than SQL Server or dBase IV, such as Oracle, you should select the “dBase IV” option.
- ✓ There are two reboots during installation: The installation preps the system by installing some needed system files and then does a reboot very early in the install. Then the installation does another reboot after it finishes installing the system prior to installation of the device interfaces. Do not eject the installation CD between the reboots.

8. Install the Monitor Pro v7 device interfaces from the *Device Interfaces and Value-Added Products CD*. (Refer to “Chapter 4” in the *FactoryLink 7.0 Installation Guide* for detailed instructions.)

Note: You will skip this step if you de-selected the device interfaces option during the system software installation in the previous step.

9. After you install Monitor Pro v7 and Microsoft SQL Server 2000, set up a maximum memory limit on the SQL Server. The setup ensures that Monitor Pro has adequate memory resources. (Refer to the “Setting up Memory Size for Microsoft SQL Server 2000” procedure in “Chapter 6” of the *FactoryLink 7.0 Installation Guide* for detailed instructions.)
10. Install Service Pack 1 from the Monitor Pro v7 *Service Pack 1 CD*. (Refer to the *Getting Started with Monitor Pro v7 Service Pack 1 Including Run-Time Client* document for detailed instructions.)

Scenario 3—Upgrading Monitor Pro 2.1 to Monitor Pro v7

11. Run the DCOMWiz.exe utility from the Schneider Automation\Monitor Pro\FactoryLink\Bin directory on all server and client computers. This utility provides a quick way for you to ensure that you have the proper DCOM settings for running Monitor Pro.

Note: Schneider Automation recommends that you re-run the DCOMWiz.exe utility after any system update, such as service packs and patches.

12. Authorize Monitor Pro v7 using the registration code that was generated on the **License Configuration** window in Step 7. (Refer to “Chapter 5” in the *FactoryLink 7.0 Installation Guide* for detailed instructions.)

Note: Schneider Automation recommends that you wait to authorize Monitor Pro until the system has been installed and tested. You have ten days to authorize Monitor Pro after installation.

13. Convert existing Monitor Pro 2.1 applications using the FLConvert utility in Configuration Explorer or at the DOS command prompt. (Refer to the *FactoryLink 7.0 Conversion Guide* for detailed instructions.)

- ✓ FLConvert does not convert ECS graphics to Client Builder graphics. You can either (1) use the ECS graphics as they are while running Graph.exe or (2) you can use the ECSSConvert utility to convert the ECS graphics to a Client Builder project. Although ECSSConvert handles most conversion issues, some features of ECS graphics cannot convert completely. You may need to use Client Builder to modify converted graphics.
- ✓ Monitor Pro v7 still supports the Monitor Pro ECS graphics tools: Application Editor, WebClient, and Graph. Both Client Builder and the ECS graphics tools are installed on the same Monitor Pro client machine. To run ECS graphics, open Configuration Explorer, go to the **Application Properties** window (right-click the application and click **Properties**), and remove the **-nshared** flag from the **Flrunargs** field.

Client Only

1. Monitor Pro v7 requires that a network adapter and Microsoft networking services be installed and running even if you do not plan to connect your Monitor Pro system to a network. If you do not have a Network Interface Card (NIC) installed, you must install Microsoft’s Loopback Adapter using one of the following procedures, depending on whether you have Windows 2000 or Windows NT 4.0, Service Pack 4 (or higher).

If you have Windows 2000 . . .	If you have Windows NT 4.0 . . .
<ol style="list-style-type: none"> a. Click Start > Settings > Control Panel. b. Double-click Add/Remove Hardware. c. Click Next to start the wizard. d. Select “Add/Troubleshoot a Device” and click Next. e. Select “Add a New Device” and click Next. f. Select “No, I want to select the hardware from a list” and click Next. g. Select “Network Adapters” and click Next. h. From the Manufacturer list, select “Microsoft.” i. From the Network Adapter list, select “Microsoft Loopback Adapter” and click Next. j. Click Next. k. Click Finish. 	<ol style="list-style-type: none"> a. Click Start > Settings > Control Panel. b. Click the Network icon. c. Click the Adapters tab. d. Click the Add button. e. From the Select Network Adapter window, select “MS Loopback Adapter.” f. Click OK. <p>Note: Some systems may request that you insert the <i>Windows NT 4.0 CD</i> so the system can access the appropriate files.</p>

2. Make sure the following Microsoft Networking Services are installed and running properly:
 - ✓ TCP/IP installed and bound to a Network Interface Card (NIC) (or Microsoft Loopback Adapter if the computer is running standalone)
 - ✓ Computer Browser
 - ✓ NetBIOS
 - ✓ Workstation services
 - ✓ Server services
 - ✓ Remote Procedure Call (RPC) service

Scenario 3—Upgrading Monitor Pro 2.1 to Monitor Pro v7

3. If you are installing Monitor Pro on Windows 2000, Schneider Automation recommends that you disable Media Sense to prevent the network services from being disabled when you are not connected to a network.

Note: If you are installing Monitor Pro on Windows NT, you can skip this step.

Warning: Using Registry Editor incorrectly can cause serious problems that may require you to reinstall your operating system. Microsoft does not guarantee that problems resulting from the incorrect use of Registry Editor can be solved. Use Registry Editor at your own risk.

- ✓ Use Registry Editor (regedt32.exe) to view the following key in the registry:

HKEY_LOCAL_MACHINE\System\CurrentControlSet\Services\Tcpip\Parameters

- ✓ Add the following registry value:

Value Name: DisableDHCPMediaSense

Data Type: REG_DWORD

Data: 1 (True)

Note: For information about Media Sense, refer to the Microsoft Support Article Q239924 (<http://support.microsoft.com>).

4. Install Internet Explorer 4.x or 5.x (IE 6.x is not compatible).
5. Install the Monitor Pro v7 system software (**client components**) from the *Client and Server CD*. (Refer to “Chapter 2” in the *FactoryLink 7.0 Installation Guide* for detailed instructions.)
 - ✓ When the **License Configuration** window appears, enter the same serial number and configuration sequence that you entered in the same window during the Server Only installation. (This is the serial number and configuration sequence from *Exhibit A* of your Monitor Pro v7 shipping package.)
 - ✓ When the **Monitor Pro Licensing Utility** window appears, enter the host name or IP address of the server to which the client will point.
 - ✓ Client Builder is installed automatically. (Only the full Client Builder project is installed; no compressed file is provided as an archive. Schneider Automation recommends that you save the project as an archive (.cba) after installation and before working in the project. You can save the project in two ways: (1) using the FVArchive.exe utility in the Schneider Automation\Monitor Pro\Client Builder\Program directory or (2) in Client Builder, you can use **Tools > Application > Save\Restore Project**.)
 - ✓ There are two reboots during installation: The installation preps the system by installing some needed system files and then does a reboot very early in the install. Then the installation does another reboot after it finishes installing the system prior to installation of the device interfaces. Do not eject the installation CD between the reboots.

6. Install Service Pack 1 from the Monitor Pro v7 *Service Pack 1 CD*. (Refer to the *Getting Started with Monitor Pro v7 Service Pack 1 Including Run-Time Client* document for detailed instructions.)
7. Run the DCOMWiz.exe utility from the Schneider Automation\Monitor Pro\FactoryLink\Bin directory on all server and client computers. This utility provides a quick way for you to ensure that you have the proper DCOM settings for running Monitor Pro.

Note: Schneider Automation recommends that you re-run the DCOMWiz.exe utility after any system update, such as service packs and patches.

WebClient

Although Client Builder is automatically installed with Monitor Pro v7, if you wish, you can use the WebClient product instead of using Client Builder. WebClient gives you the capability to remotely monitor and control Monitor Pro applications using ECS graphics. WebClient can be run standalone or dropped into an ActiveX container such as Internet Explorer or Client Builder. The WebClient server tasks are installed with the Monitor Pro base system. You can install the client-side components of WebClient from a distribution CD or over a network.

Refer to the *FactoryLink 7.0 WebClient User Guide* for information about using WebClient and for detailed installation instructions.

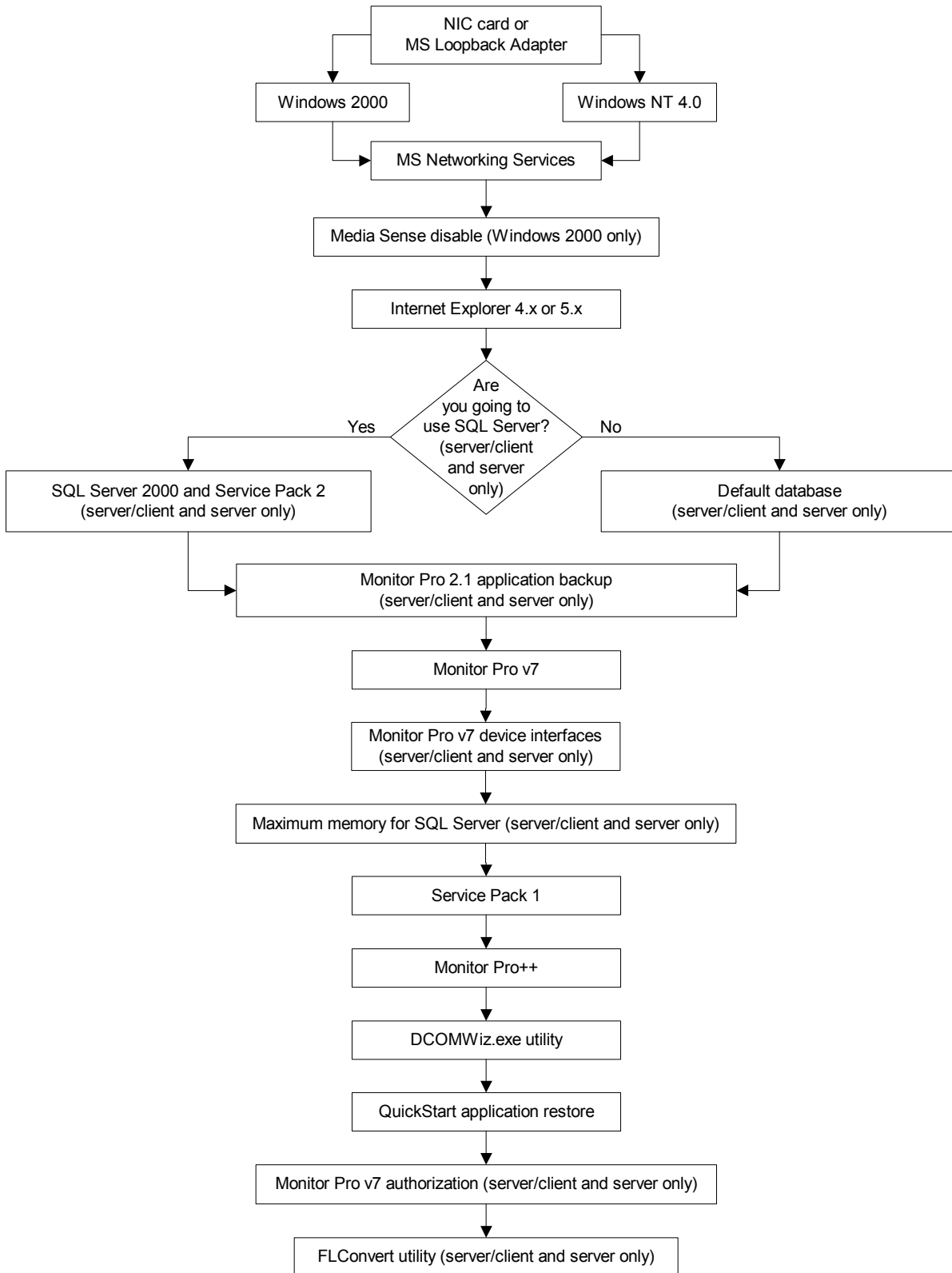
Scenario 3—Upgrading Monitor Pro 2.1 to Monitor Pro v7

Scenario 4

Upgrading Monitor Pro 2.1 to Monitor Pro v7++

Scenario 4—Upgrading Monitor Pro 2.1 to Monitor Pro v7++

Installation Sequence for Scenario 4 -- Upgrading Monitor Pro 2.1 to Monitor Pro++



Scenario 4—Upgrading Monitor Pro 2.1 to Monitor Pro v7++

If you are upgrading Monitor Pro on a single computer, follow the “Server/Client” procedure. If you are upgrading Monitor Pro on separate computers, follow the “Server Only” and “Client Only” procedures.

Note: If you are a developer or integrator who needs to keep an existing Monitor Pro 2.1 version on your machine for development purposes, you can install Monitor Pro v7 in a different directory. Since Monitor Pro v7 has to overwrite the system environment settings, you can do either of the following:

- ✓ Run previous versions of Monitor Pro from the DOS prompt and set the environment settings using the flsetup.bat file found in the ECS {flink}\bin directory. All commands must then be run by command line from the DOS window, for example: flcm, appetit, flrun.
- ✓ Create a second user and set the ECS FL environment settings in the user environment.

Server/Client

1. Monitor Pro v7 requires that a network adapter and Microsoft networking services be installed and running even if you do not plan to connect your Monitor Pro system to a network. If you do not have a Network Interface Card (NIC) installed, you must install Microsoft’s Loopback Adapter using one of the following procedures, depending on whether you have Windows 2000 or Windows NT 4.0, Service Pack 4 (or higher).

If you have Windows 2000 . . .	If you have Windows NT 4.0 . . .
<ol style="list-style-type: none"> a. Click Start > Settings > Control Panel. b. Double-click Add/Remove Hardware. c. Click Next to start the wizard. d. Select “Add/Troubleshoot a Device” and click Next. e. Select “Add a New Device” and click Next. f. Select “No, I want to select the hardware from a list” and click Next. g. Select “Network Adapters” and click Next. h. From the Manufacturer list, select “Microsoft.” i. From the Network Adapter list, select “Microsoft Loopback Adapter” and click Next. j. Click Next. k. Click Finish. 	<ol style="list-style-type: none"> a. Click Start > Settings > Control Panel. b. Click the Network icon. c. Click the Adapters tab. d. Click the Add button. e. From the Select Network Adapter window, select “MS Loopback Adapter.” f. Click OK. <p>Note: Some systems may request that you insert the <i>Windows NT 4.0 CD</i> so the system can access the appropriate files.</p>

Scenario 4—Upgrading Monitor Pro 2.1 to Monitor Pro v7++

2. Make sure the following Microsoft Networking Services are installed and running properly:
 - ✓ TCP/IP installed and bound to a Network Interface Card (NIC) (or Microsoft Loopback Adapter if the computer is running standalone)
 - ✓ Computer Browser
 - ✓ NetBIOS
 - ✓ Workstation services
 - ✓ Server services
 - ✓ Remote Procedure Call (RPC) service

3. If you are installing Monitor Pro on Windows 2000, Schneider Automation recommends that you disable Media Sense to prevent the network services from being disabled when you are not connected to a network.

Note: If you are installing Monitor Pro on Windows NT, you can skip this step.

Warning: Using Registry Editor incorrectly can cause serious problems that may require you to reinstall your operating system. Microsoft does not guarantee that problems resulting from the incorrect use of Registry Editor can be solved. Use Registry Editor at your own risk.

- ✓ Use Registry Editor (regedt32.exe) to view the following key in the registry:

HKEY_LOCAL_MACHINE\System\CurrentControlSet\Services\Tcpip\Parameters

- ✓ Add the following registry value:

Value Name: DisableDHCPMediaSense

Data Type: REG_DWORD

Data: 1 (True)

Note: For information about Media Sense, refer to the Microsoft Support Article Q239924 (<http://support.microsoft.com>).

4. Install Internet Explorer 4.x or 5.x (IE 6.x is not compatible).
5. If you plan to use SQL Server 2000 as your default database, install SQL Server 2000 from the appropriate *Microsoft SQL Server 2000 CD* (see below). (Refer to “Appendix A” of the *FactoryLink 7.0 Installation Guide* for detailed installation instructions.)
 - ✓ Depending on your platform, install SQL Server from the appropriate CD as follows:
 - Microsoft Windows NT Workstation: Install SQL Server 2000 from the *Microsoft SQL Server 2000 Personal Edition CD*.
 - Microsoft Windows NT Server: Install SQL Server 2000 from the *Microsoft SQL Server 2000 Standard Edition CD*.

Scenario 4—Upgrading Monitor Pro 2.1 to Monitor Pro v7++

- Microsoft Windows 2000 Professional: Install SQL Server 2000 from the *Microsoft SQL Server 2000 Personal Edition CD*.
 - Microsoft Windows 2000 Server or Advanced Server: Install SQL Server 2000 from the *Microsoft SQL Server 2000 Standard Edition CD*.
- ✓ SQL Server does not have to be installed on the same computer as Monitor Pro.
 - ✓ Schneider Automation recommends SQL Server as the primary database. You also need the SQL Server to use the Starter Application that is automatically installed with the Monitor Pro v7 software. (The Monitor Pro installation will install the Starter Application configured for Microsoft SQL Server or for dBase IV. If you plan to use any database other than SQL Server or dBase IV, such as Oracle, you should select the “dBase IV” option during the system software installation in the next step.)
 - ✓ Schneider Automation requires that you install SQL Server 2000 Service Pack 2, which is available as part of the Monitor Pro installation CD set.
 - ✓ If you already have SQL Server 2000 and SQL Server 2000 Service Pack 2 installed and available for Monitor Pro, you can skip this step.
6. Save archive copies of Monitor Pro 2.1 applications prior to installing Monitor Pro v7.
- Caution:** After you install Monitor Pro v7, the Monitor Pro 2.1 files will no longer be operational. All Monitor Pro 2.1 applications will need to be converted.
7. Install the Monitor Pro v7 system software (**server and client components**) from the *Client and Server CD*. (Refer to “Chapter 2” in the *FactoryLink 7.0 Installation Guide* for detailed instructions.)
- ✓ When the **License Configuration** window appears, you enter the serial number and configuration sequence from *Exhibit A* of your Monitor Pro v7 shipping package. Be sure to write down the registration code that is generated. You will use this code later when you contact Schneider Automation to authorize Monitor Pro. Schneider Automation recommends that you wait to authorize Monitor Pro until the system has been installed and tested. You have ten days to authorize Monitor Pro after installation.
 - ✓ The installation will give you a choice of installing the Starter Application configured for Microsoft SQL Server or for dBase IV. If you plan to use any database other than SQL Server or dBase IV, such as Oracle, you should select the “dBase IV” option.
 - ✓ Client Builder is installed automatically. (Only the full Client Builder project is installed; no compressed file is provided as an archive. Schneider Automation recommends that you save the project as an archive (.cba) after installation and before working in the project. You can save the project in two ways: (1) using the FVArchive.exe utility in the Schneider Automation\Monitor Pro\Client Builder\Program directory or (2) in Client Builder, you can use **Tools > Application > Save\Restore Project**.)

Scenario 4—Upgrading Monitor Pro 2.1 to Monitor Pro v7++

- ✓ There are two reboots during installation: The installation preps the system by installing some needed system files and then does a reboot very early in the install. Then the installation does another reboot after it finishes installing the system prior to installation of the device interfaces. Do not eject the installation CD between the reboots.

8. Install the Monitor Pro v7 device interfaces from the *Device Interfaces and Value-Added Products CD*. (Refer to “Chapter 4” in the *FactoryLink 7.0 Installation Guide* for detailed instructions.)

Note: You will skip this step if you de-selected the device interfaces option during the system software installation in the previous step.

9. After you install Monitor Pro v7 and Microsoft SQL Server 2000, set up a maximum memory limit on the SQL Server. The setup ensures that Monitor Pro has adequate memory resources. (Refer to the “Setting up Memory Size for Microsoft SQL Server 2000” procedure in “Chapter 6” of the *FactoryLink 7.0 Installation Guide* for detailed instructions.)
10. Install Service Pack 1 from the Monitor Pro v7 *Service Pack 1 CD*. (Refer to the *Getting Started with Monitor Pro v7 Service Pack 1 Including Run-Time Client* document for detailed instructions.)
11. Install the Monitor Pro v7++ system software from the *Monitor Pro v7++ CD*. (Refer to “Chapter 3” in the *FactoryLink++ User Guide* for detailed instructions.)

Caution: Do not install any of the value-added products (VAPs) from the *Device Interfaces and Value-Added Products CD* after installing Monitor Pro v7++ or the VAPs will overwrite the Monitor Pro v7++ files.

12. Run the DCOMWiz.exe utility from the Schneider Automation\Monitor Pro\FactoryLink\Bin directory on all server and client computers. This utility provides a quick way for you to ensure that you have the proper DCOM settings for running Monitor Pro.

Note: Schneider Automation recommends that you re-run the DCOMWiz.exe utility after any system update, such as service packs and patches.

13. Restore the QuickStart Server application. (Refer to “Chapter 3” in the *FactoryLink++ User Guide* for detailed instructions.)
14. Restore the QuickStart Client application. (Refer to “Chapter 3” in the *FactoryLink++ User Guide* for detailed instructions.)
15. Authorize Monitor Pro v7 using the registration code that was generated on the **License Configuration** window in Step 7. (Refer to “Chapter 5” in the *FactoryLink 7.0 Installation Guide* for detailed instructions.)

Note: Schneider Automation recommends that you wait to authorize Monitor Pro until the system has been installed and tested. You have ten days to authorize Monitor Pro after installation.

16. Convert existing Monitor Pro 2.1 applications using the FLConvert utility in Configuration Explorer or at the DOS command prompt. (Refer to the *FactoryLink 7.0 Conversion Guide* for detailed instructions.)
- ✓ FLConvert does not convert ECS graphics to Client Builder graphics. You can either (1) use the ECS graphics as they are while running Graph.exe or (2) you can use the ECSSConvert utility to convert the ECS graphics to a Client Builder project. Although ECSSConvert handles most conversion issues, some features of ECS graphics cannot convert completely. You may need to use Client Builder to modify converted graphics.
 - ✓ Monitor Pro v7 still supports the Monitor Pro ECS graphics tools: Application Editor, WebClient, and Graph. Both Client Builder and the ECS graphics tools are installed on the same Monitor Pro client machine. To run ECS graphics, open Configuration Explorer, go to the **Application Properties** window (right-click the application and click **Properties**), and remove the **-nshared** flag from the **Flrunargs** field.
 - ✓ ECS graphics are not supported redundantly and are not Monitor Pro v7++ aware.

Server Only

When you are installing the server and client on separate computers, you install the device interfaces and Starter Application on the server machine only.

1. Monitor Pro v7 requires that a network adapter and Microsoft networking services be installed and running even if you do not plan to connect your Monitor Pro system to a network. If you do not have a Network Interface Card (NIC) installed, you must install Microsoft’s Loopback Adapter using one of the following procedures, depending on whether you have Windows 2000 or Windows NT 4.0, Service Pack 4 (or higher).

If you have Windows 2000 . . .	If you have Windows NT 4.0 . . .
<ol style="list-style-type: none"> a. Click Start > Settings > Control Panel. b. Double-click Add/Remove Hardware. c. Click Next to start the wizard. d. Select “Add/Troubleshoot a Device” and click Next. e. Select “Add a New Device” and click Next. f. Select “No, I want to select the hardware from a list” and click Next. g. Select “Network Adapters” and click Next. h. From the Manufacturer list, select “Microsoft.” i. From the Network Adapter list, select “Microsoft Loopback Adapter” and click Next. j. Click Next. k. Click Finish. 	<ol style="list-style-type: none"> a. Click Start > Settings > Control Panel. b. Click the Network icon. c. Click the Adapters tab. d. Click the Add button. e. From the Select Network Adapter window, select “MS Loopback Adapter.” f. Click OK. <p>Note: Some systems may request that you insert the <i>Windows NT 4.0 CD</i> so the system can access the appropriate files.</p>

2. Make sure the following Microsoft Networking Services are installed and running properly:
 - ✓ TCP/IP installed and bound to a Network Interface Card (NIC) (or Microsoft Loopback Adapter if the computer is running standalone)
 - ✓ Computer Browser
 - ✓ NetBIOS
 - ✓ Workstation services
 - ✓ Server services
 - ✓ Remote Procedure Call (RPC) service

3. If you are installing Monitor Pro on Windows 2000, Schneider Automation recommends that you disable Media Sense to prevent the network services from being disabled when you are not connected to a network.

Note: If you are installing Monitor Pro on Windows NT, you can skip this step.

Warning: Using Registry Editor incorrectly can cause serious problems that may require you to reinstall your operating system. Microsoft does not guarantee that problems resulting from the incorrect use of Registry Editor can be solved. Use Registry Editor at your own risk.

- ✓ Use Registry Editor (regedt32.exe) to view the following key in the registry:

HKEY_LOCAL_MACHINE\System\CurrentControlSet\Services\Tcpip\Parameters

- ✓ Add the following registry value:

Value Name: DisableDHCPMediaSense

Data Type: REG_DWORD

Data: 1 (True)

Note: For information about Media Sense, refer to the Microsoft Support Article Q239924 (<http://support.microsoft.com>).

4. Install Internet Explorer 4.x or 5.x (IE 6.x is not compatible).
5. If you plan to use SQL Server 2000 as your default database, install SQL Server 2000 from the appropriate *Microsoft SQL Server 2000 CD* (see below). (Refer to “Appendix A” of the *FactoryLink 7.0 Installation Guide* for detailed installation instructions.)
 - ✓ Depending on your platform, install SQL Server from the appropriate CD as follows:
 - Microsoft Windows NT Workstation: Install SQL Server 2000 from the *Microsoft SQL Server 2000 Personal Edition CD*.
 - Microsoft Windows NT Server: Install SQL Server 2000 from the *Microsoft SQL Server 2000 Standard Edition CD*.
 - Microsoft Windows 2000 Professional: Install SQL Server 2000 from the *Microsoft SQL Server 2000 Personal Edition CD*.
 - Microsoft Windows 2000 Server or Advanced Server: Install SQL Server 2000 from the *Microsoft SQL Server 2000 Standard Edition CD*.
 - ✓ SQL Server does not have to be installed on the same computer as Monitor Pro.
 - ✓ Schneider Automation recommends SQL Server as the primary database. You also need the SQL Server to use the Starter Application that is automatically installed with the Monitor Pro v7 software. (The Monitor Pro installation will install the Starter Application configured for Microsoft SQL Server or for dBase IV. If you plan to use any

Scenario 4—Upgrading Monitor Pro 2.1 to Monitor Pro v7++

database other than SQL Server or dBase IV, such as Oracle, you should select the “dBase IV” option during the system software installation in the next step.)

- ✓ Schneider Automation requires that you install SQL Server 2000 Service Pack 2, which is available as part of the Monitor Pro installation CD set.
 - ✓ If you already have SQL Server 2000 and SQL Server 2000 Service Pack 2 installed and available for Monitor Pro, you can skip this step.
6. Save archive copies of Monitor Pro 2.1 applications prior to installing Monitor Pro v7.

Caution: After you install Monitor Pro v7, the Monitor Pro 2.1 files will no longer be operational. All Monitor Pro 2.1 applications will need to be converted.

7. Install the Monitor Pro v7 system software (**server components**) from the *Client and Server CD*. (Refer to “Chapter 2” in the *FactoryLink 7.0 Installation Guide* for detailed instructions.)
- ✓ When the **License Configuration** window appears, you enter the serial number and configuration sequence from *Exhibit A* of your Monitor Pro v7 shipping package. Be sure to write down the registration code that is generated. You will use this code later when you contact Schneider Automation to authorize Monitor Pro. Schneider Automation recommends that you wait to authorize Monitor Pro until the system has been installed and tested. You have ten days to authorize Monitor Pro after installation.
 - ✓ The installation will give you a choice of installing the Starter Application configured for Microsoft SQL Server or for dBase IV. If you plan to use any database other than SQL Server or dBase IV, such as Oracle, you should select the “dBase IV” option.
 - ✓ There are two reboots during installation: The installation preps the system by installing some needed system files and then does a reboot very early in the install. Then the installation does another reboot after it finishes installing the system prior to installation of the device interfaces. Do not eject the installation CD between the reboots.
8. Install the Monitor Pro v7 device interfaces from the *Device Interfaces and Value-Added Products CD*. (Refer to “Chapter 4” in the *FactoryLink 7.0 Installation Guide* for detailed instructions.)

Note: You will skip this step if you de-selected the device interfaces option during the system software installation in the previous step.

9. After you install Monitor Pro v7 and Microsoft SQL Server 2000, set up a maximum memory limit on the SQL Server. The setup ensures that Monitor Pro has adequate memory resources. (Refer to the “Setting up Memory Size for Microsoft SQL Server 2000” procedure in “Chapter 6” of the *FactoryLink 7.0 Installation Guide* for detailed instructions.)
10. Install Service Pack 1 from the Monitor Pro v7 *Service Pack 1 CD*. (Refer to the *Getting Started with Monitor Pro v7 Service Pack 1 Including Run-Time Client* document for detailed instructions.)

11. Install the Monitor Pro v7++ system software from the *Monitor Pro v7++ CD*. (Refer to “Chapter 3” in the *FactoryLink++ User Guide* for detailed instructions.)

Caution: Do not install any of the value-added products (VAPs) from the *Device Interfaces and Value-Added Products CD* after installing Monitor Pro v7++ or the VAPs will overwrite the Monitor Pro v7++ files.

12. Run the DCOMWiz.exe utility from the Schneider Automation\Monitor Pro\FactoryLink\Bin directory on all server and client computers. This utility provides a quick way for you to ensure that you have the proper DCOM settings for running Monitor Pro.

Note: Schneider Automation recommends that you re-run the DCOMWiz.exe utility after any system update, such as service packs and patches.

13. Restore the QuickStart Server application. (Refer to “Chapter 3” in the *FactoryLink++ User Guide* for detailed instructions.)
14. Authorize Monitor Pro v7 using the registration code that was generated on the **License Configuration** window in Step 7. (Refer to “Chapter 5” in the *FactoryLink 7.0 Installation Guide* for detailed instructions.)

Note: Schneider Automation recommends that you wait to authorize Monitor Pro until the system has been installed and tested. You have ten days to authorize Monitor Pro after installation.

15. Convert existing Monitor Pro 2.1 applications using the FLConvert utility in Configuration Explorer or at the DOS command prompt. (Refer to the *FactoryLink 7.0 Conversion Guide* for detailed instructions.)
 - ✓ FLConvert does not convert ECS graphics to Client Builder graphics. You can either (1) use the ECS graphics as they are while running Graph.exe or (2) you can use the ECSSConvert utility to convert the ECS graphics to a Client Builder project. Although ECSSConvert handles most conversion issues, some features of ECS graphics cannot convert completely. You may need to use Client Builder to modify converted graphics.
 - ✓ Monitor Pro v7 still supports the Monitor Pro ECS graphics tools: Application Editor, WebClient, and Graph. Both Client Builder and the ECS graphics tools are installed on the same Monitor Pro client machine. To run ECS graphics, open Configuration Explorer, go to the **Application Properties** window (right-click the application and click **Properties**), and remove the **-nshared** flag from the **Flrunargs** field.
 - ✓ ECS graphics are not supported redundantly and are not Monitor Pro v7++ aware.

Client Only

1. Monitor Pro v7 requires that a network adapter and Microsoft networking services be installed and running even if you do not plan to connect your Monitor Pro system to a network. If you do not have a Network Interface Card (NIC) installed, you must install Microsoft’s Loopback Adapter using one of the following procedures, depending on whether you have Windows 2000 or Windows NT 4.0, Service Pack 4 (or higher).

If you have Windows 2000 . . .	If you have Windows NT 4.0 . . .
<ol style="list-style-type: none"> a. Click Start > Settings > Control Panel. b. Double-click Add/Remove Hardware. c. Click Next to start the wizard. d. Select “Add/Troubleshoot a Device” and click Next. e. Select “Add a New Device” and click Next. f. Select “No, I want to select the hardware from a list” and click Next. g. Select “Network Adapters” and click Next. h. From the Manufacturer list, select “Microsoft.” i. From the Network Adapter list, select “Microsoft Loopback Adapter” and click Next. j. Click Next. k. Click Finish. 	<ol style="list-style-type: none"> a. Click Start > Settings > Control Panel. b. Click the Network icon. c. Click the Adapters tab. d. Click the Add button. e. From the Select Network Adapter window, select “MS Loopback Adapter.” f. Click OK. <p>Note: Some systems may request that you insert the <i>Windows NT 4.0 CD</i> so the system can access the appropriate files.</p>

2. Make sure the following Microsoft Networking Services are installed and running properly:
 - ✓ TCP/IP installed and bound to a Network Interface Card (NIC) (or Microsoft Loopback Adapter if the computer is running standalone)
 - ✓ Computer Browser
 - ✓ NetBIOS
 - ✓ Workstation services
 - ✓ Server services
 - ✓ Remote Procedure Call (RPC) service

3. If you are installing Monitor Pro on Windows 2000, Schneider Automation recommends that you disable Media Sense to prevent the network services from being disabled when you are not connected to a network.

Note: If you are installing Monitor Pro on Windows NT, you can skip this step.

Warning: Using Registry Editor incorrectly can cause serious problems that may require you to reinstall your operating system. Microsoft does not guarantee that problems resulting from the incorrect use of Registry Editor can be solved. Use Registry Editor at your own risk.

- ✓ Use Registry Editor (regedt32.exe) to view the following key in the registry:

HKEY_LOCAL_MACHINE\System\CurrentControlSet\Services\Tcpip\Parameters

- ✓ Add the following registry value:

Value Name: DisableDHCPMediaSense

Data Type: REG_DWORD

Data: 1 (True)

Note: For information about Media Sense, refer to the Microsoft Support Article Q239924 (<http://support.microsoft.com>).

4. Install Internet Explorer 4.x or 5.x (IE 6.x is not compatible).
5. Install the Monitor Pro v7 system software (**client components**) from the *Client and Server CD*. (Refer to “Chapter 2” in the *FactoryLink 7.0 Installation Guide* for detailed instructions.)
 - ✓ When the **License Configuration** window appears, enter the same serial number and configuration sequence that you entered in the same window during the Server Only installation. (This is the serial number and configuration sequence from *Exhibit A* of your Monitor Pro v7 shipping package.)
 - ✓ When the **Monitor Pro Licensing Utility** window appears, enter the host name or IP address of the server to which the client will point.
 - ✓ Client Builder is installed automatically. (Only the full Client Builder project is installed; no compressed file is provided as an archive. Schneider Automation recommends that you save the project as an archive (.cba) after installation and before working in the project. You can save the project in two ways: (1) using the FVArchive.exe utility in the Schneider Automation\Monitor Pro\Client Builder\Program directory or (2) in Client Builder, you can use **Tools > Application > Save\Restore Project**.)
 - ✓ There are two reboots during installation: The installation preps the system by installing some needed system files and then does a reboot very early in the install. Then the installation does another reboot after it finishes installing the system prior to installation of the device interfaces. Do not eject the installation CD between the reboots.

Scenario 4—Upgrading Monitor Pro 2.1 to Monitor Pro v7++

6. Install Service Pack 1 from the Monitor Pro v7 *Service Pack 1 CD*. (Refer to the *Getting Started with Monitor Pro v7 Service Pack 1 Including Run-Time Client* document for detailed instructions.)
7. Install the Monitor Pro v7++ system software from the *Monitor Pro v7++ CD*. (Refer to “Chapter 3” in the *FactoryLink++ User Guide* for detailed instructions.)

Caution: Do not install any of the value-added products (VAPs) from the *Device Interfaces and Value-Added Products CD* after installing Monitor Pro v7++ or the VAPs will overwrite the Monitor Pro v7++ files.

8. Run the DCOMWiz.exe utility from the Schneider Automation\Monitor Pro\FactoryLink\Bin directory on all server and client computers. This utility provides a quick way for you to ensure that you have the proper DCOM settings for running Monitor Pro.

Note: Schneider Automation recommends that you re-run the DCOMWiz.exe utility after any system update, such as service packs and patches.

9. Restore the QuickStart Client application. (Refer to “Chapter 3” in the *FactoryLink++ User Guide* for detailed instructions.)

WebClient

Although Client Builder is automatically installed with Monitor Pro v7, if you wish, you can use the WebClient product instead of using Client Builder. WebClient gives you the capability to remotely monitor and control Monitor Pro applications using ECS graphics. WebClient can be run standalone or dropped into an ActiveX container such as Internet Explorer or Client Builder. The WebClient server tasks are installed with the Monitor Pro base system. You can install the client-side components of WebClient from a distribution CD or over a network.

Refer to the *FactoryLink 7.0 WebClient User Guide* for information about using WebClient and for detailed installation instructions.

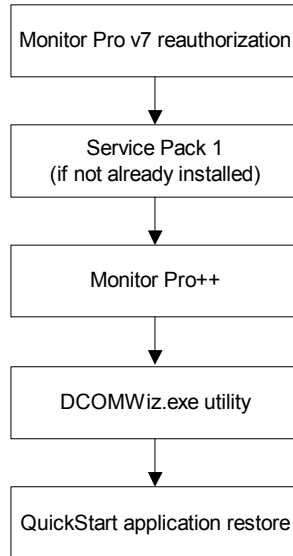
Note: WebClient is not redundant and has not been upgraded to support Monitor Pro v7++ features.

Scenario 5

Converting Monitor Pro v7 to Monitor Pro v7++

Scenario 5—Converting Monitor Pro v7 to Monitor Pro v7++

Installation Sequence for Scenario 5 -- Converting Monitor Pro v7 to Monitor Pro++



Scenario 5—Converting Monitor Pro v7 to Monitor Pro v7++

If you are converting Monitor Pro on a single computer, follow the “Server/Client” procedure. If you are converting Monitor Pro on separate computers, follow the “Server Only” and “Client Only” procedures.

Server/Client

Monitor Pro v7 requires that a network adapter and Microsoft networking services be installed and running even if you do not plan to connect your Monitor Pro system to a network.

Since you already have Monitor Pro v7 installed and running properly, it is assumed that the following configurations are true:

- ✓ Network Interface Card (or Microsoft Loopback Adapter) is installed.
 - ✓ Necessary Microsoft networking services are installed and running properly.
 - ✓ Internet Explorer 4.x or 5.x is installed.
 - ✓ Media Sense is disabled (if you are installing on Windows 2000).
 - ✓ SQL Server 2000 is installed (if you are using SQL Server).
1. Reauthorize Monitor Pro v7 by performing the following steps:
 - a. Click **Start > Settings > Control Panel**.
 - b. Double-click **Add/Remove Programs**.
 - c. From the Install/Uninstall tab, select “Monitor Pro v7” and click **Add/Remove**.
 - d. When you are asked if you would like to Reauthorize or Uninstall, click **Reauthorize**.
 - e. Follow the prompts and when the **License Configuration** window appears, replace the Monitor Pro v7 serial number and configuration sequence with the Monitor Pro v7++ serial number and configuration sequence. Be sure to write down the registration code that is generated. You can now authorize Monitor Pro v7++ using the registration code or you may wait until later (up to 10 days). (Refer to “Chapter 5” in the *FactoryLink 7.0 Installation Guide* for detailed instructions.)
 - f. Follow the prompts for the remainder of the reauthorization wizard.
 2. If you do not already have Service Pack 1, then you need to install Service Pack 1 from the Monitor Pro v7 *Service Pack 1 CD*. (Refer to the *Getting Started with Monitor Pro v7 Service Pack 1 Including Run-Time Client* document for detailed instructions.)
 3. Install the Monitor Pro v7++ system software from the *Monitor Pro v7++ CD*. (Refer to “Chapter 3” in the *FactoryLink++ User Guide* for detailed instructions.)

Caution: Do not install any of the value-added products (VAPs) from the *Device Interfaces and Value-Added Products CD* after installing Monitor Pro v7++ or the VAPs will overwrite the Monitor Pro v7++ files.

Scenario 5—Converting Monitor Pro v7 to Monitor Pro v7++

4. Run the DCOMWiz.exe utility from the Schneider Automation\Monitor Pro\FactoryLink\Bin directory on all server and client computers. This utility provides a quick way for you to ensure that you have the proper DCOM settings for running Monitor Pro.

Note: Schneider Automation recommends that you re-run the DCOMWiz.exe utility after any system update, such as service packs and patches.

5. Restore the QuickStart Server application. (Refer to “Chapter 3” in the *FactoryLink++ User Guide* for detailed instructions.)
6. Restore the QuickStart Client application. (Refer to “Chapter 3” in the *FactoryLink++ User Guide* for detailed instructions.)

Server Only

Monitor Pro v7 requires that a network adapter and Microsoft networking services be installed and running even if you do not plan to connect your Monitor Pro system to a network.

Since you already have Monitor Pro v7 installed and running properly, it is assumed that the following configurations are true:

- ✓ Network Interface Card (or Microsoft Loopback Adapter) is installed.
 - ✓ Necessary Microsoft networking services are installed and running properly.
 - ✓ Internet Explorer 4.x or 5.x is installed.
 - ✓ Media Sense is disabled (if you are installing on Windows 2000).
 - ✓ SQL Server 2000 is installed (if you are using SQL Server).
1. Reauthorize Monitor Pro v7 by performing the following steps:
 - a. Click **Start > Settings > Control Panel**.
 - b. Double-click **Add/Remove Programs**.
 - c. From the Install/Uninstall tab, select “Monitor Pro v7” and click **Add/Remove**.
 - d. When you are asked if you would like to Reauthorize or Uninstall, click **Reauthorize**.
 - e. Follow the prompts and when the **License Configuration** window appears, replace the Monitor Pro v7 serial number and configuration sequence with the Monitor Pro v7++ serial number and configuration sequence. Be sure to write down the registration code that is generated. You can now authorize Monitor Pro v7++ using the registration code or you may wait until later (up to 10 days). (Refer to “Chapter 5” in the *FactoryLink 7.0 Installation Guide* for detailed instructions.)
 - f. Follow the prompts for the remainder of the reauthorization wizard.
 2. If you do not already have Service Pack 1, then you need to install Service Pack 1 from the Monitor Pro v7 *Service Pack 1 CD*. (Refer to the *Getting Started with Monitor Pro v7 Service Pack 1 Including Run-Time Client* document for detailed instructions.)
 3. Install the Monitor Pro v7++ system software from the *Monitor Pro v7++ CD*. (Refer to “Chapter 3” in the *FactoryLink++ User Guide* for detailed instructions.)

Caution: Do not install any of the value-added products (VAPs) from the *Device Interfaces and Value-Added Products CD* after installing Monitor Pro v7++ or the VAPs will overwrite the Monitor Pro v7++ files.
 4. Run the DCOMWiz.exe utility from the Schneider Automation\Monitor Pro\FactoryLink\Bin directory on all server and client computers. This utility provides a quick way for you to ensure that you have the proper DCOM settings for running Monitor Pro.

Scenario 5—Converting Monitor Pro v7 to Monitor Pro v7++

Note: Schneider Automation recommends that you re-run the DCOMWiz.exe utility after any system update, such as service packs and patches.

5. Restore the QuickStart Server application. (Refer to “Chapter 3” in the *FactoryLink++ User Guide* for detailed instructions.)

Client Only

Monitor Pro v7 requires that a network adapter and Microsoft networking services be installed and running even if you do not plan to connect your Monitor Pro system to a network.

Since you already have Monitor Pro v7 installed and running properly, it is assumed that the following configurations are true:

- ✓ Network Interface Card (or Microsoft Loopback Adapter) is installed.
 - ✓ Necessary Microsoft networking services are installed and running properly.
 - ✓ Internet Explorer 4.x or 5.x is installed.
 - ✓ Media Sense is disabled (if you are installing on Windows 2000).
 - ✓ SQL Server 2000 is installed (if you are using SQL Server).
1. Reauthorize Monitor Pro v7 by performing the following steps:
 - a. Click **Start > Settings > Control Panel**.
 - b. Double-click **Add/Remove Programs**.
 - c. From the Install/Uninstall tab, select “Monitor Pro v7” and click **Add/Remove**.
 - d. When you are asked if you would like to Reauthorize or Uninstall, click **Reauthorize**.
 - e. Follow the prompts and when the **License Configuration** window appears, replace the Monitor Pro v7 serial number and configuration sequence with the Monitor Pro v7++ serial number and configuration sequence. Be sure to write down the registration code that is generated. You can now authorize Monitor Pro v7++ using the registration code or you may wait until later (up to 10 days). (Refer to “Chapter 5” in the *FactoryLink 7.0 Installation Guide* for detailed instructions.)
 - f. Follow the prompts and when the **Monitor Pro Licensing Utility** window appears, enter the host name or IP address of the server to which the client will point.
 - g. Follow the prompts for the remainder of the reauthorization wizard.
 2. If you do not already have Service Pack 1, then you need to install Service Pack 1 from the Monitor Pro v7 *Service Pack 1 CD*. (Refer to the *Getting Started with Monitor Pro v7 Service Pack 1 Including Run-Time Client* document for detailed instructions.)
 3. Install the Monitor Pro v7++ system software from the *Monitor Pro v7++ CD*. (Refer to “Chapter 3” in the *FactoryLink++ User Guide* for detailed instructions.)

Caution: Do not install any of the value-added products (VAPs) from the *Device Interfaces and Value-Added Products CD* after installing Monitor Pro v7++ or the VAPs will overwrite the Monitor Pro v7++ files.

Scenario 5—Converting Monitor Pro v7 to Monitor Pro v7++

4. Run the DCOMWiz.exe utility from the Schneider Automation\Monitor Pro\FactoryLink\Bin directory on all server and client computers. This utility provides a quick way for you to ensure that you have the proper DCOM settings for running Monitor Pro.

Note: Schneider Automation recommends that you re-run the DCOMWiz.exe utility after any system update, such as service packs and patches.

5. Restore the QuickStart Client application. (Refer to “Chapter 3” in the *FactoryLink++ User Guide* for detailed instructions.)

WebClient

Although Client Builder is automatically installed with Monitor Pro v7, if you wish, you can use the WebClient product instead of using Client Builder. WebClient gives you the capability to remotely monitor and control Monitor Pro applications using ECS graphics. WebClient can be run standalone or dropped into an ActiveX container such as Internet Explorer or Client Builder. The WebClient server tasks are installed with the Monitor Pro base system. You can install the client-side components of WebClient from a distribution CD or over a network.

Refer to the *FactoryLink 7.0 WebClient User Guide* for information about using WebClient and for detailed installation instructions.

Note: WebClient is not redundant and has not been upgraded to support Monitor Pro v7++ features.

Appendix A—Installation Resources

To help you with the installation of Monitor Pro, you have access to several installation, documentation, and support resources. This appendix lists the CDs and documents that you will use to install Monitor Pro v7, Monitor Pro v7++, and SQL Server 2000. It tells you whom to contact if you have questions about your installation or about Monitor Pro patches.

Installation CDs

The following installation CDs are included in the Monitor Pro v7 and Monitor Pro v7++ shipping packages:

Monitor Pro v7

- ✓ *Client and Server CD*
- ✓ *Device Interfaces and Value-Added Products CD*
- ✓ *Microsoft SQL Server 7 CD*
- ✓ *Service Pack 1 CD*

Monitor Pro v7++

- ✓ *Monitor Pro v7++ CD*

SQL Server 2000 Pack

This pack is provided with each Monitor Pro v7 or Monitor Pro v7++ software purchase if the customer does not already have SQL Server 2000 from an earlier Monitor Pro purchase.

- ✓ *Microsoft SQL Server 2000 Personal Edition CD*
- ✓ *Microsoft SQL Server 2000 Standard Edition CD*
- ✓ *Microsoft SQL Server 2000 Service Pack 2*

Installation Documentation

The following documentation ships with Monitor Pro v7 and Monitor Pro v7++ and is installed in two directories: Schneider Automation\Monitor Pro\Documentation\ and Schneider Automation\Monitor Pro v7++\User Guide. Make sure that you refer to the proper documentation during your installation process.

Monitor Pro v7

- ✓ *Monitor Pro v7 Release Notes*
- ✓ *FactoryLink 7.0 Installation Guide*
- ✓ *Getting Started with Monitor Pro v7*
- ✓ *Getting Started with Monitor Pro v7 Service Pack 1 Including Run-Time Client*
- ✓ *FactoryLink 7.0 WebClient User Guide*

Appendix A—Installation Resources

- ✓ *FactoryLink 7.0 Conversion Guide*
- ✓ *Getting Started with FactoryLink 7.0*
- ✓ *Monitor Pro v7 Service Pack 1 Release Notes*

Monitor Pro v7++

- ✓ *Getting Started with Monitor Pro v7++*
- ✓ *Monitor Pro v7++ Release Notes*
- ✓ *FactoryLink++ User Guide*

Installation Questions

If you have questions regarding your particular installation, contact Schneider Automation.

Monitor Pro Patches

Contact Schneider Automation for information about Monitor Pro patches.