

# FEATURE BLAST



## Andover Continuum RoamIO<sub>2</sub> Infinet Service Tool

### Product Description

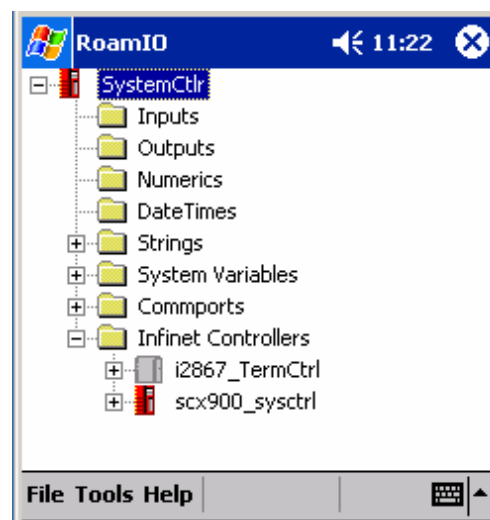
The RoamIO<sub>2</sub> Service Tool is a compact hardware adapter with software applications, which allow you to quickly connect to any Andover Continuum system using a Pocket PC or laptop. Designed to clip onto a technician's belt, this tool gives you the freedom of mobility through a local connection to an Infinet field bus.

The RoamIO<sub>2</sub> Service Tool comes with software to run the adapter as an Infinet Service Tool on either a Windows Pocket PC or laptop. The Infinet Service Tool discovers and edits Andover Continuum Infinet controllers.

### Auto-Discover Infinet Controllers

Discover every Andover Continuum Infinet controller on the network with a single click of a button. The explorer-like tree provides a great visualization of the entire Andover Continuum system.

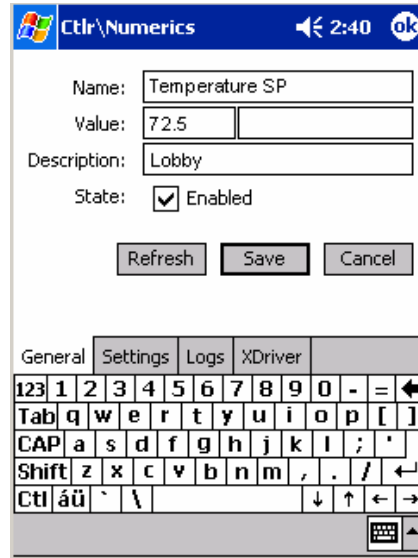
*RoamIO<sub>2</sub> makes Andover Continuum system service simple.*



## View and Edit Points

Expanding the controller reveals the objects within the device. Switching to the details view displays all of the Andover Continuum attributes of the selected object allowing you to edit writable values to enable/disable, change values, set descriptions, and so on.

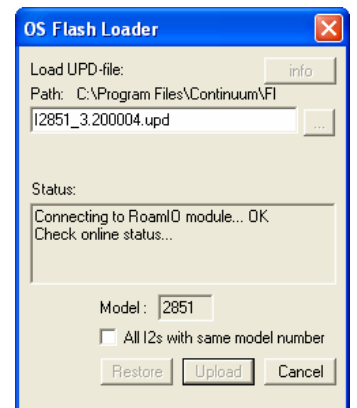
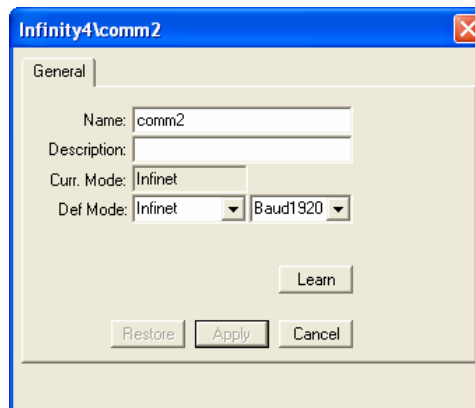
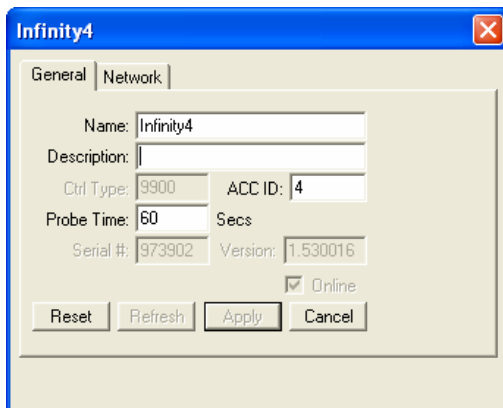
*Local control makes service easy.*



## System Management Tools

The Infinet Service Tool provides management tools beyond network exploration and point editing. These management tools include a utility for updating operating systems for Andover Continuum controllers and the RoamIO<sub>2</sub> hardware, Andover Continuum backup to flash functions, a “learn” function for Andover Continuum controllers on a field bus, a controller warm/cold restart function, and a controller time/date editor.

*Keep your Andover Continuum system up to date and configured properly.*



## Easy Controller Connection

The RoamIO<sub>2</sub> hardware comes with an RJ-11 cable and a set of service port adapters. Simply connect the RoamIO<sub>2</sub> to the built-in service port on any Andover Continuum controller or room sensor equipped with a service jack using the supplied RJ-11 cable and appropriate adapter. Up to four RoamIO<sub>2</sub> Service Tools can be connected to the Infinet field bus simultaneously.

*Each Andover Continuum controller is a portal into the system.*

## Bluetooth Wireless Connection

Connect your Pocket PC or laptop to the RoamIO<sub>2</sub> Service Tool wirelessly using the standard onboard Bluetooth wireless adapter. A wired serial connection is also available for computers without Bluetooth.

*No longer are you tethered to the controller while balancing yourself on the top of a ladder; the wireless connection gives you the mobility you need to work efficiently.*

## Feature History Table

Infinet Service Tool Feature Upgrades	1.0	1.1
Infinet Device Auto-Discovery	•	•
View/Edit Andover Continuum Objects	•	•
Set Date/Time	•	•
Perform Andover Continuum Learn	•	•
Update Controller OS	•	•
Rename Objects	•	•
Backup to Flash Management	•	•
RoamIO <sub>2</sub> -to-Controller Service Port Connection	•	•
RoamIO <sub>2</sub> -to-PC/PocketPC Wireless Bluetooth Connection		•

---

Copyright © 2006, TAC

All brand names, trademarks and registered trademarks are the property of their respective owners. Information contained within this document is subject to change without notice. All rights reserved.

02/06



[www.tac.com](http://www.tac.com)

