

FEATURE BLAST



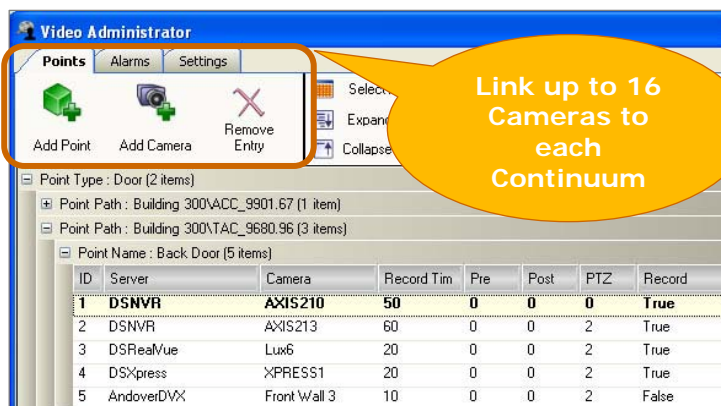
CyberStation and web.Client v1.9

Product Description

Andover Continuum 1.9 is a new version of CyberStation and web.Client software. Version 1.9 is designed to provide Microsoft Vista support along with several new features to build on v1.8x's security-focused offering to ensure a safe and secure environment for any given circumstance. Additionally, v1.9 introduces direct support for third party drivers using the BACnet bCX1 Controller/Router. Revision 1.9 is a paid upgrade for all Andover Continuum systems (i.e. v1.8x or below).

Video Monitor

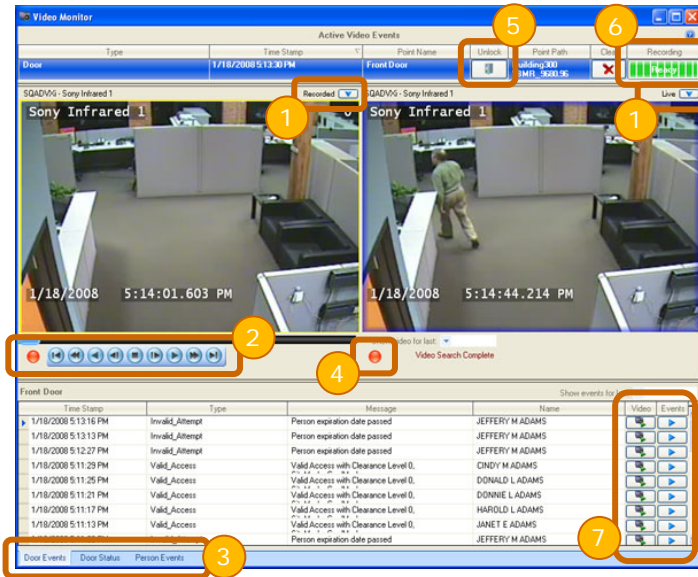
Video Monitor provides a way to link each Continuum object to 16 cameras residing on Pelco video servers - specifically Pelco DS RealVue, DS NVR, DVXi and DVX video servers.



When your security needs call for direct control of video server recording, you can call on Continuum's Video Monitor. Video Monitor easily links Continuum objects such as doors, intrusion sensors and fire monitoring points to cameras on Pelco video servers. This makes it possible to instantly show live and recorded video feeds on a workstation after an alarm event.

On alarm, Video Monitor can send record commands to the Video Servers that host the cameras, which may include Pan-Tilt-Zoom (PTZ) preset calls so that the cameras are positioned towards the incident. Each camera can be set to record for a specific time duration for the event. The resulting video clip will be that event duration plus any pre- and/or post- event time that may be set at the Video Server. This guarantees that a suitable video clip will be available for review afterwards.

Through Video Monitor, Continuum can also receive alarm events from the Video Server. The Video Monitor Administrator application lets you determine which video server to record Video Server offline alarms as well as camera loss and motion detection alarms from each individual camera.

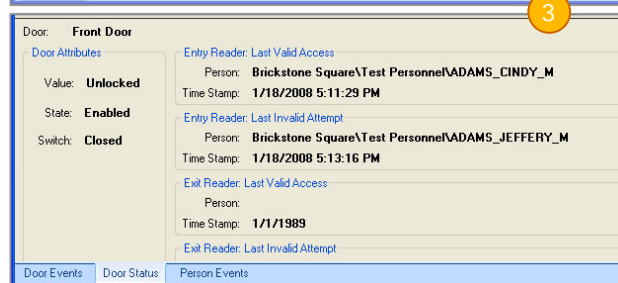


The monitoring capabilities of Video Monitor provide the operator with all the tools necessary to investigate:

1. See live and recorded video simultaneously from one of the sixteen linked cameras
2. Control video playback via VCR-like controls
3. View Door Events, Door Status, and Person Events
4. Invoke manual recording with a single button
5. Control door locks for momentary unlocks
6. View status of Video Recording
7. Search for video clips by alarm, door or person events
8. View personnel details and edit records
9. Position PTZ cameras through presets or manual control



Time Stamp	Type	Message	Name	Video	Events
1/18/2008 5:13:16 PM	Invalid_Attempt	Person expiration date passed	JEFFERY M ADAMS	[Video]	[Events]
1/18/2008 5:13:13 PM	Invalid_Attempt	Person expiration date passed	JEFFERY M ADAMS	[Video]	[Events]
1/18/2008 5:12:27 PM	Invalid_Attempt	Person expiration date passed	JEFFERY M ADAMS	[Video]	[Events]
1/18/2008 5:11:29 PM	Valid_Access	Valid Access with Clearance Level 0, SiteMode+CardMode	CINDY M ADAMS	[Video]	[Events]
1/18/2008 5:11:25 PM	Valid_Access	Valid Access with Clearance Level 0, SiteMode+CardMode	DONALD L ADAMS	[Video]	[Events]
1/18/2008 5:11:21 PM	Valid_Access	Valid Access with Clearance Level 0, SiteMode+CardMode	DONNIE L ADAMS	[Video]	[Events]
1/18/2008 5:11:17 PM	Valid_Access	Valid Access with Clearance Level 0, SiteMode+CardMode	HAROLD L ADAMS	[Video]	[Events]
1/18/2008 5:11:13 PM	Valid_Access	Valid Access with Clearance Level 0, SiteMode+CardMode	JANET E ADAMS	[Video]	[Events]
1/18/2008 5:11:09 PM	Invalid_Attempt	Person expiration date passed	JEFFERY M ADAMS	[Video]	[Events]
1/18/2008 5:11:05 PM	Valid_Access	Valid Access with Clearance Level 0, SiteMode+CardMode	JOHN R ADAMS	[Video]	[Events]



If a new event occurs during the review of a previously launched session, it is added to the event queue. The operator may continue with his current session or choose to switch to one of the queued events. This way, the operator is always in control of the investigation activities.

Automatically launch live and recorded video from on a workstation after an alarm event.

DigitalSENTRY Enterprise Video Acquisition Unit (VAU) Support

Adding to Continuum's support for Pelco video products, version 1.9 is now compatible with the DigitalSENTRY Enterprise Video Acquisition Unit (VAU), which also uses the iVEX video compression technology. Cameras connected to the video system via a VAU are visible in the associated Video Server object's camera dropdown list. DS Enterprise VAU cameras are compatible with both Continuum Video Layouts and the new Video Monitor application.

Expand your Pelco video integration into Andover Continuum using the DigitalSENTRY VAUs.

Microsoft Vista Support

CyberStation and web.Client v1.9 software is now supported on the Microsoft Vista operating system (OS). Meeting with the latest emerging IT requirements for compatibility with MS Vista, v1.9 has been successfully recompiled and tested with Microsoft Vista Business and Microsoft Vista Ultimate. web.Client browser machines with the MS Vista OS can connect to the server via MS Internet Explorer 7.0.

Meet the latest IT requirements with Continuum support for MS Vista.

Microsoft SQL Express Support

CyberStation v1.9 supports Microsoft SQL Express for Single-User (SU), or "Stand Alone", installations. If performing an upgrade from a previous version using MSDE 2000 (i.e. v1.81 or below), the database application will automatically be upgraded to Microsoft SQL Express during the software installation/upgrade process.

Keep your stand-alone system up to date with the latest Microsoft database product.

Supports BACnet bCX1 with 2nd Generation Continuum XDrivers

CyberStation v1.9 supports the new BACnet bCX1 XDriver feature, specifically for 2nd Generation Continuum XDrivers. Allowing direct communications between BACnet and third-party devices eliminates the need for additional network controllers required for driver support. This also allows for project growth to include more field devices from Schneider Electric and third-parties to complement the Andover Continuum system. Rather than focus on the HVAC system, the solution can expand to encompass other functions of the customer's site (e.g. lighting, power management, smoke control). Use the XDriver support on the BACnet bCX1 to integrate with Schneider products for lighting control or power monitoring for a complete building automation solution.



Please refer to the Third Party Communications Interfaces and Protocols datasheet for a full list of 2nd Generation Continuum XDrivers.

Note: BACnet bCX1 Series v4.500047 is required to support this add-on feature.

Integrate Andover Continuum's BACnet system directly to third party devices for a simple and complete building automation solution!

HSPD-12/FIPS-201 Support*

TAC continues its commitment to supporting the new United States Homeland Security Presidential Directive (HSPD-12) and Federal Information Processing Standard (FIPS-201) with a software revision to import data from a FIPS approved Identity Management System (IDMS) / Personnel Identity Verification (PIV) middleware system.

The FIPS support in Continuum v1.9 permits data to be synchronized between CyberStation and the IDMS/PIV systems and also distributes FIPS compliant data to controllers for access control decisions. FIPS compliant access control requires all NetController II, ACX Series, and AC-1 Family units to be upgraded to firmware that is FIPS compatible.

Transitional "Dual" Card*

Transitional cards that were partially supported in CyberStation 1.81 have now been fully implemented. With v1.9, a second credential (e.g. Prox or FIPS-PIV card) assigned to each personnel object may be downloaded to a controller that supports dual credentials. This feature is useful for sites transitioning from one card access system to a FIPS-compliant system. Use of dual credentials may be temporary or indefinite.

Note: This feature may also be used at non-FIPS sites and does not require the FIPS option when used solely with non-FIPS credentials.

Easily transition sites from one personnel credential type to another with Continuum's "dual" card support.

Personnel Import Utility (PIU) Enhancements

The Personnel Import Utility launched in version 1.8 is now enhanced to allow XML as a data source. TAC has included a standard XSLT transformation script that integrates with the PIV middleware from ImageWare Systems, TAC's preferred and tested PIV system for FIPS installations. The PIU synchronizes import and export of personnel data using XML. The PIU may

exchange data from other systems that utilize XML by editing the XSLT transforms.

Use standards-based XML to import personnel objects.

- * Andover Continuum NetController II v2.1 and ACX Series v1.1 are required to support this feature. Any AC-1 Series module will also need to be updated with its FIPS compatible flash file. The AC-1 and AC-1A require v25; the AC-1 Plus requires v29.

Activation Date added to Personnel Records

Activation Date is now a new attribute in Personnel Records. In the past, a personnel record is active as soon as configured (unless otherwise specified and manually changed when desired). This new attribute allows for a personnel record to be created and configured but the access privileges are not valid until the specified activation date occurs; activation is automatic upon the activation date.

Note: This new attribute is only supported on the ACX Series (Models 5720 and 5740) and NetController II (Model 9680).

Further secure your site by restricting personnel access until a defined activation date.

New Door Attributes for Keypad Input Custom Sequences for the ACX Series

Create custom entry sequences that would normally require custom firmware in similar products by other vendors. The new "KeypadCommand" and "KeypadString" Door attributes may be used to provide additional control at the door simply by creating a Continuum Plain English program that references these attributes. After presenting his badge and valid access has been granted, the operator has up to three seconds to enter a custom code using the keypad. That code can be used to issue any number of commands: turns the lights on or off, hold the door for extended periods or enter a reason code for entering that area – whatever the application, these attributes have you covered!

Note: This feature is only supported on the ACX Series (Models 5720 and 5740)

Customize applications to trigger upon valid access events.

Feature History Table

Andover Continuum Feature Upgrades	1.71	1.73	1.74	1.8	1.81	1.9
Faster data retrieval for Pinpoint and web Pinpoint	•	•	•	•	•	•
Enhanced Alarm delivery	•	•	•	•	•	•
web.Client Continuous refresh option for web.Client Pinpoint Graphics	•	•	•	•	•	•
web.Client – launch editors from web.Client Pinpoint Graphic	•	•	•	•	•	•
Enhanced International Support	•	•	•	•	•	•
Enhanced BACnet Device management		•	•	•	•	•
Efficient Data Retrieval for BACnet Graphics		•	•	•	•	•
BACnet Protocol revision 4 (ASHRAE 135-2004) support		•	•	•	•	•
BACnet Schedule Option to purge past exception schedule events		•	•	•	•	•
BACnet Trend Object support		•	•	•	•	•
BACnet Loop Object support		•	•	•	•	•
BACnet Backup & Restore support		•	•	•	•	•
BACnet Save from Controller support		•	•	•	•	•
Support for Listviews in Reports		•	•	•	•	•
Plain English support from "SendEmail" keyword		•	•	•	•	•
Support for Infinity bCX1 (9640 version 1.1) XDrivers		•	•	•	•	•
web.Client – Support for new BACnet objects (Trend, Loop)		•	•	•	•	•
web.Client – Full migration to .NET simplifies connection		•	•	•	•	•
web.Client – Firewall friendly connections for Pinpoint graphic files		•	•	•	•	•
web.Client – Default Log On Object		•	•	•	•	•
web.Client-Launch object editors from a Listview		•	•	•	•	•
MS SQL Server 2005 Support			•	•	•	•
MS .NET Framework 2.0 Support			•	•	•	•
web.Client support of adjustable communications port number			•	•	•	•
web.Client support for "SSL"			•	•	•	•
Pinpoint "Fast Panel" load option			•	•	•	•
Area Lockdown*				•	•	•
Condition "Threat" Level Based Access Rights*				•	•	•
LDAP-powered Personnel Import Utility				•	•	•
Customizable "Personnel Manager"				•	•	•
Updated Badging Utility				•	•	•
Support for HID Corporate-1000 Cards*				•	•	•
Support for 128 -1024 Security Groups				•	•	•
Support for NetController II				•	•	•
Support for Ethernet ACX Series access controllers				•	•	•
Support for IPSec/IKE Encryption between Ethernet Devices*				•	•	•
web.Client – Password management				•	•	•
web.Client – Support for international characters				•	•	•
web.Client – Issue Temporary / Restore Permanent access cards				•	•	•
Pelco DS RealVue & DS NVR Video support					•	•
Microsoft Windows Authentication					•	•
CFR Enhancements: Second User Sign-Off					•	•
Personnel Import Utility (PIU) Enhancements: XML Import					•	•
MS Vista support						•
MS SQL Express support						•
Video Monitor						•
DigitalSENTRY Enterprise Video Acquisition Unit (VAU) support						•
BACnet bCX1 (4040) XDriver support						•
HSPD-12/FIPS 201 option*						•
Second/Transitional "Dual" Card support (including FIPS PIV Card format)*						•
Activation Date added to Personnel Records*						•
New Door Attributes for Keypad Input Custom Sequences (ACX Series only)						•

* Andover Continuum NetController II or ACX Series Access Controller is required to support this feature.

Copyright © 2008, TAC

All brand names, trademarks and registered trademarks are the property of their respective owners. Information contained within this document is subject to change without notice. All rights reserved.

FB-C-CYBER-WEBC-V1_9-A4