

Chapter 10

Load, Record, Verify

The Load, Record and Verify (LRV) tape or disk lets you:

Load programs and user logic into the 984's memory.

Make back-ups.

Verify their accuracy.

The LRV Menu Tree at the end of this chapter diagrams the LRV menu options and their interconnecting paths.

LRV Disk And Tape Loader Tape

Features

The LRV uses the softkeys available on the P190 and the function keys on the personal computer keyboard to input user choices to its menus.

Load loads a previously recorded program, including the configuration table and traffic cop, into the 984's memory. Memory size must be sufficient to store all the logic.

Record Backs-up a 984 memory onto tape or disk.

Relocate Logic Loads the user logic only (no configuration table and no traffic cop) from a previously recorded program into the 984's memory. This is usually done when copying programs from another controller, or when replacing user logic over a new configuration table and traffic cop.

Verify Compares a 984's memory against a back-up. This verifies that data that has been loaded or backed up has been done so accurately. This function can also be used to verify that there has been no corruption of 984 memory.

Start Starts the controller solving logic and updating I/O.

Stop Stops the controller from solving logic and updating I/O.

Evaluate Tape Tests tapes for integrity (P190 only).

- **CAUTION** The Evaluate Tape function erases all data on the tape.

LRV Examples

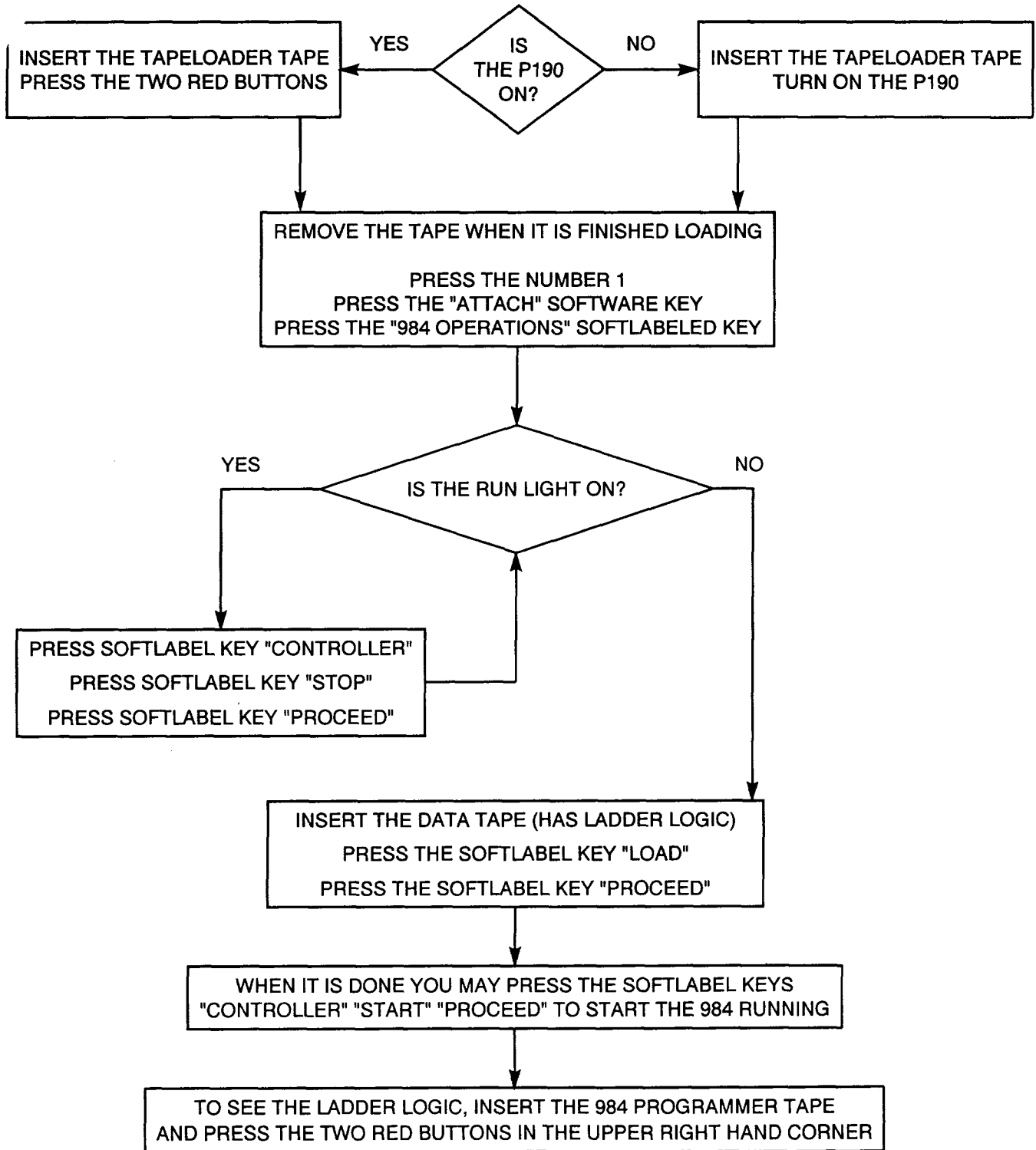
Load Procedure

- Step 1** (P190) Load a working copy of the Tape Loader tape into the the P190 and press the red keys, <INIT> and <INIT LOCK>. (Personal Computer) Select LRV from the Modicon Main Executive menu or select the reset level menu by pressing <ALT-F9>.
- Step 2** After the program loads and the menu is displayed, enter the number of the unit to which you want to attach.
- Step 3** Press the softkey labeled <ATTACH UNIT#>.
- Step 4** Press the softkey labeled <984 OPERATIONS>.
- Step 5** Press the softkey labeled <CONTROLLER OPERATIONS>.
- Step 6** Press the softkey labeled <STOP 984>.
- Step 7** Press the softkey labeled <PROCEED>.
- Step 8** Press the softkey labeled <LOAD 984>.
- Step 9** (P190) Remove the tape loader tape and insert the (previously backed up) tape to be loaded. (Personal Computer) Insert a blank, formatted floppy disk in the drive.
- Step 10** Press the softkey labeled <PROCEED>.

The screen will display count, memory type and address information while the load proceeds.

When finished, the message LOAD COMPLETE is displayed.

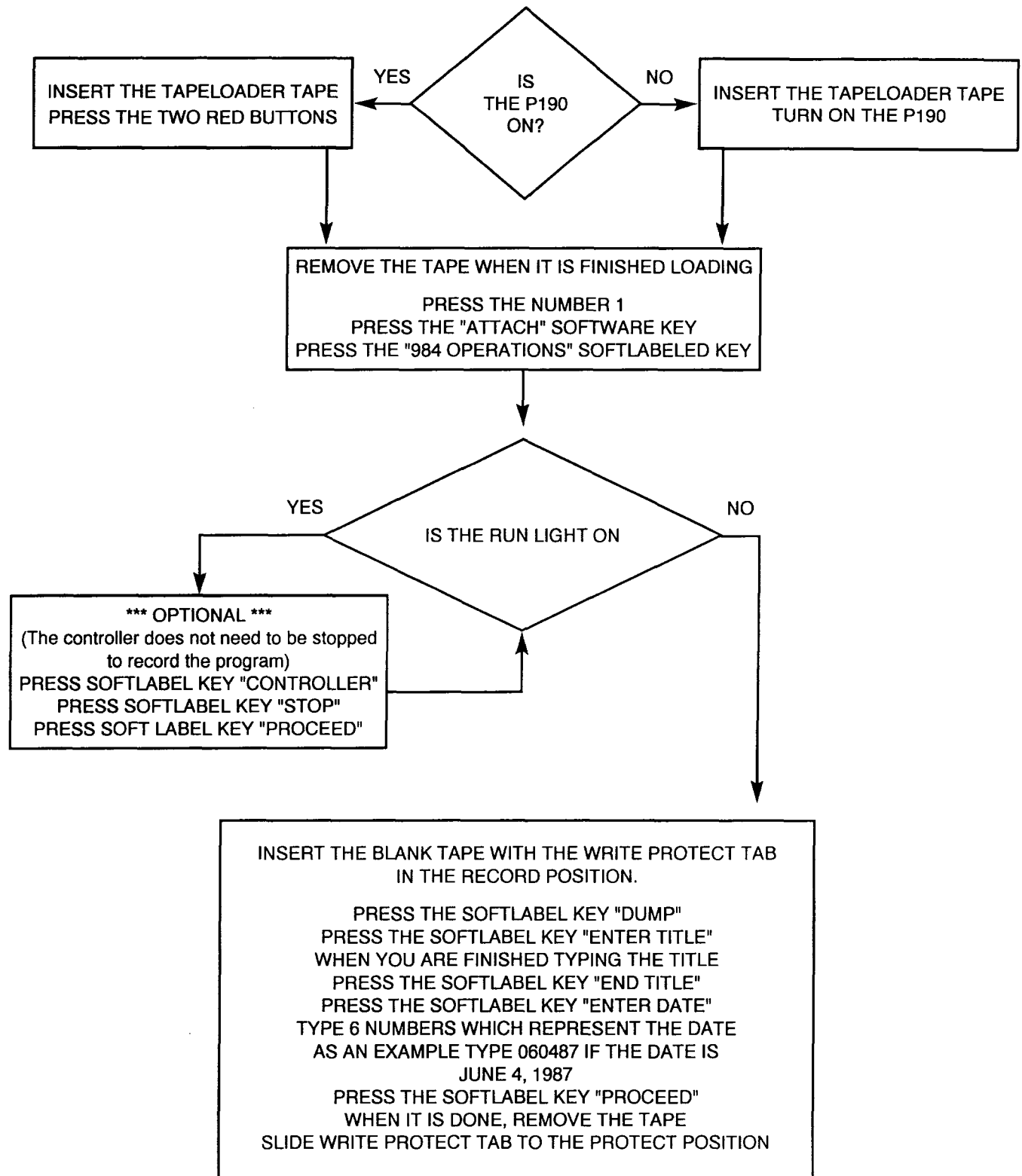
Figure 10-1 Loading a User Program Into a 984 PLC



Record Procedure (Program Dump or Back-up)

- Step 1** (P190) Load a working copy of the Tape Loader tape into the P190 and press the red keys, <INIT> and <INIT LOCK>. (Personal Computer) Select LRV from the Modicon Main Executive menu or select the reset level menu by pressing <ALT-F9>.
- Step 2** After the program loads and the menu is displayed, enter the ID number of the unit to which you want to attach.
- Step 3** Press the softkey labeled <ATTACH UNIT #>.
- Step 4** Press the softkey labeled <984 OPERATIONS>.
- Step 5** Press the softkey labeled <DUMP 984>. (The controller may be running.)
- Step 6** (P190) Remove the tape loader tape and insert a write enabled blank tape. (Personal Computer) Insert a blank, formatted floppy disk in the drive.
- Step 7** If desired, optional steps are:
- 7a. Press the <ENTER TITLE> softkey and key in a maximum of 52 characters of title information.
 - 7b. Press the softkey labeled <END TITLE>.
 - 7c. Press the softkey labeled <ENTER DATE> and enter a six digit date code (e.g., 050790 for May 7,1990).
- Step 8** Press the softkey labeled <PROCEED>.
- Step 9** When finished the DUMP FINISHED prompt is displayed.

Fixture 10-2 Dumping a User Program from a 984



Relocate Procedure

The 984 must have:

A valid configuration table and Traffic cop.

An equal number of logic segments between the relocated logic and the target 984.

- Step 1** (P190) Load a working copy of the Tape Loader tape into the P190 and press the red keys, <INIT> and <INIT LOCK>. (Personal Computer) Select LRV from the Modicon Main Executive menu or select the reset level menu by pressing <ALT-F9>.
- Step 2** After the program loads and the menu is displayed, enter the ID number of the unit to which you want to attach.
- Step 3** Press the softkey labeled <ATTACH UNIT#>.
- Step 4** Press the softkey labeled <984 OPERATIONS>.
- Step 5** Press the softkey labeled <CONTROLLER OPERATIONS>.
- Step 6** Press the softkey labeled <STOP 984>
- Step 7** Press the softkey labeled <PROCEED>.
- Step 8** Press the softkey labeled <RELOCATE LOGIC>.
- Step 9** (P190) Remove the tape loader tape and insert the (previously backed up) tape to be loaded. (Personal Computer) Insert the floppy disk containing the logic to be loaded.
- Step 10** Press the softkey labeled PROCEED.

Verify Procedure

- Step 1** (P190) Load a working copy of the Tape Loader tape into the P190 and press the red keys, <INIT> and <INIT LOCK>. (Personal Computer) Select LRV from the Modicon Main Executive menu or select the reset level menu by pressing <ALT-F9>.
- Step 2** After the program loads and the menu is displayed, enter the ID number of the unit to which you want to attach.
- Step 3** Press the softkey labeled <ATTACH UNIT#>.
- Step 4** Press the softkey labeled <984 OPERATIONS>.
- Step 5** (P190) Press the softkey labeled <VERIFY TAPE WITH 984>. Remove the tape loader tape and insert the back-up to be verified or checked against the 984 memory. (Personal Computer) Press the softkey labeled <VERIFY DISK WITH 984>. Insert the back-up disk to be verified or checked against the 984 memory.
- Step 6** Select whether or not you want to view each miscompare using the <PAUSE/CONTINUE> toggle key.
- Step 7** Press the softkey labeled <PROCEED>.

There are two possibilities for a miscompare:

Any miscompare labeled as WORDS under MEMORY TYPE is the result of normal operation of the controller. This indicates memory differences between the time the tape was made and the time it was verified.

Miscompares labeled as NODES under MEMORY TYPE, indicate logic that is different from tape to memory. It should be investigated further by checking the program.

Verification pauses for review when a miscompare is found. The softkeys:

<CONTINUE> continues the verification.

<PROCEED> restarts the verification.

<ABORT> stops the verification and displays the exit level menu.

Start Procedure

- Step 1** (P190) Load a working copy of the Tape Loader tape into the P190 and press the red keys, <INIT> and <INIT LOCK>. (Personal Computer) Select LRV from the Modicon Main Executive menu or select the reset level menu by pressing <ALT-F9>.
- Step 2** After the program loads and the menu is displayed, enter the ID number of the unit to which you want to attach.
- Step 3** Press the softkey labeled <ATTACH UNIT#>.
- Step 4** Press the softkey labeled <984 OPERATIONS>.
- Step 5** Press the softkey labeled <CONTROLLER OPERATIONS>.
- Step 6** Press the softkey labeled <START 984>.
- Step 7** Press the softkey labeled <PROCEED>.

Stop Procedure

- Step 1** (P190) Load a working copy of the Tape Loader tape into the P190 and press the red keys, <INIT> and <INIT LOCK>. (Personal Computer) Select LRV from the Modicon Main Executive menu or select the reset level menu by pressing <ALT-F9>.
- Step 2** After the program loads and the menu is displayed, enter the ID number of the unit to which you want to attach.
- Step 3** Press the softkey labeled <ATTACH UNIT#>.
- Step 4** Press the softkey labeled <984 OPERATIONS>.
- Step 5** Press the softkey labeled <CONTROLLER OPERATIONS>.

Step 6 Press the softkey labeled <STOP 984>.

Step 7 Press the softkey labeled <PROCEED>.

Evaluate Procedure - P190 Only

➤ **CAUTION** This test destroys any data on the tape that is evaluated.

Step 1 (P190) Load a working copy of the Tape Loader tape into the P190 and press the red keys <INIT> and <INIT LOCK>. (Personal Computer) Select LRV from the Modicon Main Executive menu or select the reset level menu by pressing <ALT-F9>.

Step 2 After the program loads and the menu is displayed, enter the ID number of the unit to which you want to attach.

Step 3 Press the softkey labeled <ATTACH UNIT#>.

Step 4 Press the softkey labeled < PROCEED> or softkey <CANCEL>.

The test makes two staggered read/write 10 minute passes on the evaluation tape.

The test can be stopped at any time by pressing the softkey <STOP>, continued by pressing the softkey <PROCEED>, or ended by pressing the softkey <ABORT>.

LRV Menu Tree

Figure 10-3 P190 Tape Loader Menu Tree

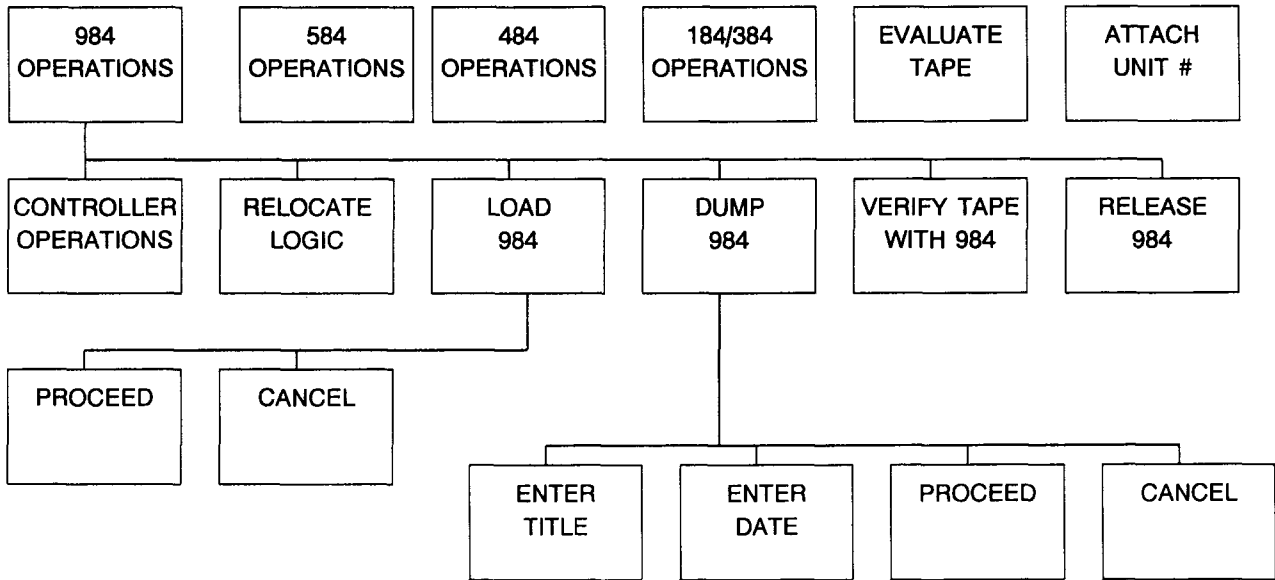


Figure 10-4 Personal Computer LRV Menu Tree

