

# M22B and M50B



## SPECIFICATIONS

### Running time

0-50mm full stroke .....50Hz, 132 s  
 .....60Hz, 112 s

### Thrust

M22B .....2200 N (495 lbf)  
 M50B .....5000 N (1120 lbf)  
 Duty cycle ..... max. 80%/60 minutes

### Optional travel switch S2

Type .....zero potential  
 Capacity ..... 10A, 250V

### Ambient temperature

Operation ..... -20 – +70 °C (-4°F –158°F)  
 Storage ..... -20 – +70 °C (-4°F –158°F)  
 Ambient humidity ..... <95 %RH  
 Enclosure rating ..... IP 65

### Standards

Emission ..... EN 50081-1: 03.1993  
 Immunity ..... EN 50082-1: 11.1997  
 ..... EN 50082-2: 02.1996

### Material

Housing ..... CoPA - Grivory GV-4H  
 Cover ..... PC - Polycarbonat  
 Color ..... black/blow

### Weight

M22B ..... 5,4 kg (11,9 lb.)  
 M50B ..... 6,0 kg (13,2 lb.)

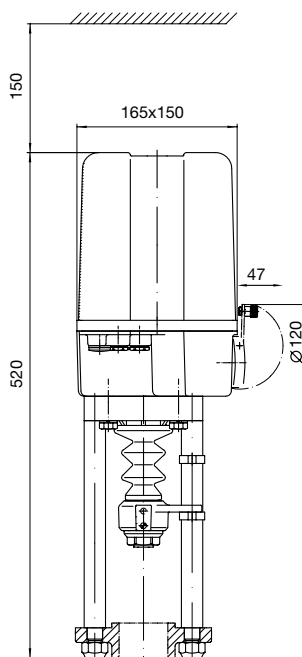
## 3-point 24 V AC or 230 V AC Valve Actuator for size DN 125 – DN 150

M22B and M50B are electromechanical actuators for motorizing 2-way and 3-way valves large sizes DN125 and DN150 type V222, V292 and V321.

M22B and M50B actuators are powered by 24 Vac or 230 Vac and controlled by 3-point action (inc./dec.)

The actuators have optional end switches.

## DIMENSIONS mm



**VALVE RANGE**

Part number	Description	Power supply	Power consumption	
			50 Hz	60Hz
890-0106-000	M22B-24V	24 Vac+10%/ -15%	12 VA	15 VA
890-0108-000	M22B-24V-S2V	24 Vac+10%/ -15%	12 VA	15 VA
890-0110-000	M22B-230V	230 V AC +10% / -15%	11 VA	14 VA
890-0112-000	M22B-230V-S2V	230 V AC +10% / -15%	11 VA	14 VA
890-0206-000	M50B-24V	24 Vac+10%/ -15%	19 VA	29 VA
890-0208-000	M50B-24V-S2	24 Vac+10%/ -15%	19 VA	29 VA
890-0210-000	M50B-24V	230 V AC +10% / -15%	28 VA	35 VA
890-0212-000	M50B-24V-S2	230 V AC +10% / -15%	28 VA	35 VA

**FUNCTION**

**The actuator**

M22B and M50B consists of a reversible motor and a gear train in a CoPA housing.

All bearings of motor and gear train are of permanent lubrication type.

The reversible motor cuts out in both end positions on activating limit switches.

**Additional switches**

The actuators can be optional equipped with an additional stroke-switch board containing two travel switches (double-throw contacts (S4 and S5)). These switches can be adjusted to switch anywhere within the working range.

**Manual operation**

The actuator can be manually operated by means of a hand wheel. Since the hand wheel always follows during motor-driven operation (running indication), never operate by hand while the actuator is running – potential injury hazards.

**Note!** Switch off the electrical source and secure against turning on again.

The position of the actuator is indicated with a pointer between the actuator and the valve.

**Installation**

The installation of the M22B and M50B is carried out according to instruction, shipped together with the actuator.

The actuator may be mounted beside or above the valve. Mounting below the valve should be avoided.

**WIRING**

