



TAC XBuilder

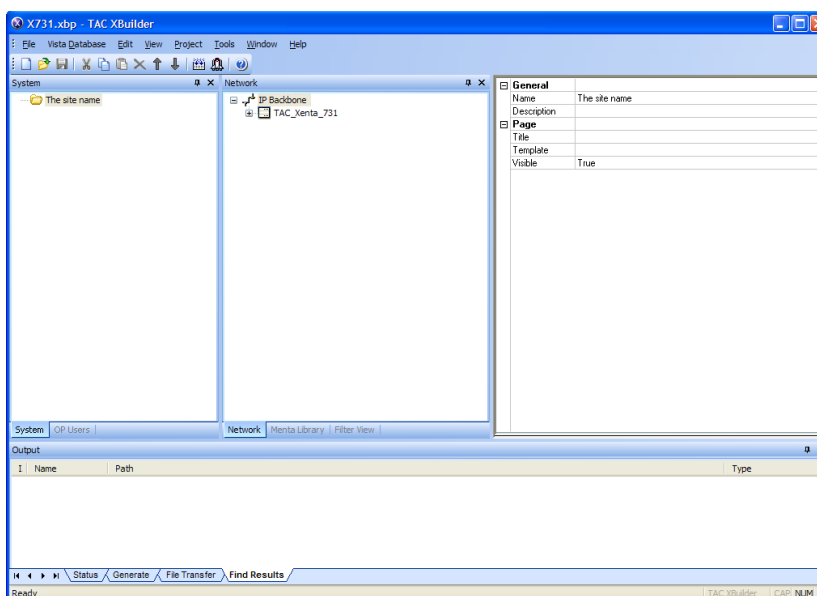
Configuration Tool for TAC Xenta Servers

The TAC XBuilder configuration tool is used to program and configure Xenta Servers. These include the Xenta 500 series, Xenta 700 series, and Xenta 913. You use XBuilder to create the functions for the different targets including communications, web content which includes TGML graphics, system functions which include alarms, trend logs and schedules, Menta control applications and gateway functionality.

The various features of XBuilder that are available to the user depend upon which Xenta Server is selected.

When you use XBuilder, you create an XBuilder project for a specific Xenta Server; you can then download the project to the Xenta Server you are working on.

XBuilder can be operated as a stand-alone or integrated part of TAC Vista Workstation/Server. In the latter case, all objects created in XBuilder are automatically accessible in Vista Workstation.



The user interface is intuitive and can be customized. It has four main panes.

- **The System pane** XBuilder projects are created in the system pane, this includes the various types of object. The content of the web, the objects to be displayed on the web and, for Xenta 700, the OP7 content are all created in the system pane.

- **The Network/Menta Library/Filter View pane** The pane has three tabs:

Network This is the physical network where the I/O modules, I/NET and Modbus network are defined. This is either achieved manually or with the help of Vista.

Menta Library When the Xenta 700 is used to control similar pieces of equipment, you can create a Menta Library application with multiple instances; that is to say one common Menta source code for several control applications.

Filter View This is a tree structure that allows the user to view of the complete system. The Filter View is used with the System pane to monitor internal bindings, such as connecting I/O points to Menta applications or putting specific signal values on a Values Page.

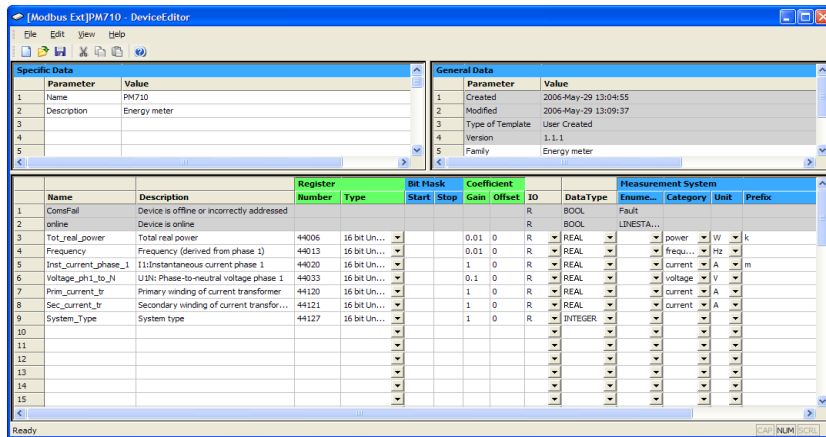
- **The Property pane** When an object is selected in either the System or the Network pane, the properties of this object are displayed in the Property pane. The properties of an object can be modified in the Property pane.
- **The Output pane** The result of such actions as Search, Generate and Download are displayed here.

Internal bindings or connections are made intuitively using drag-and-drop.

DEVICE EDITOR

When you need to create a Gateway in Xenta 913 or another Xenta Server and one of the protocols is not a TAC BMS protocol, for example Modbus, the Device Editor can be used to

easily create an image of the Modbus device. The images can be re-used for each and every connected device of the same type.



TECHNICAL DATA

Operating System

See requirements in TAC Vista Workstation data sheet, 03-00022-06 or later.

Supported Targets

| | |
|--------------------------|-----------|
| TAC Xenta 511 | 007308110 |
| TAC Xenta 511-B (Modbus) | 007308120 |
| TAC Xenta 527 | 007308200 |
| TAC Xenta 555 | 007308250 |
| TAC Xenta 701 | 007301500 |
| TAC Xenta 711 | 007301550 |
| TAC Xenta 721 | 007301600 |
| TAC Xenta 731 | 007301650 |
| TAC Xenta 913 | 007308351 |

Part Numbers

| | |
|----------------------------------|-----------|
| XBuilder 5 | 000882411 |
| XBuilder 5 – Upgrade | 000883411 |
| XBuilder 5 – 1 year subscription | 000884410 |

Copyright © 2008-2011, Schneider Electric
 All brand names, trademarks and registered trademarks are the property of their respective owners. Information contained within this document is subject to change without notice. All rights reserved.



03-00040-06-en Jan 2011



For more information visit

www.schneider-electric.com/buildings

