

# PACTware® and DTM installation

To install PACTware® properly, please follow the steps below.

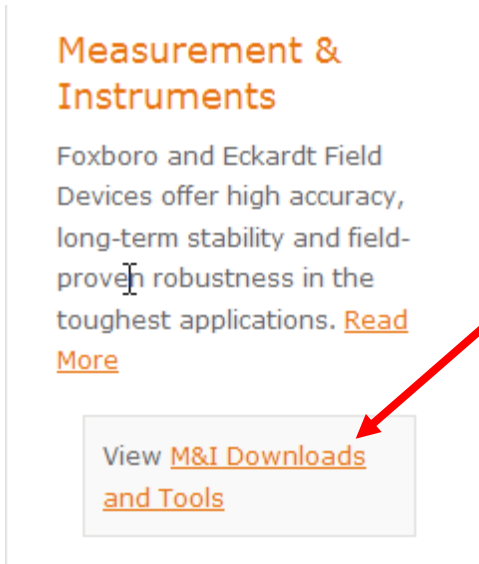
**CAUTION:** If you've downloaded PACTware® in ".ZIP" format, it **MUST BE EXTRACTED** in order to install properly...SEE PROPER STEPS BELOW.

**NOTE:** Both the latest Microsoft .NET Framework **as well as** the Microsoft .NET Framework Service Pack must be installed prior to the installation of latest version of PACTware® otherwise the PACTware® installation will abort.

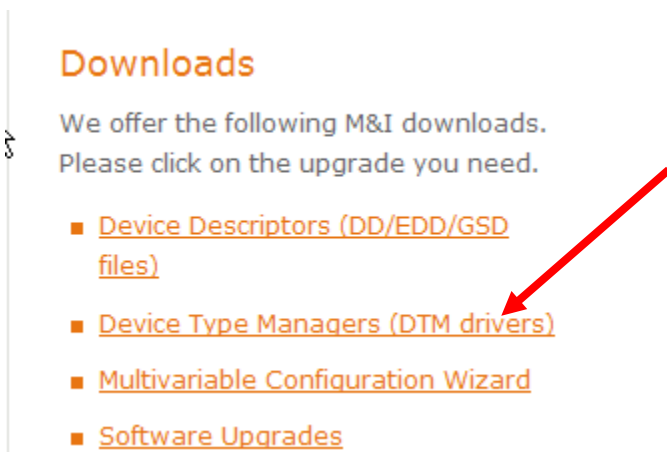
**NOTE:** Below procedure and pictures may vary depending on the revision level of PACTware® and your Windows® Operating System

To download from the Foxboro website go to: [www.foxboro.com](http://www.foxboro.com)

Click on 'M&I Downloads and Tools':



Click on 'Device Type Manager (DTM drivers)':

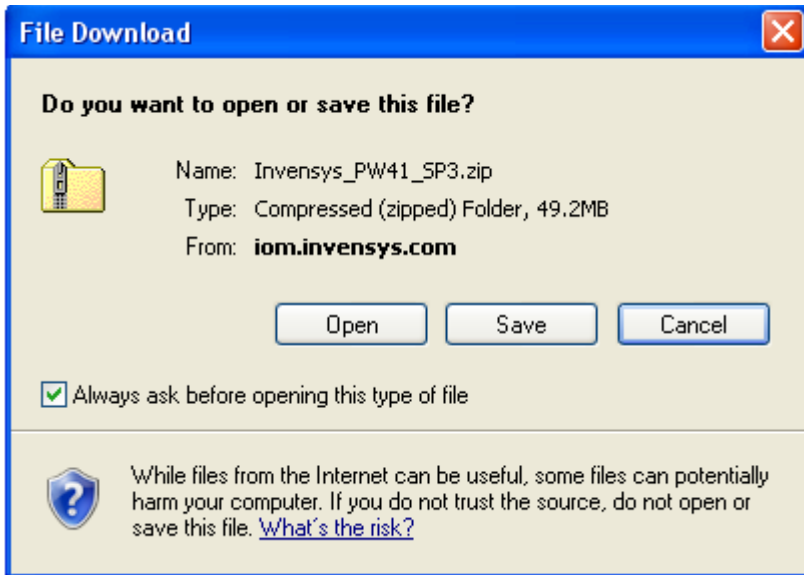


Click on latest zipped file version of PACTware®: 'Invensys\_PW41\_SP3.zip':

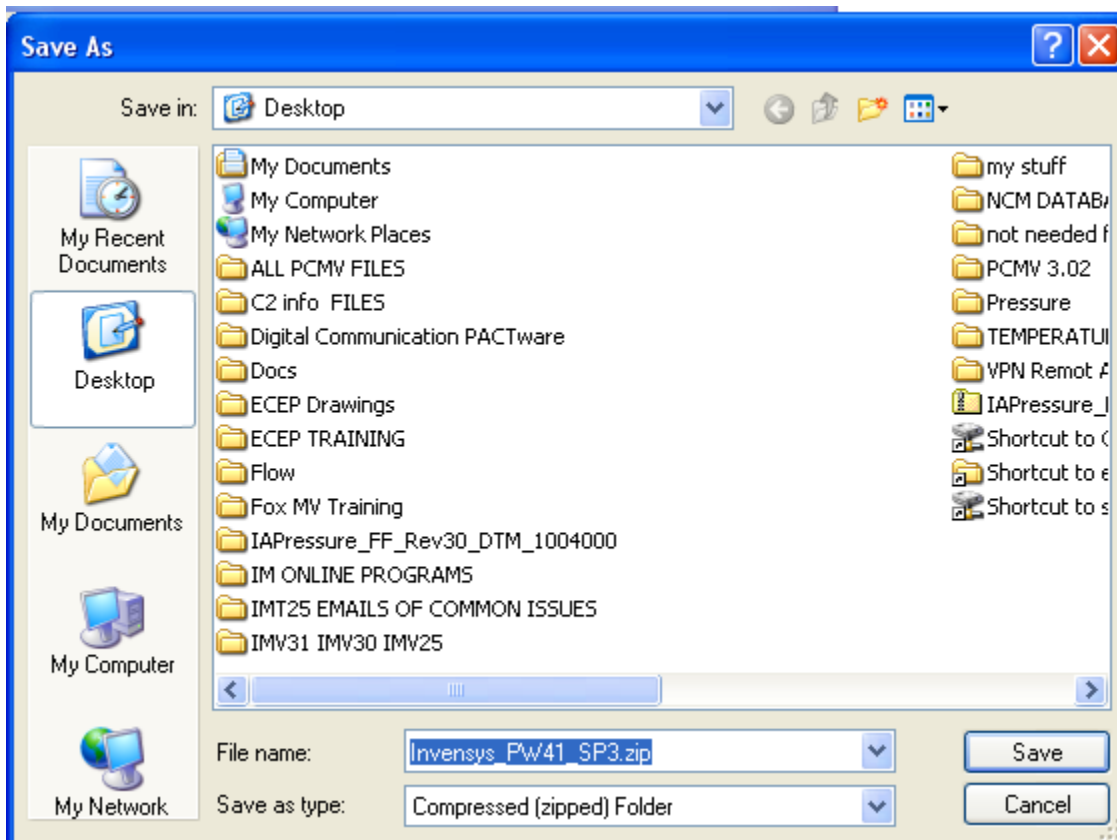


**NOTE:** Be aware that the PACTware® version listed within these instructions may change, if that happens then the file name will also change.

Click 'Save' in the File Download window:

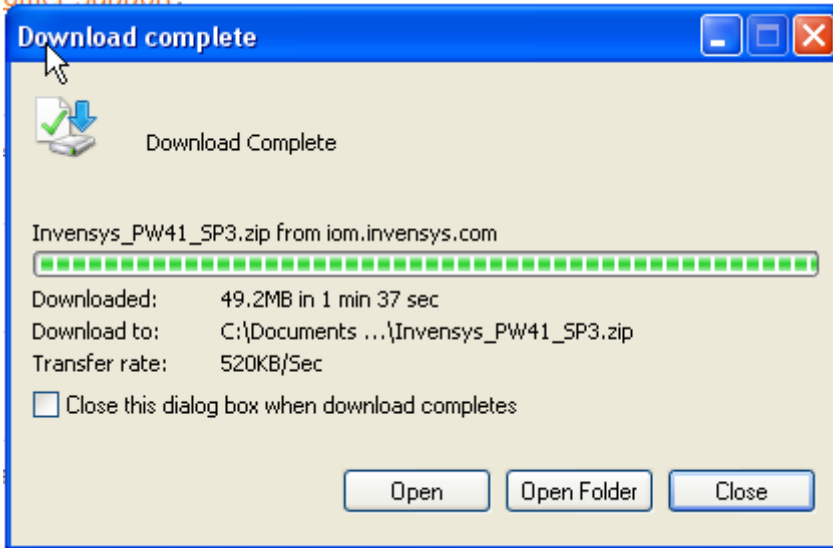


Click 'Save' to save file to the desktop. NOTE: Verify Desktop is selected and file name is correct:



**NOTE:** File name 'Invensys\_PW41\_SP3.zip' should now be on the desktop.

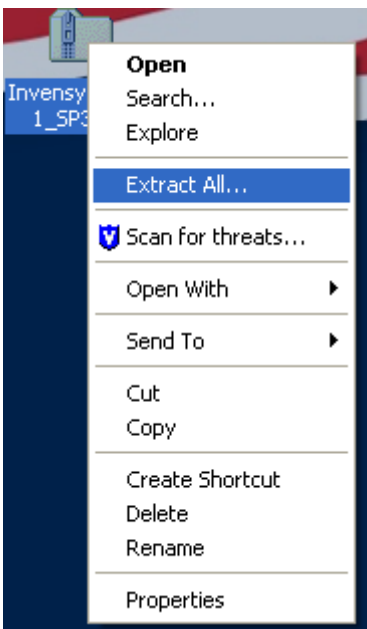
Click 'Close' to close out the Download Complete dialog box.



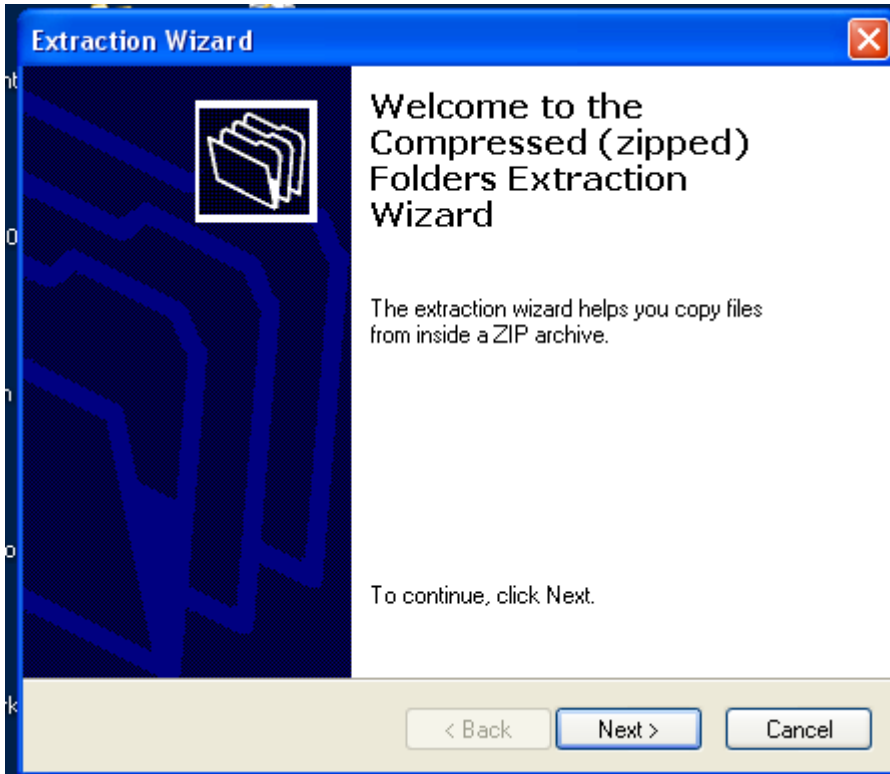
All windows can now be closed.

**CAUTION:** DO NOT attempt to open (double click) the Invensys\_PE41\_SP3.zip file, it **MUST BE EXTRACTED** in order to install properly.

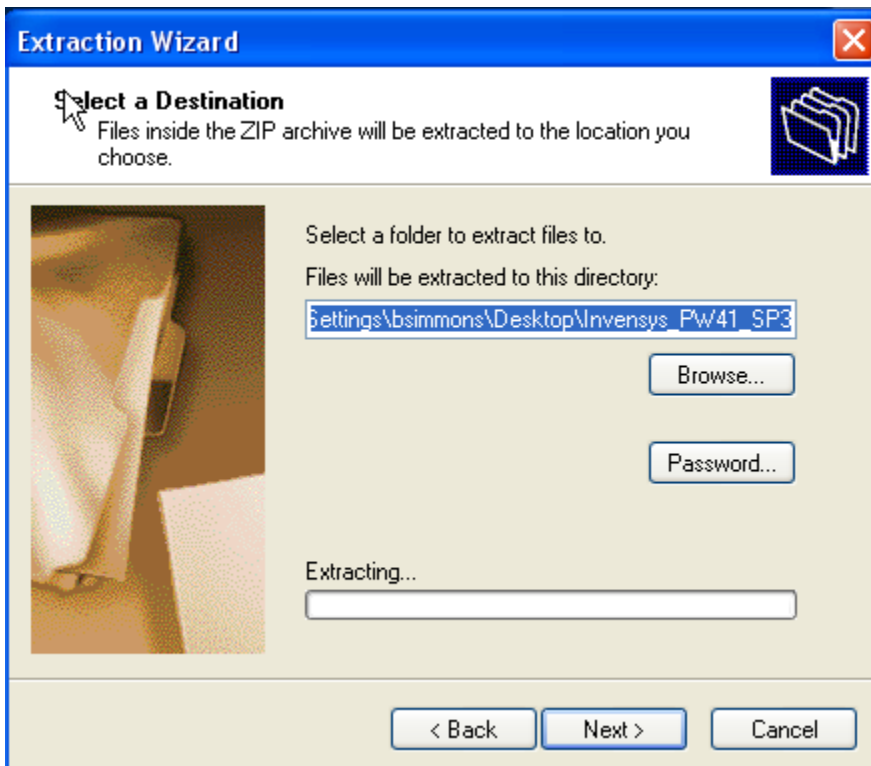
Right click the zipped file name and click on 'Extract All'.



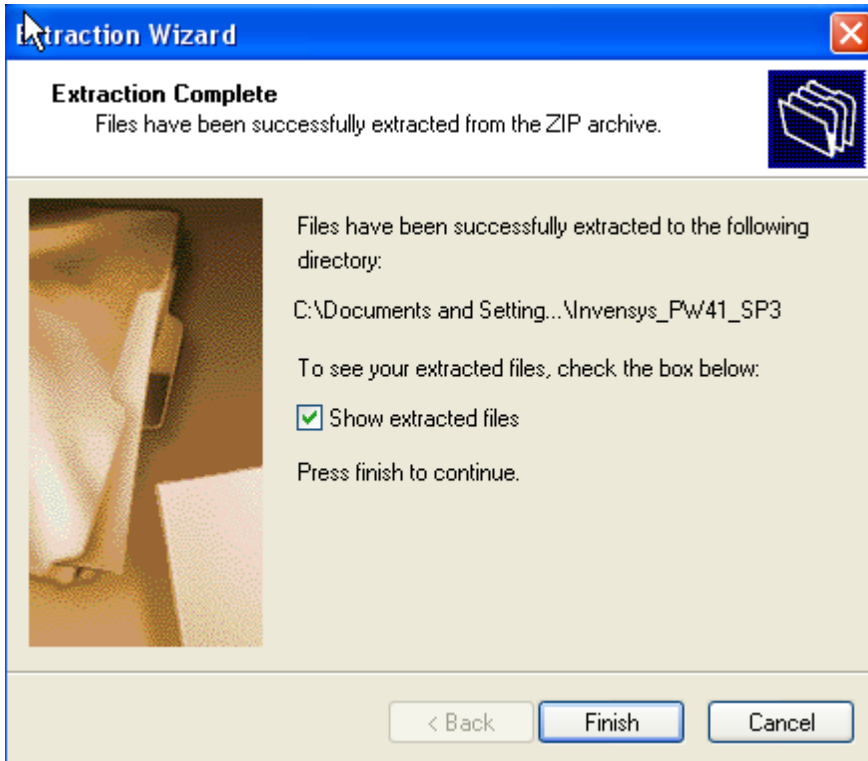
Extraction Wizard box will appear. Click 'Next'.



Click 'Next' to extract files to new folder (Invensys\_PW41\_SP3) on the desktop.

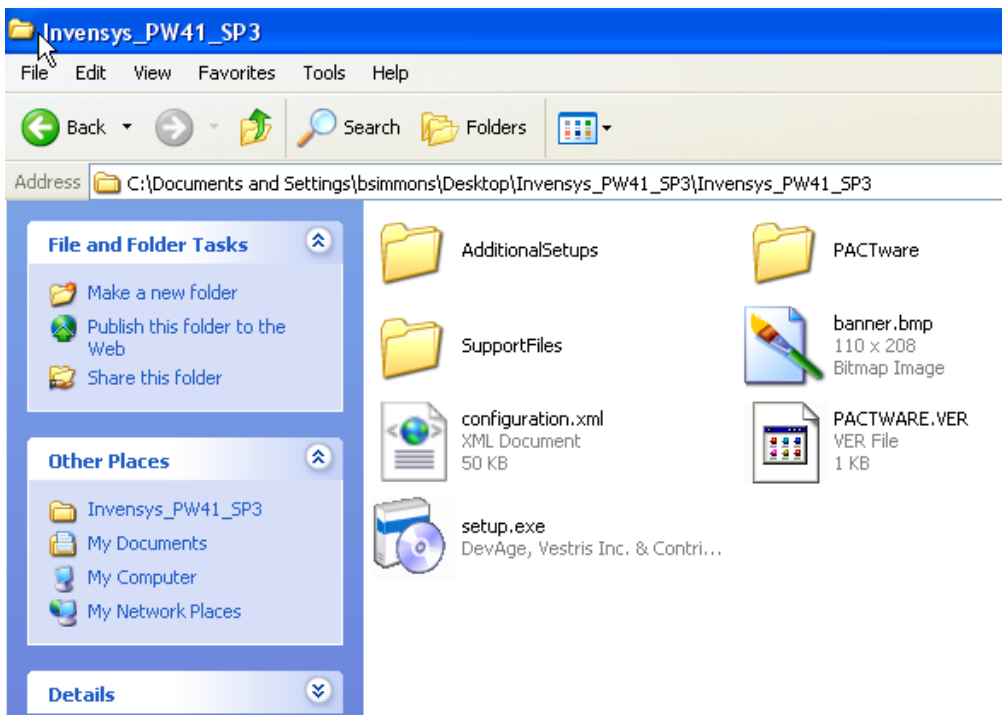


Click 'Finished'

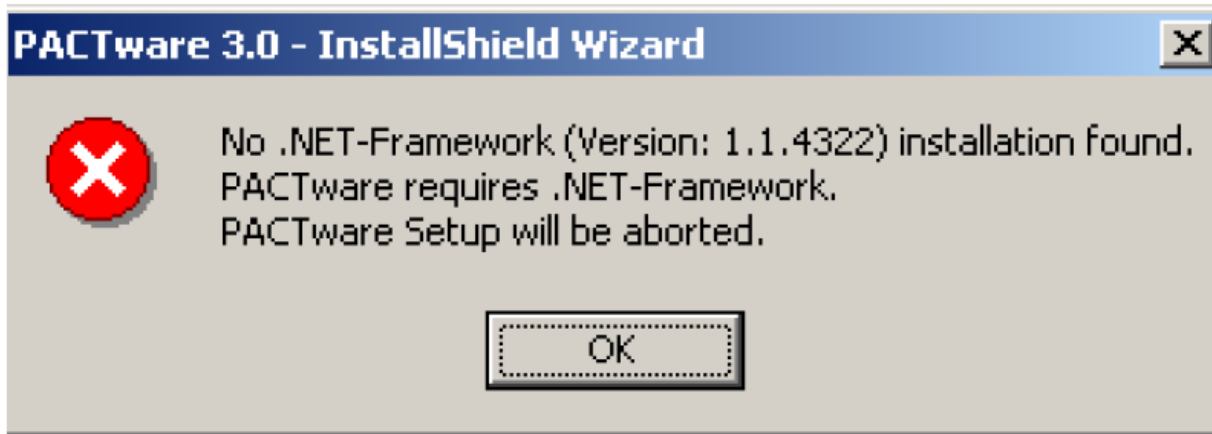


Close out any open windows.

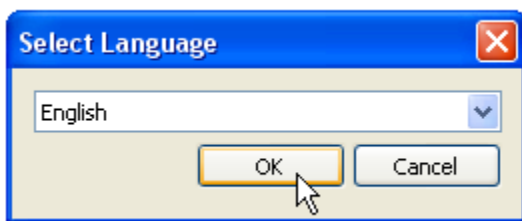
Open up (double click) the newly added folder: 'Invensys\_PW41\_SP3'. Please note that you might need to open another folder named 'Invensys\_PW41\_SP3' until you see 'setup.exe' file. Double click 'setup.exe'.



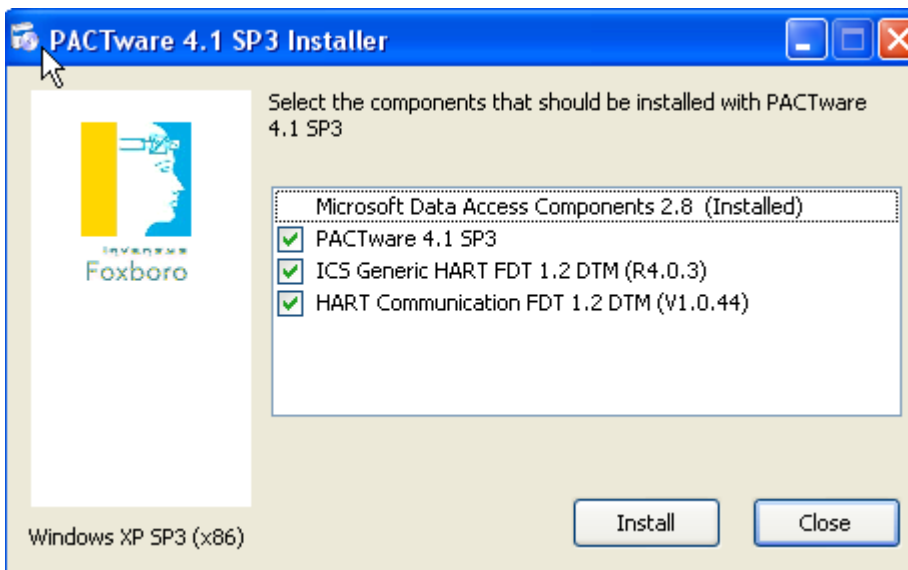
**NOTE:** Error message box will appear if the incorrect version of Microsoft .NET-Framework is installed...or not at all. Installation will abort. Correct version of .NET Framework will need to be installed to continue.



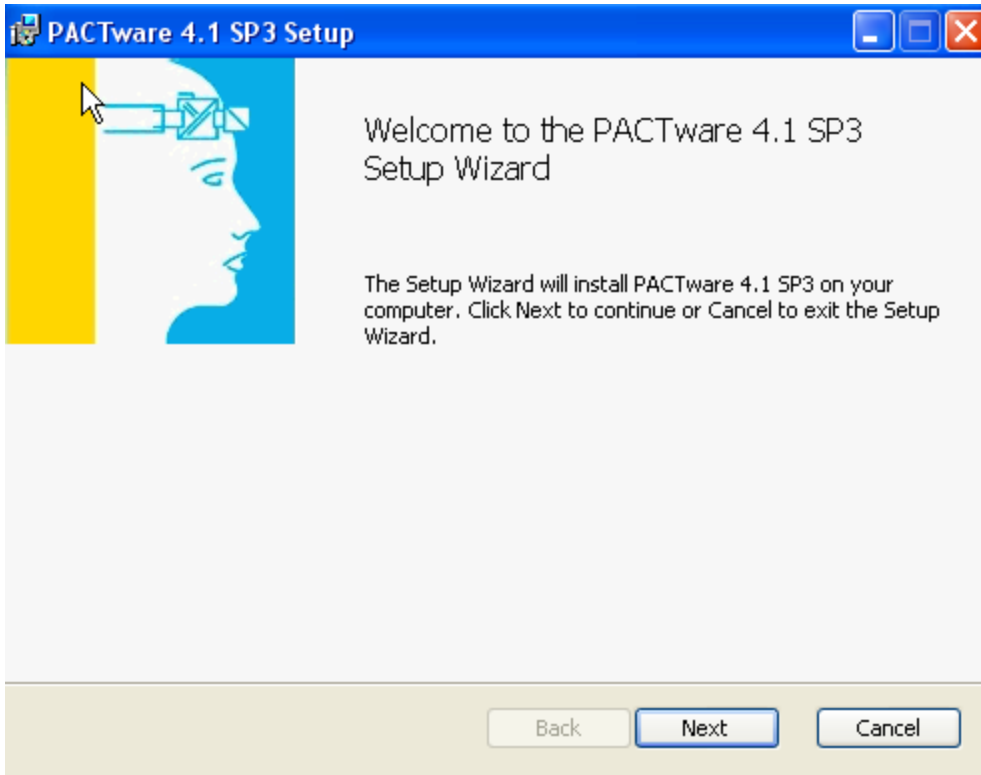
Select desired language and Click 'OK'



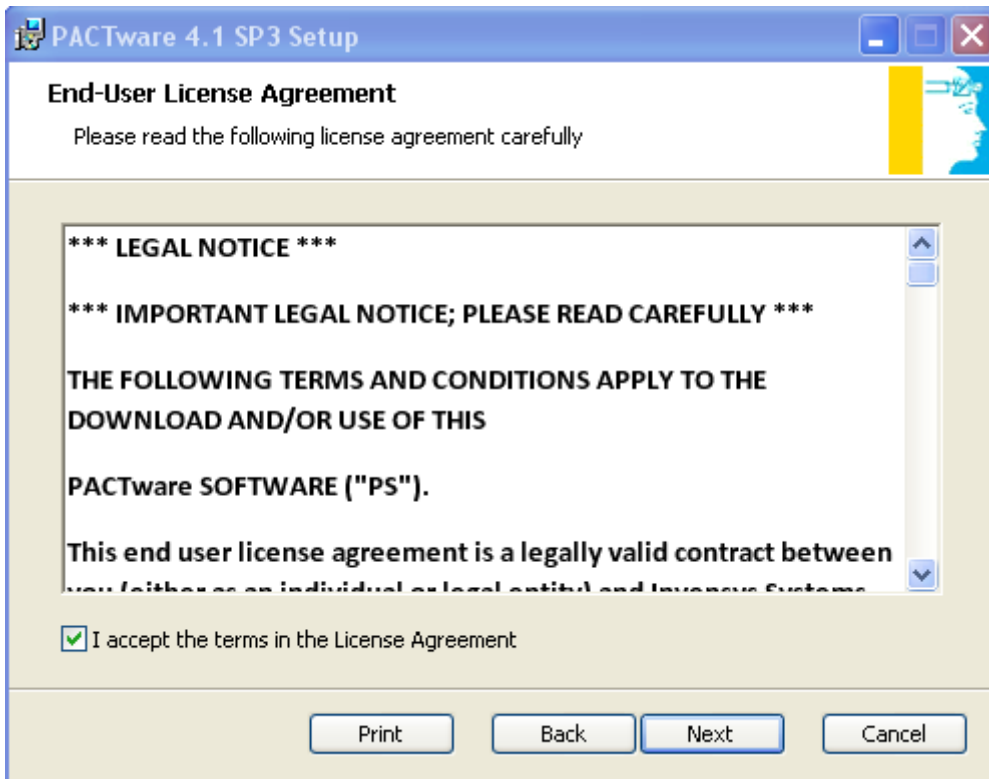
Verify that the 3 selections (shown below) are checked. Click 'Install'



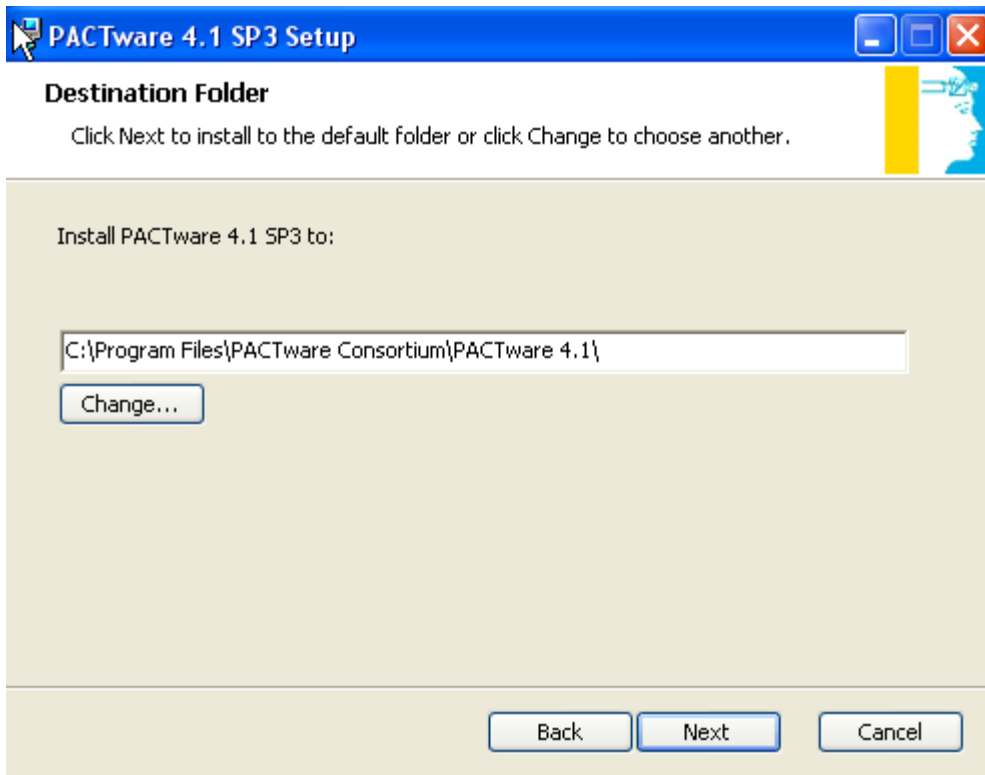
Click 'Next'



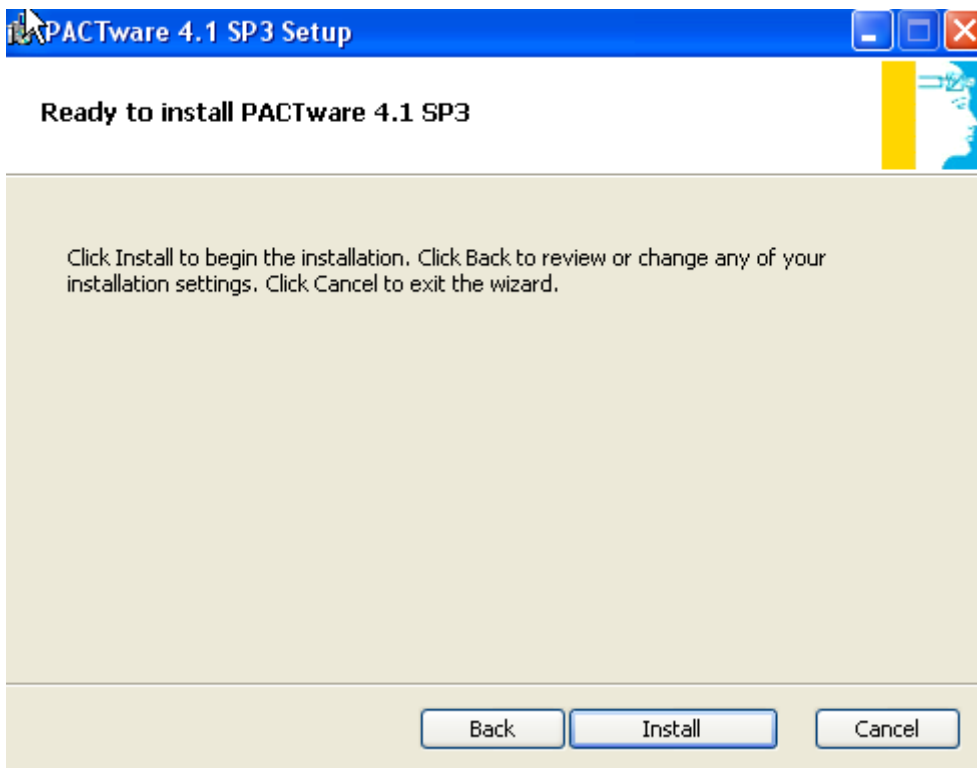
Check box to Accept terms in the License Agreement. Click 'Next'



Use default installation directory (Recommended). Click 'Next'.

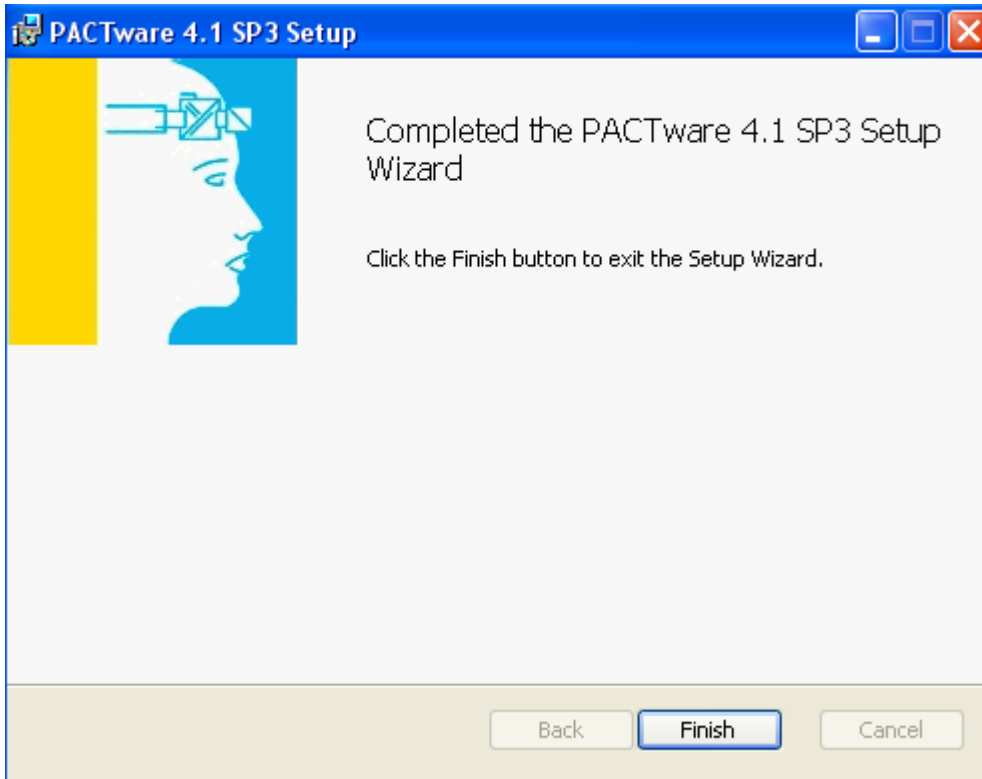


Click 'Install'

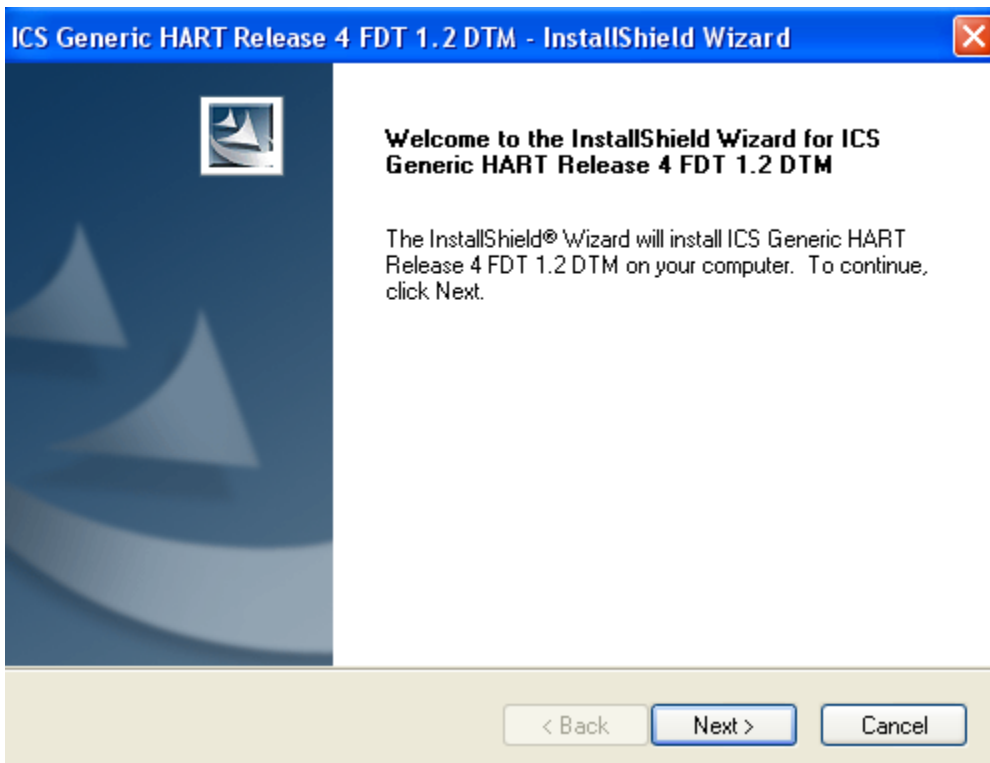




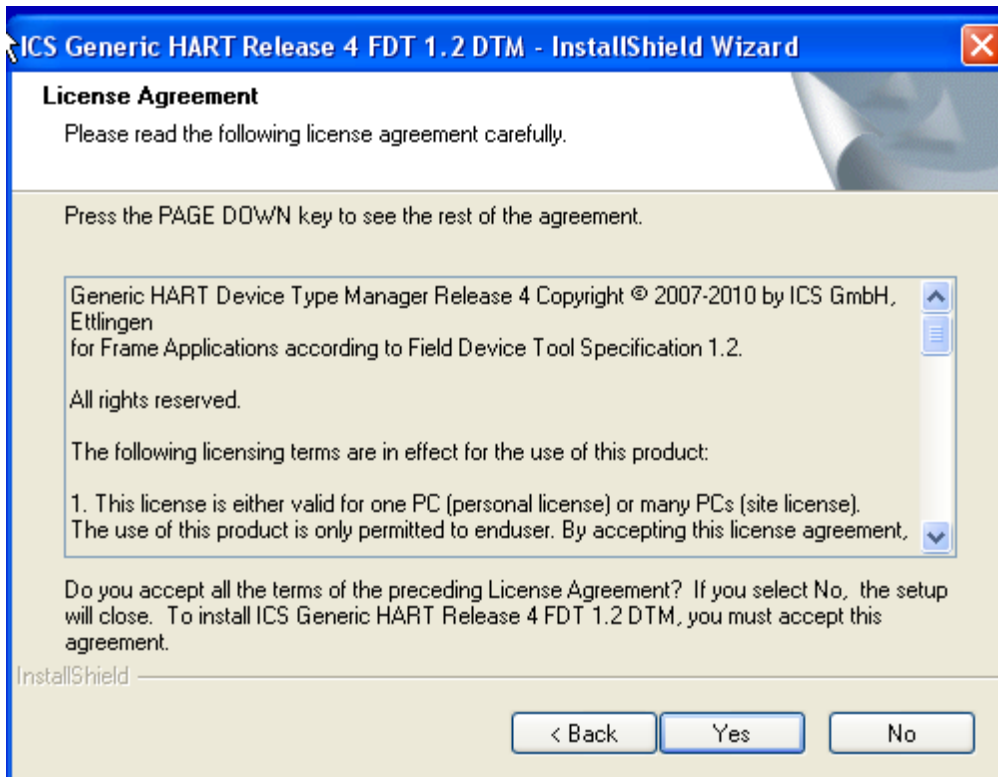
Click 'Finish'



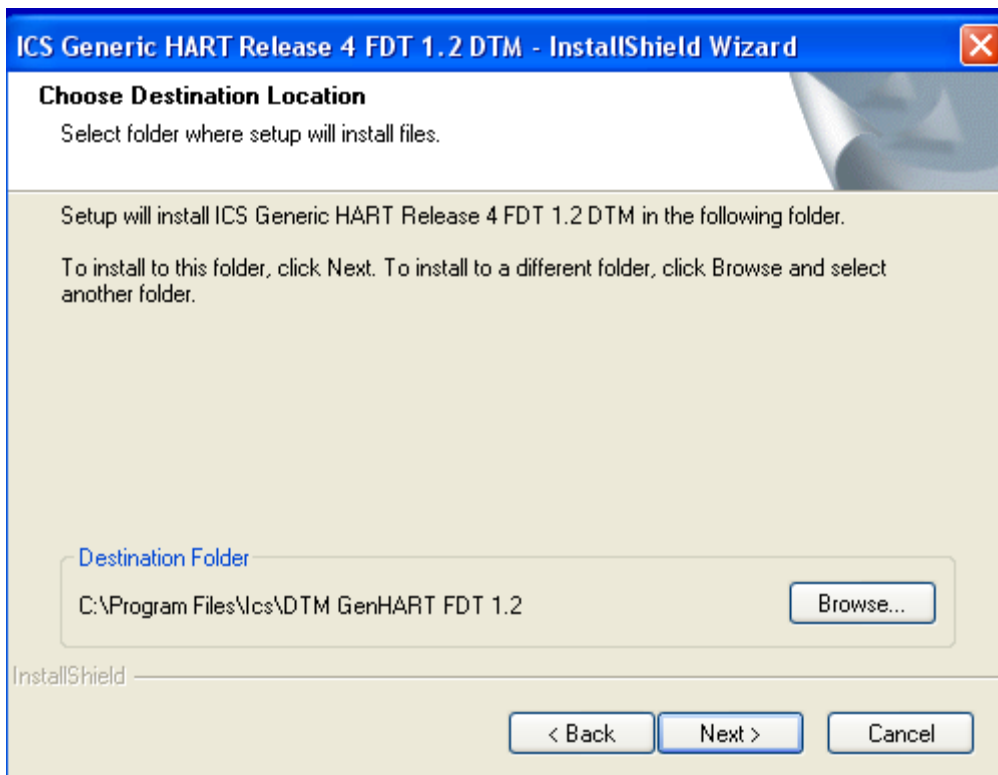
Once PACTware® installation is finished... 'ICS Generic HART DTM' will be installed next. Click 'Next'



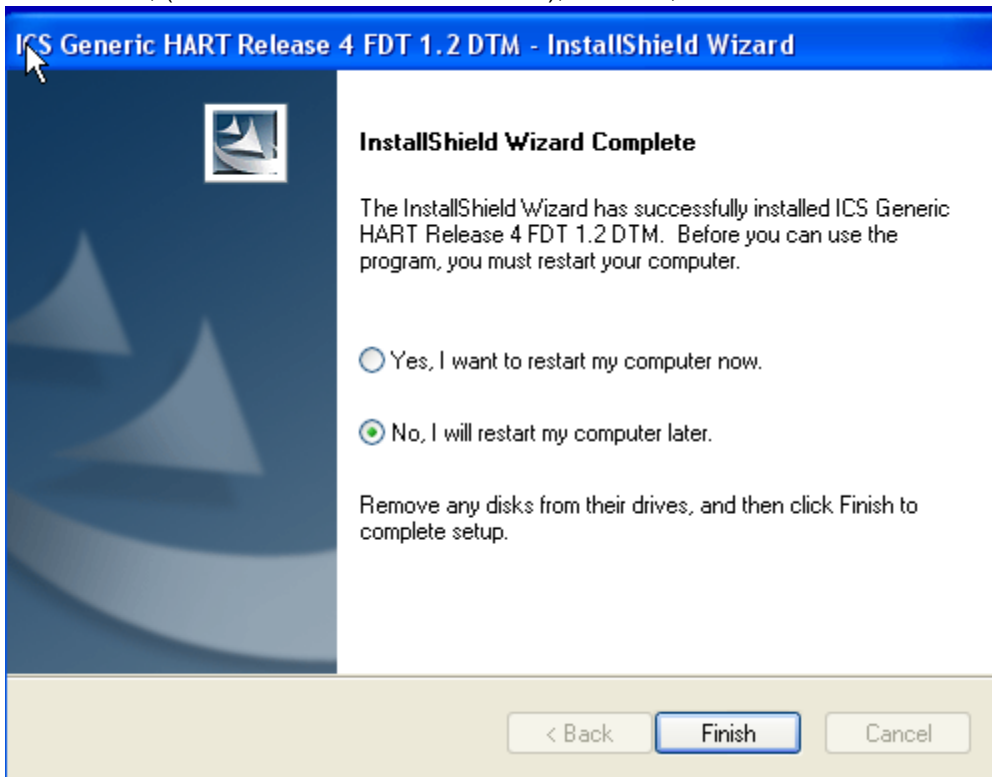
Click 'Yes' to accept the License Agreement.



Click 'Next' to accept the default installation directory (Recommended).



**CAUTION:** You **MUST** select **"No, I will restart my computer later"** in order for the third, (and final), component of PACTware®, (the HART Communication DTM), to install; then click 'Finish'.



Once ICS Generic HART DTM installation is finished ...HART Communication FDT will be installed next.

Click 'Next'



Click on the 'I accept the terms in the License Agreement' radio button. Click 'Next'

**HART Communication FDT 1.2 DTM (V1.0.44) Setup Wizard**

**End-User Licence Agreement** *codeWRIGHTS*

Please read the following licence agreement carefully:

LEGAL NOTICE  
IMPORTANT LEGAL NOTICE; PLEASE READ CAREFULLY

THE FOLLOWING INFORMATION AND CONDITIONS APPLY TO  
DOWNLOADING AND/OR USING THIS SOFTWARE

The company **CodeWrights GmbH** is the Supplier of this  
software

I accept the terms in the Licence Agreement  
 I do not accept the terms in the Licence Agreement

Print < Back Next > Cancel

Enter "Your User Name" and "Your Company Name". Click 'Next'.

**HART Communication FDT 1.2 DTM (V1.0.44) Setup Wizard**

**Customer Information** *codeWRIGHTS*

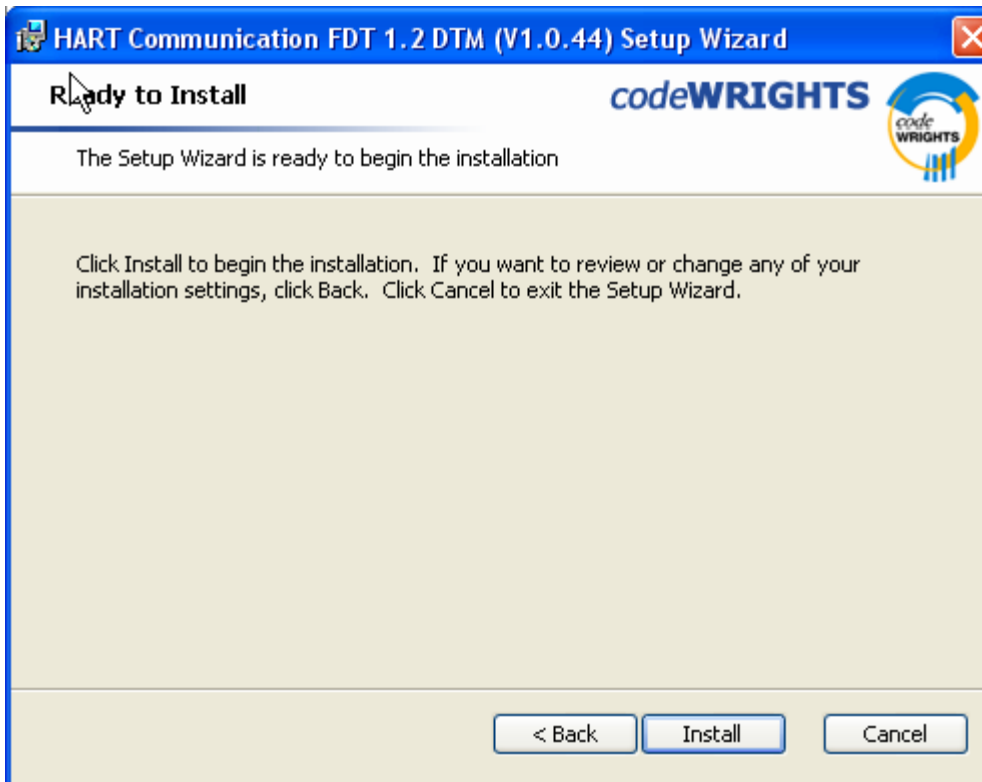
Please enter your customer information

User Name:  
Your User Name

Organization:  
your Company Name

< Back Next > Cancel

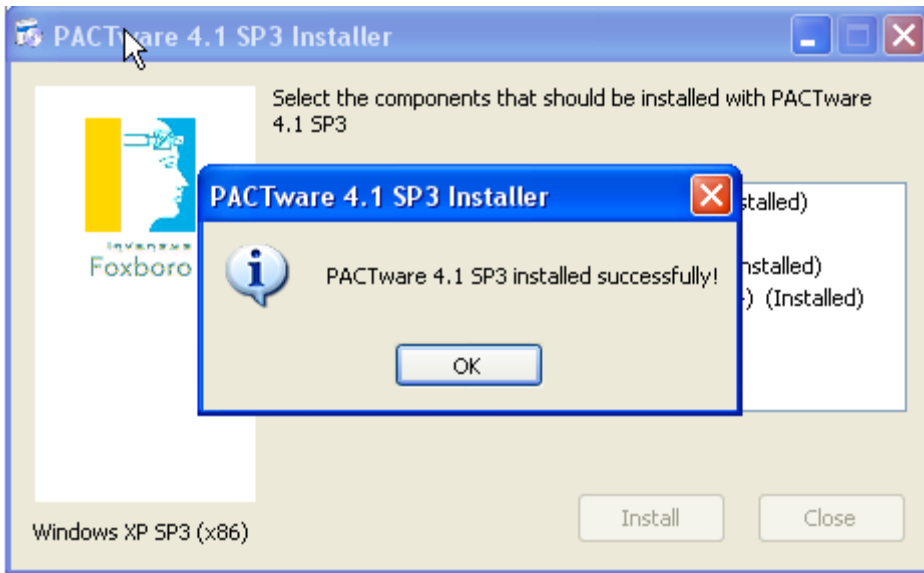
Click 'Install'



Click 'Finish'



PACTware® has installed successfully...Click 'OK'

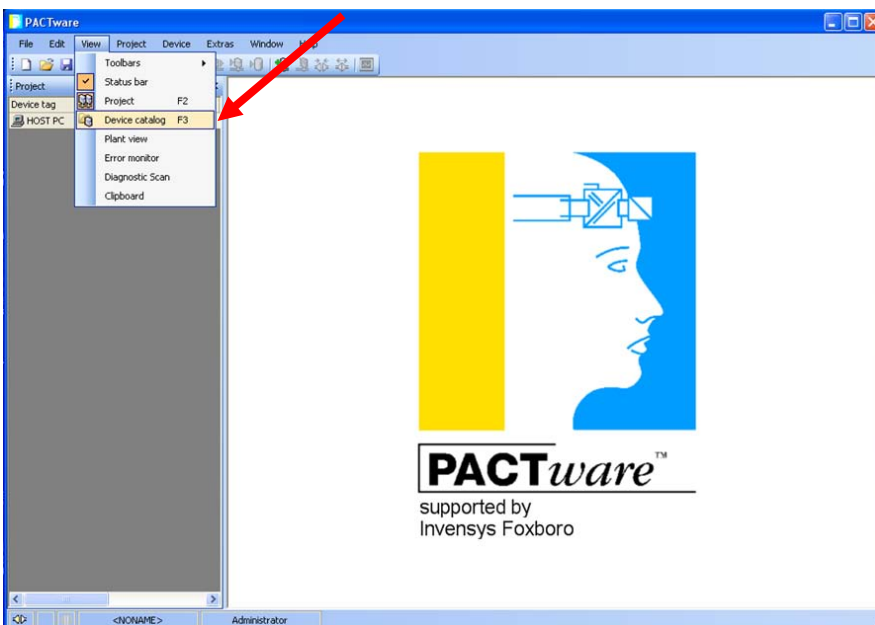


This completes your PACTware® installation; **you should now restart your computer.** Once your computer has restarted, you can then install your required instrumentation DTMs.

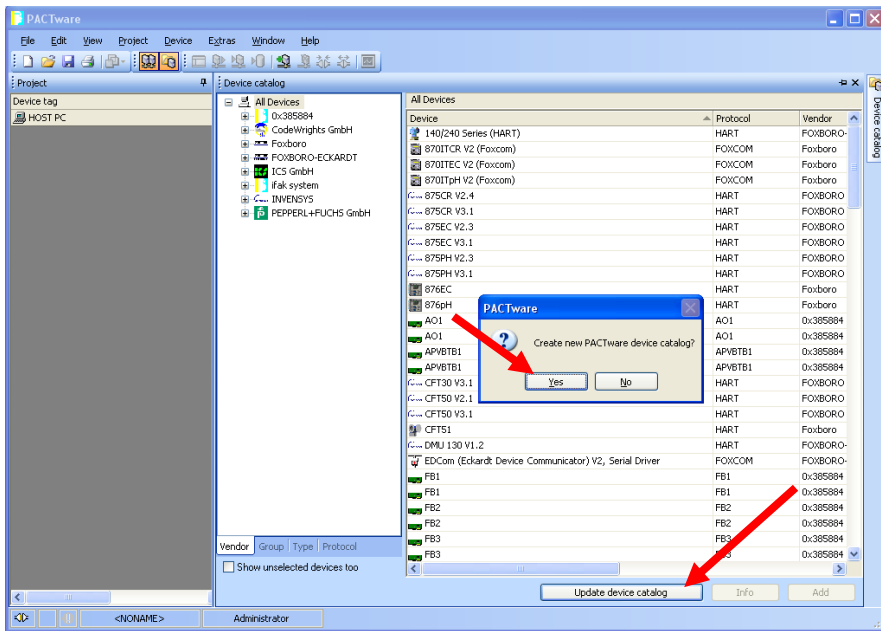
DTM Installation:

**NOTE:** Newly installed DTMs are "detected" automatically the **first time** you run PACTware® after its initial installation. Anytime after that, (whenever new DTMs are installed), you **MUST** "Update" PACTware's® "Device Catalog" in order for PACTware® to detect any subsequent DTM installations.

To view the PACTware "Device Catalog" click on "View" and then click on "Device Catalog"



With the “Device Catalog” open, Click on “Update Device Catalog” and then click “Yes” on the screen that asks “Create new PACTware device catalog?”



Your newly installed DTMs should now be listed within the Device Catalog and available for use.

This concludes these instructions.