

Product End-of-Life Instructions

Product Range: **Varset - LV power factor correction banks**

Marketing Model/Name: (List of multiple models if applicable)

The End of Life Instruction (EOLI) covers the entire range:

- **590 products from 7,5 Kvar to 1200 Kvar, Voltage 230 and 400 and frequency 135, 190, 215 Hz**

Purpose:

The product family must be disposed according to the legislation of the country. This document is intended for use by end of life recyclers or treatment facilities. It provides the basic information to assure an appropriate end of life treatment for the components and materials of the product.

Note :

This product family is in the scope of EU directive 2002/96/EC, Waste Electrical and Electronic Equipment (WEEE).



Size in mm

H x L x D in mm: **from 450 x 500 x 275 to 2000 x 4300 x 600**

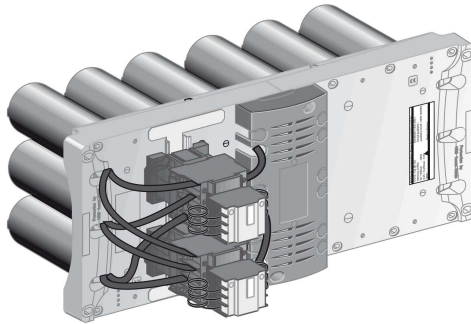
Weight in kg : **from 20 to 1580**

Operations recommended for the end of life treatment

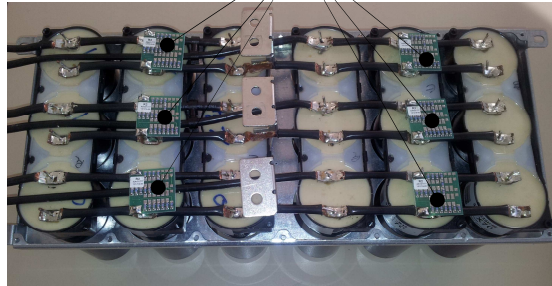
There are several steps to process the products at the end of life so as to recover components, materials or energy :
Reuse → Separation for special treatment → Other dismantling → Shredding.

The components of the products that optimize the recycling performances are listed, identified and located hereunder.

Varpact



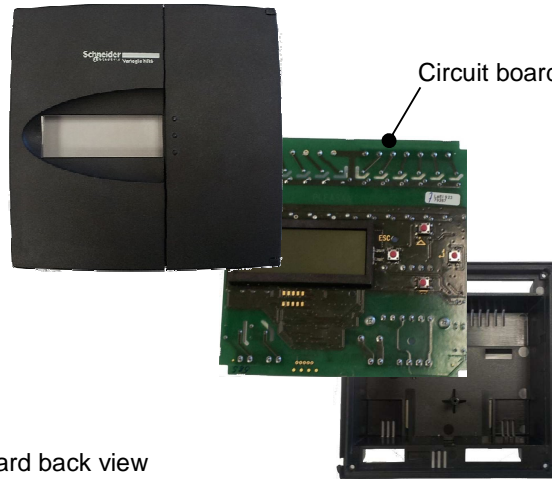
6 Discharge resistors



Varlogic



Circuit board



Circuit board back view



This product contains circuit boards which is recommended to be treated separately during the End of Life operations.

After switch off Varpact module, capacitors are discharge below 50V after 1 minute.

Recommendation	Number on drawing	Components	Weight (g)	Comment
Dismantling				
	6	Discharge resistors	5,6 each	Demount contactors and front covers to access discharge resistors
	1	Circuit board	468 (with equipment)	Remove screws and front cover to access circuit board

Schneider Electric SA
43-45, boulevard Franklin Roosevelt
F-92500 Rueil-Malmaison Cedex (France)
Tel.: +33 (0) 1 41 29 70 00
www.schneider-electric.com

The version of the Guide used to create the document: End of Life
Instruction Drafting Guide of Schneider Electric version V X

ENVEOLI 111016EN

Publication date : xx/xx/xxxx