

Instruction Bulletin

Replaces 30072-004-101 dated 03/1999

Replacement Contact and Solenoid Kits For Class 8903 Type PB Lighting Contactors 9998PB•••

Retain for future use.

DISASSEMBLY

CAUTION

IMPROPER ASSEMBLY

- Do not cross-thread the soft copper contacts when installing screws.
- Be careful to follow all instructions completely.

Failure to follow these instructions can result in equipment damage and improper operation.

⚠ DANGER

HAZARDOUS VOLTAGE

Turn off all power supplying the equipment before working on it.

Failure to follow this instruction will result in death or serious injury.

Letters in parentheses refer to parts in the figures.

1. Verify that you have the correct kit for your application. See Table 1.

Table 1: Kit Catalog Numbers

Contact Kits			Solenoid Kits	
Amperage	No. of Poles	Catalog Number	AC Control Voltage	Catalog Number
30–100	2	9998PB2	120/208	9998PBV38
	3	9998PB3	240/277	9998PBV39
150–225	2	9998PB14	480	9998PBV28
	3	9998PB15		

2. Gather the tools needed:



- Torque wrench¹, 10–25 lb-in (1.1–2.8 N•m)
- 5/16 in. nut driver¹
- 1/8 in. Allen wrench²
- 3/32 in. Allen wrench
- Phillips screw driver, No. 2

1. contact kit only
2. solenoid kit only

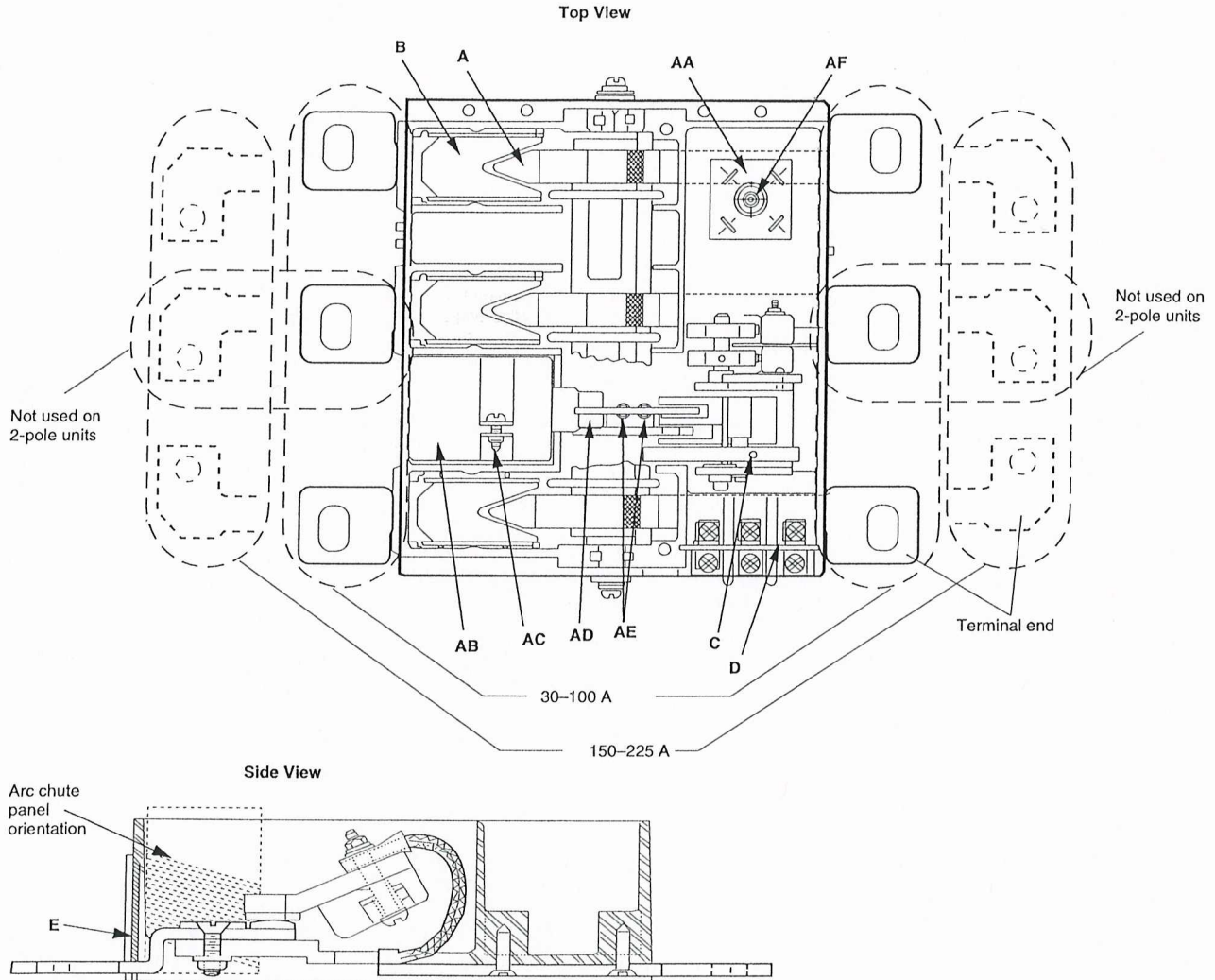
3. For the contact kit, remove the unit from its mounting so that you can access both sides of the unit.
4. Open the contacts by inserting the 3/32 in. Allen wrench into the hole in the manual operating roller (C), then rotating the roller toward the open position. See the label.

(When closing the contacts, rotate the roller toward the closed position.)

NOTE: Do not put your fingers into the unit while opening or closing the contacts.

5. Remove and retain the two cover retaining screws and remove the cover.
6. Note the orientation of the arc chutes (B). It is important to reinstall them in the exact same orientation. Slide out all the arc chutes and the barrier (D) over the control wiring terminals to prevent them from falling out and getting damaged.
7. Proceed to the replacement instructions for the appropriate kit.

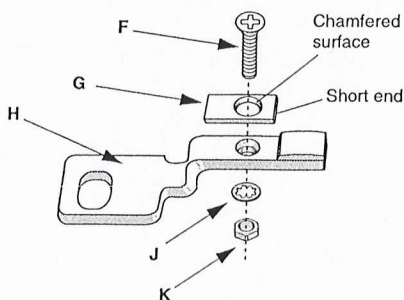
Figure 1: Contactor Layout and Orientation



CONTACT KITS

STATIONARY CONTACT REPLACEMENT

Figure 2: Stationary Contact Assembly



Discard the old parts, unless otherwise instructed.

1. From the back side of the unit, remove the mounting nut (K) and lock washer (J). From the top side of the unit, remove the screw (F) and arc runner (G) from the stationary contact (H).
2. Slide the stationary contact out from under the vent screen (E). Retain the vent screen.
3. Using the new parts from the kit, reassemble in the reverse order of removal. Ensure that all parts are flush and the arc runner is parallel to the stationary contact.
4. Torque the nut to 20 lb-in (2.2 N•m), holding the screw in position with a screw driver.
5. Ensure that the arc runner is parallel to the stationary contact.
6. Repeat Steps 1–5 for each pole.