

Product End-of-Life Instructions

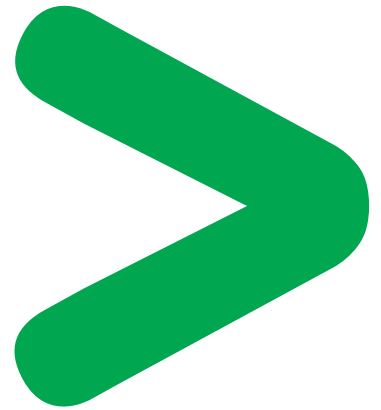
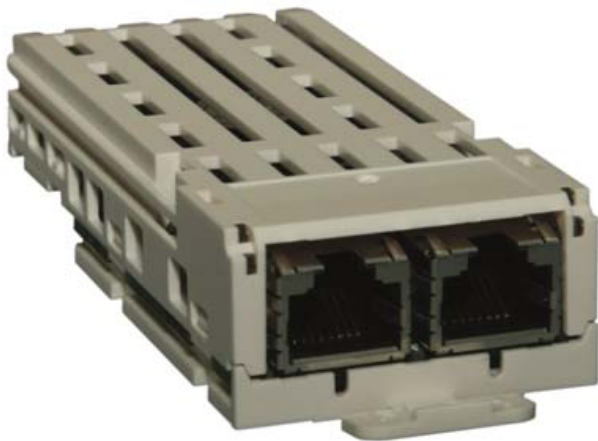
LXM32 Module

Product Range

LXM32 Module

Marketing Model

VW3M3619, VW3M3501, VW3M3403, VW3M3402, VW3M3401, VW3M3302, VW3M3301, VW3A3628, VW3A3618, VW3A3608, VW3A3607



Size in mm:

H x L x D : 41 x 101 x 23

Weight (excluding packaging) in g:

4584

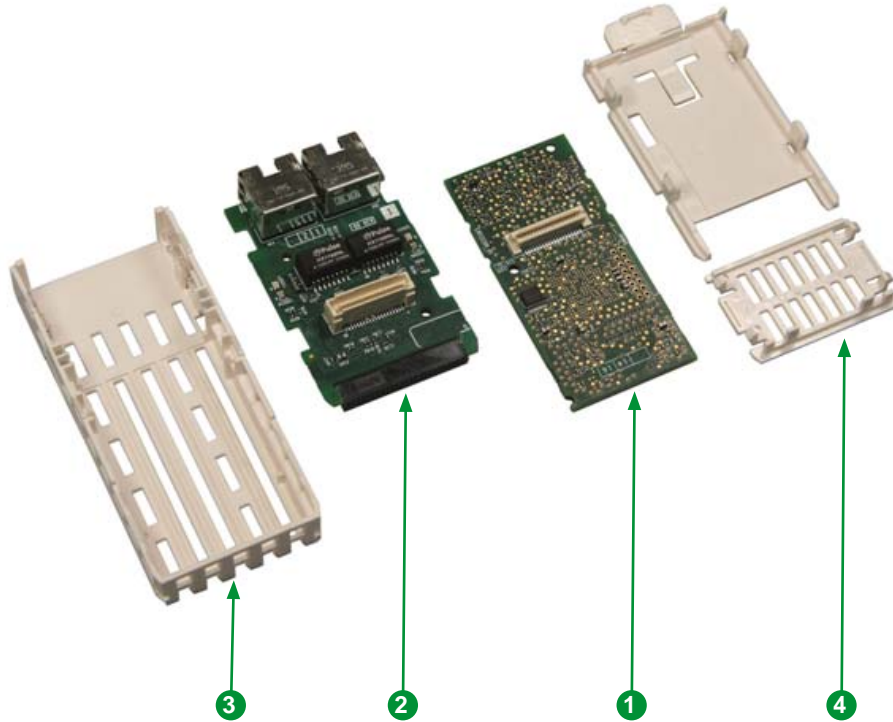


Operations recommended for the end of life treatment

There are several steps to process the products at the end of life so as to recover components, materials or energy :

Reuse ⇒ Separation for special treatment ⇒ Other Dismantling ⇒ Shredding

The components of the products that optimize the recycling performances are listed, identified and located hereunder.



Recommendation	Number on drawing	Components	Weight (g)	Comment
Depollution	1	Printed Circuit Board Assembly (PCBA)	10.64	–
	2	Printed Circuit Board Assembly (PCBA)	18.65	–
Dismantling	3	Front housing	11.10	–
	4	Back housing	5.06	–

Schneider Electric Industries SAS

35, rue Joseph Monier
CS30323
F - 92506 Rueil Malmaison Cedex

RCS Nanterre 954 503 439
Capital social 896 313 776 €
www.schneider-electric.com

The version of the Guide used to create the document: End of Life Instruction Drafting Guide of Schneider Electric version V1.

Publication : Schneider Electric