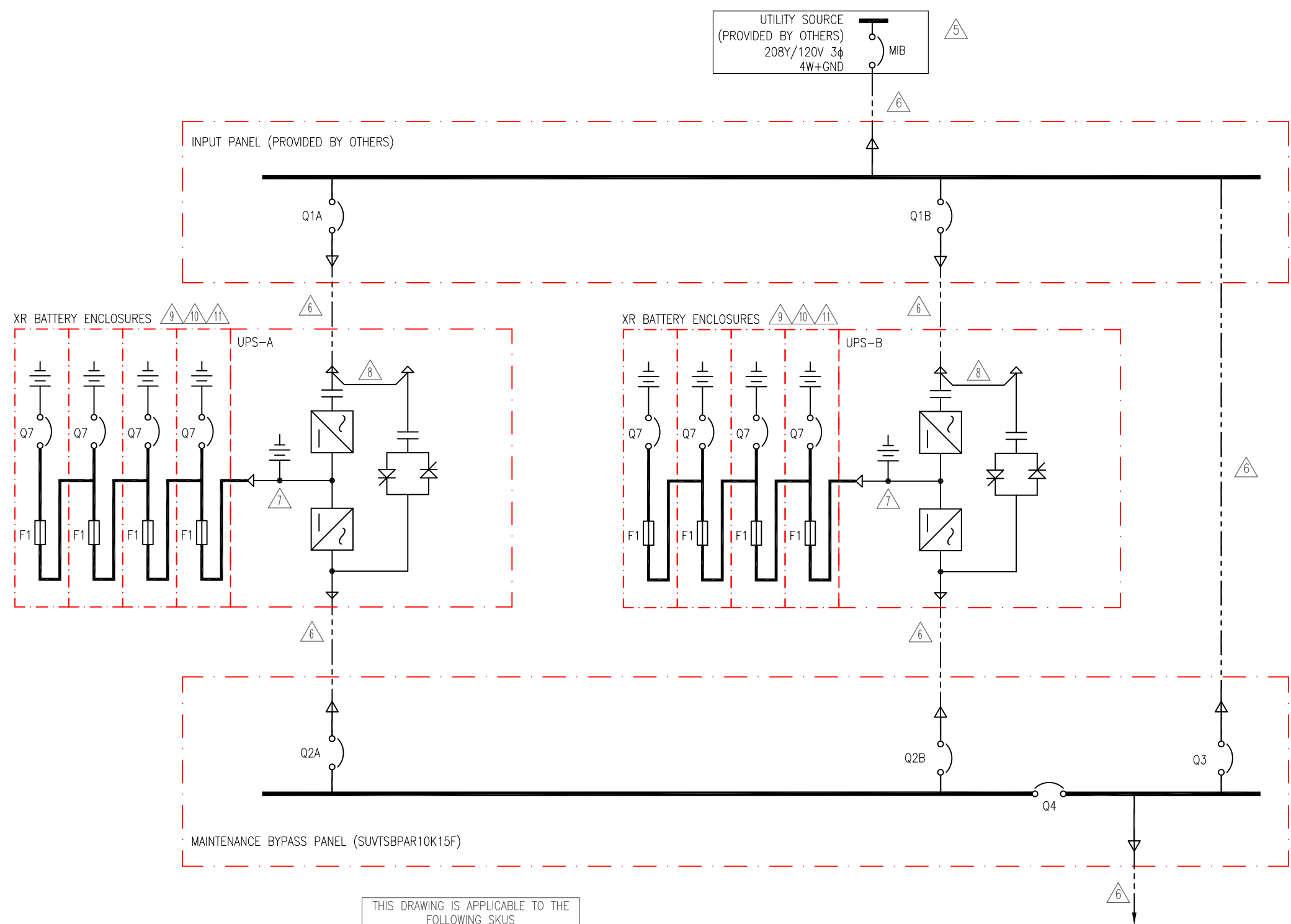


| OVERCURRENT PROTECTION DEVICE TABLE |               |                 |         |         |             |       |
|-------------------------------------|---------------|-----------------|---------|---------|-------------|-------|
| DEVICE                              | FUNCTION      | LOCATION        | CURRENT | RATING* | TYPE        | POLES |
| MIB†                                | SYS SOURCE    | -               | 53.5A   | 70AT†   | MCCB        | 3     |
| Q1                                  | UPS AC IN     | INPUT PANEL     | 26.7A   | 40AF†   | MCCB        | 3     |
| Q2                                  | UPS ANC OUT   | BYPASS PANEL    | 27.8A   | 60AF    | MCCB        | 4     |
| Q3, Q4                              | SYS OUT       | BYPASS PANEL    | 55.5A   | 175AF   | MCCB        | 4     |
| Q7                                  | DC DISCONNECT | BATTERY CABINET | 22.2A   | 250AF   | MCCB        | 4     |
| F1                                  | BATTERY FUSE  | BATTERY CABINET | 22.2A   | 125A    | FAST ACTING | 1     |

\* 80% CONTINUOUS DUTY RATED FOR BREAKER  
† (PROVIDED BY OTHERS) RECOMMENDED RATING



**NOTES:**

- INSTALLATION SHALL COMPLY WITH ALL APPLICABLE NATIONAL, STATE AND LOCAL CODES.
- PLEASE REFER TO PRODUCT DOCUMENTATION FOR ADDITIONAL DETAILS.
- DRAWING DEPICTS POWER SYSTEM CONNECTIONS AND IS NOT REPRESENTATIVE OF PHYSICAL LAYOUT, PLEASE REFER TO MECHANICAL DRAWINGS FOR PHYSICAL LAYOUT.
- ALL BREAKERS ARE 80% CONTINUOUS DUTY RATED.
- △ 5. AC SOURCE TO BE 208VAC, 4 WIRE, WYE CONNECTED, 3φ (CONTACT SCHNEIDER ELECTRIC IF OTHER)
- △ 6. AC CABLING TO BE 600V RATED, 4 WIRE + GROUND, AND SHALL BE RUN IN SEPARATE CONDUITS.
- △ 7. DC SOURCE TO BE 384VDC WITH CENTER TAP, 3 WIRE + GROUND.
- △ 8. SINGLE MAINS INSTALLATION IS A DEFAULT. BRIDGE BUS BARS SHALL NOT BE REMOVED.
- △ 9. XR BATTERY ENCLOSURE IS AVAILABLE WITHOUT BREAKER WITH DC FUSE ONLY
- △ 10. UP TO FOUR XR BATTERY ENCLOSURES MAY BE CONNECTED TO THE UPS TO EXTEND BACKUP TIME.
- △ 11. EXTERNAL BATTERY CABINET IS OPTIONAL. BAYING KITS HAVE TO BE PURCHASED AS AN OPTION. BATTERY SIZING IS BASED ON A MAXIMUM 1 VOLT DROP PER HALF-STRING AT NOMINAL RATED DC CURRENT. CE SHALL ADJUST CABLE SIZE BASED ON INSTALLATION PARAMETERS.
- CABLE LUGS ARE PROVIDED BY OTHERS.

| THIS DRAWING IS APPLICABLE TO THE FOLLOWING SKUS |                |
|--|----------------|
| 10kVA UPS SKUs                                   | SUVT10KF1B2    |
|  | SUVT10KF1B4    |
|  | SUVT10KF2B2    |
|  | SUVT10KF2B4    |
|  | SUVT10KF3B4    |
|  | SUVT10KF4B4    |
| XR BATTERY SKUs                                  | SUVTBXR2B6     |
|  | SUVTBXR6B6     |
|  | SUVTXR2B6      |
|  | SUVTXR6B6      |
| BYPASS PANEL                                     | SUVTBPAR10K15F |

| LINETYPE LEGEND: |                               |
|------------------|-------------------------------|
|                  | MECHANICAL ENCLOSURES         |
|                  | AC CABLE - PROVIDED BY OTHERS |
|                  | AC BUS (MBP)                  |
|                  | BUS CONNECTIONS FOR BREAKERS  |
|                  | DC BUS                        |

**SINGLE MAINS, W/BAYED XR BATTERY CABINETS**

THIS DRAWING AND SPECIFICATIONS HEREIN ARE THE PROPERTY OF SCHNEIDER ELECTRIC AND SHALL NOT BE COPIED, REPRODUCED OR USED IN WHOLE OR IN PART, AS THE BASIS FOR THE MANUFACTURE OR SALE OF ITEMS WITHOUT WRITTEN PERMISSION FROM SCHNEIDER ELECTRIC. THIS DRAWING IS BASED UPON LATEST AVAILABLE INFORMATION AND IS SUBJECT TO CHANGE WITHOUT NOTICE.



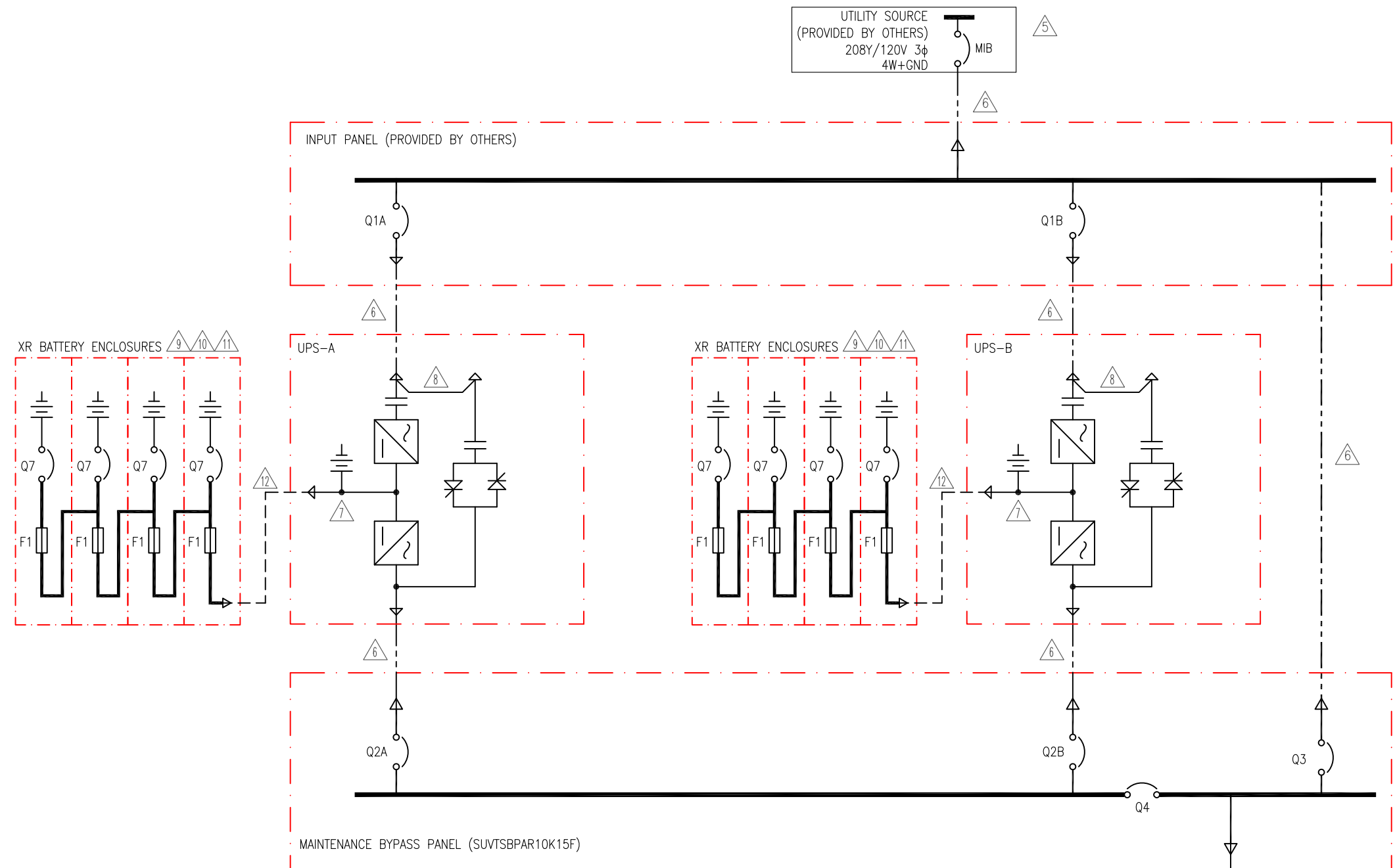
TITLE: SMART-UPS VT, PARALLEL SYSTEM  
INPUT: 208VAC, 3φ, SINGLE MAINS  
OUTPUT: 208VAC, 20kVA  
BAYED XR BATTERY ENCLOSURES  
SYSTEM ONE LINE DIAGRAM

PROJECT: SUBMITTAL DRAWINGS | SHEET 1 OF 2

| DWG NO: SUVTP10KF1C2-SD |               | REV. 2          |
|-------------------------|---------------|-----------------|
| DRAWN BY:               | M CRAVEN/BALA | 24-AUG-16       |
| ENGINEER:               | M LEPARD      | 24-AUG-16       |
| APPROVED:               | B SHERIDAN    | 24-AUG-16       |
|                         |               | PROJ ANGLE N.A. |

| OVERCURRENT PROTECTION DEVICE TABLE |               |                 |         |         |             |       |
|-------------------------------------|---------------|-----------------|---------|---------|-------------|-------|
| DEVICE                              | FUNCTION      | LOCATION        | CURRENT | RATING* | TYPE        | POLES |
| MIB†                                | SYS SOURCE    | -               | 53.5A   | 70AT†   | MCCB        | 3     |
| Q1                                  | UPS AC IN     | INPUT PANEL     | 26.7A   | 40AF†   | MCCB        | 3     |
| Q2                                  | UPS ANC OUT   | BYPASS PANEL    | 27.8A   | 60AF    | MCCB        | 4     |
| Q3, Q4                              | SYS OUT       | BYPASS PANEL    | 55.5A   | 175AF   | MCCB        | 4     |
| Q7                                  | DC DISCONNECT | BATTERY CABINET | 22.2A   | 250AF   | MCCB        | 4     |
| F1                                  | BATTERY FUSE  | BATTERY CABINET | 22.2A   | 125A    | FAST ACTING | 1     |

\* 80% CONTINUOUS DUTY RATED FOR BREAKER  
† (PROVIDED BY OTHERS) RECOMMENDED RATING



**NOTES:**

- INSTALLATION SHALL COMPLY WITH ALL APPLICABLE NATIONAL, STATE AND LOCAL CODES.
- PLEASE REFER TO PRODUCT DOCUMENTATION FOR ADDITIONAL DETAILS.
- DRAWING DEPICTS POWER SYSTEM CONNECTIONS AND IS NOT REPRESENTATIVE OF PHYSICAL LAYOUT, PLEASE REFER TO MECHANICAL DRAWINGS FOR PHYSICAL LAYOUT.
- ALL BREAKERS ARE 80% CONTINUOUS DUTY RATED.
- AC SOURCE TO BE 208VAC, 4 WIRE, WYE CONNECTED, 3φ (CONTACT SCHNEIDER ELECTRIC IF OTHER)
- AC CABLING TO BE 600V RATED, 4 WIRE + GROUND, AND SHALL BE RUN IN SEPARATE CONDUITS.
- DC SOURCE TO BE 384VDC WITH CENTER TAP, 3 WIRE + GROUND.
- SINGLE MAINS INSTALLATION IS A DEFAULT. BRIDGE BUS BARS SHALL NOT BE REMOVED.
- XR BATTERY ENCLOSURE IS AVAILABLE WITHOUT BREAKER WITH DC FUSE ONLY
- UP TO FOUR XR BATTERY ENCLOSURES MAY BE CONNECTED TO THE UPS TO EXTEND BACKUP TIME.
- EXTERNAL BATTERY CABINET IS OPTIONAL. BAYING KITS HAVE TO BE PURCHASED AS AN OPTION. BATTERY SIZING IS BASED ON A MAXIMUM 1 VOLT DROP PER HALF-STRING AT NOMINAL RATED DC CURRENT. CE SHALL ADJUST CABLE SIZE BASED ON INSTALLATION PARAMETERS.
- DC CABLING TO BE 600V RATED, 3W+GND, SHALL BE RUN IN SEPARATE CABLING CONDUITS.
- CABLE LUGS ARE PROVIDED BY OTHERS.

| THIS DRAWING IS APPLICABLE TO THE FOLLOWING SKUs |                |
|--|----------------|
| 10kVA UPS SKUs                                   | SUVT10KF1B2    |
|  | SUVT10KF1B4    |
|  | SUVT10KF2B2    |
|  | SUVT10KF2B4    |
|  | SUVT10KF3B4    |
|  | SUVT10KF4B4    |
| XR BATTERY SKUs                                  | SUVTBXR2B6     |
|  | SUVTBXR6B6     |
|  | SUVTXR2B6      |
|  | SUVTXR6B6      |
| BYPASS PANEL                                     | SUVTBPAR10K15F |

| LINETYPE LEGEND: |                               |
|------------------|-------------------------------|
|                  | MECHANICAL ENCLOSURES         |
|                  | AC CABLE - PROVIDED BY OTHERS |
|                  | DC CABLE - PROVIDED BY OTHERS |
|                  | AC BUS (MBP)                  |
|                  | BUS CONNECTIONS FOR BREAKERS  |
|                  | DC BUS                        |

UPS SYSTEM OUTPUT  
20kVA, 208Y/120V, 3φ  
4W+GND

**SINGLE MAINS, W/REMOTE XR BATTERY CABINETS**

THIS DRAWING AND SPECIFICATIONS HEREIN ARE THE PROPERTY OF SCHNEIDER ELECTRIC AND SHALL NOT BE COPIED, REPRODUCED OR USED IN WHOLE OR IN PART, AS THE BASIS FOR THE MANUFACTURE OR SALE OF ITEMS WITHOUT WRITTEN PERMISSION FROM SCHNEIDER ELECTRIC. THIS DRAWING IS BASED UPON LATEST AVAILABLE INFORMATION AND IS SUBJECT TO CHANGE WITHOUT NOTICE.



TITLE: SMART-UPS VT, PARALLEL SYSTEM  
INPUT: 208VAC, 3φ, SINGLE MAINS  
OUTPUT: 208VAC, 20kVA  
REMOTE XR BATTERY ENCLOSURES  
SYSTEM ONE LINE DIAGRAM  
PROJECT: SUBMITTAL DRAWINGS | SHEET 2 OF 2

| DWG NO: SUVTP10KF1C2-SD |               | REV: 2          |
|-------------------------|---------------|-----------------|
| DRAWN BY:               | M CRAVEN/BALA | 24-AUG-16       |
| ENGINEER:               | M LEPARD      | 24-AUG-16       |
| APPROVED:               | B SHERIDAN    | 24-AUG-16       |
|                         |               | PROJ ANGLE N.A. |