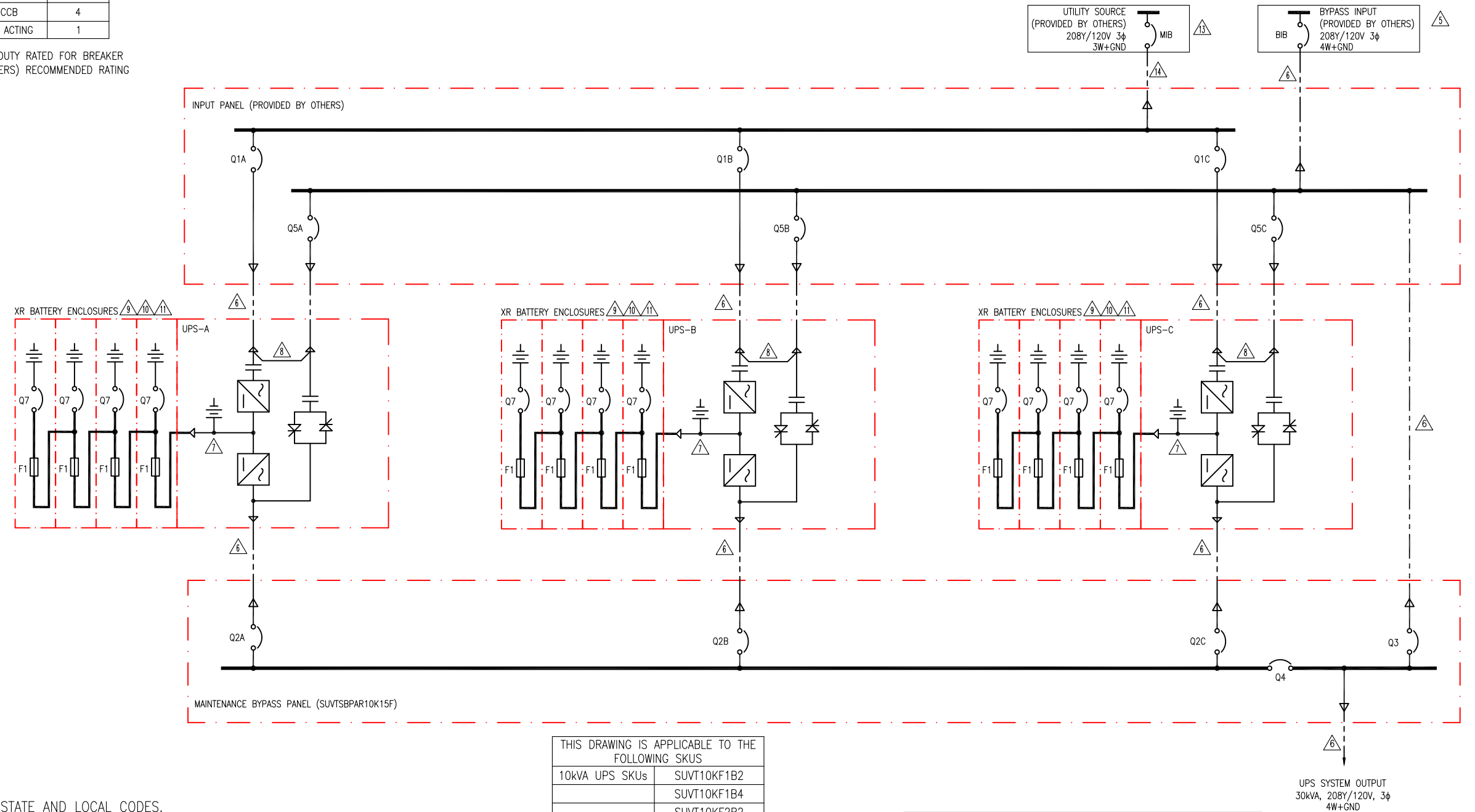


BREAKER	FUNCTION	LOCATION	CURRENT	BREAKER RATING*	TYPE	POLES
MIB†	SYS SOURCE	—	80.2A	125AT†	MCCB	3
BIB†	BYP SOURCE	—	83.3A	125AT†	MCCB	3
Q1	UPS AC IN	INPUT PANEL	26.7A	40AF†	MCCB	3
Q2	UPS AC OUT	BYPASS PANEL	27.8A	60AF	MCCB	4
Q3, Q4	SYS OUT	BYPASS PANEL	83.3A	175AF	MCCB	4
Q5	UPS INT SSW INPUT	INPUT PANEL	27.8A	40AF†	MCCB	3
Q7	DC DISCONNECT	DC DISCONNECT	22.2A	250A	MCCB	4
F1	BATTERY FUSE	DC DISCONNECT	22.2A	125A	FAST ACTING	1

* 80% CONTINUOUS DUTY RATED FOR BREAKER
† (PROVIDED BY OTHERS) RECOMMENDED RATING



NOTES:

- INSTALLATION SHALL COMPLY WITH ALL APPLICABLE NATIONAL, STATE AND LOCAL CODES.
- PLEASE REFER TO PRODUCT DOCUMENTATION FOR ADDITIONAL DETAILS.
- DRAWING DEPICTS POWER SYSTEM CONNECTIONS AND IS NOT REPRESENTATIVE OF PHYSICAL LAYOUT, PLEASE REFER TO MECHANICAL DRAWINGS FOR PHYSICAL LAYOUT.
- ALL BREAKERS ARE 80% CONTINUOUS DUTY RATED.
- AC SOURCE TO BE 208VAC, 4 WIRE, WYE CONNECTED, 3φ (CONTACT SCHNEIDER ELECTRIC IF OTHER).
- AC CABLING TO BE 600V RATED, 4 WIRE + GROUND, AND SHALL BE RUN IN SEPARATE CONDUITS.
- DC SOURCE TO BE 384VDC WITH CENTER TAP, 3 WIRE + GROUND.
- SINGLE MAINS INSTALLATION IS A DEFAULT. BRIDGE BUS BARS SHALL BE REMOVED FOR DUAL MAINS INSTALLATIONS.
- XR BATTERY ENCLOSURE IS AVAILABLE WITHOUT BREAKER WITH DC FUSE ONLY
- UP TO FOUR XR BATTERY ENCLOSURES MAY BE CONNECTED TO THE UPS TO EXTEND BACKUP TIME.
- EXTERNAL BATTERY CABINET IS OPTIONAL. BAYING KITS HAVE TO BE PURCHASED AS AN OPTION. BATTERY SIZING IS BASED ON A MAXIMUM 1 VOLT DROP PER HALF-STRING AT NOMINAL RATED DC CURRENT. CE SHALL ADJUST CABLE SIZE BASED ON INSTALLATION PARAMETERS.
- CABLE LUGS ARE PROVIDED BY OTHERS.
- AC SOURCE TO BE 208VAC, 3 WIRE, WYE CONNECTED, 3φ (CONTACT SCHNEIDER ELECTRIC IF OTHER).
- AC CABLING TO BE 600V RATED, 3 WIRE + GROUND, AND SHALL BE RUN IN SEPARATE CONDUITS.

THIS DRAWING IS APPLICABLE TO THE FOLLOWING SKUs	
10kVA UPS SKUs	SUVT10KF1B2 SUVT10KF1B4 SUVT10KF2B2 SUVT10KF2B4 SUVT10KF3B4 SUVT10KF4B4
XR BATTERY SKUs	SUVTBXR2B6 SUVTBXR6B6 SUVTXR2B6 SUVTXR6B6
BYPASS PANEL	SUVTBPAR10K15F

LINETYPE LEGEND:	
	MECHANICAL ENCLOSURES
	AC CABLE - PROVIDED BY OTHERS
	AC BUS (MBP)
	BUS CONNECTIONS FOR BREAKERS
	DC BUS

DUAL MAINS, W/BAYED XR BATTERY CABINETS

THIS DRAWING AND SPECIFICATIONS HEREIN ARE THE PROPERTY OF SCHNEIDER ELECTRIC AND SHALL NOT BE COPIED, REPRODUCED OR USED IN WHOLE OR IN PART, AS THE BASIS FOR THE MANUFACTURE OR SALE OF ITEMS WITHOUT WRITTEN PERMISSION FROM SCHNEIDER ELECTRIC. THIS DRAWING IS BASED UPON LATEST AVAILABLE INFORMATION AND IS SUBJECT TO CHANGE WITHOUT NOTICE.

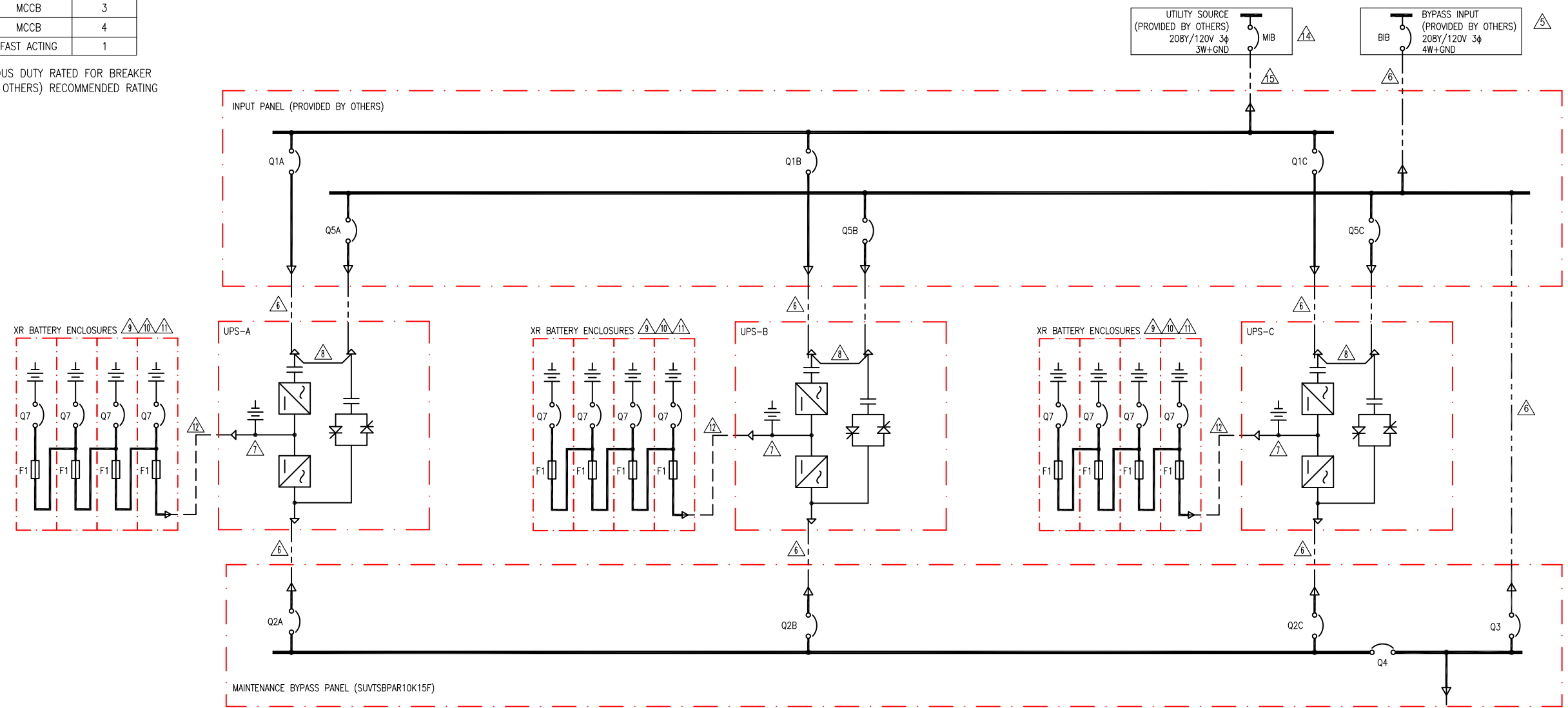


TITLE: SMART-UPS VT, PARALLEL SYSTEM
INPUT: 208VAC, 3φ, DUAL MAINS
OUTPUT: 208VAC, 30kVA
BAYED XR BATTERY ENCLOSURES
SYSTEM ONE LINE DIAGRAM
PROJECT: SUBMITTAL DRAWINGS SHEET 1 OF 2

DWG NO:	REV:
SUVT10KF2C3-SD	4
DRAWN BY: C KRISHNA/BALA	24-AUG-16
ENGINEER: M MAISSY	24-AUG-16
APPROVED: M MAISSY	24-AUG-16
PROJ ANGLE	N.A.

BREAKER	FUNCTION	LOCATION	CURRENT	BREAKER RATING*	TYPE	POLES
MIB†	SYS SOURCE	—	80.2A	125AT†	MCCB	3
BIB†	BYP SOURCE	—	83.3A	125AT†	MCCB	3
Q1	UPS AC IN	INPUT PANEL	26.7A	40AF†	MCCB	3
Q2	UPS AC OUT	BYPASS PANEL	27.8A	60AF	MCCB	4
Q3, Q4	SYS OUT	BYPASS PANEL	83.3A	175AF	MCCB	4
Q5	UPS INT SSW INPUT	INPUT PANEL	27.8A	40AF†	MCCB	3
Q7	DC DISCONNECT	DC DISCONNECT	22.2A	250A	MCCB	4
F1	BATTERY FUSE	DC DISCONNECT	22.2A	125A	FAST ACTING	1

* 80% CONTINUOUS DUTY RATED FOR BREAKER
† (PROVIDED BY OTHERS) RECOMMENDED RATING



THIS DRAWING IS APPLICABLE TO THE FOLLOWING SKUS

10kVA UPS SKUs	SUVT10KF1B2
	SUVT10KF1B4
	SUVT10KF2B2
	SUVT10KF2B4
	SUVT10KF3B4
	SUVT10KF4B4
XR BATTERY SKUs	SUVTXR2B6
	SUVTXR6B6
	SUVTXR2B6
	SUVTXR6B6
BYPASS PANEL	SUVTSPAR10K15F

LINETYPE LEGEND:

	MECHANICAL ENCLOSURES
	AC CABLE - PROVIDED BY OTHERS
	AC BUS (MBP)
	BUS CONNECTIONS FOR BREAKERS
	DC BUS

- NOTES:**
- INSTALLATION SHALL COMPLY WITH ALL APPLICABLE NATIONAL, STATE AND LOCAL CODES.
 - PLEASE REFER TO PRODUCT DOCUMENTATION FOR ADDITIONAL DETAILS.
 - DRAWING DEPICTS POWER SYSTEM CONNECTIONS AND IS NOT REPRESENTATIVE OF PHYSICAL LAYOUT, PLEASE REFER TO MECHANICAL DRAWINGS FOR PHYSICAL LAYOUT.
 - ALL BREAKERS ARE 80% CONTINUOUS DUTY RATED.
 - AC SOURCE TO BE 208VAC, 4 WIRE, WYE CONNECTED, 3φ (CONTACT SCHNEIDER ELECTRIC IF OTHER).
 - AC CABLING TO BE 600V RATED, 4 WIRE + GROUND, AND SHALL BE RUN IN SEPARATE CONDUITS.
 - DC SOURCE TO BE 384VDC WITH CENTER TAP, 3 WIRE + GROUND.
 - SINGLE MAINS INSTALLATION IS A DEFAULT. BRIDGE BUS BARS SHALL BE REMOVED FOR DUAL MAINS INSTALLATIONS.
 - XR BATTERY ENCLOSURE IS AVAILABLE WITHOUT BREAKER WITH DC FUSE ONLY
 - UP TO FOUR XR BATTERY ENCLOSURES MAY BE CONNECTED TO THE UPS TO EXTEND BACKUP TIME.
 - EXTERNAL BATTERY CABINET IS OPTIONAL. BAYING KITS HAVE TO BE PURCHASED AS AN OPTION. BATTERY SIZING IS BASED ON A MAXIMUM 1 VOLT DROP PER HALF-STRING AT NOMINAL RATED DC CURRENT. CE SHALL ADJUST CABLE SIZE BASED ON INSTALLATION PARAMETERS.
 - DC CABLING TO BE 600V RATED, 3W+GND, SHALL BE RUN IN SEPARATE CABLING CONDUITS.
 - CABLE LUGS ARE PROVIDED BY OTHERS.
 - AC SOURCE TO BE 208VAC, 3 WIRE, WYE CONNECTED, 3φ (CONTACT SCHNEIDER ELECTRIC IF OTHER)
 - AC CABLING TO BE 600V RATED, 3 WIRE + GROUND, AND SHALL BE RUN IN SEPARATE CONDUITS.

DUAL MAINS, W/REMOTE XR BATTERY CABINETS

	THIS DRAWING AND SPECIFICATIONS HEREIN ARE THE PROPERTY OF SCHNEIDER ELECTRIC AND SHALL NOT BE COPIED, REPRODUCED OR USED IN WHOLE OR IN PART, AS THE BASIS FOR THE MANUFACTURE OR SALE OF ITEMS WITHOUT WRITTEN PERMISSION FROM SCHNEIDER ELECTRIC. THIS DRAWING IS BASED UPON LATEST AVAILABLE INFORMATION AND IS SUBJECT TO CHANGE WITHOUT NOTICE.	TITLE: SMART-UPS VT, PARALLEL SYSTEM INPUT: 208VAC, 3φ, DUAL MAINS OUTPUT: 208VAC, 30kVA REMOTE XR BATTERY ENCLOSURES SYSTEM ONE LINE DIAGRAM	DWG NO: SUVTP10KF2C3-SD REV: 4	
	PROJECT: SUBMITTAL DRAWINGS SHEET 2 OF 2	DRAWN BY: C KRISHNA/BALA ENGINEER: M MAISSY APPROVED: M MAISSY	DATE: 24-AUG-16 DATE: 24-AUG-16 DATE: 24-AUG-16	PROJ ANGLE: N.A.