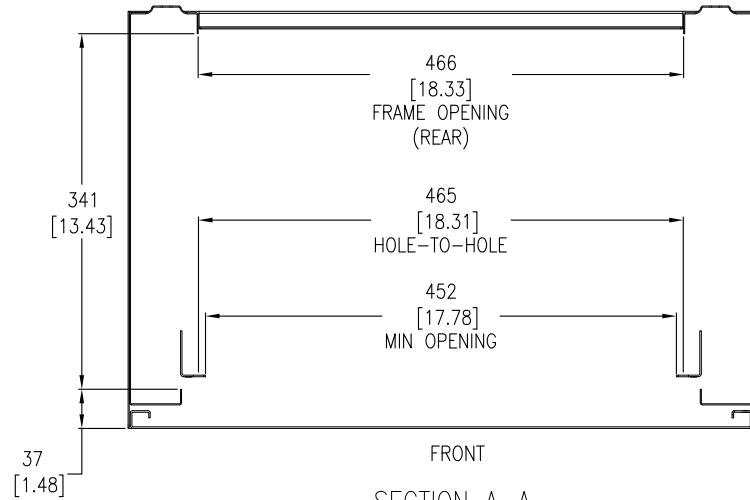
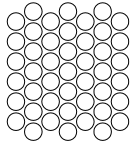


FRONT VIEW

LEFT SIDE VIEW

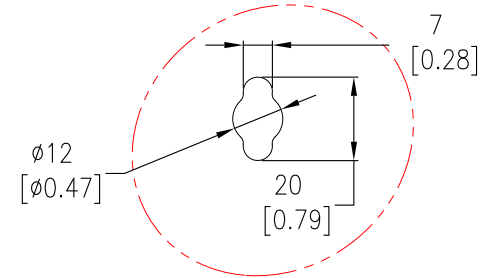
REAR VIEW

PERFORATED AREA
(TYPICAL PATTERN)



SECTION A-A

WALL MOUNTING HOLES
4 PLACES
(REFER TO VIEW-A
FOR DETAILS)



VIEW-A (ENLARGED)

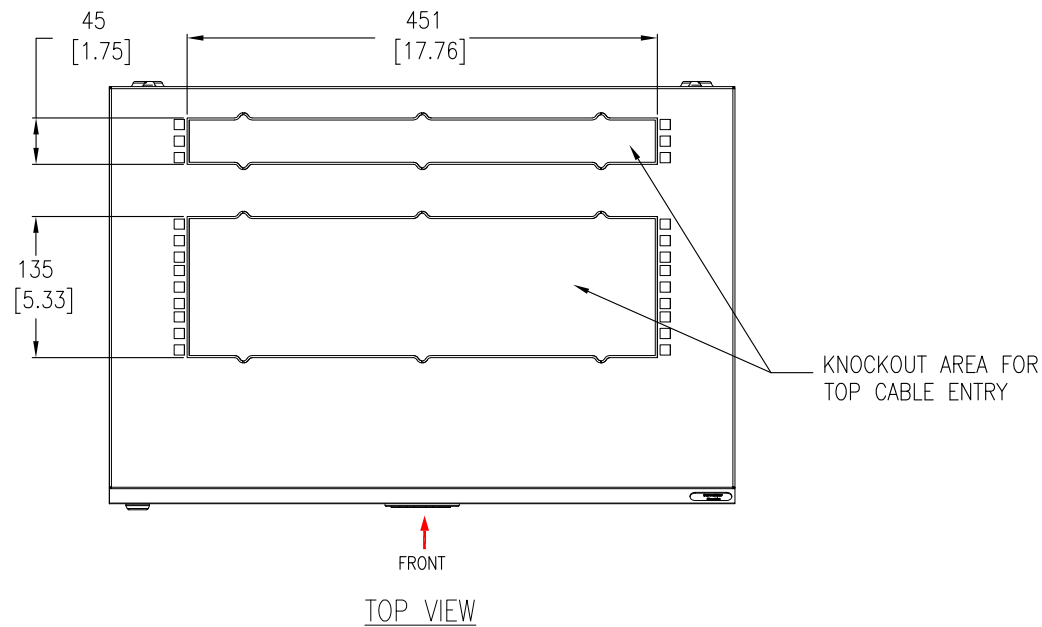
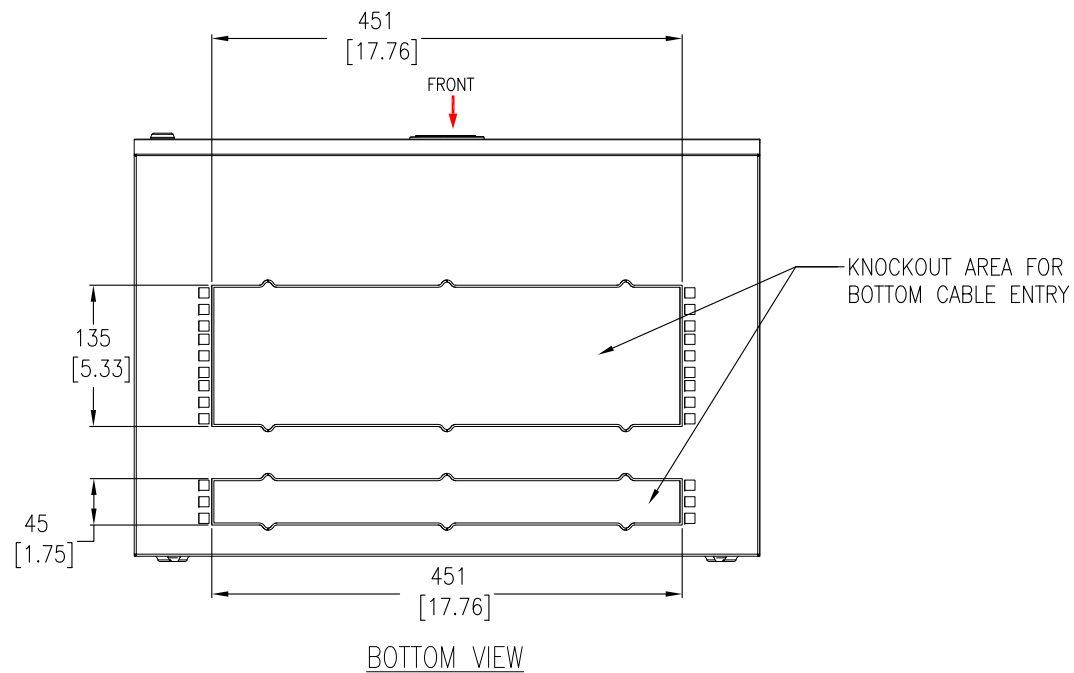
NOTES:

1. INSTALLATION MUST COMPLY WITH NATIONAL AND LOCAL ELECTRICAL REGULATIONS.
2. ENCLOSURE CAN BE REVERSED TO ACCOMMODATE VARIOUS CONFIGURATION, SO THAT DOOR OPENS IN THE OPPOSITE DIRECTION. PLEASE REFER TO THE PRODUCT MANUALS FOR DETAILED INFORMATION.
3. ALL DIMENSIONS ARE IN MILLIMETERS [INCHES].
4. NET WEIGHT OF UNIT IS 12.7kg [28 LBS].
5. CABLE ENTRY IS TOP OR BOTTOM OF UNIT.
6. AIR FLOW AND SERVICE REQUIREMENTS, AS WELL AS MINIMUM CLEARANCE TO FIRE SUPPRESSION SYSTEMS SHOULD BE CONSIDERED WHEN LOCATING THE ENCLOSURE.

THIS DRAWING AND SPECIFICATIONS HEREIN ARE THE PROPERTY OF SCHNEIDER ELECTRIC AND SHALL NOT BE COPIED, REPRODUCED OR USED IN WHOLE OR IN PART, AS THE BASIS FOR THE MANUFACTURE OR SALE OF ITEMS WITHOUT WRITTEN PERMISSION FROM SCHNEIDER ELECTRIC. THIS DRAWING IS BASED UPON LATEST AVAILABLE INFORMATION AND IS SUBJECT TO CHANGE WITHOUT NOTICE.



TITLE:	NetShelter WX 9U WALL MOUNT CABINET GENERAL ARRANGEMENT	DWG NO:	AR109	REV:	0
		DRAWN BY:	JAYAPRAKASH	07-MAY-15	FIRST
		ENGINEER:	PETER FISCHER	08-MAY-15	ANGLE
PROJECT: SUBMITTAL DRAWINGS	SHEET 1 OF 3	APPROVED BY:	GREG IVEY	08-MAY-15	PROJ



NOTES:

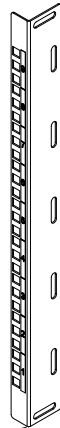
1. INSTALLATION MUST COMPLY WITH NATIONAL AND LOCAL ELECTRICAL REGULATIONS.
2. ALL DIMENSIONS ARE MILLIMETERS [INCHES].

THIS DRAWING AND SPECIFICATIONS HEREIN ARE THE PROPERTY OF SCHNEIDER ELECTRIC AND SHALL NOT BE COPIED, REPRODUCED OR USED IN WHOLE OR IN PART, AS THE BASIS FOR THE MANUFACTURE OR SALE OF ITEMS WITHOUT WRITTEN PERMISSION FROM SCHNEIDER ELECTRIC. THIS DRAWING IS BASED UPON LATEST AVAILABLE INFORMATION AND IS SUBJECT TO CHANGE WITHOUT NOTICE.



TITLE:	NetShelter WX 9U WALL MOUNT CABINET TOP AND BOTTOM VIEWS	DWG NO:	AR109	REV:	0
PROJECT:	SUBMITTAL DRAWINGS	SHEET:	2 OF 3	APPROVED BY:	GREG IVEY
ENGINEER:	PETER FISCHER	DATE:	08-MAY-15	ANGLE:	FIRST
DRAWN BY:	JAYAPRAKASH	DATE:	07-MAY-15	PROJ:	ANGLE

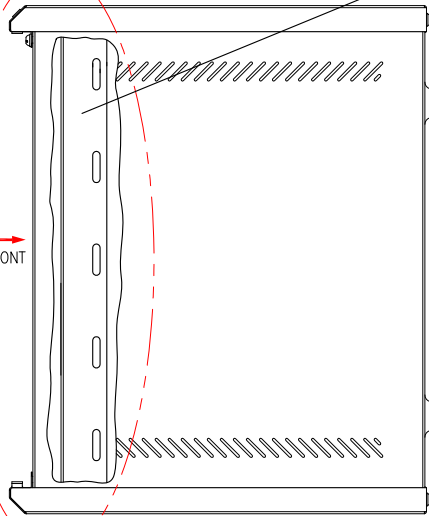
MOUNTING FLANGE



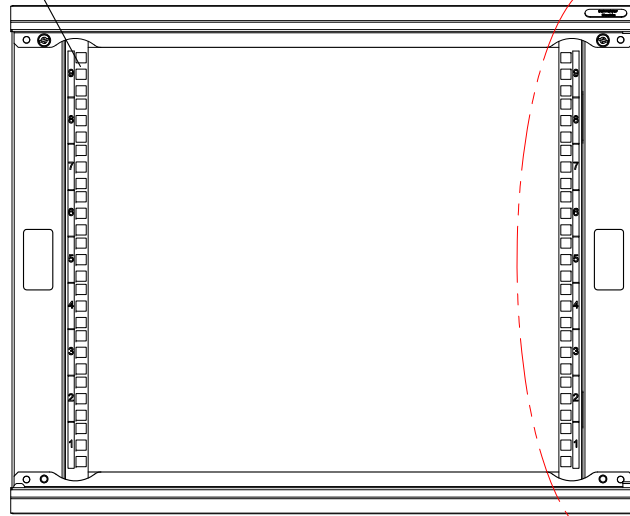
REFER TO VIEW - C

REFER TO VIEW - B

FRONT



RIGHT SIDE VIEW



FRONT VIEW
(FRONT DOOR REMOVED)

9.5 [0.37] SQUARE SLOT
FOR USING CAGE NUTS
(27 PLACES)

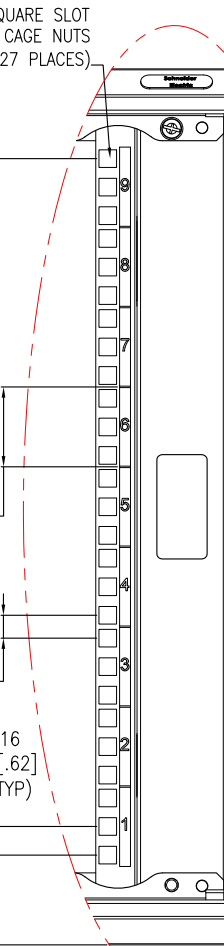
387.35
[15.25]

44.45
[1.75]
(1U)

13
[.50]
(TYP)

16
[.62]
(TYP)

50
[1.97]



VIEW -B
(MOUNTING FLANGE)
ENLARGED VIEW

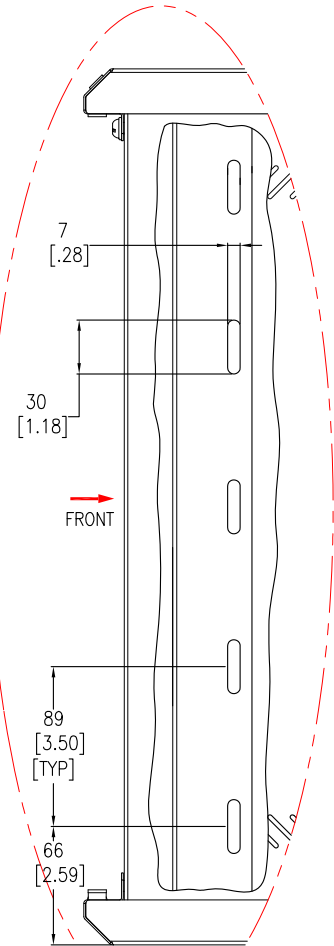
7
[.28]

30
[1.18]

FRONT

89
[3.50]
[TYP]

66
[2.59]



VIEW -C
(MOUNTING FLANGE)
ENLARGED VIEW

NOTES:

1. INSTALLATION MUST COMPLY WITH NATIONAL AND LOCAL ELECTRICAL REGULATIONS.
2. ALL DIMENSIONS ARE MILLIMETERS [INCHES].

THIS DRAWING AND SPECIFICATIONS HEREIN ARE THE PROPERTY OF SCHNEIDER ELECTRIC AND SHALL NOT BE COPIED, REPRODUCED OR USED IN WHOLE OR IN PART, AS THE BASIS FOR THE MANUFACTURE OR SALE OF ITEMS WITHOUT WRITTEN PERMISSION FROM SCHNEIDER ELECTRIC. THIS DRAWING IS BASED UPON LATEST AVAILABLE INFORMATION AND IS SUBJECT TO CHANGE WITHOUT NOTICE.



TITLE:
NetShelter WX 9U
WALL MOUNT CABINET
INTERNAL VIEW & MOUNTING DETAILS

DWG NO: AR109

REV: 0

DRAWN BY: JAYAPRAKASH 07-MAY-15

FIRST

ENGINEER: PETER FISCHER 08-MAY-15

ANGLE

PROJECT: SUBMITTAL DRAWINGS SHEET 3 OF 3

APPROVED BY: GREG IVEY 08-MAY-15

PROJ