

NEMA SIZE 00, 0, 1 REVERSING STARTER
3-POLE POLYPHASE - 600 VAC, 50-60 HZ

NEMA SIZE	CONTINUOUS CURRENT RATINGS	TYPE CODE (1)
00	9	AD16
0	18	BD4
1	27	CD8

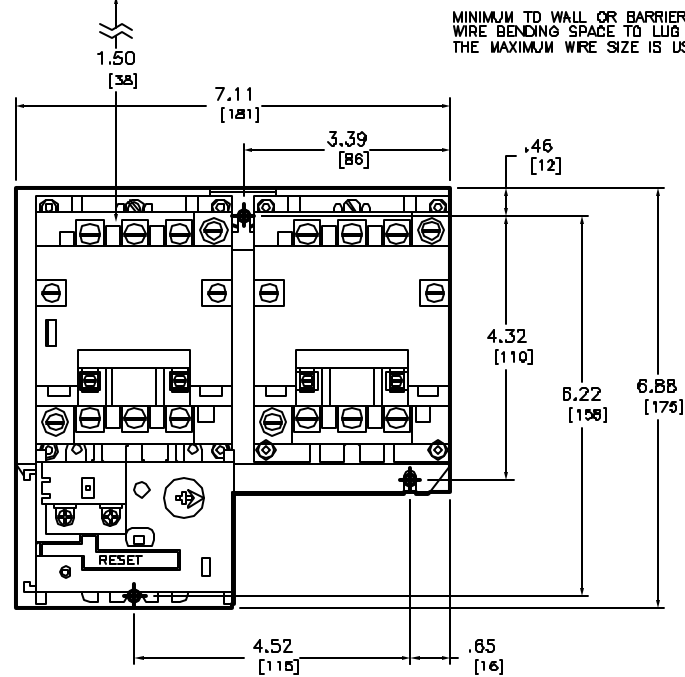
DCIL VOLTAGE CODE (2)	VOLTAGE	
	60 HZ	50 HZ
V01	24	-
V02	120	110
V08	208	-
V03	240	220
V06	480	440
V07	600	550
V99	SPECIFY	SPECIFY

= 120 Volt Polyphase starters are wired for separate control.

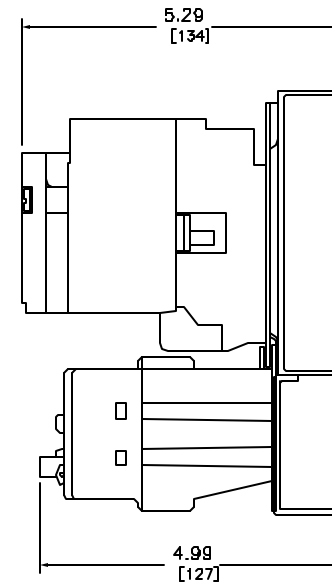
TYPE CODE (3)	SOLID STATE OVERLOAD RELAY PROTECTION
H10	CLASS 10
H20	CLASS 20
H30	SELECTABLE CLASS 10/20

MOTOR VOLTS	MAX. HP FOR NEMA SIZE		
	00	0	1
200	1.5	3	7.5
230	1.5	3	7.5
460	2	5	10
575	2	5	10

ELECTRICAL CLEARANCE/WIRE BENDING SPACE



MINIMUM TO WALL OR BARRIER TO INSURE ADEQUATE WIRE BENDING SPACE TO LUG SURFACE WHEN THE MAXIMUM WIRE SIZE IS USED. REF. NEC 430-10



Catalog Number: 8736-S(1)(2)(3)
 Ratings: SEE CHART
 UL File/CCN: NLDX
 CSA File/Class: 32011-04
 Meets Standards: -
 Weight: 6.88 lbs
 Wire Size: POWER - #14-#8, CONTROL - #18-#12
 Terminal torque: 20 lb./in.
 Mounting Hwd.: (3) #10 screws

DUAL DIMENSIONS: INCHES
MILLIMETERS

NEMA SIZE 00, 0, 1 REVERSING STARTER W/SSOLR
CLASS 8736 TYPE 5(1)(2)(3)



DWG# E0320801-01
NO.