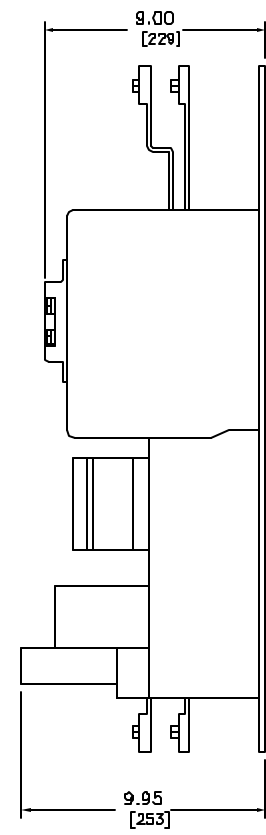
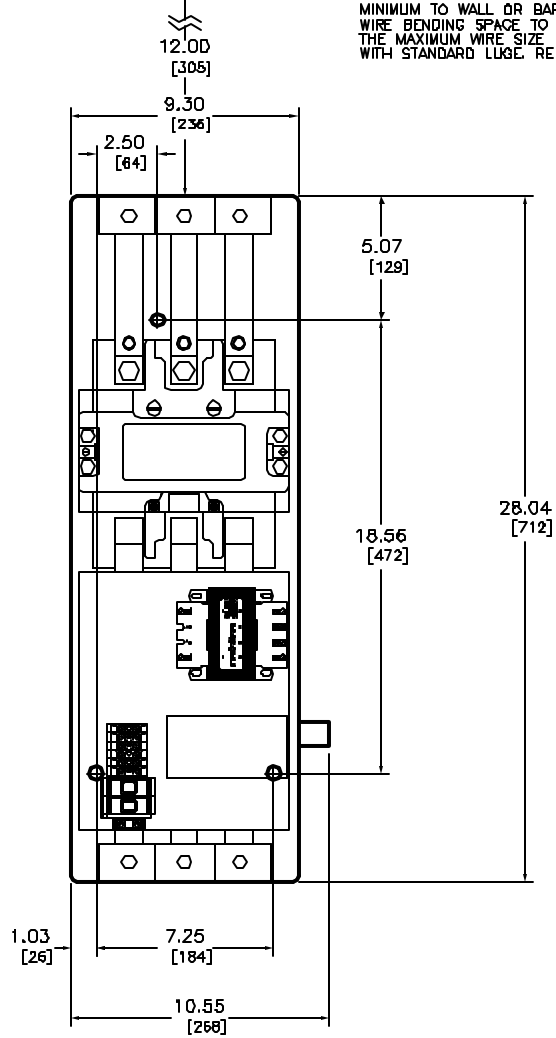


ELECTRICAL CLEARANCE/WIRE BENDING SPACE

MINIMUM TO WALL OR BARRIER TO INSURE ADEQUATE WIRE BENDING SPACE TO LUG SURFACE WHEN THE MAXIMUM WIRE SIZE IS USED WITH STANDARD LUGE. REF. NEC 430-10



NEMA SIZE 4 CONTACTOR
3-POLE POLYPHASE - 600 VAC, 50-60 HZ

COIL VOLTAGE CODE (1)	VOLTAGE	
	60 HZ	50 HZ
V02	120	110
V08	208	-
V03	240	220
V06	480	440
V07	600	650
V99	SPECIFY	SPECIFY

Catalog Number: B502-SH02(1)
 Ratings: SEE CHART
 UL File/CCN: E78351/NLDX
 CSA File/Class: LR60905/3211 D
 Meets Standards: -
 Weight: 80.00 lbs
 Wire Size: POWER - (1 or 2)250MCM-500MCM | CONTROL -#16-#12
 Terminal torque: 375 LB/IN
 Mounting hwd.: (3) 1/2" screws

DUAL DIMENSIONS: INCHES
MILLIMETERS

NEMA SIZE 6 CONTACTOR
CLASS B502 TYPE SH02(1)



DWG# E0300801-01
NO.