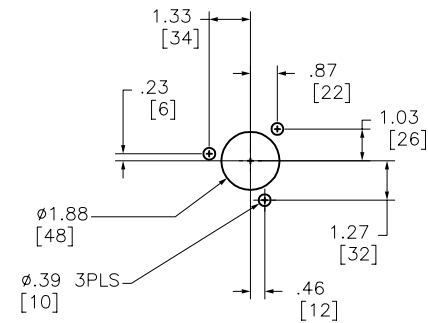


Minimum to wall or barrier to insure adequate wire bending space to lug surface when the maximum wire size is used. REF. NEC 430-10

ROTARY HANDLE ENCLOSURE DOOR DRILLING



Catalog Number: D10S3, D10S3H
 Ratings: STARTER NEMA SIZE 3 (100A/600V)
 UL File/CCN: E6849
 CSA File/Class: LR12721
 Meets Standards:
 Weight: D10S3-8.00 lbs/D10S3H-7.35 lbs
 Wire Size: #14-#1/0
 Terminal torque: #14-#10 35 lb-in | #8 40 lb-in | #6-#4 45 lb-in | #3-#1/0 50 lb-in
 Mounting Hwd: (4)-1/4-20 screws

"THE SQUARE D COMPANY HAS PROPRIETARY RIGHTS TO THE INFORMATION CONTAINED HEREON. THIS INFORMATION REMAINS THE PROPERTY OF SQUARE D COMPANY AND MAY BE USED ONLY IN CONFORMANCE WITH INSTRUCTIONS ISSUED BY SQUARE D COMPANY. USER SHOULD VERIFY DRAWINGS ARE TO THE LATEST/CURRENT REVISION PRIOR TO INCORPORATING IN A DESIGN FILE."

DO NOT SCALE DRAWING
 UNLESS OTHERWISE SPECIFIED DIMENSIONS ARE IN INCHES

THIRD ANGLE PROJECTION

TOLERANCES
 UNLESS OTHERWISE SPECIFIED
 2 PLACE DECIMALS ± .01

DISCONNECT
 D10S3, D10S3H

SQUARE D COMPANY

DWG# D10S_OUTLINE_003
 NO.