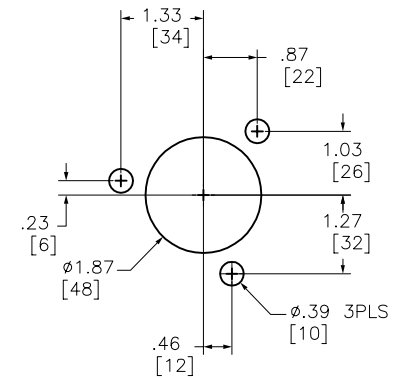


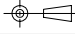
**ROTARY HANDLE ENCLURE
DOOR DRILLING**



Catalog Number: D10S1, D10S1H
 Ratings: STARTER NEMA SIZE 0-1 (30A/600V)
 UL File/Guide: E6849
 CSA File/Guide: LR12721
 Meets Standards: -
 Weight: D10S1-6.15 lbs/S=D10S1 H-7.35 lbs
 Wire Size: #4-#8
 Terminal torque: 35-40 lb-in
 Mounting Hwd.: (4)#10-24 screws

"THE SQUARE D COMPANY HAS PROPRIETARY RIGHTS TO THE INFORMATION CONTAINED HEREON. THIS INFORMATION REMAINS THE PROPERTY OF SQUARE D COMPANY AND MAY BE USED ONLY IN CONFORMANCE WITH INSTRUCTIONS ISSUED BY SQUARE D COMPANY. USER SHOULD VERIFY DRAWINGS ARE TO THE LATEST/CURRENT REVISION PRIOR TO INCORPORATING IN A DESIGN FILE."

DO NOT SCALE DRAWING
 UNLESS OTHERWISE SPECIFIED DIMENSIONS ARE IN INCHES

THIRD ANGLE PROJECTION 
 TOLERANCES
 UNLESS OTHERWISE SPECIFIED
 2 PLACE DECIMALS ± .01

DISCONNECT
 D10S1, D10S1H

 **SQUARE D COMPANY**

DWG# D10S_OUTLINE_001
 NO.