



# StruxureWare™ Data Center Operation for Colocation

End to end data center infrastructure management software for  
monitoring and control of power, cooling, security and energy usage from  
the building through IT systems

[www.apc.com/struxureware](http://www.apc.com/struxureware)

Life Is On

**Schneider**  
Electric

## StruxureWare Data Center Operation



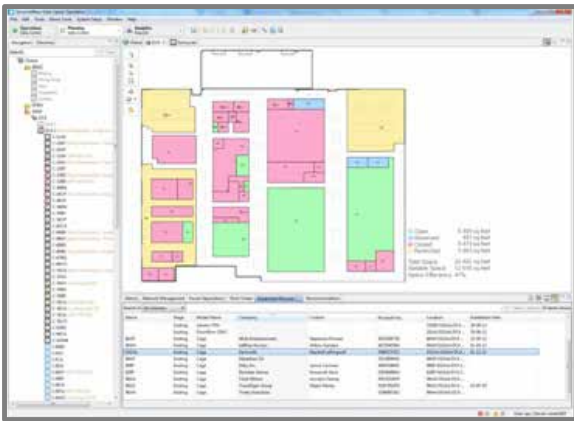
### StruxureWare Data Center Operation for Colocation

#### Asset and cage space management for an optimized multi-tenant data center.

Data Center Operation for Colocation enables vendor-agnostic inventory management with real-time device failures and data shown within your data center physical layout, as well as recommendations on how to resolve issues.

#### Visualization

Visualize new cages during the pre-sales phase for planning potential new customer cages and supporting the sales process



Data Center Operation for Colocation extends the usage of DCIM tools to the multi-tenant sales process, where it provides instant visualization of space available for selling on to tenants, broken down by used, reserved and available capacity, and identifies how much is required going forward.

This expands the user group of DCIM into the front office of the business - making it a driver for business development.

#### Optimizing the multi-tenant data center

Data Center Operation for Colocation transforms the way that multi-tenant providers are doing business by optimizing data center capacities and business processes, which in turn frees up valuable time to focus on developing the business.

#### AT A GLANCE

> The application provides multi-tenant providers with a real-time status of their current data center capacities, in terms of data center power, cooling & space, and the ability to drill down further and identify any constraints for expansion.

> With cage space management the data center operator can import CAD drawings, apply grid-based naming for floor mount equipment, utilize cage drawing tools and cage power modeling and visualize the solution in 3D.

> Facility maintenance is made easy through a complete audit trail on all facility equipment and cages, the ability to create and track maintenance schedules by equipment and use impact analysis to ensure redundancy is maintained during maintenance.

> The open system integrates tenant billing information into the DCIM system for mapping tenant assets, providing detailed power draw, total energy footprint and access to an instant impact analysis at the tenant level

## Peace-of-mind software services

Schneider Electric™ offers a comprehensive portfolio of services to support and enhance our StruxureWare for Data Centers software. These services are designed to simplify deployment, reduce costs, and address your key concerns and challenges. Our software services provide you with peace of mind that your applications will receive the care they need to operate at optimal levels at all times.



### Software Installation

- Ensures that all software products are installed correctly by a highly skilled field service engineer and are quickly ready for use in your dynamic data center.

### Software Configuration

- Configures the system quickly and precisely to emulate your unique data center, in turn allowing you to make critical decisions that will save you time and money.

### Software Support Contracts

- Ensures you stay up to date with the latest software releases and technical support

### Software Enhancement

- Provides customized dashboards and enhanced reports to meet your business needs.

### Solution Deployment Management

- Provides a single point of contact to oversee the installation, configuration, integration, customization, and enhancement of the DCIM software solution.

### Software Preventive Maintenance

- Grants on-site visits to review, analyze, detect, and prevent system failures while optimizing the use of the DCIM tool.

### Software Integration

- Provides planning, designs, and project management for the integration of StruxureWare for Data Centers software into your existing software or system, providing you with a customized view into your existing applications.

### Software Education

- Offers hands-on training on key features, operational skills, and best practices, enabling you to get the most from your DCIM.

## The Schneider Electric winning recipe for service excellence

### Dedicated Resources

- Worldwide network of certified field service engineers
- Available 24/7
- Allows data center and facilities managers to focus on their day-to-day activities

### Methodology

- Our technical statements of work follow a structured methodology of work procedures that adhere to industry best practices

### Execution

- Deployment management
- Safety is a top priority
- Operation process compliance
- Scheduling

### Tools

- Latest software updates
- Latest firmware updates
- Access to DCIM support
- HW equipment

### Performance

- Fast and efficient service delivery
- Highly trained resources ensure StruxureWare for Data Centers is operating at optimal performance levels

## For more information...

### Additional Resources

#### Visit white papers.apc.com

Read more about the technology and research behind StruxureWare for Data Centers.

> How Data Center Infrastructure Management Software Improves Planning and Cuts Operational Costs (#107).

> Avoiding Common Pitfalls of Evaluating and Implementing DCIM Solutions (#170).

> Virtualization and Cloud Computing: Optimized Power, Cooling, and Management Maximizes Benefits (#118).

> Guidelines for Specification of Data Center Power Density (#120).

> Allocating Data Center Energy Costs and Carbon to IT Users (#161).

> Estimating a Data Center's Electrical Carbon Footprint (#66).

#### View videos

Visit tv.schneider-electric.com to watch our StruxureWare for Data Centers videos and customer testimonials.

> [www.youtube.com/user/SchneiderCorporate](http://www.youtube.com/user/SchneiderCorporate)

> [tv.schneider-electric.com](http://tv.schneider-electric.com)

#### Read our Blogs

Discussing challenges and trends of DCIM, and inviting you to join in.

> [Blog.schneider-electric.com/datacenter](http://Blog.schneider-electric.com/datacenter)

#### Follow us on Twitter

For updates on all news on StruxureWare for Data Centers.

> [www-twitter.com/StruxureWare\\_DC](http://www-twitter.com/StruxureWare_DC)

#### Need additional information?

Check out our webpages or DCIMsupport for answers to your questions.

> [www.apc.com/struxureware](http://www.apc.com/struxureware)

> [DCIMsupport.apc.com](http://DCIMsupport.apc.com)

Life Is On

**Schneider**  
Electric