

MAXIMUM HORSEPOWER RATINGS FOR 3 PHASE MOTORS

VOLTAGE (V)	200V	230V	460V	575V
HORSEPOWER	60	75	150	175
MAXIMUM CURRENT	INDUCTIVE (AC3) -- 265A			
	RESISTIVE (AC1) -- 285A			
AUXILIARY CONTACTS BUILT-IN	NO -- 1*			
	NC -- 0			

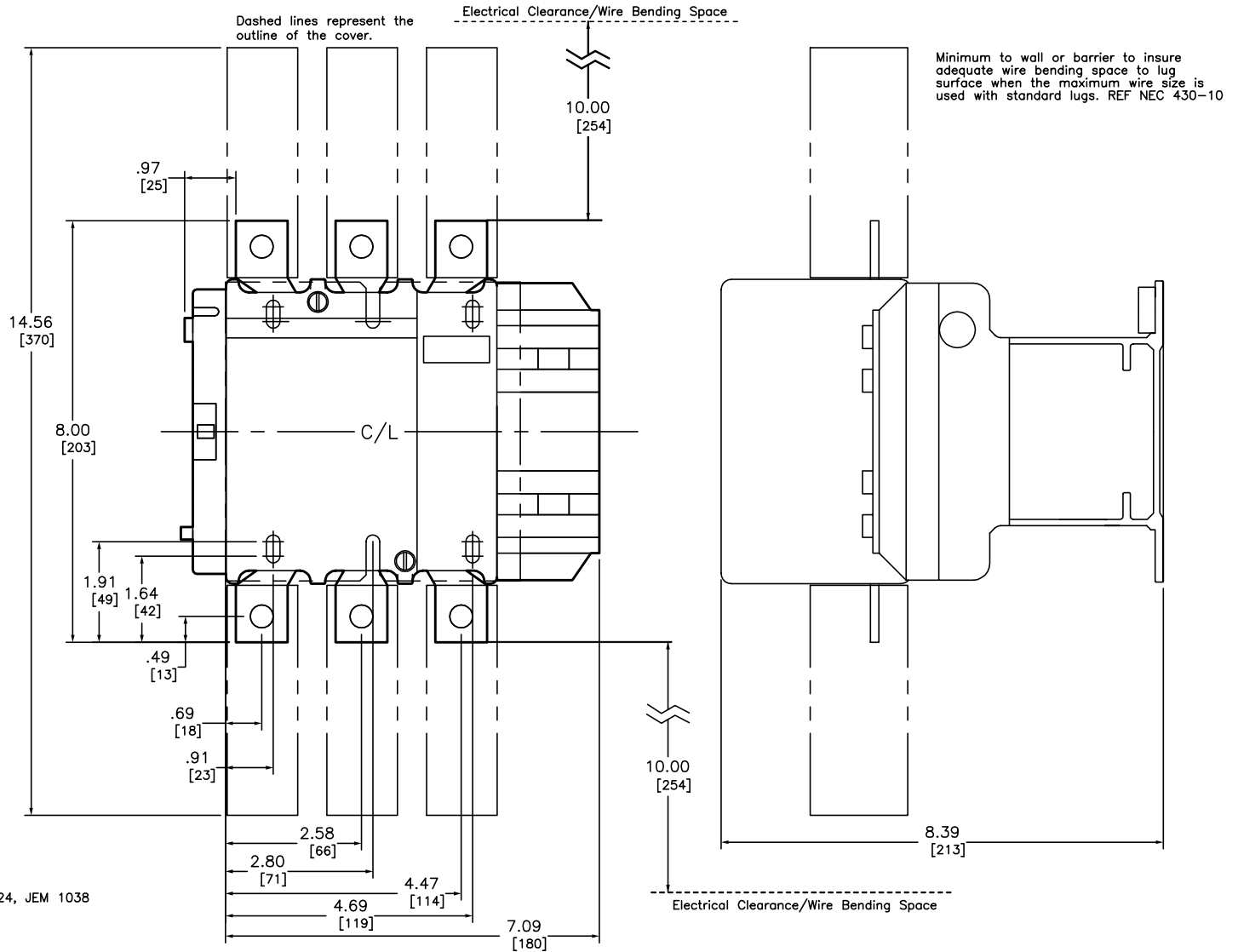
*THIS ONE NORMALLY OPEN HOLDING CIRCUIT CONTACT IS INCORPORATED IN THE DESIGN OF THE COIL.

COIL VOLTAGE CODE

VOLTS	50/60 HZ AC COIL CODE (1)	DC COIL CODE (1)
24	B7	BD
48	E7	ED
110	F7	FD
120	G7	-
125	-	GD
208	L7	-
220	M7	MD
240	U7	-
250	-	UD
380	Q7	-
415	Q7	-
440	-	RD
480	S7	-
600	X7	-

(1) = SELECT DESIRED SUFFIX FOR COMPLETE CATALOG NUMBER

Catalog Number: LC1 F265(1)
 Ratings: SEE CHART
 UL File/Guide: -
 CSA File/Guide: -
 Meets Standards: IEC 158-1, 947-4, NFC 63-110, VDE 0660, BS 5424, JEM 1038
 Weight: -
 Wire Size: LUG KIT (D22 FH6) -- MAX CABLE SIZE 300MCM
 Terminal torque: -
 Mounting Hwd.: -



IEC 3-POLE NON-REVERSING CONTACTOR
 AC OR DC (F-LINE)
 LC1 F265 (1)



DWG# E0220301-01
 NO.