

MAXIMUM HORSEPOWER RATINGS FOR 3 PHASE MOTORS

VOLTAGE (V)	200V	230V	460V	575V
HORSEPOWER	30	40	75	100
MAXIMUM CURRENT	INDUCTIVE (AC3) -- 115A			
	RESISTIVE (AC1) -- 175A			
AUXILIARY CONTACTS BUILT-IN	NO -- 1*			
	NC -- 0			

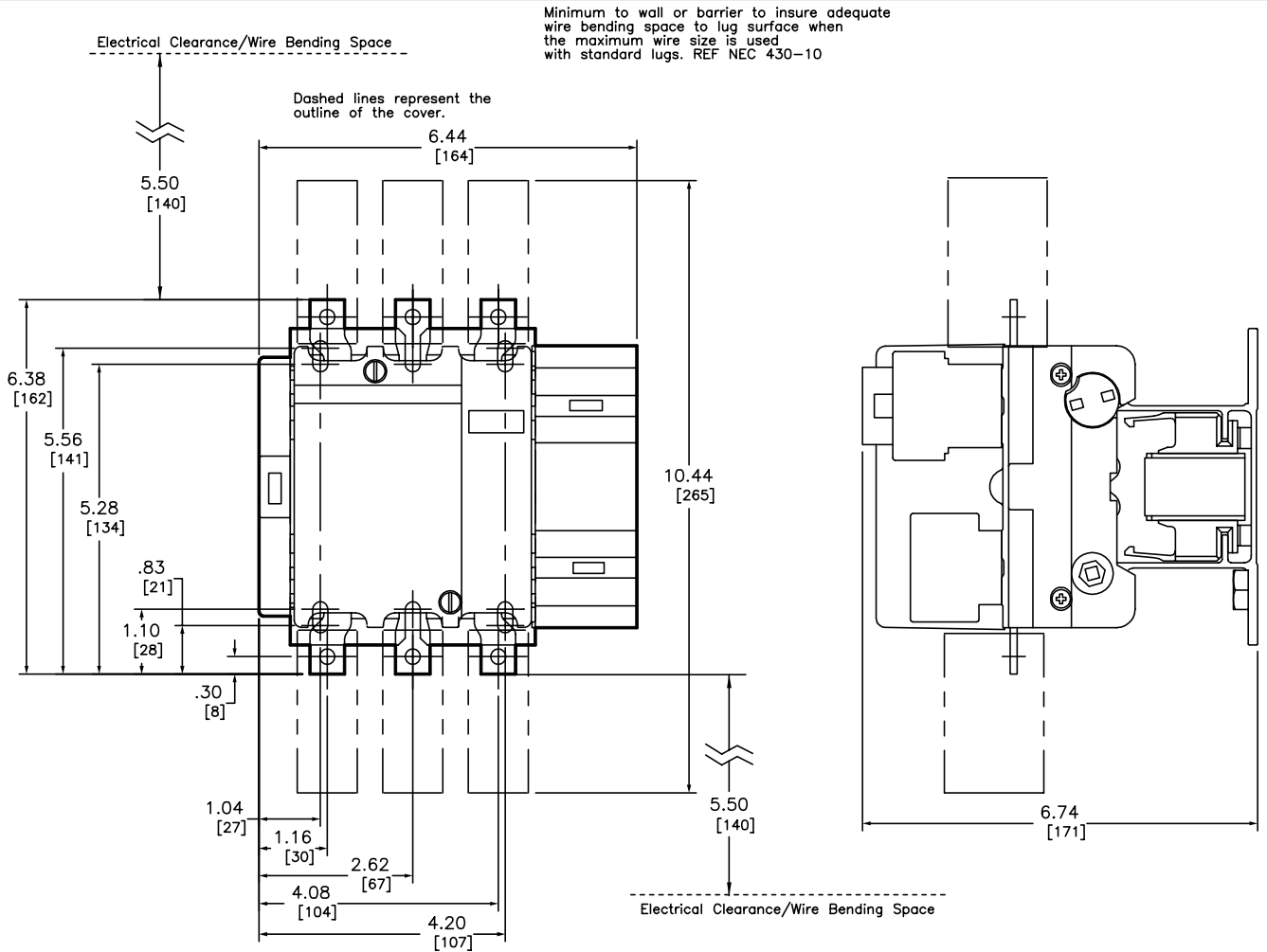
*THIS ONE NORMALLY OPEN HOLDING CIRCUIT CONTACT IS INCORPORATED IN THE DESIGN OF THE COIL.

COIL VOLTAGE CODE

VOLTS	50 HZ AC COIL CODE (1)	DC COIL CODE (1)
24	B5	BD
48	E5	ED
110	F5	FD
120	-	-
125	-	GD
208	-	-
220	M5	MD
240	U5	-
250	-	UD
380	Q5	-
415	-	-
440	-	RD
480	-	-
600	-	-

(1) = SELECT DESIRED SUFFIX FOR COMPLETE CATALOG NUMBER

Catalog Number: LC1 F115(1)
 Ratings: SEE CHART
 UL File/Guide: -
 CSA File/Guide: -
 Meets Standards: IEC 158-1, 947-4, NFC 63-110, VDE 0660, BS 5424, JEM 1038
 Weight: -
 Wire Size: LUG KIT (D22 FG6) - MAX CABLE SIZE 2/0
 Terminal torque: -
 Mounting Hwd.: -



Minimum to wall or barrier to insure adequate wire bending space to lug surface when the maximum wire size is used with standard lugs. REF NEC 430-10

Dashed lines represent the outline of the cover.

Electrical Clearance/Wire Bending Space

NOTE: For new installations, use LC1D150 contactor in place of LC1F150

IEC 3-POLE NON-REVERSING CONTACTOR
 AC OR DC (F-LINE)
 LC1 F115 (1)



DWG# E0220001-01
 NO.