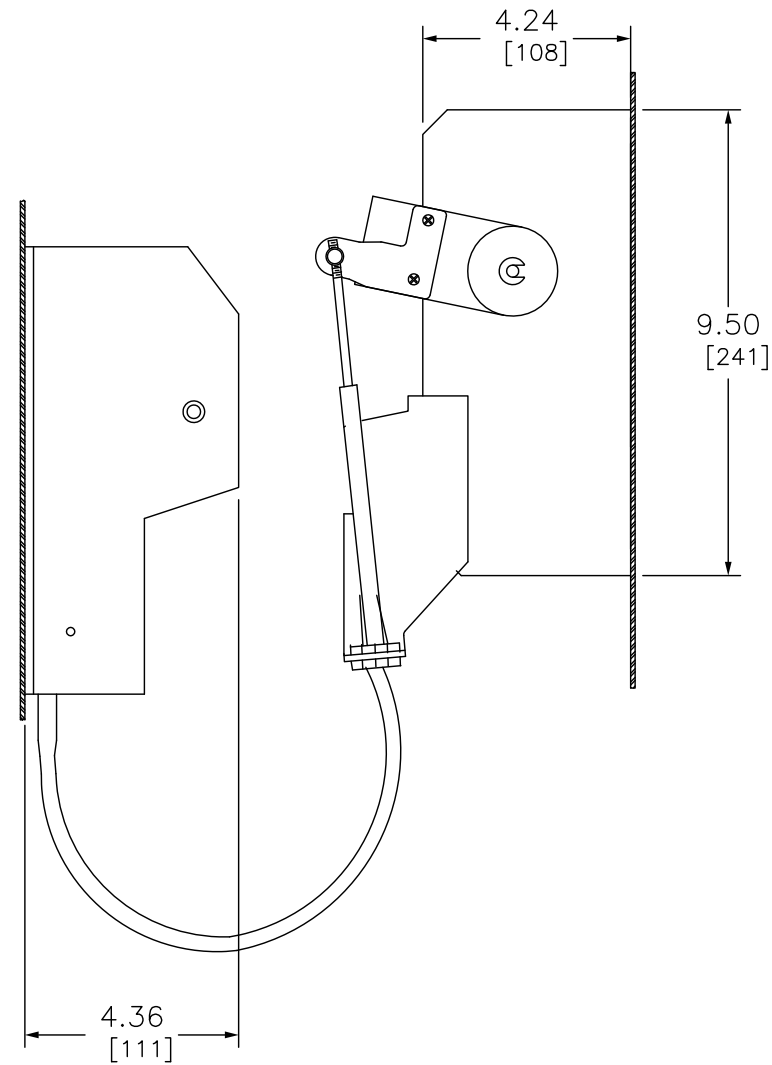
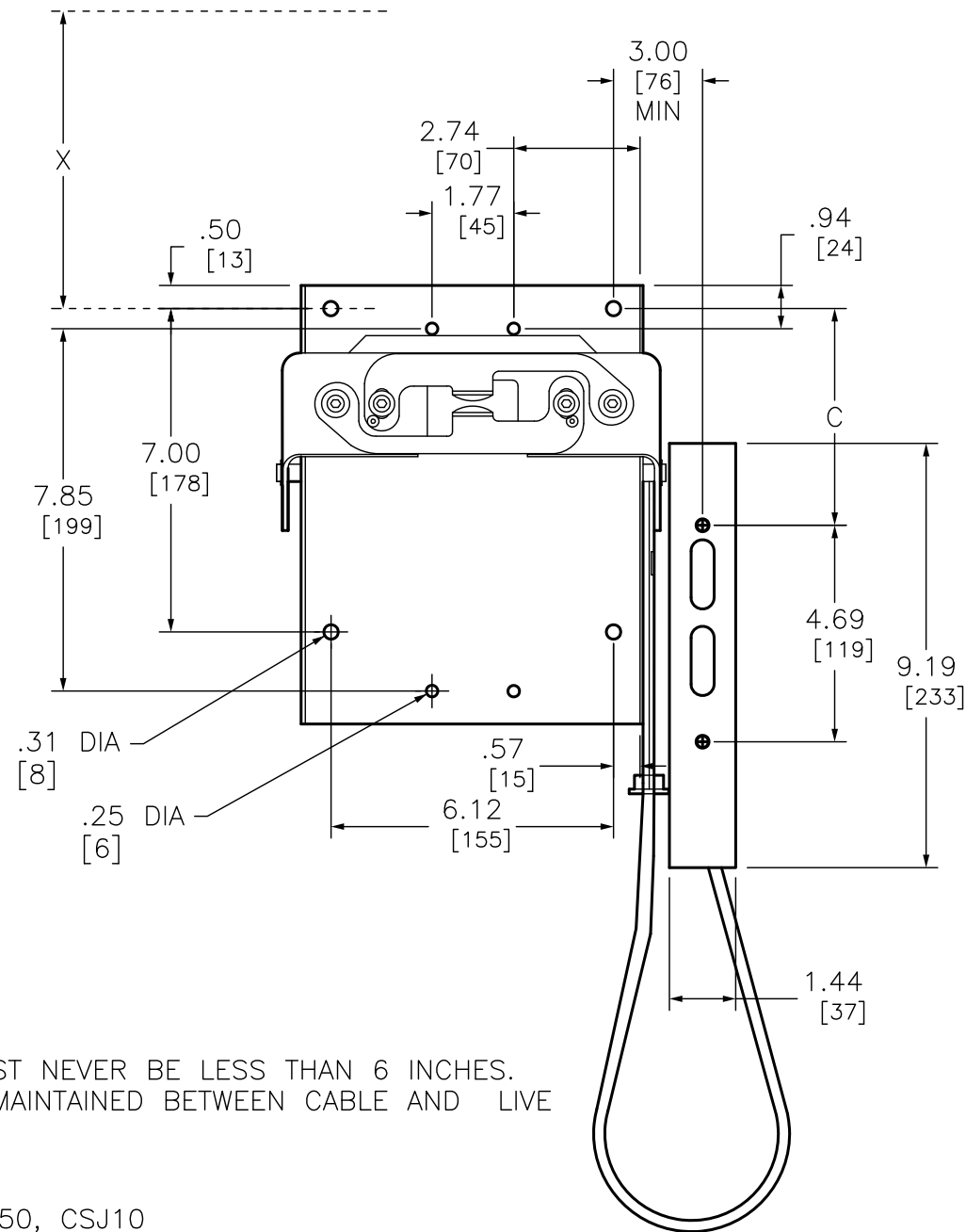


REFER TO NEC ARTICLE 430-10 FOR MINIMUM DIMENSION X FROM CIRCUIT BREAKER TOP MOUNTING HOLE TO WALL OR BARRIER TO ENSURE ADEQUATE WIRE BENDING SPACE.



CABLE MECHANISMS FOR USE WITH CLASS 9422 TYPE NSJ 3 POLE CIRCUIT BREAKER.				
TYPE	CABLE LENGTH	MAXIMUM BOX DEPTH	MAXIMUM DISTANCE FROM TOP RIGHT MOUNTING HOLE TO UPPER MOUNTING HOLE FOR HANDLE OPERATOR (DIM C)	
			MINIMUM C	MAXIMUM C
CSJ30	36"	24"	3.75"	7"
CSJ50	60"	36"	3.75"	24"
CSJ10	120"	36"	3.75"	5 FEET

NOTE: BEND RADIUS IN CABLE MUST NEVER BE LESS THAN 6 INCHES. ELECTRICAL CLEARANCES MUST BE MAINTAINED BETWEEN CABLE AND LIVE ELECTRICAL PARTS.

Catalog Number: 9422-CSJ30, CSJ50, CSJ10
 Ratings: -
 UL File/Guide: E62922/DIHS2
 CSA File/Guide: -
 Meets Standards: -
 Weight: 8.5 lbs
 Wire Size: -
 Terminal torque: -
 Mounting Hwd.: (8) #14-20 screws

DUAL DIMENSIONS: INCHES
MILLIMETERS

OPERATING MECHANISM CABLE MECHANISM NEMA



DWG# 9422CSJ30
NO.