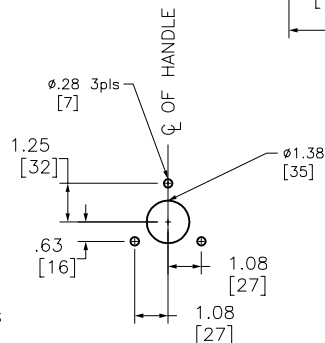
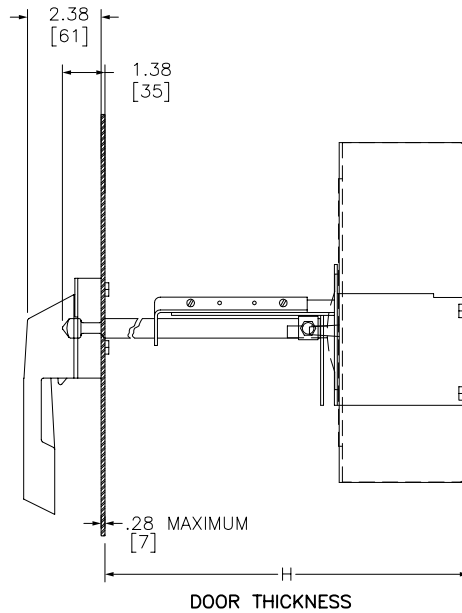


Minimum to wall or barrier to insure adequate wire bending space to lug surface when the maximum wire size is used with standard lugs. REF NEC 430-10



KIT	OPER. MECH.	HANDLE	SHAFT
LP1	LR1	LH6 (6")	LS8 (STD)
LP4	LR1	LH6 (6")	LS10 (LONG)

H=Standard shaft		H=Long shaft	
MIN	MAX	MIN	MAX
6.31 [160]	10.88 [276]	6.31 [160]	21.50 [546]

SHAFT LENGTH FORMULA - $L = H - 3.13$
MOUNTING DEPTH (H) - measured from the circuit breaker mounting surface to the outside of the enclosure door.

Catalog Number: 9421-LR1, LR4
Ratings: (TYPE-LL1 MECHANISM) for use with TYPE LAL, LHL, OR Q4L CIRCUIT BREAKERS
UL File/Guide: EG2922
CSA File/Guide: -
Meets Standards: -
Weight: LR1-4.68 lbs/LR4-7.84 lbs
Wire Size: -
Terminal torque: -
Mounting Hwd.: (4)-1/4-20 screws

"THE SQUARE D COMPANY HAS PROPRIETARY RIGHTS TO THE INFORMATION CONTAINED HEREON. THIS INFORMATION REMAINS THE PROPERTY OF SQUARE D COMPANY AND MAY BE USED ONLY IN CONFORMANCE WITH INSTRUCTIONS ISSUED BY SQUARE D COMPANY. USER SHOULD VERIFY DRAWINGS ARE TO THE LATEST/CURRENT REVISION PRIOR TO INCORPORATING IN A DESIGN FILE."

DO NOT SCALE DRAWING
UNLESS OTHERWISE SPECIFIED DIMENSIONS ARE IN INCHES

THIRD ANGLE PROJECTION
TOLERANCES
UNLESS OTHERWISE SPECIFIED
2 PLACE DECIMALS ± .01

LR1 MECH. FOR USE WITH TYPE LAL, LHL, & Q4L CIRCUIT BREAKERS
CLASS 9421 TYPE LR1 & LR4

SQUARE D COMPANY

DWG# 9421 LR_OUTLINE_001
NO.