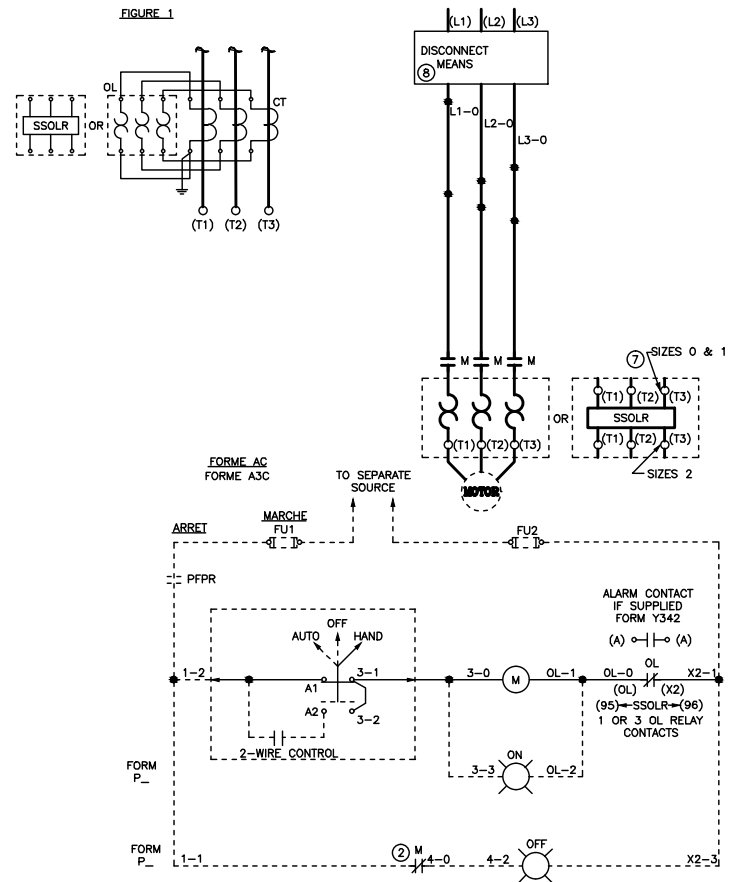


ITEM	CATALOG	DESCRIPTION
1	9422FTCF30	30A FUSIBLE DISCONNECT SWITCH
2	9422TC30	FUSEBASE ASSEMBLY
3	9999TC11	AUXILIARY CONTACT ON DISCONNECT SWITCH
4	9422A3	OPERATING HANDLE FOR DISCONNECT SWITCH
5	9422R1	OPERATING ROD FOR DISCONNECT SWITCH
6	8536SCO3V02S	FULL VOLTAGE MOTOR STARTER NEMA SIZE 1
7	9999SX8	AUXILIARY CONTACT 1 N.O. AND 1 N.C. ON STARTER
8	9999SC8	HAND OFF AUTO SELECTOR SWITCH
9	9999SPL29R	RED LED PILOT LIGHT
10	9999SPL29G	GREEN LED PILOT LIGHT
11	9066RB1	RESET PUSHBUTTON

- NOTES:
- NEMA TYPE 12 ENCLOSURE.
 - ITEMS 1,2,3,4 AND 6 ARE WELDED AS SHOWN, ALL SEAMS & JOINTS ARE CONTINUOUS WELDED FOR NEMA 12 SERVICE. AFTER WELDING THESE PARTS ARE PAINTED PER FINISH SPECIFICATION.
 - FINISH 30795-514 .4PTS
 - AFTER ITEMS 1,2,3,4 AND 6 WERE PAINTED, INSTALL COVER ASSEMBLY ITEM 8 USING HINGE PIN ITEM 5.
 - DIMENSIONS A=6.75/[171] FOR ASSEMBLY -50
A=8.25/[210] FOR ASSEMBLY -51.
 - FIP GASKET MUST BE LOCATED ON ITEM 8, PER BBV5702800 SPECIFICATION.

SEE DRAWING 50014-009-5X FOR GASKET LOCATION.*



DUAL DIMENSIONS: INCHES
MILLIMETERS

COMBO MOTOR STARTER
SIZE 1
8538SCASP1
(8538SCA22V02CP51P52SX22Y74)



DWG# 8538SCASP1
NO.