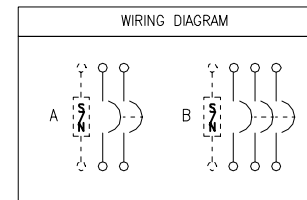


**LA 400 R  
NEMA/EEMAC TYPE 3R**

NOTES:  
 FINISH - GRAY BAKED ENAMEL ELECTRODEPOSITED OVER CLEANED PHOSPHATIZED STEEL.  
 UL LISTED - FILE E-136861, CSA CERTIFIED - FILE #LL89067.  
 SUITABLE FOR USE AS SERVICE EQUIPMENT WHEN NEUTRAL ASSEMBLY IS INSTALLED.  
 NEUTRAL - INSULATED GROUNDABLE.  
 THE SHORT CIRCUIT CURRENT RATING OF THIS ENCLOSED CIRCUIT BREAKER IS EQUAL TO THE INTERRUPTING RATING, AT THE SUPPLY VOLTAGE MARKED ON THE CIRCUIT BREAKER INSTALLED.

| CIRCUIT BREAKER TERMINAL LUG DATA |               |                      |                       |     |          |  |
|-----------------------------------|---------------|----------------------|-----------------------|-----|----------|--|
| CIRCUIT BREAKER CATALOG NO PREFIX | AMPERE RATING | CONDUCTORS PER PHASE | WIRE SIZE (AWG/KCMIL) |     | TYPE     |  |
|                                   |               |                      | MAX                   | MIN |          |  |
| LAL,LHL                           | 125-400A      | 1                    | 600                   | #1  | AL OR CU |  |
|                                   | 125-400A      | 2                    | 250                   | #1  |          |  |
| Q4L                               | 250-400A      | 1                    | 600                   | #1  | AL OR CU |  |
|                                   | 250-400A      | 2                    | 250                   | #1  |          |  |
| KAL,KHL                           | 70-250A       | 1                    | 350                   | #4  |          |  |



| FIELD INSTALLABLE SOLID NEUTRAL ASSEMBLIES AND GROUND KIT |                       |                     |                      |                 |     |          |
|---|-----------------------|---------------------|----------------------|-----------------|-----|----------|
| CATALOG NUMBER  | MAXIMUM AMPERE RATING | NUMBER OF TERMINALS | CONDUCTORS PER PHASE | WIRE SIZE (AWG) |     | TYPE     |
|   |                       |                     |                      | MAX             | MIN |          |
| SN225KA   | 225A                  | 2                   | 1                    | 300             | #4  | AL OR CU |
| 400SN   | 400A                  | 2                   | 1 OR 2               | 600             | #1  | AL OR CU |
|   |                       |                     |                      | 250             | #1  |          |
| PK0GTA2   | -                     | 2                   | 1                    | #2/0            | #10 | CU       |
|   |                       |                     |                      | #2/0            | #6  |          |

| KNOCKOUTS |              |    |          |     |
|-----------|--------------|----|----------|-----|
| SYMBOL    | CONDUIT SIZE |    | DIAMETER |     |
|           | IN           | MM | IN       | MM  |
| A         | .50          | 13 | .88      | 22  |
| B         | .75          | 19 | 1.13     | 29  |
| C         | 1.00         | 25 | 1.38     | 35  |
| D         | 1.25         | 32 | 1.75     | 45  |
| E         | 1.50         | 38 | 2.00     | 51  |
| F         | 2.00         | 51 | 2.50     | 64  |
| G         | 2.50         | 64 | 3.00     | 76  |
| H         | 3.00         | 76 | 3.63     | 92  |
| I         | 3.50         | 89 | 4.13     | 105 |

DUAL DIMENSIONS: INCHES  
MILLIMETERS

| FIELD INSTALLED CIRCUIT BREAKER DATA |            |               |   |     |          |     |            |     |     |                            |         |
|--------------------------------------|------------|---------------|---|-----|----------|-----|------------|-----|-----|----------------------------|---------|
| CIRCUIT BREAKER CATALOG NO PREFIX    | WIRING DIA | AMPERE RATING | UL LISTED INTERRUPTING RATING RMS SYMMETRICAL AMPERES |     |          |     |            |     |     | FEDERAL SPECS W-C-375B/GEN |         |
|                                      |            |               | AC VOLTAGE  |     |          |     | DC VOLTAGE |     |     |                            |         |
|                                      |            |               | 120   | 240 | 480Y/277 | 480 | 600        | 125 | 250 |                            | 500     |
| LAL                                  | A          | 125-400       | 42K   | 42K | 30K      | 30K | 22K        | 10K | 10K | -                          | 21A     |
|                                      | B          | 125-400       | 42K   | 42K | 30K      | 30K | 22K        | 10K | 10K | -                          | 21A     |
| LHL                                  | A          | 125-400       | 65K   | 65K | 35K      | 35K | 25K        | 10K | 10K | -                          | 23A     |
|                                      | B          | 125-400       | 65K   | 65K | 35K      | 35K | 25K        | 10K | 10K | -                          | 23A     |
| LHL-DC                               | B          | -             | -   | -   | -        | -   | -          | -   | -   | 20K                        | -       |
| Q4L                                  | A          | 250-400       | 25K   | 25K | -        | -   | -          | -   | -   | -                          | 14B     |
|                                      | B          | 250-400       | 25K   | 25K | -        | -   | -          | -   | -   | -                          | 14B     |
| KAL                                  | A          | 70-250        | 42K   | 42K | 25K      | 25K | 22K        | 10K | 10K | -                          | 19A,20A |
|                                      | B          | 70-250        | 42K   | 42K | 25K      | 25K | 22K        | 10K | 10K | -                          | 19A,20A |
| KHL                                  | A          | 70-250        | 65K   | 65K | 35K      | 35K | 25K        | 10K | 10K | -                          | 23A     |
|                                      | B          | 70-250        | 65K   | 65K | 35K      | 35K | 25K        | 10K | 10K | -                          | 23A     |
| KHL-DC                               | B          | -             | -   | -   | -        | -   | -          | -   | -   | 20K                        | -       |

CIRCUIT BREAKER ENCLOSURE  
70-400 AMPERE  
NEMA/EEMAC TYPE 3R RAINPROOF ENCLOSURE

**SQUARE D COMPANY**

DWG# 3077  
NO.