

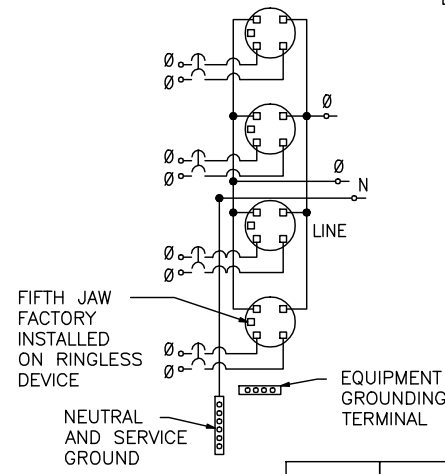
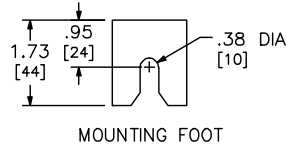
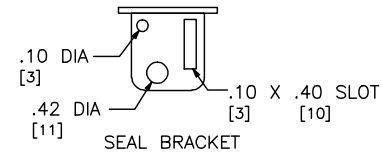
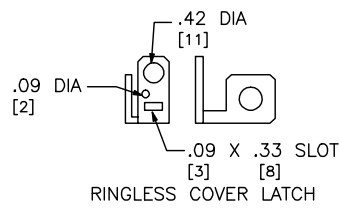
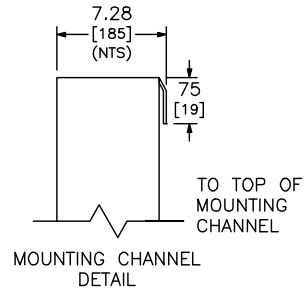
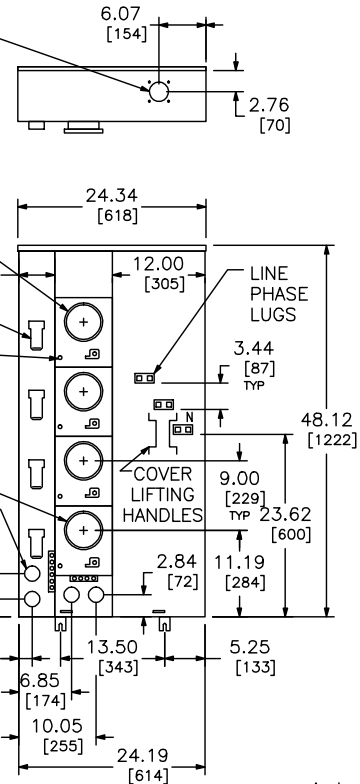
SUPPLIED WITH ACPL CLOSING PLATE (FOR UNDERGROUND SERVICE) ORDER TYPE A-L HUB SEPARATELY (FOR OVERHEAD SERVICE)

TOP POSITION OMITTED ON 3-GANG UNIT

TENANT CIRCUIT BREAKER DOORS (PADLOCKABLE)

COVER KNOCKOUT FOR USE WITH UTILITY BARREL LOCK (RINGLESS DEVICES ONLY)

INDIVIDUAL METER SOCKET COVERS: RING TYPE (INCLUDES SNAP TYPE ALUMINUM SEALING RINGS) OR RINGLESS STYLE (SUPPLIED WITH COVER SEALING LATCHES)



KNOCKOUTS				
SYMBOL	CONDUIT SIZE		HOLE DIAMETER	
	IN	MM	IN	MM
A	.50	13	.88	22
B	.75	19	1.25	32
C	1.00	25	1.38	35
D	1.25	32	1.75	44
E	1.50	38	2.00	51
F	2.00	51	2.50	64
G	2.50	64	3.00	76
H	3.00	76	3.63	92
I	3.50	89	4.13	105
J	4.00	102	4.63	117

INTERRUPTING RATING RMS SYMMETRICAL AMPERES AT 120/240 V AC MAX	SQUARE D CIRCUIT BREAKER CATALOG DESIGNATION	CIRCUIT RATING AMPERES MAX
10,000	QO	125
22,000	QO-VH	125
42,000	QOH	125

ALTERNATE MECHANICAL LUGS	
WIRE SIZE	CATALOG NO
(1) 1/0-600 AWG/KCMIL OR (2) 1/0-250 PER PHASE	MMLK250
(2) 3/0-500 AWG/KCMIL PER PHASE	MMLK500
(2) 2-600 AWG/KCMIL PER PHASE	MMLK600

DUAL DIMENSIONS: INCHES MILLIMETERS

METER SOCKET COVER	NO. OF METER SOCKETS	NO. OF JAWS	FACTORY INSTALLED BYPASS	120/240VAC, 1Ø 3 WIRE OR 208y/240VAC, 1Ø 3 WIRE (5TH JAW REQUIRED)		LOAD LUG WIRE SIZES (AWG-KCMIL)		
				MAIN BUS RATING	CATALOG NUMBER	LINE LUG WIRE SIZES (AWG/KCMIL)		
						PHASE AND NEUTRAL	PHASE	NEUTRAL, SERVICE GROUND & EQUIPMENT GROUNDING
RING-TYPE	3	4	NONE	300	MP33-125	(1) 1/0-600 OR (2) 1/0-250	SEE CIRCUIT BREAKER WIRE SIZE	2/0-14 CU, 2/0-12 AL
RING-TYPE	4	4	NONE	400	MP44-125			
RINGLESS	3	5	NONE	300	MPR33-125	(1) 1/0-600 OR (2) 1/0-250	SEE CIRCUIT BREAKER WIRE SIZE	2/0-14 CU, 2/0-12 AL
RINGLESS	3	5	NONE	300	MPH33-125			
RINGLESS	4	5	NONE	400	MPR44-125	(1) 1/0-600 OR (2) 1/0-250	SEE CIRCUIT BREAKER WIRE SIZE	2/0-14 CU, 2/0-12 AL
RINGLESS	4	5	HORN	400	MPH44-125			

NOTES:
 FINISH - UL COMPONENT RECOGNIZED GRAY BAKED POWDER COAT PAINT OVER CLEANED PHOSPHATIZED STEEL.
 UL LISTED - FILE E-6294. SUITABLE ONLY FOR USE AS SERVICE EQUIPMENT. SUITABLE FOR OH/UG SERVICE.
 RING-TYPE DEVICE SUPPLIED WITH 4-JAW METER SOCKET, 5TH JAW KIT AVAILABLE.
 SURFACE MOUNT, CONVERTABLE TO SEMI-FLUSH WITH FIELD INSTALLED KIT.
 MECHANICAL LUGS FACTORY INSTALLED, LUG LANDING PADS AVAILABLE. ORDER CATALOG NUMBER MMLK2.
 ■ LOAD PHASE LUGS ARE SUPPLIED AS A PART OF THE CIRCUIT BREAKER (TENANT SERVICE DISCONNECT).
 ♦ THE METER CENTER SHORT CIRCUIT CURRENT RATING IS EQUAL TO THE LOWEST SHORT CIRCUIT CURRENT RATING GIVEN IN THE TABLE FOR ANY CIRCUIT BREAKER INSTALLED IN THE METER CENTER.

MP METER-PAK METERING EQUIPMENT
 NEMA TYPE 3R ENCLOSURE
 125A MAXIMUM TENANT CIRCUIT BREAKERS



DWG# 2249
 NO.