

Section 29

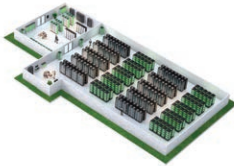
EcoStruxure™



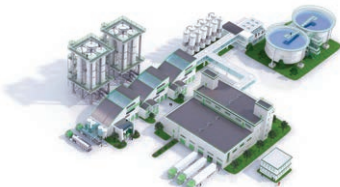
EcoStruxure™ Power



EcoStruxure™ Building



EcoStruxure™ IT



EcoStruxure™ Plant and Machine



EcoStruxure™ Grid

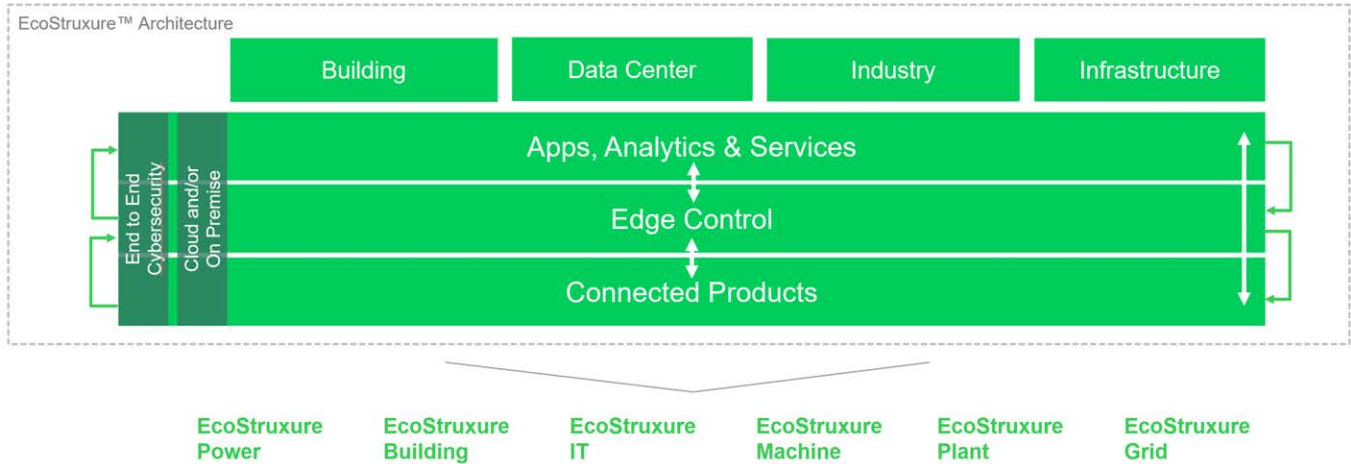
Overview of EcoStruxure™	29-2
EcoStruxure™ Power	29-3
EcoStruxure™ Building	29-4
EcoStruxure™ IT	29-5
EcoStruxure™ Plant and Machine	29-6
EcoStruxure™ Grid	29-7
EcoStruxure™ Energy and Sustainability Services	29-8
All Schneider Electric Services	29-8

EcoStruxure™: IoT-enabled Architecture and Platform

EcoStruxure™ is Schneider Electric's IoT-enabled, plug-and-play, open, interoperable architecture and platform, in Homes, Buildings, Data Centers, Infrastructure and Industries.

EcoStruxure delivers one architecture, serving four end markets (Building, Data Center, Industry, Infrastructure), with six domains of expertise: [1]

- EcoStruxure™ Power
- EcoStruxure™ Building
- EcoStruxure™ IT
- EcoStruxure™ Machine
- EcoStruxure™ Plant
- EcoStruxure™ Grid



Apps, Analytics, and Services [1]

Interoperability is imperative to supporting the diverse hardware and systems in building, data center, industry, and grid end markets. EcoStruxure enables a breadth of agnostic applications, analytics & services for seamless enterprise integration.

Edge Control [1]

Mission-critical scenarios can be unpredictable, so control of devices at the edge of the IoT network is a must. This essential capability provides real-time solutions that enable local control at the edge, protecting safety and uptime.

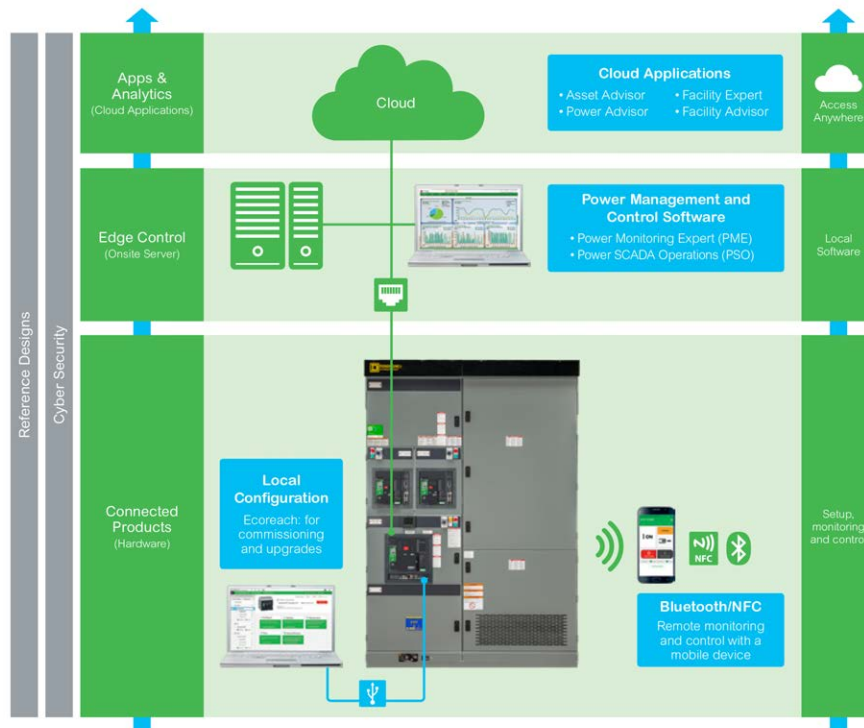
Connected Products [1]

The Internet of Things starts with the best things. Our IoT-enabled best-in-class connected products include breakers, drives, UPSs, relays, sensors, and more. Devices with embedded intelligence drive better decision-making throughout operations.

[1] EcoStruxure™ is continually evolving and expanding. The printed Digest may not reflect all available connected products, apps, analytics, and services. Refer to EcoStruxure™ on www.se.com/us for the latest information.

EcoStruxure™ Power

Schneider Electric's EcoStruxure Power offers advanced power system communication at every level of your operation. Connected products such as Masterpact MTZ circuit breakers are a key component of EcoStruxure Power, providing real-time operations data, smart analytics, and improved safety and security to your facility and processes. Welcome to the future of power distribution. [1]



Visit [EcoStruxure™ Power](http://www.schneider-electric.us) on www.schneider-electric.us for the latest information.

Apps, Analytics & Services [1]

Get actionable predictive maintenance information that protects your customers, safeguard your reputation and minimizing financial impact.

- EcoStruxure™ Asset Advisor
- EcoStruxure™ Power Advisor
- EcoStruxure™ Facility Advisor
- EcoStruxure™ Resource Advisor

Edge Control [1]

Track equipment and maintenance activity to reduce downtime, energy use, and maintenance costs while improving site planning and revealing additional capacity.

- EcoStruxure™ Facility Expert
- EcoStruxure™ Power Monitoring Expert
- EcoStruxure™ Power SCADA Operation
- EcoStruxure™ Substation Operation

Connected Products [1]

Monitor power distribution, anticipate needs, pinpoint concerns, and control assets remotely.

- Masterpact™ MTZ Circuit Breakers and Connected Products
- PowerLogic™ Power and Energy Meters
- Enerlin'X Com'X Energy Servers and Data Loggers
- Smart Panels and Smart Systems
- Galaxy Uninterruptible Power Supply (UPS)
- Premset MV Switchgear

[1] EcoStruxure™ is continually evolving and expanding. The Digest may not reflect all available connected products, apps, analytics, and services. Refer to [EcoStruxure™](http://www.schneider-electric.us) on www.schneider-electric.us for the latest information.

EcoStruxure™ Building

From design, through integration to commissioning, EcoStruxure™ Building brings best-in-class engineering efficiency to your building. Combined with our asset and energy performance services, we enable lifetime efficiency of your building ensuring productivity and comfort for occupants. [1]



Visit [EcoStruxure™ Building](http://www.schneider-electric.us) on www.schneider-electric.us for the latest information

Apps, Analytics, and Services [1]

Gain actionable insights via apps, analytics and services based on best-in-class expertise, processes and predictive technology.

- [EcoStruxure™ Resource Advisor](#)
- [EcoStruxure™ Building Advisor](#)
- [EcoStruxure™ Workplace Advisor](#)
- [Connected Services / Field Services](#)

Edge Control [1]

Simplify integration between buildings and systems with EcoStruxure Building Management.

- [Building Management](#)

Connected Products [1]

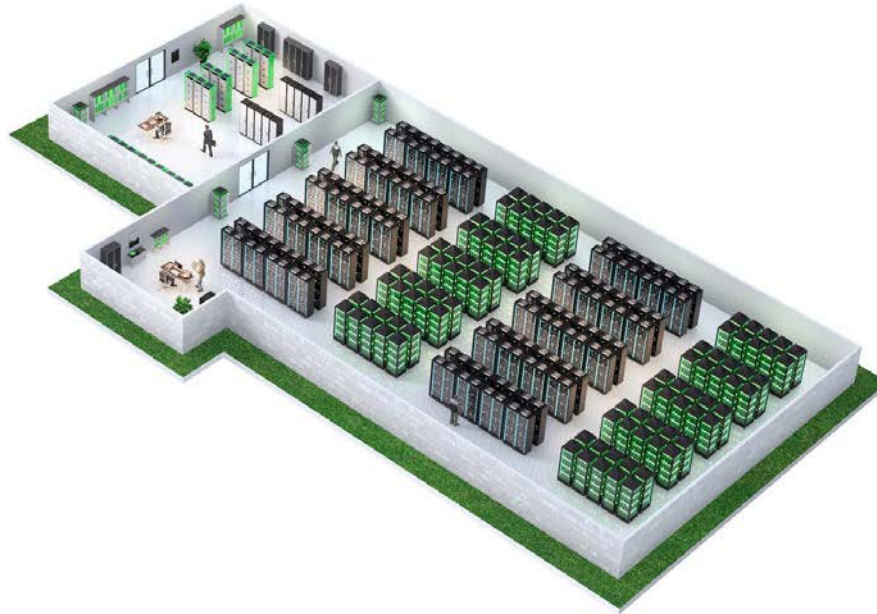
Build a solid foundation with connected devices ranging from valves actuators and controllers, to circuit breakers, sensors and meters.

- [Masterpact™ MTZ](#)
- [PowerLogic™ Power and Energy Meters](#)
- [Altivar™ Drives](#)
- [PowerPact™ Circuit Breakers](#)
- [Smart Panels and Smart Systems](#)
- [Galaxy UPS](#)
- [Smart Devices](#)

[1] EcoStruxure™ is continually evolving and expanding. The Digest may not reflect all available connected products, apps, analytics, and services. Refer to [EcoStruxure™](#) on www.schneider-electric.us for the latest information.

EcoStruxure™ IT

In a connected world, it's now more important than ever to protect critical information and data. Ensure that your data center's physical infrastructure can adapt quickly to support both future demand driven by IoT and growth (in the cloud and at the edge) without ever compromising availability or operational efficiency. [1]



Visit [EcoStruxure™ IT](http://www.schneider-electric.us) on www.schneider-electric.us for the latest information

Apps, Analytics & Services [1]

Increasing resiliency and visibility through live sensor data, predictive analytics and smart alarming.

- [EcoStruxure™ IT Advisor](#)
- [EcoStruxure™ Asset Advisor](#)

Edge Control [1]

For real-time monitoring, incident management, analysis and asset utilization.

- [EcoStruxure™ IT Expert](#)

Connected Products [1]

Connecting the domains of IT, mechanical and power room for resiliency and efficiency.

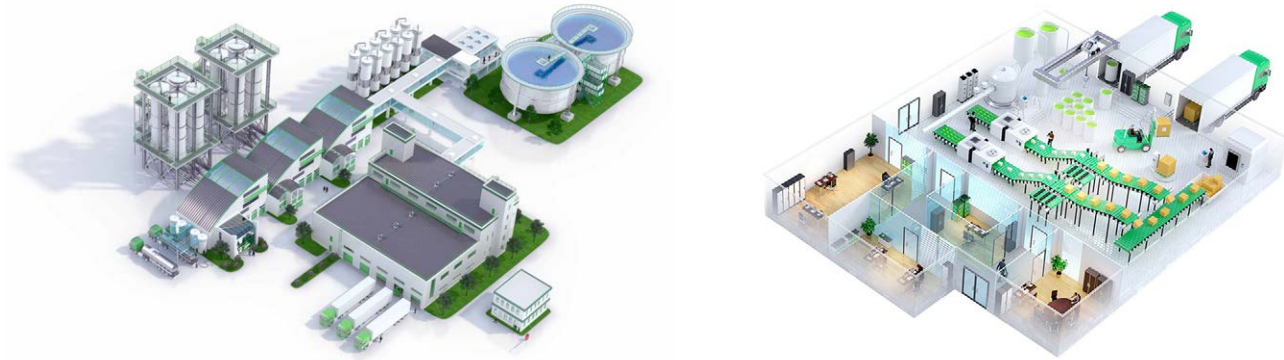
- Visit [EcoStruxure™ IT](http://www.schneider-electric.us) on www.schneider-electric.us for the latest connected products.

[1] EcoStruxure™ is continually evolving and expanding. The Digest may not reflect all available connected products, apps, analytics, and services. Refer to [EcoStruxure™](http://www.schneider-electric.us) on www.schneider-electric.us for the latest information.

EcoStruxure™ Plant and Machine

Schneider Electric is leading the digital transformation of industrial automation markets. Delivered through our EcoStruxure architecture, our IIoT technologies, including integrated software, are ready for smart manufacturing and can deliver new business opportunities for plants and machine builders — increasing profitability and productivity.

[1]



Apps, Analytics & Software [1]

Our full portfolio of software, apps, and analytics offer tools and information in a format that is easily actionable to turn plant personnel into business decision makers, who can contribute easily to optimizing your system.

- [Asset Performance Monitoring and Control Software](#)
- [Wonderware® System Platform](#)
- [EcoStruxure™ Machine Advisor](#)
- [EcoStruxure™ Secure Connect Advisor](#)
- [EcoStruxure™ Augmented Operator Advisor](#)
- [EcoStruxure™ Mobile Operator Advisor](#)
- [Machine automation software](#)
- [EcoStruxure™ Profit Advisor](#)
- [EcoStruxure™ Control Advisor](#)
- [EcoStruxure™ Maintenance Advisor](#)
- [EcoStruxure™ Asset Advisor](#)
- [EcoStruxure™ Resource Advisor](#)

Edge Control [1]

Our connected control platforms provide better insight into operations, reduce time to market, reduce process energy consumption and improve productivity.

- [Magelis IIoT Box PCs and Industrial PCs](#)
- [Hybrid Process - Modicon M580 ePAC controller](#)
- [Continuous Process - Foxboro](#)
- [Safety Instrumented System - Triconex](#)
- [Machine automation](#)
- [Building Management](#)

Connected Products [1]

Our connected products bring intelligence to your system, enabling your assets to provide advanced process data for smarter operations.

- Visit [EcoStruxure™ Plant & Machine](#) on www.schneider-electric.us for the latest connected products.
- [Magelis HMI](#)
- [Sensors & RFID](#)
- [Process Instrumentation](#)
- [TeSys™ Control and Protection](#)
- [Altivar™ Machine variable speed drives](#)
- [Altivar™ Process variable speed drives](#)
- [Harmony Push Buttons, Controllers, and Signaling Products](#)
- [Preventa™ Process and Machine Safety](#)
- [Lexium Servo Drives & Motors](#)

[1] EcoStruxure™ is continually evolving and expanding. The Digest may not reflect all available connected products, apps, analytics, and services. Refer to [EcoStruxure™](#) on www.schneider-electric.us for the latest information.

EcoStruxure™ Grid

From seamless local production and integration at the grid edge, to bridging demand and supply, EcoStruxure™ Grid increases your grid's efficiency for sustainable networks. [1]



Apps, Analytics, and Services [1]

Smart grid analytics for efficient operations, predictive maintenance and investment plans. A complete services portfolio - from field instruments to control room - to help optimize assets, people, equipment and plant, at every stage of your asset life cycle.

- EcoStruxure™ ADMS
- EcoStruxure™ ArcFM
- EcoStruxure™ Asset Advisor
- EcoStruxure™ Microgrid Advisor
- EcoStruxure™ Smart Metering Advisor
- EcoStruxure™ Resource Advisor
- Field Services

Edge Control [1]

Secure, reliable & efficient grid, substation & meter management.

- EcoStruxure™ Substation Operation
- EcoStruxure™ Microgrid Operation
- EcoStruxure™ Advanced Metering Operation

Connected Products [1]

Remote control & monitoring insights on mobile tools for safer maintenance and operations.

- Visit EcoStruxure™ Grid on www.schneider-electric.us for the latest connected products.
- Smart Ring Main Unit
- Easergy T300 Remote Terminal Unit
- Easergy Protection relays
- Minera SGrid Transformer

[1] EcoStruxure™ is continually evolving and expanding. The Digest may not reflect all available connected products, apps, analytics, and services. Refer to EcoStruxure™ on www.schneider-electric.us for the latest information.

EcoStruxure™ Energy and Sustainability Services



Discover our [EcoStruxure™ Energy and Sustainability Services](#) (formerly known as Energy and Sustainability Services), including big data management, to turn this vision into your business reality.

Active Energy Management: an integrated approach for sustainable growth

Organizations are starting to integrate how they use and buy energy with sustainability initiatives to see additional benefits such as increased efficiency, financial savings and more sustainable operations across their global footprint. We call this market convergence Active Energy Management. Find out how you can look at energy and sustainability holistically and start your journey to Active Energy Management.

All Schneider Electric Services



Schneider Electric is dedicated to maintaining and improving your system's reliability, productivity, comfort and efficiency, and providing you with power, automation and control, and building life cycle service solutions.

Our customer support services are designed so that you can select the level of expertise and resources you need to keep your processes and infrastructure at peak operational performance, anywhere in the United States, any time you need us. ^[1]

Visit [Services](#) on www.schneider-electric.us for more information:



Field Services

Schneider Electric Services safely and consistently delivers expert care across your systems, enabling you to operate at peak performance. From power restoration services to modernization and upgrade solutions, we have the expertise to work on any manufacturer's equipment.



Consulting Services

Our consultants serve as trusted advisers who will provide recommendations to optimize your energy profile to minimize costs, solve complex power system issues to ensure electrical reliability, and provide a strategy to meet future energy requirements.



Partner Managed Services

Featuring our software suite of managed services which help to improve operations, manage assets, and decrease energy costs in your buildings.



Integrated Facility Management

Reduce OpEx, avoid unplanned costs, and increase uptime throughout your data center's life cycle.



EcoStruxure™ Energy and Sustainability Services

We help our clients design a strategy, deliver efficiency in their facilities and sustain results over time through long-term partnerships. As an unbiased, independent consultant, we work with clients in more than 100 countries; from regional companies to the world's largest corporations.



Natural Disasters Support

When disaster strikes, Schneider Electric is committed to helping customers restore power safely and efficiently, 24 hours a day. If you need assistance, call us at 1-888-272-6841 and enter PIN 987833#

[1] EcoStruxure™ is continually evolving and expanding. The Digest may not reflect all available connected products, apps, analytics, and services. Refer to [EcoStruxure™](#) on www.schneider-electric.us for the latest information.